

中国科技论文统计源期刊(中国科技核心期刊)

ISSN 1006-1703

CN 11-3294/R

# 标记免疫分析与临床

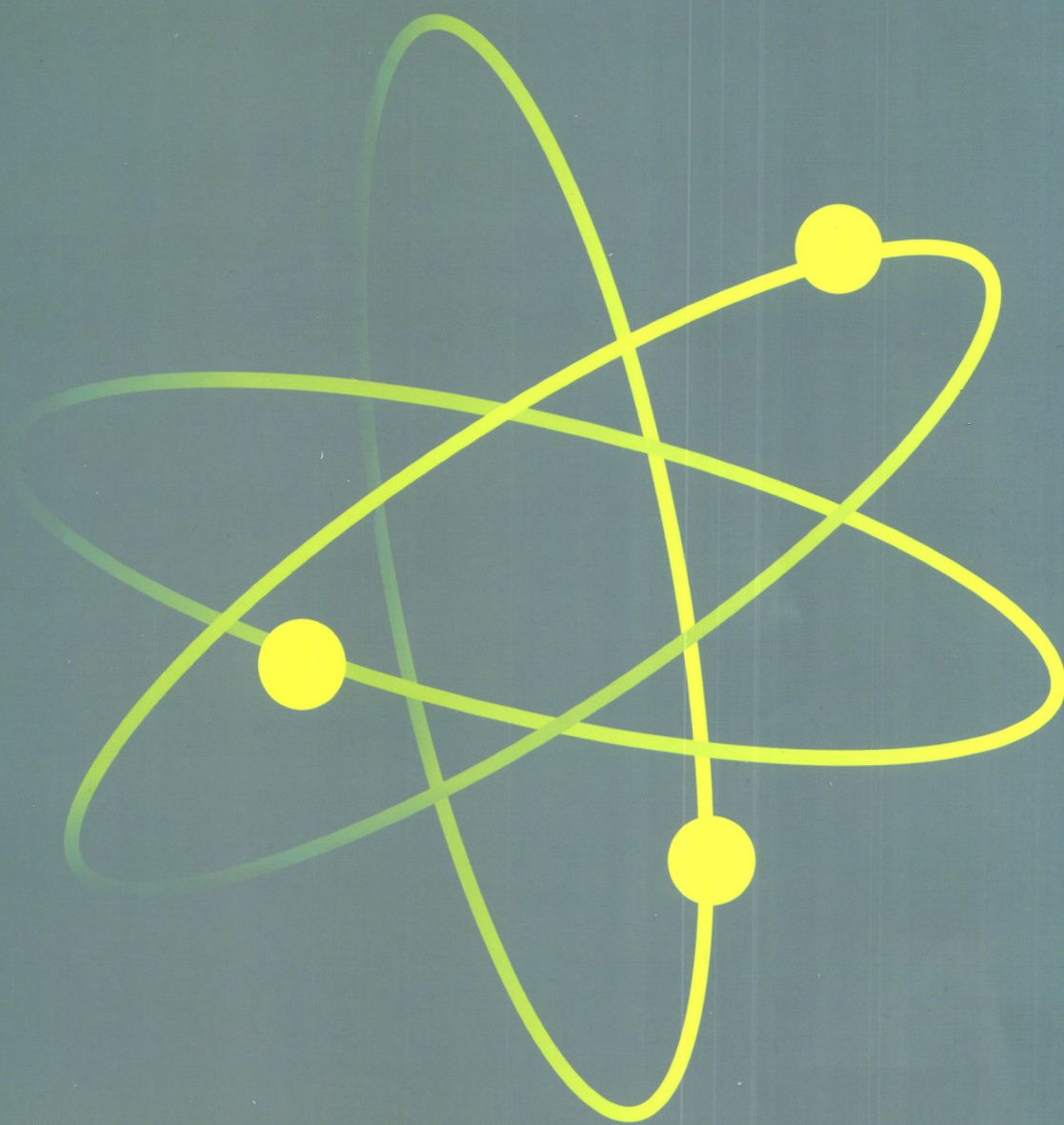
BIAOJI MIANYI FENXI YU LINCHUANG

2017年第24卷第12期 Vol. 24 No. 12 2017

LABELED IMMUNOASSAYS AND CLINICAL MEDICINE



QK1802925



欢迎关注二维码  
关注《标记免疫分析与临床》微信服务平台

ISSN 1006-1703



9 771006 170172

12>

万方数据

中国同辐股份有限公司

China Isotope & Radiation Corporation

# 标记免疫分析与临床

## Labeled Immunoassays and Clinical Medicine

月刊

1994年2月创刊

第24卷

第12期(总134期)卷终

2017年12月25日出版

**主管**

中国核工业集团公司

**主办**

中国同辐股份有限公司

**编辑**

标记免疫分析与临床编辑委员会

**主编** 田亚平**社长** 王丁泉**出版**

中核(北京)期刊出版有限公司

**印刷**

廊坊市蓝海德彩印有限公司

**发行**

公开发行

中国邮政集团公司北京市报刊发行局

**订购**

全国各地邮政局

邮发代号:2-307

**邮购**

中核(北京)期刊出版有限公司

**定价**

每期25元

全年300元

**地址**

北京市西城区三里河二区甲1号305室

邮编100045

**电话**

(010)68515701

(010)68517801

**网址**

www.chinabjmy.com

**E-mail**

bjmy@china-isotope.com

中国标准连续出版物号

ISSN 1006-1703

CN 11-3294/R

**目次****论著****临床研究**

脑血管疾病患者血清甲状腺激素水平检测的临床意义

..... 马瑞敏,刘竞争,郑光辉,等(1321)

妊娠35~37周孕妇携带的B群无乳链球菌血清分型

..... 刘晶,李来收,吉彤珍,等(1324)

中国8个长寿地区老年人肾功能指标检测结果分析

..... 李月玲,白雪梅,李爱红,等(1328)

胃蛋白酶原在萎缩性胃炎筛查中的临床应用价值评估

..... 李志艳,王驰,冯珍如,等(1331)

血清同型半胱氨酸在乳腺癌靶向治疗中的临床意义

..... 周宁,王虎明,张莹,等(1336)

非糖尿病尿路感染患者在治疗中监测血糖的价值分析

..... 王珏,蒋理,衣鲁江(1340)

支气管哮喘患者血清中VEGF、EGF等相关生长因子表达

及与临床表型、肺功能以及病情程度相关性研究

..... 朱婷,王瑾,陈海华,等(1345)

氨茶碱联合胸腺肽对老年COPD患者IL-6、SAA及

hs-CRP的影响

..... 张园,郝璐(1351)

海府地区慢性HBV感染者病毒学特征与P16mRNA

改变的研究

..... 梁宁,郑青,张淑芳,等(1355)

血清补体C1q与狼疮肾炎及糖尿病肾病的相关性分析

..... 郭宏林,黄山,洪燕英(1360)

正常甲状腺功能病态综合征FT<sub>3</sub>、FT<sub>4</sub>和TSH与老年性疾病

相关性研究

..... 李美(1362)

血清脑钠肽N末端前体蛋白与CA125检查在冠心病

心力衰竭中的临床价值

..... 白威峰,张珍,张惠,等(1366)

C-反应蛋白、降钙素原以及D-二聚体在AECOPD中

联合监测的意义

..... 陈宝春(1369)

直肠癌不同治疗方案干预效果比较及对相关因子水平

的影响分析

..... 李长春(1372)

- 幽门螺杆菌感染与轻度颈动脉狭窄患者 OGTT 水平的关联分析  
 ..... 李 晔,丁丽敏(1376)
- 降钙素原在判断老年医院获得性肺炎致病菌耐药性的应用价值  
 ..... 蔡春季,唐静怡,谭清武,等(1380)
- ELISA 和 TPPA 检测无偿献血者中梅毒的结果与分析  
 ..... 吴卫国,田 丰,徐郁萍,等(1383)
- 初诊 2 型糖尿病患者甲状腺激素水平与糖代谢水平的关系研究  
 ..... 童利伟,侯 雨,罗富琼,等(1386)
- 新生儿败血症中降钙素原、内毒素、IL-6 和中性粒细胞百分比的联合检测意义  
 ..... 李远西,雷加萍(1390)
- 新生儿感染诊断中降钙素原及超敏 C-反应蛋白检测的临床意义  
 ..... 杨爱春(1393)
- 不同免疫疗法对强直性脊柱炎患者疗效及骨代谢指标的影响  
 ..... 黄 勤,毛慧慧(1396)
- 血清 BNP、D-二聚体、PCT 和 IL-10 联合检测对心力衰竭并发肺部感染的诊断作用  
 ..... 夏世念,赵 金,谌 杰(1399)
- 甲状腺功能减退与妊娠期血栓前状态的相关分析  
 ..... 梁善影,何焕群,赵正云(1403)
- 流式细胞术检测中性粒细胞 CD64 指数在鉴别早期感染性疾病中的临床价值分析  
 ..... 张剑波,曹 玫,汪智英,等(1406)
- 内科胸腔镜联合肿瘤标志物在不明性质胸腔积液中的诊断价值  
 ..... 邱鸣磊,黄永刚,任佳荣(1410)
- 疏通对慢性阻塞性肺疾病合并肺动脉高压患者凝血状态及血清 NO、NOS 水平的影响  
 ..... 马方兰(1414)

## 方法研究

- 不同尿沉渣检测方法在检测尿红细胞形态及参数中的价值分析  
 ..... 李祥坤(1419)

## 实验室质量管理

- 危急值的分科管理在临床中的应用  
 ..... 王 丹,孙树荣,高华英(1423)
- 血标本类型及室温放置时间对 B 型钠尿酸测定结果的影响  
 ..... 徐 旭,刘 耘,梁国威,等(1427)
- 生物学变异的质量规范在全自动干式生化分析仪中的应用  
 ..... 史光华,张 庆,刘连义,等(1432)
- 利用  $6\sigma$  质量标准和总误差评估 Sysmex CS-5100 血凝仪的性能  
 ..... 刘连义,史光华,刘艳丽,等(1437)

## 综 述

- 小而密低密度脂蛋白胆固醇临床检测应用的研究进展  
 ..... 闻 华,张润玲(1440)

英文摘要目次 ..... ( III )



# Labeled Immunoassays and Clinical Medicine

Monthly Established in February 1994 Volume 24, Number 12 (Cumulated No. 134)

Dec. 25, 2017

## Responsible Institution

China National Nuclear Corporation

## Sponsor

China Isotope & Radiation Corporation

## Editing

Editorial Board of Labeled Immunoassays  
and Clinical Medicine

## Editor-in-Chief

TIAN Ya-ping (田亚平)

## President

WANG Ding-quan (王丁泉)

## Publishing

CNNC (Beijing) Periodical Publishing Co.  
Ltd.

## Printing

Langfang City Lanhaide Multicolor Printing  
Co. Ltd.

## Distribution

Beijing Publishing Bureau of China Post  
Group Corporation

## Mail-Order

CNNC (Beijing) Periodical Publishing Co.  
Ltd.

## Address

Room 305, 1A 2nd Block, Sanlihe, West  
District, Beijing 100045, China

Tel(010) 68515701 (010)68517801

## CNNS

ISSN 1006 - 1703  
CN 11 - 3294/R

## CONTENTS IN BRIEF

### Original Article

#### Clinical Investigation

##### Clinical Significance of Determinations of Serum Thyroid Hormone in Cerebrovascular Disease

MA Rui-min, LIU Jing-zheng, ZHENG Guang-hui, et al. .... (1321)

##### Serotypes on Perinatal Group B Streptococcus Carriers in Late Pregnancy

LIU Jing, LI Lai-shou, JI Tong-zhen, et al. .... (1324)

##### Analysis of Renal Function in Population Older than 60 Years in 8 Longevity Areas in China

LI Yue-ling, BAI Xue-mei, LI Ai-hong, et al. .... (1328)

##### Evaluation of Serum Pepsinogen for Atrophic Gastritis Screening

LI Zhi-yan, WANG Chi, FENG Zhen-ru, et al. .... (1331)

##### The Clinical Significance of Homocysteine in Target Therapy of Breast Cancer

ZHOU Ning, WANG Hu-ming, ZHANG Xuan, et al. .... (1336)

##### Value of Blood Glucose Monitoring in Non-diabetic Patients with Urinary Tract Infection

WANG Jue, JIANG Li, YI Lu-jiang ..... (1340)

##### The Expression of VEGF, EGF and Other Related Growth Factors in the Serum of Patients with Bronchial Asthma and Its Association with Clinical Phenotype, Lung Function and Degree of Disease

ZHU Ting, WANG Jin, CHEN Hai-hua, et al. .... (1345)

##### Effect of Aminophylline Combined with Thymosin on IL-6, SAA and hs-CRP in Elderly Patients with COPD

ZHANG Yuan, HAO Lu ..... (1351)

##### Study on Virological Characteristics and Changes of P16mRNA in Patients with Chronic HBV Infection in Hainan Area

LIANG Ning, ZHENG Qing, ZHANG Shu-fang, et al. .... (1355)

##### Correlation Analysis Between Serum Complement C1q, Lupus Nephritis and Diabetic Nephropathy

GUO Hong-lin, HUANG Shan, HONG Yan-ying ..... (1360)

##### Analysis of Serum FT<sub>3</sub>, FT<sub>4</sub> and TSH in Elderly Patients with Euthyroid Sick Syndrome

LI Mei ..... (1362)

##### Clinical Values of Serum NT-pro BNP and CA125 Detection in the Patients with Heart Failure Due to Coronary Heart Disease

BAI Wei-feng, ZHANG Zhen, ZHANG Hui, et al. .... (1366)

##### A Study of Combined Detection of C-reactive Protein, Procalcitonin and D-dimer Level Associated with AECOPD

CHEN Bao-chun ..... (1369)

##### A Study of Changes of Relative Serum Factors in Different Treatment Regimens of Rectal Cancer Before and After Intervention

LI Chang-chun ..... (1372)

##### Association Analysis of OGTT Levels in Patients with Helicobacter Pylori Infection and Mild Carotid Artery Stenosis

LI Ye, DING Li-min ..... (1376)

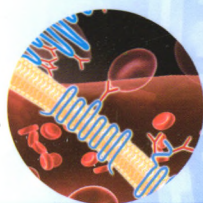
<b>Application Value of Procalcitonin in the Evaluation of Drug Resistance of Pathogenic Bacteria in Elderly Hospital Acquired Pneumonia</b>	
CAI Chun-ji, TANG Jing-yi, TAN Qing-wu, et al. ....	(1380)
<b>Detection of Syphilis in Persons with Unpaid Blood Donation by ELISA and TPPA</b>	
WU Wei-guo, TIAN Feng, XU Yu-ping, et al. ....	(1383)
<b>A Study on the Relationship Between Levels of Thyroid Hormones and Glucose Metabolism in Patients with Newly Diagnosed Type 2 Diabetes Mellitus</b>	
TONG Li-wei, HOU Yu, LUO Fu-qiong, et al. ....	(1386)
<b>Expression and Significance of Procalcitonin, Endotoxin, Interleukin-6 and Neutrophil Percentage in Septicemia</b>	
LI Yuan-xi, LEI Jia-ping ....	(1390)
<b>Clinical Significance of Detection of Procalcitonin and High Sensitivity C-Reactive Protein in Neonatal Infection</b>	
YANG Ai-chun ....	(1393)
<b>Effect of Different Immunotherapy on Serum ESP, CRP and PLT in Patients with Ankylosing Spondylitis</b>	
HUANG Qin, MAO Hui-hui ....	(1396)
<b>Diagnostic Effects of Serum BNP, D-dimer, PCT and IL-10 on Heart Failure Complicated with Pulmonary Infection</b>	
XIA Shi-nian, ZHAO Jin, CHEN Jie ....	(1399)
<b>Correlation Analysis of Hypothyroidism and Pregnancy Prethrombotic State</b>	
LIANG Shan-ying, HE Huan-qun, ZHAO Zheng-yun ....	(1403)
<b>Clinical Value Analysis of Flow Cytometry in Detecting Neutrophil CD64 Index in Identification of Early Infectious Diseases</b>	
ZHANG Jian-bo, CAO Mei, WANG Zhi-ying, et al. ....	(1406)
<b>The Diagnostic Value of Medical Thoracoscopy Combined with Tumor Marker in the Diagnosis of Pleural Effusion of Unknown Nature</b>	
QIU Ming-lei, HUANG Yong-gang, REN Jia-rong ....	(1410)
<b>Effect of Shuxuetong on Blood Coagulation and Levels of Serum NO and NOS in Patients with Chronic Obstructive Pulmonary Disease Complicated with Pulmonary Arterial Hypertension</b>	
MA Fang-lan ....	(1414)
<b>Assay Development</b>	
<b>Analysis of the Value of Different Urinary Sediment Detection Methods for Red Cell Morphology and Parameters</b>	
LI Xiang-kun ....	(1419)
<b>Laboratory Quality Management</b>	
<b>Hierarchical Management of Critical Values in Clinical Application</b>	
WANG Dan, SUN Shu-rong, GAO Hua-ying ....	(1423)
<b>Effect of Sample Types and Storage Time on Detection of Serum B-type Natriuretic Peptide</b>	
XU Xu, LIU Yun, LIANG Guo-wei, et al. ....	(1427)
<b>Quality Specifications of Biological Variation Applied in Biochemical Analyzer</b>	
SHI Guang-hua, ZHANG Qing, LIU Lian-yi, et al. ....	(1432)
<b>Performance Evaluation of Coagulation Analyzer Sysmex CS-5100 with 6<math>\sigma</math> Quality Standard and Total Error Management</b>	
LIU Lian-yi, SHI Guang-hua, LIU Yan-li, et al. ....	(1437)
<b>Review</b>	
<b>Determination of Small and Low Density Lipoprotein Cholesterol and Its Clinical Application</b>	
WEN Hua, ZHANG Run-ling ....	(1440)

社 长 王丁泉  
副 社 长 李 凌  
编 辑 张增武 李 凌 潘子昂  
本期责任编辑 李 凌  
本期英文审校 宋文宇 刘丽君

本刊由北京中同蓝博临床检验所、北京北方生物技术研究所协办

期刊基本参数: CN 11 - 3294/R \* 1994 \* M \* A4 \* 120 \* zh \* P \* ¥25.00 \* 1100 \* 32 \* 2017-12

# 小而密低密度脂蛋白胆固醇测定试剂盒 (过氧化物酶法)



适用于生化分析仪



液体试剂

过氧化物酶法

禁忌内容或注意事项详见说明书

追求卓越 成就未来

金斯尔·九强生物旗下体外诊断试剂品牌

北京九强生物技术股份有限公司 Beijing Strong Biotechnologies, Inc.

地址：北京市海淀区花园东路15号旷怡大厦5层 电话：+86-10-82012486

网址：www.bsbe.com.cn 免费电话：800-810-0197

医疗器械注册证编号：京械注准20162400155

广告批准文号：京医械广审(文)第2017070513号