

中国科技论文统计源期刊 (中国科技核心期刊)

QK1914402

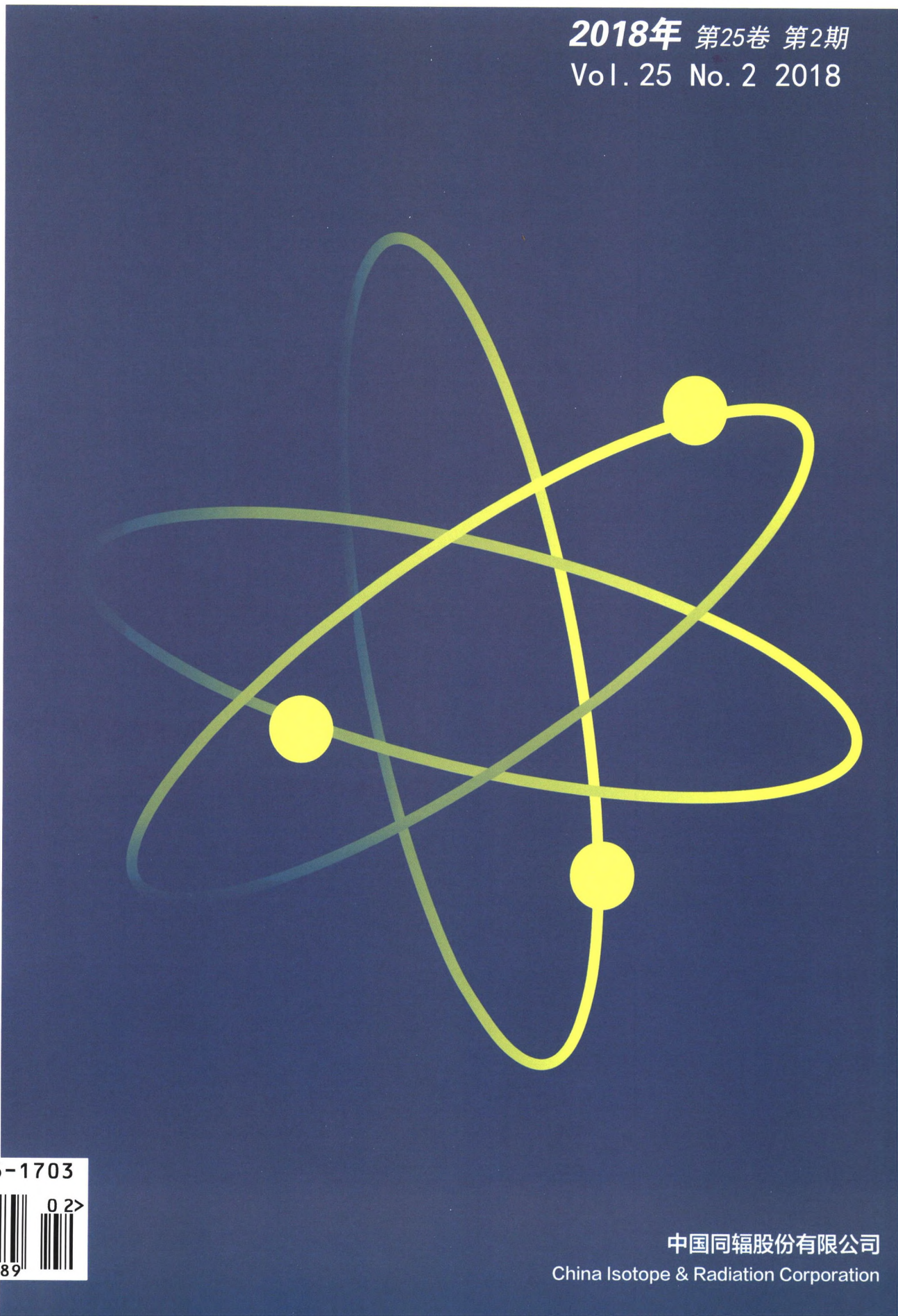
标记免疫分析与临床

BIAOJI MIANYI FENXI YU LINCHUANG

LABELED IMMUNOASSAYS AND CLINICAL MEDICINE

2018年 第25卷 第2期

Vol. 25 No. 2 2018



ISSN 1006-1703



9 771006 170189

万方数据

中国同辐股份有限公司

China Isotope & Radiation Corporation

标记免疫分析与临床

Labeled Immunoassays and Clinical Medicine

月刊

1994年2月创刊

第25卷

第2期(总136期)

2018年2月25日出版

主管

中国核工业集团有限公司

主办

中国同辐股份有限公司

编辑

标记免疫分析与临床编辑委员会

主编 田亚平

社长 王丁泉

出版

中核(北京)期刊出版有限公司

印刷

北京科信印刷有限公司

发行

公开发行人

中国邮政集团公司北京市报刊发行局

订购

全国各地邮政局

邮发代号:2-307

邮购

中核(北京)期刊出版有限公司

定价

每期25元

全年300元

地址

北京市西城区三里河二区甲1号305室

邮编100045

电话

(010)68515701

(010)68517801

网址

www.chinabjmy.com

E-mail

bjmy@china-isotope.com

中国标准连续出版物号

ISSN 1006-1703

CN 11-3294/R

目次

论著

临床研究

肥胖相关基因 FTO-rs17817449 和 SEC16B-rs574367 多态性与代谢综合征相关性研究

..... 徐旭,肖君,梁国威(149)

STAT3 在食管胃交界处腺癌中的表达及意义

..... 李剑,韩广森,冯稳,等(155)

血清 HDL2b 水平与动脉粥样硬化和急性冠脉综合征的关系

..... 杨彩娥,张春燕,田亚平(158)

分析吉非替尼敏感性与耐药性非小细胞肺癌患者临床特征和血清中相关标志物的水平变化

..... 张火兵,童能胜,苍宏宇,等(162)

糖尿病患者血液中 tau 磷酸化和总 tau 蛋白水平及 PP2A

活性与糖尿病后认知功能障碍研究

..... 李骏,朱常勤,梁金玲,等(167)

孟鲁司特钠用药对过敏性紫癜患儿体内血清 IL-6、IL-8 及

sICAM-1 表达的影响

..... 王瑶,漆光畅(171)

肾细胞癌 Ki67、p53、FHIT 蛋白表达与临床病理指标及

预后的关系

..... 陈菊丽,李靖(174)

203 例支气管哮喘患儿吸入变应原检测及其临床意义

..... 王昌铭,姚永杰,李华信(179)

尿酸不高的急性痛风患者血清中 IL-6、IL-1 β 和炎症

指标的表达式水平及临床意义分析

..... 钱凯,张筠雪,李春梅,等(183)

血清高尔基体蛋白 73 水平与肝纤维化相关性分析

..... 应筱雯,俞莹,刘雯,等(186)

前列腺肿瘤患者病理分期血清 PSA、T 和 D-D 水平预测

价值的临床研究

..... 李美,蒋晓鸣(192)

酶法检测呼和浩特地区蒙汉人群血清 sdLDL-C 水平的调查

..... 王美英,韩艳秋(195)

激素紊乱对自发性蛛网膜下腔出血患者的临床诊断与

预后的影响研究

..... 刘岚,郭俊(199)

糖尿病合并骨质疏松患者的血清因子相关危险因素的探讨

..... 陈嵘,田磊,王慧(203)

腹腔镜切除术治疗胆管癌患者的血清 VEGF、COX-2 和

C 反应蛋白指标及临床疗效分析

..... 刘振勇(207)

II

- 赫赛汀联合艾瑞治疗方案对乳腺癌患者血清因子水平及血常规的影响分析
..... 李文楷,汤洪福(211)
- 重症肺部感染患者机械通气前后 hs-CRP、PCT 的变化情况及其与患者预后的关系分析
..... 周 燕(215)
- 血清 25-羟维生素 D 水平在非绝经期类风湿关节炎女性患者中的临床意义
..... 高照猛,张 磊(220)
- 混合感染对肺炎支原体患儿外周血 T 淋巴细胞亚群、常规生化指标水平的影响
..... 瞿凤宇,蒲开彬(224)
- 恩替卡韦联合干扰素对慢性乙型肝炎肝纤维化患者炎症标志物的影响研究
..... 郝艳爽,乔桂莲,何从容,等(228)
- 血清白蛋白、前白蛋白水平对非小细胞肺癌患者预后的影响
..... 刘益民,贾坤林,徐翠容,等(232)
- 血清肿瘤标志物、多层螺旋 CT 及核磁共振在诊断胆管癌中的应用比较
..... 张 明,黄玉霞(236)
- 血清 CA19-9 联合五项肝功能指标检测对胰腺癌早期肝转移预警的价值
..... 李小琼,罗 勤,赵 静,等(241)
- 急性心肌梗死患者 PCI 术后 LDL-C 水平与心血管事件的关系分析
..... 黄凤敏,彭 琪,韩 劼,等(245)
- 降钙素原、IFN- γ 和 IL-10 联合检测在支气管哮喘患者中变化及意义的相关性分析
..... 胡小容,张 承,徐 刚(250)
- 血浆 Hcy 及 sdLDL 对冠心病合并高脂血症患者心血管事件发生预测价值
..... 谢 军,褚 玲,刘 娟(253)
- 骨髓细胞形态学联合免疫固定电泳对多发性骨髓瘤患者的检测价值分析
..... 卢 姿,李学鸿,朱中元,等(258)
- 手术切除联合射频消融对结肠癌肝转移及对血清中 AFP 及免疫因子的效果分析
..... 俞林冲,戴海强,胡 飞(262)
- 妊娠期高血压综合征患者血清 Hcy 水平检测及妊娠结局调查研究
..... 程 坤,李亚玲,黄前伟(267)
- T 淋巴细胞亚群在儿童免疫性疾病病理机制中的调控作用
..... 李秋菊,蒋茂林(271)

基础研究

- 铁死亡与胶质母细胞瘤相关性探讨
..... 张文丽,孔凡虹,季 楠,等(275)

方法研究

- NGAL 两种检测方法在造影剂肾病中的诊断比较
..... 赵迎新,冯惠清,王建国,等(279)

实验室质量管理

- 人细小病毒 B19 IgG 抗体检测试剂国家参考品的建立及应用
..... 周海卫,田亚宾,郭世富,等(282)

综 述

- 放射免疫分析对提升核医学科综合实力的重要意义
..... 王闪闪(286)
- 妊娠期甲状腺功能减退对母体及子代影响的研究进展
..... 叶 梅,沙 玲,李少华(289)

病例报告

- 骨髓形态学联合流式细胞学诊断儿童神经母细胞瘤 1 例
..... 冯素芳(293)

英文摘要目录 (III)

Labeled Immunoassays and Clinical Medicine

Monthly Established in February 1994 Volume 25, Number 2 (Cumulated No. 136)

Feb. 25, 2018

Responsible Institution

China National Nuclear Corporation

Sponsor

China Isotope & Radiation Corporation

Editing

Editorial Board of Labeled Immunoassays
and Clinical Medicine

Editor-in-Chief

TIAN Ya-ping (田亚平)

President

WANG Ding-quan (王丁泉)

Publishing

CNNC (Beijing) Periodical Publishing Co.
Ltd.

Printing

Beijing Kexin Printing Co. Ltd.

Distribution

Beijing Publishing Bureau of China Post
Group Corporation

Mail-Order

CNNC (Beijing) Periodical Publishing Co.
Ltd.

Address

Room 305, 1A 2nd Block, Sanlihe, West
District, Beijing 100045, China

Tel (010) 68515701 (010) 68517801

CNNS

ISSN 1006 - 1703
CN 11 - 3294/R

CONTENTS IN BRIEF

Original Article

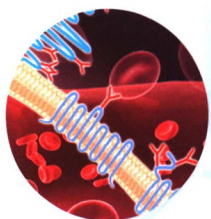
Clinical Investigation

- Association of Single Nucleotide Polymorphisms in FTO-rs17817449 and SEC16B-rs574367 with Metabolic Syndrome**
XU Xu, XIAO Jun, LIANG Guo-wei (149)
- Expression and Significance of STAT3 in Adenocarcinoma of Esophagogastric Junction**
LI Jian, HAN Guang-sen, FENG Wen, et al. (155)
- The Correlation Between Serum HDL2b with Atherosclerosis and Acute Coronary Syndrome**
YANG Cai-e, ZHANG Chun-yan, TIAN Ya-ping (158)
- Analysis of the Clinical Characters and Serum Biomarkers Between Gefitinib-sensitive and Resistant Patients with Innon-small Cell Lung Cancer**
ZHANG Huo-bing, TONG Neng-sheng, CANG Hong-yu, et al. (162)
- Tau Phosphorylation and Total Tau Protein Levels and PP2A Activity in Patients with Diabetes Mellitus and Cognitive Impairment After Diabetes Mellitus**
LI Jun, ZHU Chang-qin, LIANG Jin-ling, et al. (167)
- The Effect of Montelukast Sodium on the Expression of Serum IL-6, IL-8 and Sicam-1 in Children with Allergic Purpura**
WANG Yao, QI Guang-chang (171)
- The Relationships Among the Expression Levels of Ki67, p53 and FHIT, the Clinicopathological Parameters and the Prognosis of Renal Cell Carcinoma**
CHEN Ju-li, LI Jing (174)
- Significance of Detection of Inhale Allergen in the 203 Cases of Bronchial Asthma in Children**
WANG Chang-ming, YAO Yong-jie, LI Hua-xin (179)
- To Investigate the Changes and Significance of IL-6, IL-1 β and Inflammatory Factors of Gouty Arthritis with Low Uric Acid**
QIAN Kai, ZHANG Jun-yu, LI Chun-mei, et al. (183)
- The Relationship Between Serum Golgi Protein 73 and Liver Fibrosis**
YING Xiao-wen, YU Ying, LIU Wen, et al. (186)
- Clinical Study of Predicting Value of Serum PSA, T and D-D Levels in Patients with Pathologic Stage of Prostste Cancer**
LI Mei, JANG Xiao-ming (192)
- Study on the Serum sdLDL-C Levels Both in Mongolian and Han Populations in Hohhot**
WANG Mei-ying, HAN Yan-qiu (195)
- The Study on Hormone Disorder Effects on Clinical Diagnosis and Prognosis of the Spontaneous Subarachnoid Hemorrhage**
LIU Lan, GUO Jun (199)
- Risk Factors Associated with Serum Factors in Patients with Diabetes Complicated with Osteoporosis**
CHEN Rong, TIAN Lei, WANG Hui (203)
- The Analysis of Serum VEGF, COX-2 and C Reactive Protein Indicators and Clinical Efficacy in Patients with Cholangiocarcinoma Treated by Laparoscopic Resection**
LIU Zhen-yong (207)
- The Analysis of the Effect of Combined Treatment of Herceptin and Winfrey on Factor Levels in Serum of Patients with Breast Cancer and Blood**
LI Wen-kai, TANG Hong-fu (211)

Changes of hs-CRP and PCT in Patients with Severe Pulmonary Infection Before and After Mechanical Ventilation and Its Relationship with Prognosis	
ZHOU Yan	(215)
Clinical Significance of Serum 25-Hydroxy Vitamin D Levels in Female Patients with Non-menopausal Rheumatoid Arthritis	
GAO Zhao-meng, ZHANG Lei	(220)
Effect of Mixed Infection on T Lymphocyte Subsets and Routine Biochemical Parameters in Peripheral Blood of Children with Mycoplasma Pneumonia	
QU Feng-yu , PU Kai-bin	(224)
Influence on Inflammatory Markers of Entecavir Combined with Interferon in Patients with Chronic Hepatitis B with Hepatic Fibrosis	
HAO Yan-shuang, QIAO Gui-lian, HE Cong-rong , et al.	(228)
Prognostic Value of Serum ALB and PAB in Patients with Non-small Cell Lung Cancer	
LIU Yi-min, JIA Kun-lin, XU Cui-rong, et al.	(232)
Application of Serum Tumor Markers, Multi-slice Spiral CT and Magnetic Resonance Imaging in the Diagnosis of Bile Duct Carcinoma	
ZHANG Ming, HUANG Yu-xia	(236)
The Value of Serum CA19-9 Combined with Five Liver Function Indexes in Early Warning of the Liver Metastasis of Pancreatic Cancer	
LI Xiao-qiong, LUO Qin, ZHAO Jing, et al.	(241)
Analysis of Relationship Between LDL-C Level and Cardiovascular Events After PCI in Patients with Acute Myocardial Infarction	
HUANG Feng-min, PENG Qi, HAN Jie, et al.	(245)
Expression and Significance of Procalcitonin, IFN-γ and IL-10 in Sera of Patients with Bronchial Asthma	
HU Xiao-rong , ZHANG Cheng, XU Gang	(250)
Evaluation of Plasma Hcy and sdLDL in Cardiovascular Events in Patients with Coronary Heart Disease complicated with Hyperlipidemia	
XIE Jun, CHU Ling, LIU Juan	(253)
Detection of Bone Marrow Cell Morphology Combined with Immunofixation in Patients with Multiple Myeloma	
LU Zi, LI Xue-hong, ZHU Zhong-yuan, et al.	(258)
Effect of Surgical Resection Combined with Radiofrequency Ablation on Liver Metastasis of Colon Cancer and Serum AFP and Immune Factors	
YU Lin-chong, DAI Hai-qiang, HU Fei	(262)
Study on Serum Hcy Level and Pregnancy Outcome in 200 Cases of Pregnancy-induced Hypertension in Tongren City	
CHENG Kun, LI Ya-ling, HUANG Qian-wei	(267)
The Regulation of T Lymphocyte Subgroups in the Pathologic Mechanism of Childhood Immunological Diseases	
LI Qiu-ju, JIANG Mao-lin	(271)
Basic Research	
Study of Correlation Between Ferroptosis and Glioblastoma	
ZHANG Wen-li, KONG Fan-hong, JI Nan, et al.	(275)
Assay Development	
The Diagnostic Comparison of the Two Detection Methods of Neutrophil Gelatinase-associated Lipocalin in Contrast Nephropathy	
ZHAO Ying-xin, FENG Hui-qing, WANG Jian-guo, et al.	(279)
Laboratory Quality Management	
Establishment and Application of the Reference Panel for Human Parvovirus B19IgG Detection Kits	
ZHOU Hai-wei, GUO Shi-fu, HUANG Ying, et al.	(282)
Review	
The Significances of Radioimmunoassay for Improving the Comprehensive Strength of Nuclear Medicine	
WANG Shan-shan	(286)
Progress of Maternal Hypothyroidism and Its Influence on Maternal and Offspring Health	
YE Mei, SHA Ling, LI Shao-hua	(289)

社 长 王丁泉
副 社 长 李 凌
编 辑 张增武 李 凌 潘子昂
本期责任编辑 李 凌
本期英文审校 宋文字 刘丽君

小而密低密度脂蛋白胆固醇测定试剂盒 (过氧化物酶法)



适用于生化分析仪



液体试剂

过氧化物酶法

禁忌内容或注意事项详见说明书

追求卓越 成就未来

金斯尔·九强生物旗下体外诊断试剂品牌

北京九强生物技术股份有限公司 Beijing Strong Biotechnologies, Inc.

地址：北京市海淀区花园东路15号旷怡大厦5层 电话：+86-10-82012486

网址：www.bsbe.com.cn 免费电话：800-810-0197

医疗器械注册证编号：京械注准20162400155

广告批准文号：京医械广审（文）第2017070513号