

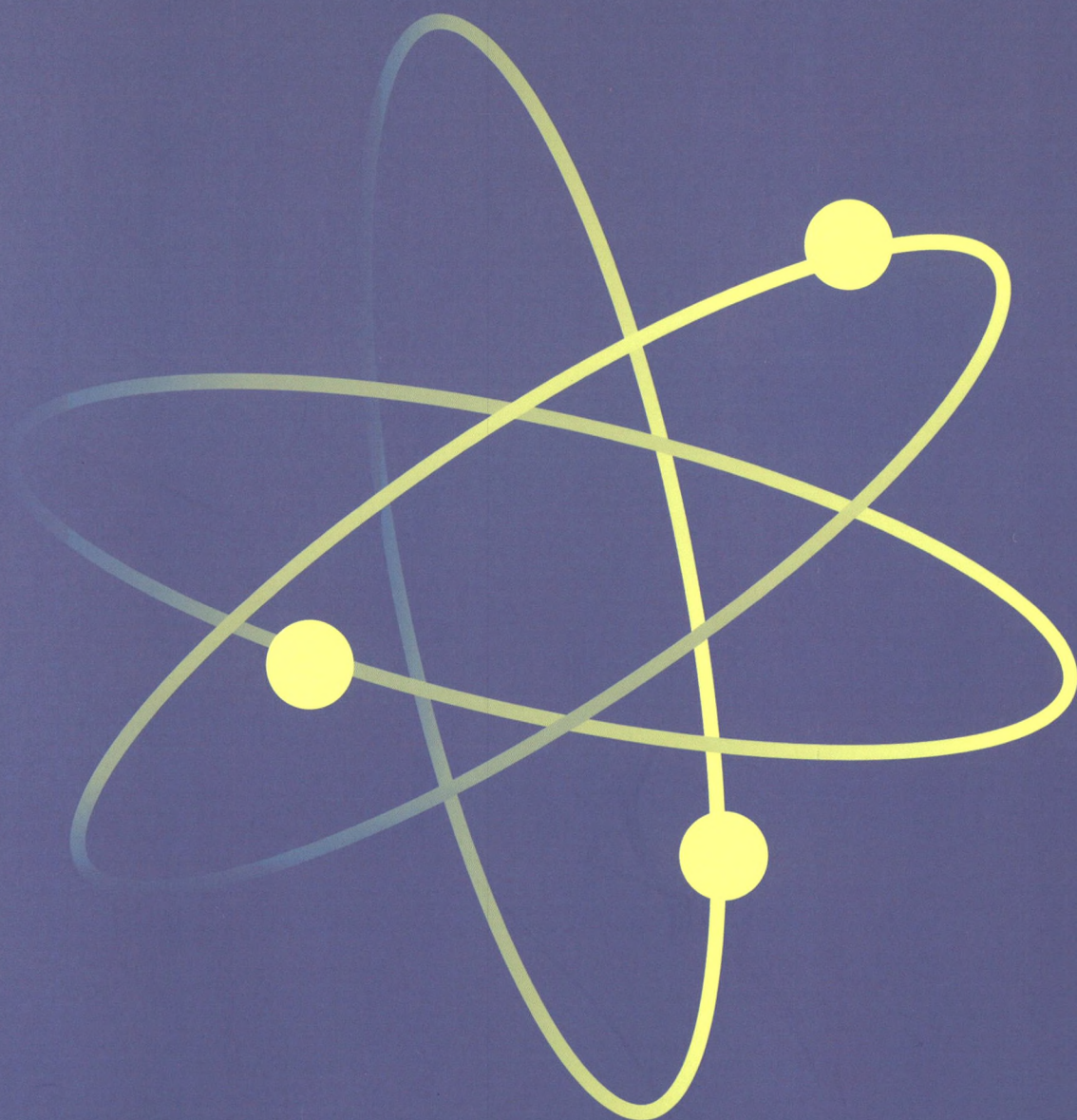
中国科技论文统计源期刊 (中国科技核心期刊)

QK1915699

标记免疫分析与临床

BIAOJI MIANYI FENXI YU LINCHUANG
LABELED IMMUNOASSAYS AND CLINICAL MEDICINE

2019年 第26卷 第4期
Vol. 26 No. 4 2019



ISSN 1006-1703



万方数据

中国同辐股份有限公司
China Isotope & Radiation Corporation

标记免疫分析与临床

Labeled Immunoassays and Clinical Medicine

月刊

1994年2月创刊

第26卷

第4期(总150期)

2019年4月25日出版

主管

中国核工业集团有限公司

主办

中国同辐股份有限公司

编辑

标记免疫分析与临床编辑委员会

主编

田亚平

编辑部主任

李凌

出版

中核(北京)期刊出版有限公司

印刷

北京科信印刷有限公司

发行

公开发行业

中国邮政集团公司北京市报刊发行局

订购

全国各地邮政局

邮发代号:2-307

邮购

中核(北京)期刊出版有限公司

定价

每期25元

全年300元

地址

北京市西城区三里河二区甲1号305室

邮编100045

电话

(010)68515701

(010)68517801

网址

www.chinabjmy.com

E-mail

bjmy@circ.com.cn

中国标准连续出版物号

ISSN 1006-1703

CN 11-3294/R

目次

论著

临床研究

- Lp-PLA2 的检测在冠状动脉狭窄患者中的临床意义
..... 谭明娟, 崔薇薇, 金玲, 等(541)
- 肝癌患者 TACE 术治疗前后血清 VEGF、bFGF、HIF-1 α
水平变化及其临床意义
..... 古曦, 刘畅, 刘双双, 等(546)
- 关节镜技术联合超前多模式镇痛治疗踝关节创伤性
骨关节炎的疗效
..... 李静, 刘依嘉, 姚冬英, 等(550)
- NT-pro BNP、CRP 和 D-Dimer 与慢性阻塞性肺疾病
急性加重期合并肺动脉高压的相关性研究
..... 赵松林, 聂秀红(555)
- 腹腔镜肝癌切除术对肝癌患者转氨酶、FGF 及淋巴细胞的影响
..... 马颖, 罗艳丽, 谢泽荣, 等(560)
- 系统性硬皮病血小板参数分析
..... 陆群, 殷继华, 赵延荣(565)
- 胰岛素治疗对老年 2 型糖尿病合并骨质疏松症患者
CTX 及 BGP 水平的影响
..... 贾海梅, 蔡艳丽(567)
- 高通量血液透析对 2 型糖尿病肾病患者毒素清除和
炎症因子、氧化应激因子水平的影响
..... 何建忠, 陈光权(571)
- MP-IgM、YKL-40、APOC1 和 IL-6 在儿童支原体肺炎治疗
及预后中的意义
..... 李智琼, 孙承谋, 朱玲娜, 等(576)
- 急性有机磷农药中毒患者血清 AST、cTnI、ChE 水平变化
及其与病情严重程度相关性分析
..... 兰蓉(580)
- 纤维蛋白原和血小板联合检测在胃癌诊断和预后中的
价值分析
..... 李敏, 蔡晓龙(585)
- 长链非编码 RNA *LINC00993* 在不同分子亚型乳腺癌中
的表达特点及与临床特征的关系研究
..... 李洋, 蔡毅(592)
- 碘-125 粒子植入联合化学治疗原发舌鳞癌的疗效观察
..... 邵梦麟, 胡天鹏, 丁恩慈, 等(597)
- CHF 患者心功能相关指标与血清 CA125、BNP、Hcy、
FGF23 水平的关系研究
..... 代小川, 曾玉龙, 张新悦(600)
- 尿液中的足细胞标志蛋白定量检测应用于糖尿病和
糖尿病肾病诊断中的价值比较
..... 林兵英, 罗晓燕, 方周宾, 等(604)
- 慢阻肺引发肺动脉高压预后评价与 ET-1、H₂S、NO 的
相关性研究
..... 陈海华, 庄兰妹, 李志娟, 等(607)

II

- 妊娠4~9周孕妇血清hCG、E₂水平与先兆流产的相关性分析
..... 邓永红,王 璟,颜爱华(612)
- 血清同型半胱氨酸与糖尿病合并颈动脉斑块形成的关系及预后研究
..... 胡旗帜(616)
- ApoA-1、MDA、Cys-C和血流动力学指标与帕金森病认知功能的相关性研究
..... 陈伟巍,王 敏(620)
- 血液透析患者血清SF、TSAT水平与营养状况的相关性分析
..... 李 梅,黄 楠,陈 曦(625)
- 多囊卵巢综合征患者抗苗勒管激素水平与辅助生殖优胚率之间的关联分析
..... 钟树怀,伍玉燕,梁泳娜(629)
- 血浆髓过氧化物酶水平与冠状动脉狭窄程度的相关性分析
..... 王光彦,高冬花,刘晓明,等(634)
- 血清SCC-Ag、CEA、CYFRA21-1及HE4联合检测在宫颈癌诊断中的意义
..... 王玉婧,查 毅(637)
- 索拉菲尼联合TACE治疗中晚期原发性肝癌的疗效观察及对患者血清AFP、VEGF水平的影响
..... 王 健,李荣军,徐春霞,等(641)
- 慢阻肺并发肺动脉高压患者血清CRP、IL-6和TLR4的差异表达及相关性分析
..... 曹秀丽,焦建华,张智慧,等(645)
- 男性不育症患者促黄体生成素、抗精子抗体指标水平及其与精子前向运动的相关性分析
..... 邓 敏,赵洪福(650)
- 女性高血压患者左心室肥厚相关因素分析及补充维生素D的意义
..... 陈荣花,宋巧凤,王希柱,等(654)
- 腹腔镜胆囊切除术治疗对老年非急性胆囊炎患者围术期指标及预后的影响
..... 周 杰,蒋秀娟,罗 红,等(658)
- 血清中PD-1、TPS与Ferritin水平联合检测在非小细胞肺癌诊断中的价值
..... 姚力侯,唐友东(662)
- 肺炎支原体肺炎患儿支原体抗体IgG滴度、年龄、CRP、乳酸、ALT、CKMB、胸片变化的临床意义
..... 温晓滨,李 焰,向 玲(667)
- 心肌钙蛋白、肌酸激酶、总胆固醇及同型半胱氨酸的检测在心血管疾病诊断中的应用价值
..... 吴红丹,胡益蓉(671)
- 血清SCCA、CEA、CA125、CA19-9联合检测在宫颈癌与癌前病变鉴别诊断中的应用价值
..... 张 瑜(675)
- 血清sVCAM-1、NSE与Gal-9联合检测病毒性脑炎患儿病情程度变化的判定价值
..... 姜雪莹,任 丹,赵荣香,等(679)
- 填充材料修复对牙种植患者临床疗效、血糖、血清ALT、AST及不良反应的影响
..... 杨 艺,郑向明,李冰玉,等(683)
- 等离子扁桃体切除与扁桃体常规剥离法切除对患者围术期指标、术后疼痛及并发症的影响
..... 邓雅玲(687)
- 多索茶碱联合布地奈德治疗对支气管哮喘患者肺功能、外周血Th1、Th2与Th17细胞水平的影响
..... 李 倩,邵单炫,张 华,等(691)
- 血清IL-2与IL-17水平动态检测对Graves眼病病情的评估价值
..... 张红军,赵 敏(695)

基础研究

- miR-146a介导PI3K/Akt信号通路抑制肝星状细胞诱导的肝纤维化
..... 杨志欣,付淑姣(699)
- 异氟醚对老龄大鼠认知功能障碍、GSK-3 β 及炎性因子的影响
..... 冯海妹,韦雪梅(704)
- miR-1254靶向GLTSCR2调控非小细胞肺癌增殖和活力
..... 李爱明,揭俊卿,刘宝顺(708)

方法研究

- BECKMAN DXI800化学发光检测系统固定吸试剂针前后雌二醇测定结果的比较分析
..... 黎 华,黎 静,朱松山(714)
- 阴道分泌物六联检法和白带常规镜检的对比分析
..... 王荣祺,李 岩,边春红,等(718)

英文摘要目次 (III)

Labeled Immunoassays and Clinical Medicine

Monthly Established in February 1994 Volume 26, Number 4 (Cumulated No. 150)

Apr. 25, 2019

Responsible Institution	CONTENTS IN BRIEF Original Article Clinical Investigation The Clinical Significance of the Detection of Lp-PLA2 in Patients with Coronary Artery Stenosis TAN Ming-juan, CUI Wei-wei, JIN Ling, et al. (541) Changes of Serum VEGF, bFGF and HIF-1α Levels in Patients with Liver Cancer Before and After TACE and Their Clinical Significances GU Xi, LIU Chang, LIU Shuang-shuang, et al. (546) The Efficacy of Arthroscopic Technique Combined with Multimodal Preemptive Analgesia in the Treatment of Traumatic Osteoarthritis of Ankle Joint LI Jing, LIU Yi-jia, YAO Dong-ying, LI Jian, et al. (550) A Correlation Study of Serum NT-pro BNP, CRP and D-Dimer Levels in Patients of AECOPD Accompanied by Pulmonary Hypertension ZHAO Song-Lin, NIE Xiu-Hong (555) The Effects of Laparoscopic Hepatectomy on Transaminase, FGF and Lymphocytes in Patients with Hepatocellular Carcinoma MA Ying, LUO Yan-li, XIE Ze-rong, et al. (560) An Analysis of Platelet Parameters in Patients with Systemic Sclerosis LU Qun, YIN Ji-hua, ZHAO Yan-rong (565) Effect of Insulin Therapy on the Levels of CTX and BGP in Elderly Patients with Type 2 Diabetes Mellitus and Osteoporosis JIA Hai-mei, CAI Yan-li (567) Effects of High-flux Hemodialysis on Toxin Clearance and Levels of Inflammatory Factors and Oxidative Stress Factors in Patients with Type 2 Diabetic Nephropathy HE Jian-zhong, CHEN Guang-quan (571) Therapeutic and Prognostic Significance of MP-IgM, YKL-40, APOC1 and IL-6 in Children with Mycoplasma Pneumoniae LI Zhi-qiong, SUN Cheng-mou, ZHU Ling-na, et al. (576) The Changes of Serum AST, cTnI and ChE Levels in Patients with Acute Organophosphorus Pesticide Poisoning and Their Correlations with the Severity of the Disease LAN Rong (580) An Analysis of the Value of Combined Detection of Fibrinogen and Platelet in the Diagnosis of Gastric Cancer and Prognosis LI Min, QI Xiao-long (585) The Expression of Long Chain Non-Coding RNA <i>LINC00993</i> in Different Molecular Subtypes of Breast Cancer and Its Relationship with Clinical Characteristics LI Yang, CAI Yi (592) The Clinical Value of ¹²⁵I Seeds Implantation Combined with Chemotherapy for Tongue Cancer SHAO Meng-lin, HU Tian-peng, DING En-ci, et al. (597) The Relationship Between Cardiac Function Related Indicators and Levels of CA125, BNP, Hcy and FGF23 in Patients with CHF DAI Xiao-chuan, ZENG Yu-long, ZHANG Xin-yue (600) A Comparison of Quantitative Detection of Podocalyxin in Urine for the Diagnosis of Diabetes Mellitus and Diabetic Nephropathy LIN Bing-ying, LUO Xiao-yan, FANG Zhou-bin, et al. (604) The Correlation Between Prognosis of Pulmonary Hypertension Induced by Chronic The Correlation Between Prognosis of Pulmonary Hypertension Induced by Chronic Obstructive Pulmonary Disease and Levels of ET-1, H₂S and NO CHEN Hai-hua, ZHUANG Lan-mei, JI Zhi-juan, et al. (607) Correlation Between Serum hCG and E₂ Levels and Threatened Abortion in Pregnant Women with 4 -9 Weeks of Gestation DENG Yong-hong, WANG Jing, YAN Ai-hua (612) Research of the Relationship Between Serum Homocysteine and Patients with Diabetes Mellitus Complicated with Carotid Plaque Formation and Its Prognosis HU Qi-zhi (616) The Correlations Between ApoA-1, MDA, Cys-C and Hemodynamic Parameters and Cognitive Function of Parkinson' Disease CHEN Wei-wei, WANG Min (620)
China National Nuclear Corporation	
Sponsor	
China Isotope & Radiation Corporation	
Editing	
Editorial Board of Labeled Immunoassays and Clinical Medicine	
Editor-in-Chief	
TIAN Ya-ping(田亚平)	
Editorial Director	
LI Ling(李凌)	
Publishing	
CNNC(Beijing) Periodical Publishing Co. Ltd.	
Printing	
Beijing Kexin Printing Co. Ltd.	
Distribution	
Beijing Publishing Bureau of China Post Group Corporation	
Mail-Order	
CNNC(Beijing) Periodical Publishing Co. Ltd.	
Address	
Room 305, 1A 2nd Block, Sanlihe, West District, Beijing 100045, China	
Tel (010) 68515701 (010)68517801	
CNNS	
ISSN 1006 - 1703 CN 11 - 3294/R	

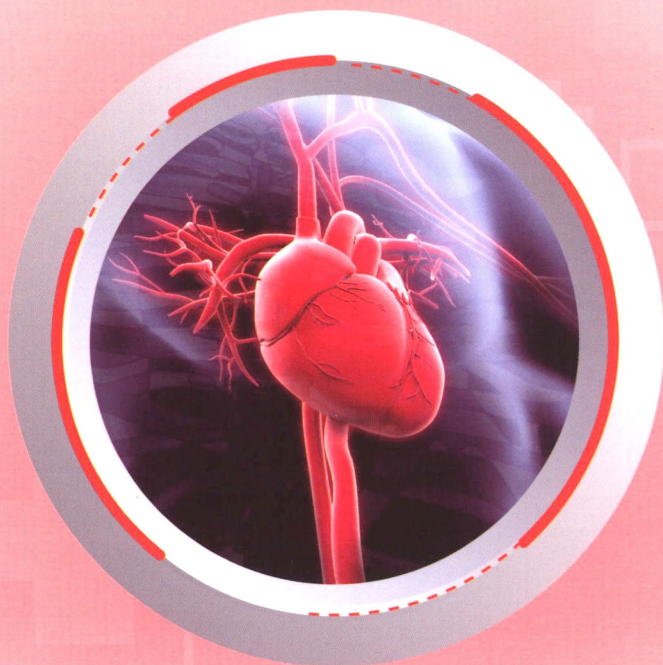
The Correlation Between Serum SF and TSAT Levels and Nutritional Status in Patients Undergoing Hemodialysis LI Mei, HUANG Nan, CHEN Xi	(625)
A Study of the Association Analysis Between Basic Anti-Mullerian Hormone Level and Assisted Reproductive Rate in Patients with Polycystic Ovary Syndrome ZHONG Shu-huai, WU Yu-yan, LIANG Yong-na	(629)
The Correlation Between Plasma Myeloperoxidase Level and Severity of Coronary Artery Stenosis WANG Guang-yan, GAO Dong-hua, LIU Xiao-ming, et al.	(634)
The Significance of Combined Detection of Serum SCC-Ag, CEA, CYFRA21-1 and HE4 in the Diagnosis of Cervical Cancer WANG Yu-jing, CHA Yi	(637)
The Curative Effect of Sorafenib Combined with TACE in the Treatment of Advanced Primary Liver Cancer and Its Influence on Serum AFP and VEGF Levels WANG Jian, LI Rong-jun, XU Chun-xia, et al.	(641)
The Differential Expression and Correlation Analysis of Serum CRP, IL-6 and TLR4 in Patients with Chronic Obstructive Pulmonary Disease Complicated with Pulmonary Hypertension CAO Xiu-li, JIAO Jian-hua, ZHANG Zhi-hui, et al.	(645)
The Correlation Between Luteinizing Hormone, Anti-sperm Antibody Levels and Sperm Forward Motion in Male Infertility Patients DENG Min, ZHAO Hong-fu	(650)
The Relevant Factors of Left Ventricular Hypertrophy in Female Patients with Hypertension and the Significance of Vitamin D Supplementation CHEN Rong-hua, SONG Qiao-feng, WANG Xi-zhu, et al.	(654)
The Effect of Laparoscopic Cholecystectomy on Perioperative Index and Prognosis in Elderly Patients with Non-acute Cholecystitis ZHOU Jie, JIANG Xiu-juan, LUO Hong, et al.	(658)
A Study on the Application Value of Combined Detection of PD-1, TPS and Ferritin in the Diagnostic Process of Non-small Cell Lung Cancer YAO Li-ying, TANG You-dong	(662)
The Clinical Significances of Serum Mycoplasma IgG Antibody Titer, Age, Serum C-reactive Protein, Blood Lactate Value, Alanine Aminotransferase, CKMB and Chest X-ray in Patients with Mycoplasma Pneumoniae Pneumonia WEN Xiao-bin, LI Yan, XIANG Ling	(667)
The Clinical Values of Cardiac Troponin, Creatine Kinase, TC, HCY for the Testing of Coronary Heart Disease WU Hong-dan, HU Yi-rong	(671)
The Application Value of Combined Detection of Serum SCCA, CEA, CA125 and CA19-9 in the Differential Diagnosis of Cervical Cancer and Precancerous Lesions ZHANG Yu	(675)
The Clinical Values of Serum sVCAM-1, NSE and Gal-9 in Detecting the Change of Disease Severity in Children with Viral Encephalitis JIANG Xue-ying, REN Dan, ZHAO Rong-xiang, et al.	(679)
The Effects of Haiao Prosthodontics Membrane Combined with Bone Filling Material Repair on Clinical Efficacy, Blood Glucose, Serum ALT, AST and Adverse Reactions in Patients with Dental Implantation YANG Yi, ZHENG Xiang-ming, LI Bing-yu, et al.	(683)
The Effects of Plasma Tonsillectomy and Conventional Dissection Tonsillectomy on Perioperative Indexes, Postoperative Pain and Complications DENG Ya-ling	(687)
The Effects of Doxofylline Combined with Budesonide on Pulmonary Function, Peripheral Blood Th1, Th2 and Th17 Cells Levels in Patients with Bronchial Asthma LI Qian, SHAO Dan-xuan, ZHANG Hua, et al.	(691)
The Clinical Value of Dynamic Detection of Levels of Serum IL-2 and IL-17 in the Assessment of Graves' Ophthalmopathy ZHANG Hong-Jun, ZHAO Min	(695)
Basic Research	
miR-146a Inhibits Hepatic Stellate Cell-induced Hepatic Fibrosis by Mediating PI3K/Akt Signaling Pathway YANG Zhi-xin, FU Shu-jiao	(699)
The Changes of Cognitive Dysfunction, GSK-3 Beta and Inflammatory Response Induced by Isoflurane Anesthesia in Aged Rats FENG Hai-mei, WEI Xue-mei	(704)
miR-1254 Targeting GLTSCR2 to Regulate the Proliferation and Viability of Non-small Cell Lung Cancer LI Ai-ming, JIE Jun-qing, LIU Bao-shun	(708)
Assay Development	
BECKMAN DXI800 Chemiluminescence Detection System Fixed the Reagent Needle Before and After Comparative Analysis of the Determination Results of Estradiol LI Hua, LI Jing, ZHU Song-shan	(714)
Comparative Analysis of Vaginal Secretion 6-item Combined Inspection and Leucorrhea Routine Examination WANG Rong-qi, LI Yan, BIAN Chun-hong, et al.	(718)

社 长 王丁泉
副 社 长 李 凌
本 期 编 辑 李 凌 潘子昂
责 任 编 辑 李 凌
英 文 审 校 宋文宇 刘丽君

期刊基本参数: CN 11 - 3294/R * 1994 * M * A4 * 180 * zh * P * ¥25.00 * 1100 * 42 * 2019-04

肌酸激酶同工酶测定试剂盒

CKMB mass



● 液体试剂 ● 胶乳免疫比浊法 ● 适用于生化分析仪

1 胶乳免疫比浊法测定CKMB质量(单位:ng/mL)。

2 CKMB质量对于因素干扰稳定性好于活性的稳定性。

金斯尔·九强生物旗下体外诊断产品品牌

北京九强生物技术股份有限公司 Beijing Strong Biotechnology, Inc.

地址:北京市海淀区花园东路15号旷怡大厦5层 电话:+86-10-82012486

网址:www.bsbe.com.cn 免费电话:400-819-0576

医疗器械注册证编号:京械注准20182400328

广告批准文号:京医械广审(文)第2019020166号

—— 禁忌内容或注意事项详见说明书 ——