



ISSN 1007-0435

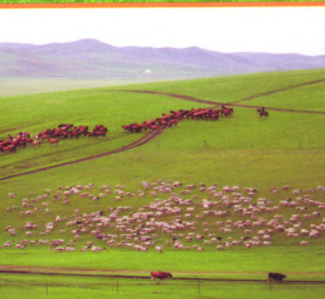
CN 11-3362/S



QK1823378

草地学报

ACTA AGRESTIA SINICA



中文核心期刊

中国科技核心期刊

《中国科学引文数据库》(C库)源期刊

美国《化学文摘》(CA)收录期刊

美国汤姆森·路透数据库(Thomson Reuters)源期刊

英国《国际农业与生物科学中心文摘》(CABI)收录期刊

英国《动物学记录》(ZR)收录期刊

波兰《哥白尼索引》(IC)收录期刊

万方数据

1

Vol.26

2018

中文核心期刊
中国科技核心期刊
中国农业核心期刊
RCCSE 中国权威学术期刊
《中国科学引文数据库》C 库期刊
《CAJ-CD 规范》执行优秀期刊
中国科协精品科技期刊工程项目

草地学报

CAODI XUEBAO

ACTA AGRESTIA SINICA

第 1 期

第 26 卷

2018 年 1 月

1991 年创刊(双月刊)

主管:中国科学技术协会

主办:中国草学会

承办:中国农业大学

主 编:王 埏

编辑部主任:周 禾

责任编辑:贾 婉

英文编辑:刘克思,张万军,

王克华

编 务:田素华

编辑出版:《草地学报》编辑部

地址:北京海淀区圆明园西路 2 号

中国农业大学动科大楼 152 室

邮编:100193

电话/传真:(010)62733894

E-mail:cdxb@cau.edu.cn

http://www.cdxb.org

印刷:北京科信印刷有限公司

国内总发行:北京报刊发行局

订阅:全国各地邮局(所)

国内邮发代号:80-135

国内每期定价:25.00 元

国外总发行:中国国际图书贸易

总公司

国外发行代号:1949(BM)

ISSN 1007-0435

刊号:CN 11-3362/S

基本参数:

CN11-3362/S*1991*b*A₄

*266*zh*P*25.00*500

*35*2018-01

目 次

专论与进展

青藏高原“黑土滩”退化草地及其生态恢复近 10 年研究进展——兼论三江源生态恢复问题 ... 尚占环,董全民,施建军,等(1)

关于生态功能与管理的生物土壤结皮研究 戴黎聪,柯 浔,曹莹芳,等(22)

研究论文

基于生态服务价值的三江源生态工程成本效益分析 刘璐璐,邵全琴,曹 巍,等(30)

青绿苔草蒸散特性及与其他草皮地的比较研究 袁小环,武菊英,滕文军,等(40)

黄河源区黑土滩人工草地地表结皮与未结皮区土壤微生物多样性 李发祥,张 涛,罗玉珠,等(45)

干旱区土地利用/覆盖变化与生态环境效应研究——以渭—库绿洲为例 古丽波斯丁·巴图,丁建丽,李艳菊(53)

近 15 年呼伦贝尔沙质草原植被覆盖变化对气候因子的响应 张惜伟,汪 季,高 永,等(62)

裸木种群遗传多样性特点及与地理气候因子关联研究 徐振朋,宛 涛,蔡 萍,等(70)

贝加尔针茅草原土壤线虫与微生物群落特征及其相互作用 张爱林,赵建宁,洪 杰,等(77)

青藏高原公路两侧草地土壤种子库特征研究——以国道 214 公路共玉公路段为例 陈学平,杨艳刚,尚占环,等(85)

留茬高度对典型草原大针茅种群特征影响的研究 王 玺,贾丽欣,乔芙蓉,等(92)

5 个羊茅品种在川中丘陵地区生产性能综合评价 张 帆,李小梅,宋 鑫,等(99)

不同水肥组合对苜蓿品质的影响 毕舒盼,曹 婧,李 跃,等(105)

种植密度对紫花苜蓿不同生育时期叶片 C、N、P 生态化学计量的影响 刘文兰,师尚礼,田福平,等(114)

西北半干旱区引种燕麦品种产量与品质的关联分析及评价 南 铭,赵桂琴,李 晶,等(125)

不同放牧制度对高原鼠兔活动区高寒草地群落结构影响 王玉琴,鲍根生,王宏生,等(134)

两种养分水平条件下结缕草分株生根比例变化对克隆生长的影响 负小涛,周立新,李德志,等(142)

川西北高原鼠兔危害程度分级及适应性管理对策 孙飞达,苟文龙,朱 灿,等(152)

衡阳紫色土丘陵坡地植被恢复过程中土壤质量评价 陈 璟,杨 宁(160)

青藏高原高寒栽培草地植物在光照变化和增温影响下矿物元素蓄积分异性初探 李天才,曹广民,林 丽,等(168)

陇东旱塬果园生草对土壤水分及苹果树生长的影响 白岗桢,郑锁林,邹超煜,等(173)

蝗虫微孢子与昆虫生长调节剂协同控制草原蝗虫作用机制 星学军(184)

几种非常规粗饲料养分及其饲用价值的比较研究 王 郝,侯振平,杨焕胜,等(189)

不同白羊草居群对于旱胁迫的生理响应及抗旱性评价 钟 华,董 洁,郭晋梅,等(195)

牧草对滨海盐渍土主要阳离子的影响 张 涛,张 倩,田秀平,等(203)

不同形态及配比的氮素对高寒草甸植物生长高度和生物量的影响 芦光新,李 欣,党 宁,等(210)

⁶⁰Co-γ 射线辐射对苜蓿幼苗生长和两种抗氧化酶活性的影响 李 红,李 波,杨 翌,等(216)

秋末刈割对沙地苜蓿冬季根颈抗氧化酶活性及脯氨酸含量的影响 朱爱民,张玉霞,王显国,等(222)

GA₃ 浸种对露蕊乌头种子休眠及萌发生理特性的影响 马文静,赵 颖,魏小红,等(231)

技术研发

青贮饲料有氧稳定性测定装置的设计与验证 郑 毅,唐鸿宇,李天宇,等(238)

基于 CoLM 模式的干旱区土壤湿度模拟试验与误差分析 江红南,许剑辉(244)

近红外漫反射光谱定量分析天然牧草营养成分 刘 哲,王玉琴,薛树媛,等(249)

研究专报

川中丘陵区复播青贮玉米品种特性试验 田效琴,李 卓,刘永红(256)

品种和收获期对全株玉米生物产量和青贮品质的影响 王运涛,杨志敏,刘建成,等(261)

四种多年生禾本科牧草引种试验 李莲香(264)

欢迎投稿 欢迎订阅

《草地学报》是中国科协主管、中国草学会主办、中国农业大学承办的学术刊物,是了解草地科学前沿科技、创新成果和草业发展的重要窗口。刊登国内外草地科学研究及相关领域的新成果、新理论、新进展,以研究论文为主,兼发少量专稿、综述、简报和博士论文摘要,主要面向从事草地科学、草地生态、草地畜牧业和草业及相关领域的高校师生和科研院所、站的科研人员。稿件要求详见本刊《投稿须知》。

《草地学报》被国内外多家重要检索机构收录,入编北京大学图书馆和北京高校图书馆期刊工作研究会主持完成的《中文核心期刊要目总览》(2011 年版),2012 年影响因子为 1.202(据中信所 2013 版《中国科技期刊引证报告(核心版)》)。

本刊逢单月月末出版,国内外公开发行。国内邮发代号:80-135;国外代号:Q1949。每期定价 25 元,全年 150 元。若错过邮订时间,可直接向本刊编辑部订购(中国草学会会员订阅可优惠 30%)。

开户名:中国草学会 开户行:北京农商银行海淀区支行农大分理处
账 号:040703010300000056

ACTA AGRESTIA SINICA

No. 1, 2018

Vol. 26

Started in 1991(Bimonthly)

Administration Agency

China Association for Science
and Technology

Sponsored by

Chinese Grassland Society
China Agricultural University,
Beijing 100193

Editor-in-Chief

WANG Kun

Responsible Editor

JIA Wan

TIAN Su-hua

Edited by

Editorial Board of A. A. S.

Tel. /Fax: 010-62733894

E-mail: cdxh@cau. edu. cn

http://www.cdxh.org

Printed by

Beijing Kexin

Printing Co., Ltd.

Distributed by

Beijing Bureau for Distribution
of Newspapers and Journals

Domestic

All Local Post Offices in China
(Periodical No. 80-135)

Foreign

China International Book Trading
Corporation(P. O. Box 399, Beijing,
China)(Code:1949BM)

CONTENTS

Research Progress in Recent Ten Years of Ecological Restoration for 'Black Soil Land' Degraded Grassland on Tibetan Plateau--Concurrently Discuss of Ecological Restoration in Sangjiangyuan Region	SHANG Zhan-huan, DONG Quan-min, SHI Jian-jun, <i>et al</i> (1)
The Study on Ecological Functions and Management of Biological Soil Crusts	DAI Li-cong, KE Xun, CAO Ying-fang, <i>et al</i> (22)
Cost-Benefit Analysis of the Ecological Protects in the Three-River Headwaters Region Based on Ecosystem Services Values	LIU Lu-lu, SHAO Quan-qin, CAO Wei, <i>et al</i> (30)
Evapotranspiration Characteristics of <i>Carex leucochlora</i> and Comparison with Other Turfs and Groundcovers	YUAN Xiao-huan, WU Ju-ying, TENG Wen-jun, <i>et al</i> (40)
Soil Microbial Diversity in Surface Crust and Non-Crust of Artificial Grassland in Black Soil Region of the Yellow River Source Region	LI Fa-xiang, ZHANG Tao, LUO Yu-zhu, <i>et al</i> (45)
Land Use /Land Cover Change and Its Environmental Effects in Ugan-Kuqa River Delta Oasis	GULIBOSITAN-Batu, DING Jian-li, LI Yan-ju (53)
Responses of Vegetation Changes to Climatic Variations in Hulun Buir Sandy Grassland in the Past 15 Years	ZHANG Xi-wei, WANG Ji, GAO Yong, <i>et al</i> (62)
Study on the Relevance between Genetic Diversity of <i>Gymnocarpus przewalskii</i> Populations and Geographic Climatic Factors	XU Zhen-peng, WAN Tao, CAI Ping, <i>et al</i> (70)
Characteristics and Interaction of Soil Nematodes and Microbial Communities in <i>Stipa Grandis</i> Grassland	ZHANG Ai-lin, ZHANG Jian-ning, HONG Jie, <i>et al</i> (77)
A Study on the Characteristics of Soil Seed Bank of Grassland on Roadsides of Qinghai-Tibet Plateau-Take the Highway of G214 for Example	CHEN Xue-ping, YANG Yan-gang, SHANG Zhan-huan, <i>et al</i> (85)
Effects of Stubble Height on Characteristics of <i>Stipa grandis</i> Populations in Typical Steppe	WANG Xi, JIA Li-xin, QIAO Ji-rong, <i>et al</i> (92)
Evaluation of the Production Performance of 5 Tall Fescue cultivars in Hilly Area of Central Sichuan Basin	ZHANG Fan, LI Xiao-mei, SONG Xin, <i>et al</i> (99)
Effects of Different Combination of Water and Fertilizer on Alfalfa Quality	BI Shu-ji, CAO Jing, LI Yue, <i>et al</i> (105)
Effects of Planting Density on Leaf C, N, P Ecological Stoichiometry in Different Growth Stages of Alfalfa	LIU Wen-lan, SHI Shang-li, TIAN Fu-ping, <i>et al</i> (114)
Correlation Analysis and Synthesize Evaluation of Yield and Quality Introduced Oat Varieties in the Semi-Arid of Northwest	NAN Ming, ZHAO Gui-qin, LI Jing, <i>et al</i> (125)
Effect of Burrowing Activity of <i>Myospalax baileyi</i> on Plant Community Structure in Different Grazing Systems	WANG Yu-qin, BAO Gen-sheng, WANG Hong-sheng, <i>et al</i> (134)
The Impacts of Rooting Proportions of Ramets of <i>Zoysia japonica</i> on Its Clonal Growth Under Two Nutrition Levels	YUN Xiao-tao, ZHOU Li-xin, LI De-zhi, <i>et al</i> (142)
Ranking and Parameters for Rodents Damaged Rangelands and Adaptive Management in Northwest Plateau of Sichuan Province	SUN Fei-da, GOU Wen-long, ZHU Can, <i>et al</i> (152)
Soil Quality Assessment Along Re-vegetation on Sloping-Land with Purple Soils in Hengyang of Hunan Province, South-central China	CHEN Jing, YANG Ning (160)
Preliminary Study on the Accumulation and Differentiation of Mineral Elements in Alpine Cultivated Grassland of Qinghai-Tibet Plateau under Different Light Conditions and Temperatures	LI Tian-cai, CAO Guang-min, LIN Li, <i>et al</i> (168)
Influence of Interplant Herbage on Soil Moisture and Apple Tree Growth in Dry Plateau of Eastern Gansu	BAI Gang-shuan, ZHENG Suo-lin, ZOU Chao-yu, <i>et al</i> (173)
Grasshopper Control by Combined Application of <i>Paranosema locustae</i> and an Insect Growth Regulator in Rangelands	XING Xue-jun (184)
Study on Nutrient Component and Feeding Value of Several Unconventional Roughages	WANG Hao-wei, HOU Zhen-ping, YANG Huan-sheng, <i>et al</i> (189)
Physiological Response to Drought Stresses and Drought Resistances Evaluation of Different Old World Bluestem Populations	ZHONG Hua, DONG Jie, GUO Jin-mei, <i>et al</i> (195)
Effect of Forage Grass on Several Kinds of Cationic ions in Solonchaks	ZHANG Tao, ZHANG Qian, TIAN Xiu-ping, <i>et al</i> (203)
Effects of Different Forms and Proportions of Nitrogen on Plant Height and Biomass in Alpine Meadow	LU Guang-xin, LI Zong-ren, LI Xi-lai, <i>et al</i> (210)
Effect of ⁶⁰ Co-γ Ray Radiation on Seedling Growth and Activity of Two Antioxidant Enzymes in Alfalfa Seedlings	LI hong, LI Bo, YANG Zhang, <i>et al</i> (216)
Effects of Cutting Treatments in Late Autumn on Antioxidant Enzyme Activity and Proline Content in Crown of Sandy Land Alfalfa in Winter	ZHU Ai-min, ZHANG Yu-xia, WANG Xian-guo, <i>et al</i> (222)
Influence of GA ₃ on Breaking Seed Dormancy and Germination Physiological Characteristics of <i>Aconitum gymnantrum</i>	MA Wen-jing, ZHAO Ying, WEI Xiao-hong, <i>et al</i> (231)
Design and Verification of Measurement Equipment for Analysis of Silage Aerobic Stability	ZHENG Yi, TANG Hong-yu, LI Tian-yu, <i>et al</i> (238)
Soil Moisture Simulation and Error Analysis in Arid Area of China Based on CoLM Model	JIANG Hong-nan, XU Jian-hui (244)
Quantitative Analysis of Herbage Nutritional Components on Natural Pasture by Near Infrared Diffuse Reflectance Spectroscopy	LIU Zhe, WANG Yu-qin, XUE Shu-yuan, <i>et al</i> (249)
Comparison of Silage Characteristics among Summer-planting Silage Corn Varieties in Hilly Area of Central Sichuan Basin	TIAN Xiao-qin, LI Zhuo, LIU Yong-hong (256)
Effect of Cultivars and Harvest Stages on the Maize Yield and Silage Quality	WANG Yun-tao, YANG Zhi-min, LIU Jian-cheng, <i>et al</i> (261)
Introduction test of Four Perennial Grass Species	LI Lian-xiang (264)

刊号: ISSN 1007-0435
CN 11-3362/S

定价: 25.00 元/册
150.00 元/年

万方数据

ISSN 1007-0435



0 1 >

9 771007 043185