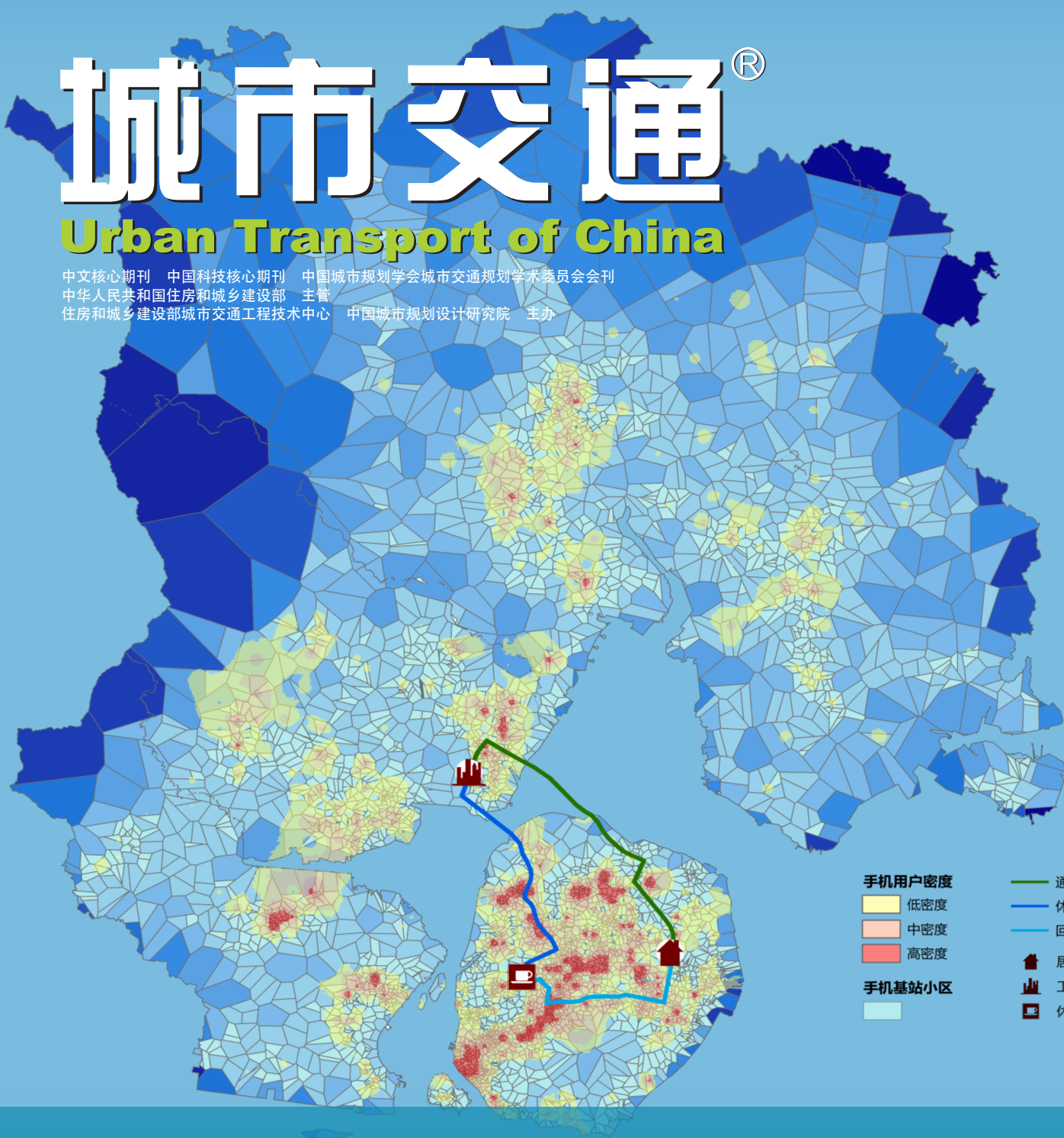


# 城市交通<sup>®</sup>

## Urban Transport of China

中文核心期刊 中国科技核心期刊 中国城市规划学会城市交通规划学术委员会会刊  
 中华人民共和国住房和城乡建设部 主管  
 住房和城乡建设部城市交通工程技术中心 中国城市规划设计研究院 主办



- |               |      |
|---------------|------|
| <b>手机用户密度</b> | 通勤   |
| 低密度           | 休闲   |
| 中密度           | 回家   |
| 高密度           | 居住地  |
| <b>手机基站小区</b> | 工作地  |
|               | 休闲场所 |

### 大数据与城市交通专题

大数据时代城市交通学发展的机遇  
 高速铁路对都市区一体化的影响——以伦敦、马德里和巴黎为例

# 1

# 2016

ISSN 1672-5328



9 771672 532168



CN 11-5141/U  
 邮发代号 80-175  
 国内定价 25.00元

# 目次

期刊基本参数: CN 11-5141/U \* 2003 \* b \* A4 \* 100 \* zh \* P \* ¥25.00 \* 4000 \* 12 \* 2016-01

## 本刊特稿

- 01 大数据时代城市交通学发展的机遇  
汪光焘

## 大数据与城市交通专题

- 08 专题导读  
杨东援
- 09 基于手机传感器数据的出行特征提取方法  
杨飞 姚振兴
- 15 基于手机信令数据的上海市域职住空间分析  
张天然
- 24 大数据环境下上海市综合交通特征分析  
陈欢 薛美根
- 30 基于手机话单数据的通勤出行特征分析  
——以深圳市为例  
杨超 张玉梁 张帆
- 37 基于手机数据的城市交通大区OD分布估计  
——以旧金山市为例  
龚航 孙黎 王璞
- 43 基于数据融合的公交客流规模测算方法  
李林波 姜屿 王婧 吴兵
- 51 基于IC卡数据的公交客流特征分析  
——以北京市为例  
陈锋 刘剑锋

- 59 基于浮动车数据挖掘的出租汽车运营特征研究  
庄立坚 宋家骅 段仲渊 丘建栋

## 交通工程

- 65 侵犯性驾驶行为对道路交叉口通行能力的影响  
秦华 刘博乐 黄任文
- 72 VISSIM 仿真在单向交通组织方案比选与评价中的应用  
卓亚娟 王元庆

## 他山之石

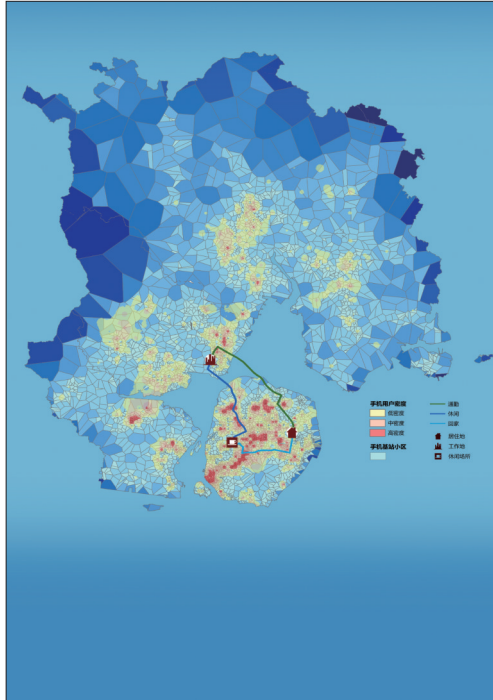
- 80 高速铁路对都市区一体化的影响  
——以伦敦、马德里和巴黎为例  
Inmaculada Mohino, Anastasia Loukaitou-Sideris, José Maria Urería 著  
张铮 译

## 信息集锦

- 97 交通资讯  
102 读书

## 彩页索引

- 《国际规划研究》征文启事(彩页1)  
中国城市无车日活动优秀实践案例  
(彩页2~8,封三)



**Cover Picture:**  
Value of Big Data in Urban Transportation

**Honorary Editor in chief** Zhou Ganzhi  
**Editor in chief** Wang Jingxia  
**Associate Editor** Zhao Jie Ma Lin Yin Guangtao  
**Advisory Editorial Board**  
 Qian Yongshen Liu Guisheng Li Xiaojiang Yang Dongyuan  
 Yang Peikun Fan Lixiu Zhou Wei Duan Liren  
 Shi Zhongheng Xia Qing  
**Editorial Board**  
 Ma Xiaoyi Wang Changjun Wang Hao Wang Wei  
 Wang Xiaoming Wang Xiaojing Wang Dianhai Kong Lingbin  
 Zhu Shunying Liu Qian Liu Binglian Guan Hongzhi  
 Li Fengjun Li Wei Li Keping Yang Xiaoguang  
 Yang Tao Zhang Xiaochun Lu Huapu Lu Ximing  
 Chen Xiaohong Chen Bizhuang Chen Jun Shao Chunfu  
 Lin Wei Lin Qun Yi Hanwen Zhao Zhongshu  
 Rong Jian Yu Chunjun He Chongming Qin Guodong  
 Qian Linbo Xu Kangming Guo Xiaobei Guo Jifu  
 Gai Chunying Han Yin Pei Yulong Xiong Wen  
 Pan Haixiao Dai Jifeng  
**Executive editor in chief** Zhang Yu  
**English language editor** Sun Xiaoduan Li Xin

**Administered by**  
Ministry of Housing and Urban-Rural Development of the People's Republic of China (MOHURD)

**Sponsored by**  
Urban Transportation Center (UTC) of MOHURD  
China Academy of Urban Planning and Design (CAUPD)

**Published by**  
Press of Urban Transport of China at 9 Sanlihe Rd., Beijing 100037, P.R. China  
Tel: 8610 5832 3221  
Fax: 8610 5832 3220  
E-mail: zyutc@263.net or csjt@vip.163.com  
http://www.chinautc.com  
http://csjt.cbpt.cnki.net (Submission)

**Distributed by**  
China International Book Trading Corporation  
P.O.Box: 399, Beijing 100044, P.R.China  
Tel: 8610 6841 3063  
Fax: 8610 6842 0340  
ISSN 1672-5328

### Feature

- 01 Opportunity for Urban Transportation Development in the Era of Big Data**

Wang Guangtao

### Special Topics: Big Data and Urban Transportation

- 08 An Introduction to Special Topics**

Yang Dongyuan

- 09 Cellular-based Data Extracting Method for Travel Characteristics**

Yang Fei, Yao Zhenxing

- 15 Job-Housing Spatial Distribution Analysis in Shanghai Metropolitan Area Based on Cellular Signaling Data**

Zhang Tianran

- 24 Using Big Data to Explore Transportation System Characteristics in Shanghai**

Chen Huan, Xue Meigen

- 30 Commuting Characteristics Analysis Based on Mobile Phone Calling Records: A Case Study in Shenzhen**

Yang Chao, Zhang Yuliang, Zhang Fan

- 37 Using Mobile Phone Data to Estimate Trip Distribution of Urban Mega Traffic Analysis Zones: A Case Study in San Francisco**

Gong Hang, Sun Li, Wang Pu

- 43 Passenger Volume Estimation Based on Data Fusion**

Li Linbo, Jiang Yu, Wang Jing, Wu Bing

- 51 Characteristics of Bus Passenger Flow Based on IC Card Data: A Case Study in Beijing**

Chen Feng, Liu Jianfeng

- 59 A Floating Car Data Mining-based Taxi Operation Characteristics**

Zhuang Lijian, Song Jiahua, Duan Zhongyuan, Qiu Jiandong

### Traffic Engineering

- 65 Impact of Aggressive Driving on Intersection Capacity**

Qin Hua, Liu Bole, Huang Renwen

- 72 Application of VISSIM Simulation on Evaluation of One-way Traffic Plans**

Zhuo Yajuan, Wang Yuanqing

### Overseas Experience

- 80 Impacts of High-Speed Rail on Metropolitan Integration: An Examination of London, Madrid and Paris**

Written by Inmaculada Mohino, Anastasia Loukaitou-Sideris, José Maria Urería, Translated by Zhang Zheng