



Volume 19 Number 6
June 2022

ISSN 1672-7029
CN 43-1423/U

铁道科学与工程学报

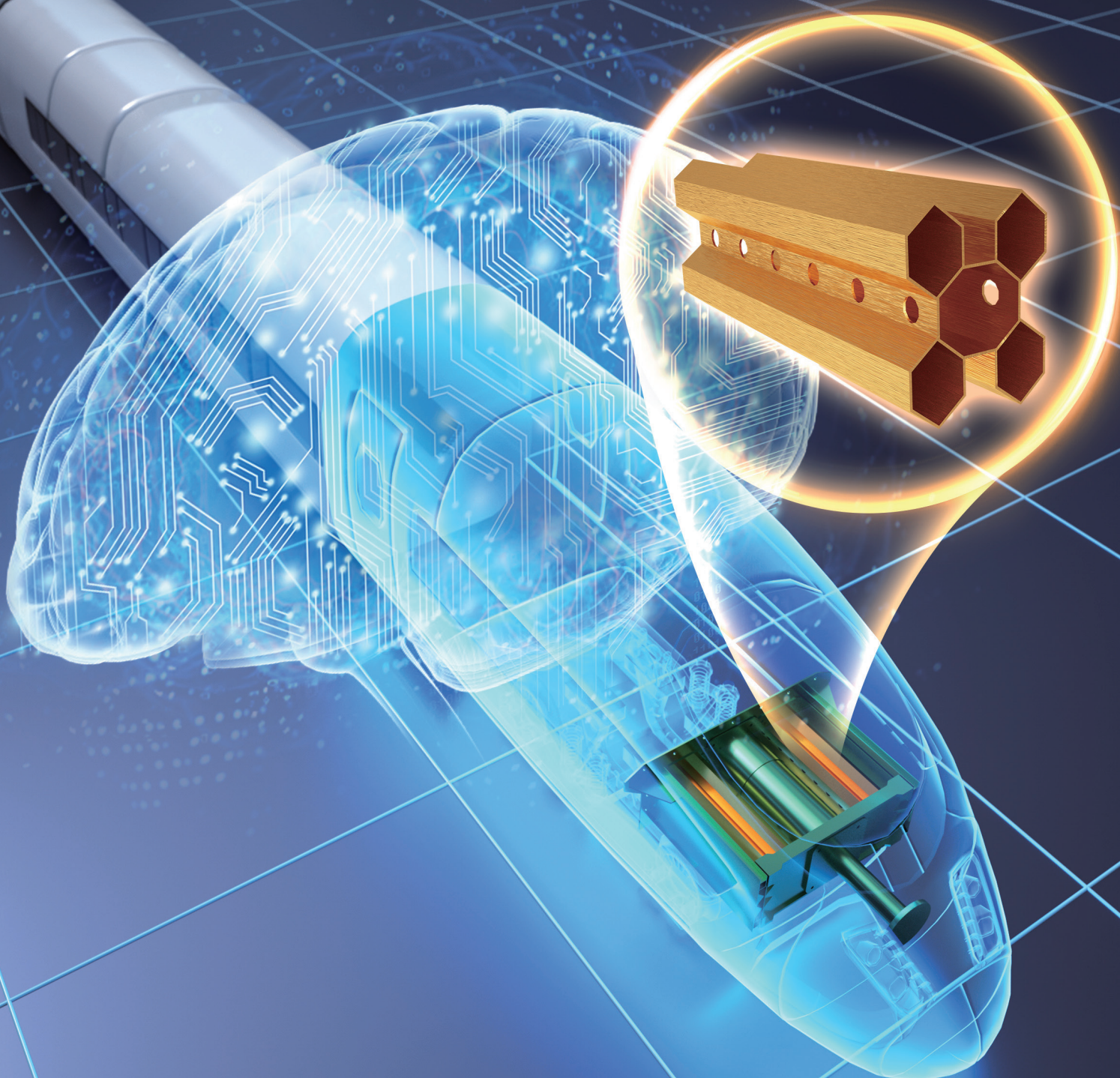
Journal of Railway Science and Engineering

铁道科学与工程学报

Volume 19 Number 6

Pages 1475-1800

June 2022



中南大学 主办
中国铁道学会

目次

高速铁路技术

- 结构不确定性对高速铁路矮塔斜拉桥概率地震需求的影响 谢明志, 杨永清, 庄重, 黄胜前(1475)
- 高速铁路双层钢板-混凝土结合梁桥车桥动力分析 户东阳(1485)
- 高速铁路桥梁预制节段拼装桥墩抗震性能分析 梁岩, 李庆贺, 罗小勇, 曹阳, 张浩(1492)
- 高速列车吸能结构开孔设计及结构优化 陈劼昊, 梁习锋, 许平, 车全伟(1502)
- 基于PSO-BP-PID单点混合悬浮球控制算法研究 彭月, 苏芷玄, 杨杰, 姜桥(1511)

智慧交通与物流

- 基于连续变量量子通信的地铁量子调度网络研究 傅思良, 李凯迪, 于天剑, 伍珣(1521)
- 基于生成对抗网络的地铁OD需求短时预测 申慧涛, 郑亮, 李树凯, 王璞(1530)
- 基于改进TAM的无人驾驶出租车接受度研究 孙龄波, 唐秋生, 游宇(1540)
- 区域应急物流中心空间布局规划研究 尹传忠, 刘咪, 武中凯, 陶学宗(1550)

轨道与基础

- 基于级联卷积神经网络的轨枕裂纹识别方法研究 汪晨曦, 李立明, 柴晓冬, 郑树彬, 童千倩(1559)
- 基于万有引力搜索算法优化支持向量机的软土路基参数反演 唐仁华, 罗文兴(1568)
- 公路下穿既有线新建泡沫轻质土路涵过渡段动力响应特性分析 刘彬彬, 曾志姣, 杨晨, 卢铭宇, 黄俊杰(1577)
- 黄土地区桥梁灌注桩桩端后注浆优化室内模型试验研究 熊彩凤, 徐甫, 冯泓鸣, 周志军(1585)

养护条件对纤维水泥改良风积沙强度及微观结构影响 阮波,袁忠正,张佳森,郑世龙,张向京,聂如松(1594)
增量加卸荷作用下砂岩破坏与声发射特征研究 王俊,于洋,丁佳玮,刁心宏(1605)
贯通与半贯通红砂岩试样圆孔胀裂特征研究 吴睿,范祥,曹校勇,邓志颖(1616)
沥青路面振动碾压施工的数值仿真与工艺参数分析 周刚,但汉成,山宏宇,杨冬,郑仕跃(1626)

桥梁隧道与结构

基于迁移学习的桥梁表观病害检测技术研究 王桂平,陈旺桥,杨建喜,唐于凌,吴波(1638)
桩底位置对含可液化土层桩承桥台地震反应的影响分析 魏红卫,肖长红,吴忠诚(1647)
基于响应面法的桥梁节段参数模型修正 许世展,李杨,冯冠杰,张海龙(1658)
车撞混凝土桥墩精细化建模方法 刘莉萍,刘万锋,郭建博,杜婷,邓锬(1666)
变截面波形钢腹板-UHPC箱梁剪力滞效应试验与理论研究 李立峰,李谋,叶萌,周聪(1675)
气候变暖条件下寒区隧道可靠性分析 辛成平,贾剑青,贾超,张帮鑫(1685)
含空洞地层隧道动力响应解析解 臧万军,贾晨浩,王峥峥(1696)
粉质黏土中大直径泥水盾构隧道管片上浮及错台现场测试分析
..... 李明宇,余刘成,陈健,靳军伟,历朋林,李春林,田应飞(1705)
车辆动荷载作用下黄土地区浅埋综合管廊动力响应试验研究 ... 段旭,刘武超,邹愈,胡兆江,董琪,叶万军(1716)
材料多等级双向演化结构优化算法 张鹤志,黄焱森,李永贵,尹斌(1726)

智能制造与装备

一种考虑系统不确定性估计的重载列车最优黏着控制 付雅婷,朱虹燕,杨辉(1734)
轮轨接触几何非线性对车辆动力学性能的影响 张海,冉祥瑞,蔡家祺,林凤涛,王秀刚(1743)
基于改进 HHO 算法的城轨列车关键部件可靠性研究
..... 周念玟,贺德强,苗剑,陈彦君,靳震震,刘力琼,徐伟倡(1753)
铁路货车铸件 DR 图像的疏松缺陷快速检测 李小利,曾理(1763)
山城岩质地层条件下复合式 TBM 刀盘边缘滚刀安装倾角研究 ... 熊卫士,张康健,王曙光,张志强,汪岳健(1774)
电力机车牵引变流器接地检测电路优化 姜宋阳,任宝珠,周鹏,李韵楠(1786)
阵列式消声器性能曲线在地铁环控系统中的应用 胡自林,方庆川(1794)

责任编辑:涂 鹏 英文编审:肖源杰

期刊基本参数: CN43-1423/U*2004*m*A4*326*zh*P*¥50.00*1500*34*2022-06

CONTENTS

High-speed Railway Technology

- Influence of structural uncertainty on probabilistic seismic demand of high-speed railway extradosed cable-stayed bridge
.....XIE Mingzhi, YANG Yongqing, ZHUANG Zhong, HUANG Shengqian(1475)
- Dynamic analysis of the vehicle-bridge system of double-deck steel-plate concrete composite beam bridge for high-speed railway
.....HU Dongyang(1485)
- Seismic resistance capacity of applying PSBC in high-speed railway bridge
.....LIANG Yan, LI Qinghe, LUO Xiaoyong, CAO Yang, ZHANG Hao(1492)
- Windowed design and structure optimization of energy absorbing structure of high-speed train
.....CHEN Jiehao, LIANG Xifeng, XU Ping, CHE Quanwei(1502)
- On hybrid single-point magnetic levitation ball control algorithm based on BP-PID
.....PENG Yue, SU Zhixuan, YANG Jie, JIANG Qiao(1511)

Intelligent Transportation and Logistics

- Metro dispatching network using continuous-variable quantum communication ... FU Siliang, LI Kaidi, YU Tianjian, WU Xun(1521)
- Short-term urban metro OD demand prediction with a Generative Adversarial Network
.....SHEN Huitao, ZHENG Liang, LI Shukai, WANG Pu(1530)
- Research on the acceptance of driverless taxi based on improved TAMSUN Lingbo, TANG Qiusheng, YOU Yu(1540)
- On spatial layout planning of regional emergency logistics center ... YIN Chuanzhong, LIU Mi, WU Zhongkai, TAO Xuezhong(1550)

Track and Foundation

- On crack identification method of sleepers based on cascade convolution neural network
.....WANG Chenxi, LI Liming, CHAI Xiaodong, ZHENG Shubin, TONG Qianqian(1559)
- Parameter inversion of soft soil subgrade based on support vector machine optimized by gravitational search algorithm
.....TANG Renhua, LUO Wenxing(1568)
- Analysis of dynamic response characteristics of road subgrade-culvert transition section newly constructed with foamed lightweight soil under-crossing existing railway line LIU Binbin, ZENG Zhijiao, YANG Chen,
LU Mingyu, HUANG Junjie(1577)
- Laboratory model test study on optimization of post grouting at the end of bridge cast-in-place pile in loess area
.....XIONG Caifeng, XU Fu, FENG Hongming, ZHOU Zhijun(1585)
- Effect of curing conditions on the unconfined compressive strength and microstructure of cemented aeolian sand reinforced with polypropylene fiber RUAN Bo, YUAN Zhongzheng, ZHANG Jiasen, ZHENG Shilong,
ZHANG Xiangjing, NIE Rusong(1594)

- Study on failure and acoustic emission characteristics of sandstone under incremental loading and unloading
WANG Jun, YU Yang, DING Jiawei, DIAO Xinhong(1605)
- Study on dilatation characteristics of red sandstone with perforated and semi-perforated round hole
WU Rui, FAN Xiang, CAO Xiaoyong, DENG Zhiying(1616)
- Numerical simulation and parametric analysis of vibratory roller compaction of asphalt pavement
ZHOU Gang, DAN Hancheng, SHAN Hongyu, YANG Dong, ZHENG Shiyue(1626)

Bridge,Tunnel and Structure

- A bridge surface distress detection technology based on transfer learning
WANG Guiping, CHEN Wangqiao, YANG Jianxi, TANG Yuling, WU Bo(1638)
- Effect of pile bottom position on seismic response of piled abutment with liquefiable soil layer
WEI Hongwei, XIAO Changhong, WU Zhongcheng(1647)
- Model updating of bridge segment parameter based on response surface method
XU Shizhan, LI Yang, FENG Guanjie, ZHANG Hailong(1658)
- Refined modeling method for impact resistance research of bridge piers
LIU Liping, LIU Wanfeng, GUO Jianbo, DU Ting, DENG E(1666)
- Experiment and theoretical research on shear lag effect of variable section corrugated box girder with steel web and UHPC
LI Lifeng, LI Mou, YE Meng, ZHOU Cong(1675)
- Reliability of tunnels in cold regions subject to climate warming··· XIN Chengping, JIA Jianqing, JIA Chao, ZHANG Bangxin(1685)
- Analytic solution of dynamic response of tunneling with cavitation ······ ZANG Wanjun, JIA Chenhao, WANG Zhengzheng(1696)
- In situ test analysis of segment uplift and dislocation of large-diameter slurry shield tunnel in silty clay
LI Mingyu, YU Liucheng, CHEN Jian, JIN Junwei, LI Penglin, LI Chunlin, TIAN Yingfei(1705)
- Experimental study on dynamic responses of shallow buried utility tunnel under dynamic vehicular load
DUAN Xu, LIU Wuchao, ZOU Yu, HU Zhaojiang, DONG Qi, YE Wanjun(1716)
- Bidirectional evolutionary structural optimization algorithm for multi-grade materials
ZHANG Huzhi, HUANG Yaosen, LI Yonggui, YIN Bin(1726)

Intelligent Manufacturing and Equipment

- An optimal adhesion control of heavy haul train considering system uncertainty estimation
FU Yating, ZHU Hongyan, YANG Hui(1734)
- Influence of nonlinear geometry parameters of wheel-rail contact on dynamic vehicle performance
ZHANG Hai, RAN Xiangrui, CAI Jiaqi, LIN Fengtao, WANG Xiugang(1743)
- Reliability analysis of key components of urban rail train based on improved HHO algorithm
ZHOU Nianwen, HE Deqiang, MIAO Jian, CHEN Yanjun, JIN Zhenzhen, LIU Liqiong, XU Weichang(1753)
- Rapid detection of porosity defect in DR image of railway freight car casting······LI Xiaoli, ZENG Li(1763)
- Research on installation inclination of gage cutter of the compound TBM cutterhead based on Chongqing rock formation
XIONG Weishi, ZHANG Kangjian, WANG Shuguang, ZHANG Zhiqiang, WANG Yuejian(1774)
- Optimization of grounding detection circuit for traction converter of electric locomotive
JIANG Songyang, REN Baozhu, ZHOU Peng, LI Yunnan(1786)
- The application of array silencer performance curve in subway tunnel ventilation system······HU Zilin, FANG Qingchuan(1794)