



地质与勘探

2

郭深若题

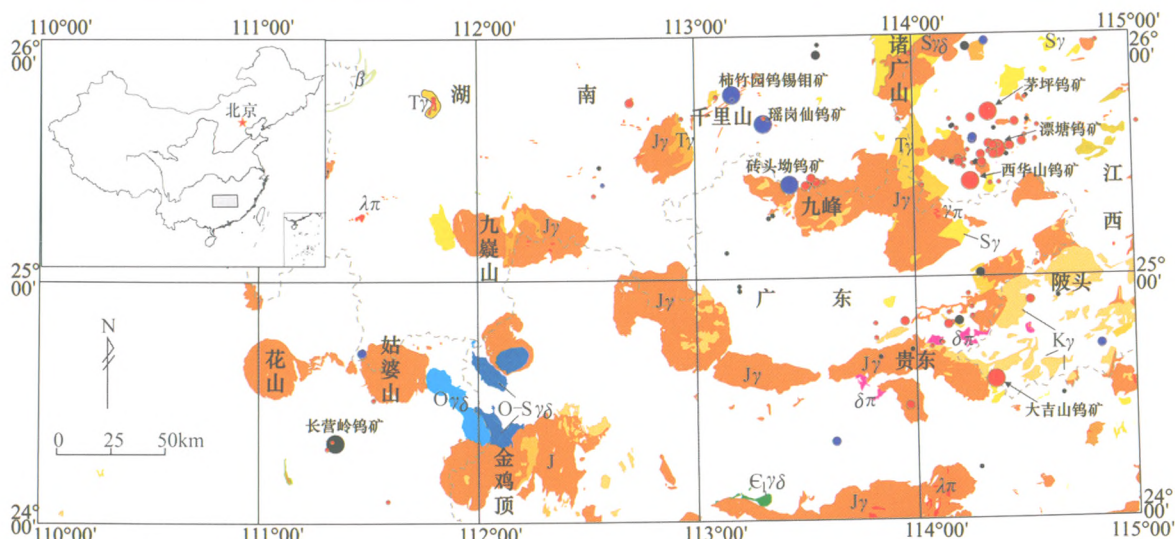
2015

GEOLOGY AND EXPLORATION

第51卷 总第458期

Since 1957

Vol.51 No.2 Sum458



Kγ	白垩纪花岗岩 Cretaceous granite	Kγδ	白垩纪花岗闪长岩 Cretaceous granodiorite	Jγ	侏罗纪花岗岩 Jurassic granite	Tγ	三叠纪花岗岩 Triassic granite
Tγδ	三叠纪花岗闪长岩 Triassic granodiorite	Sγ	志留纪花岗岩 Silurian granite	Sγδ	志留纪花岗闪长岩 Silurian granodiorite	εγδ	寒武纪花岗闪长岩 Cambrian granodiorite
Oγδ	奥陶纪花岗闪长岩 Ordovician granodiorite	O-Sγδ	奥陶-志留纪花岗闪长岩 Ordovician-Silurian granodiorite	γπ	花岗斑岩 Granite porphyry	λπ	石英斑岩 Quartz porphyry
δπ	闪长玢岩 Dioritic porphyrite	β	玄武岩 Basalt	●●●	超大型大型、中型、小型高温热液型钨矿 Super-large, large, middle and small high-temperature hydrothermal tungsten deposits	●●●	超大型大型、中型、小型其他类型钨矿 Super-large, large, middle and small other kinds of tungsten deposits
●●●	超大型大型、中型、小型接触交代型钨矿 Super-large, large, middle and small contact metasomatic tungsten deposits						

- 柴北缘尕秀雅平东含铜镍硫化物镁铁-超镁铁质岩体铂族元素的地球化学特征研究
Geochemical Characters of Platinum-Group Elements of the Gaxiuyapingdong Cu-Ni Sulfide-Bearing Mafic-ultramafic Intrusion in the Northern Margin of the Qaidam Basin
- 基于元素组合特征的相似性系数法圈定异常—以南岭地区为例
Delineating Anomalies using Similarity Coefficients Based on Element Assemblage Characteristics: An Example of the Nanling Area
- 北祁连浪力克铜矿镁安山质岩石年代学及地球化学特征
Geochronology and Geochemistry of Magnesian Andesites in the Langlike Copper Deposit, North Qilian Shan, China



中国冶金地质总局
中国地质学会

主办

GEOLOGY AND EXPLORATION

Vol. 51, No. 2 March, 2015

Contents

METAL ORE DEPOSITS

- Geochemical Characters of Platinum – Group Elements of the Gaxiuyapingdong Cu – Ni Sulfide – Bearing
Mafic – ultramafic Intrusion in the Northern Margin of the Qaidam Basin
..... Du Wei, Zhou Wei, Wu Xue – heng, Song Yan – fang, Wang Zi – xi(0203)
- Characteristics of Fluid Inclusions in the Chanziping Gold Deposit in Western Hunan Province and Their
Geological Implications Cao Liang, Duan Qi – fa, Peng San – guo, Zhou Yun (0212)
- Fluid Inclusions of the Macheng Sedimentary Metamorphic Iron Deposit in Eastern Hebei Province
.....
Xu Ying – xia, Zhang Long – fei, Wang Ming – ge, Liu Dian – long, Gao Xiao – min, Jia Dong – suo(0225)
- Sedimentary Characteristics of Phosphorite Deposits in the Sinian Dengying Formation of Weng’ an County,
Guizhou Province Zhang Wei, Yang Rui – dong, Ren Hai – li, Gao Jun – bo, Mao Tie(0238)
- Geological Characteristics and Occurrence Characteristics of the Chaganchulu Gold Deposit in Inner
Mongolia Zhang Pu, Yan Shi – ping, Meng Fan – hou, Niu Fei, Han Fu – wang(0246)
- Geochronology and Geochemistry of Magnesian Andesites in the Langlike Copper Deposit, North Qilian Shan,
China Guo Zhou – ping, Bai Yun, Zhao Xin – min,
Kong Hui – lei, Tan Wen – juan, Jiang Han – bing, Li Chang – an, Zhang Hai – song(0253)
- Geological and Geochemical Characteristics of the Jinlong Bauxite Deposit in Guangxi Province
..... Wang Yan, Xing Shu – wen, Zhang Yong, Ma Yu – bo, Zhang Zeng – jie, Wang Xin(0266)
- Geological Characteristics and Ore Prediction of the Bogutu Gold Deposit in West Tian Shan
..... Yao Tie, Zhou Yong,
Du Zhan – jun, Wang Yong – ping, Zhu Cheng – yang, Yan Xue – xin, Zhao Zhen – ming(0275)
- Geological Characteristics and Genesis of the Nanyangshan Sb Deposit in Lushi County, Henan Province
..... Wang Ya – wei, Meng Xian – feng, Wang Peng – fei, Feng Jian – zhi, Ding Yi (0284)
- Geochemistry and Zircon U – Pb Dating of Volcanic Rocks in Eastern Xilin Hot, Inner Mongolia and Their
Geological Implications Zhang Xue – bin,
Zhou Chang – hong, Lai Lin, Xu Cui, Tian Ying, Chen Li – zhen, Wei Min(0290)
- Comparison of Ore – Forming Fluids in the Deposits of Different Types of the Xiazhuang Uranium Ore Field
in Northern Guizhou Province
..... He De – bao, Fan Hong – hai, Meng Yan – ning, Sun Yuan – qiang(0303)

GEOCHEMISTRY

- Delineating Anomalies using Similarity Coefficients Based on Element Assemblage Characteristics: An
Example of the Nanling Area Gong Jing – jing, Li Fang – lin, Zhang Shuang, Cui Fang(0312)
- Anomaly Structure of the Porphyry Mo – Cu Deposit in the Matou Area, Anhui Province
..... Hu Zhao – xin, Ma Sheng – ming (0323)
- Characteristics and Regularities of Mass Transfer in the Kubusu Gold Deposit of Clastic – Altered Rock Type

in Qinghe County, Xinjiang Zheng Hai - ping, Zhu Li - xin, Ma Sheng - ming, Jiang Yu - qi(0332)
Weak Geochemical Anomalies and Mineralization in the Shuangkoushan Region, Northern Margin of Qaidam
..... Xu Yong - li, Xu Rong - ke,
Zheng You - ye, Lü Deng, Cai Peng - jie, Ma Chao, Liu Jia, Wang Hong - jun(0345)

GEOPHYSICS

Suppression of Power Line Interference on MT Signals Based on the Frequency Domain Wavelet Method ...
..... Cai Jian - Hua, Li Jin(0353)
One - Dimensional Adaptive Regularization Inversion of Transient Electromagnetic Sounding with a Large
Fixed Source Xu Yu - cong, Zhao Ning, Qin Ce, Wang Rui, Zhang Zhao - bin(0360)

REMOTE SENSING GEOLOGY

Application of Airborne Hyper - Spectrum Remote Sensing to Mapping of Ore - control Faults Case Study of the
Heishishan - Huanishan Fault Liu De - chang, Qiu Jun - ting, Tian Feng, Sun Yu(0366)

HYDROLOGY, ENGINEERING AND ENVIRONMENT

Two - Dimensional Numerical Simulation of Macro - mechanical Parameters for Fractured Rock Masses
..... Xie Yun - yue, Xiao Hong - tian, Yan Qianggan (0376)

EXPLORATION ABROAD

Tectonic Evolution and Gold Mineralization in the Arabian Nubian Shield (ANS), Northeastern Africa
..... Wei Hao, Xu Jiu - hua, Wang Jian - xiong, Zhang Guo - rui, Zhang Hui, Xu Qing - yang(0383)

PETROLEUM RESOURCES

Characteristics and Controlling Factors on Physical Properties of Yan 1012 Reservoirs in the Northern
Maling Oilfield of the Erdos Basin Ming Hong - xia, Sun Wei, Zhang Long - long(0395)

地质与勘探

2015年03月 第51卷 第2期

目 录

金属矿产

- 柴北缘尕秀雅平东含铜镍硫化物镁铁-超镁铁质岩体铂族元素的地球化学特征研究 杜 玮,周 伟,伍学恒,宋艳芳,王子玺(0203)
- 雪峰山铲子坪金矿床流体包裹体特征及地质意义 曹 亮,段其发,彭三国,周 云(0212)
- 冀东马城沉积变质型铁矿床流体包裹体研究 许英霞,张龙飞,王明格,刘殿龙,高孝敏,贾东锁(0225)
- 贵州瓮安震旦系灯影组磷矿沉积特征 张 伟,杨瑞东,任海利,高军波,毛 铁(0238)
- 内蒙古查干础鲁金矿地质特征及其金的产出特征 张 璞,颜世平,孟凡厚,牛 飞,韩福旺(0246)
- 北祁连浪力克铜矿镁安山质岩石年代学及地球化学特征 郭周平,白 赞,赵辛敏,孔会磊,谭文娟,姜寒冰,李长安,张海松(0253)
- 广西金龙铝土矿地质与地球化学特征研究 王 岩,邢树文,张 勇,马玉波,张增杰,王 鑫(0266)
- 西天山博故图金矿床地质特征和找矿预测 姚 铁,周 勇,杜展军,王永平,朱成阳,阎学欣,赵振明(0275)
- 河南卢氏南阳山锑矿地质特征与矿床成因分析 王亚伟,孟宪锋,王鹏飞,冯建之,丁 毅(0284)
- 锡林浩特东部早白垩世白音高老组岩石地球化学特征、LA-MC-ICP-MS 锆石 U-Pb 年龄及地质意义 张学斌,周长红,来 林,徐 翠,田 颖,陈丽贞,魏 民(0290)
- 粤北下庄铀矿田不同类型矿床成矿流体对比研究 何德宝,范洪海,孟艳宁,孙远强(0303)

地球化学

- 基于元素组合特征的相似性系数法圈定异常-以南岭地区为例 龚晶晶,李方林,张 爽,崔 放(0312)
- 安徽马头地区斑岩型钼铜矿异常结构研究 胡兆鑫,马生明(0323)
- 新疆青河县库布苏破碎蚀变岩型金矿元素迁移特征与规律研究 郑海平,朱立新,马生明,姜雨奇(0332)
- 柴北缘双口山荒漠戈壁景观区 1:5 万“HS-9-4”弱小化探异常的矿化发现及意义 徐永利,许荣科,郑有业,吕 登,蔡鹏捷,马 超,刘 嘉,王红军(0345)

地球物理

- 基于频率域小波去噪的大地电磁信号工频干扰处理 蔡剑华,李 晋(0353)
- 大定源瞬变电磁一维自适应正则化反演 徐玉聪,赵 宁,秦 策,王 锐,张召彬(0360)

遥感地质

- 区域控矿断裂带的航空高光谱遥感技术研究-以黑石山-花牛山深大断裂带为例 刘德长,邱骏挺,田 丰,孙 雨(0366)

水文·工程·环境

- 裂隙岩体宏观力学参数的二维数值模拟 谢云跃,肖洪天,闫强刚(0376)

境外矿产

- 非洲东北部阿拉伯-努比亚地盾(ANS)构造演化与金成矿作用 魏 浩,徐九华,王建雄,张国瑞,张 辉,徐清扬(0383)

油气资源

- 马岭油田北三区延 1012 储层特征及其控制因素 明红霞,孙 卫,张龙龙(0395)

《地质与勘探》第五届编委会

The Fifth Editorial Committee of GEOLOGY AND EXPLORATION

特邀编委 (按字母表顺序) Members of Specially Invited Editorial Committee (in alphabetical order):

陈毓川 CHEN Yuchuan	何继善 HE Jishan	刘光鼎 LIU Guangding	刘广志 LIU Guangzhi
莫宣学 MO Xuanxue	孙 枢 SUN Shu	王德滋 WANG Dezi	阎凤增 YAN Fengzeng
叶天竺 YE Tianzhu	殷鸿福 YIN Hongfu	翟裕生 ZHAI Yusheng	张洪涛 ZHANG Hongtao
赵鹏大 ZHAO Pengda			

主 任 Director of Editorial Committee:

闫学义 YAN Xueyi

副主任 Deputy Directors of Editorial Committee:

朱立新 ZHU Lixin	郝梓国 HAO Ziguo	琚宜太 JU Yitai	骆华宝 LUO Huabao
---------------	---------------	--------------	----------------

编 委 (按字母表顺序) Members of Editorial Committee (in alphabetical order):

A.M.Nikishen (Russia)	白万成 BAI Wancheng	CHANG Zhaoshan (Australia)	陈 汉 CHEN Han
陈建文 CHEN Jianwen	陈仁义 CHEN Renyi	邓 军 DENG Jun	高 山 GAO Shan
高献计 GAO Xianji	巩恩普 GONG Enpu	郝梓国 HAO Ziguo	侯增谦 HOU Zengqian
胡瑞忠 HU Ruizhong	华宣奎 HUA Xuankui	琚宜太 JU Yitai	李 波 LI Bo
李广雪 LI Guangxue	李建伦 LI Jianlun	李继亮 LI Jiliang	刘建明 LIU Jianming
骆华宝 LUO Huabao	马延明 MA Yanming	毛景文 MAO Jingwen	NIU Yaoling (UK)
欧阳志鸿 OUYANG Zhihong	彭齐鸣 PENG Qiming	秦克章 QIN Kezhang	邱小平 QIU Xiaoping
孙 峰 SUN Feng	孙丰月 SUN Fengyue	V.I.Starostin (Russia)	V.V.Avtonin (Russia)
王安建 WANG Anjian	王京彬 WANG Jingbin	王炯辉 WANG Jionghui	王 驹 WANG Ju
王汝成 WANG Rucheng	王瑞江 WANG Ruijiang	王小烈 WANG Xiaolie	王训练 WANG Xunlian
王 研 WANG Yan	韦星林 WEI Xinglin	吴淦国 WU Ganguo	武 胜 WU Sheng
谢连平 XIE Lianping	徐水师 XU Shuishi	徐占海 XU Zhanhai	薛迎喜 XUE Yingxi
闫学义 YAN Xueyi	杨茂华 YANG Maohua	杨志刚 YANG Zhigang	伊丕厚 YI Pihou
袁从建 YUAN Congjian	曾普胜 ZENG Pusheng	张成江 ZHANG Chengjiang	张金带 ZHANG Jindai
张立飞 ZHANG Lifei	ZHOU Meifu (Hong Kong)	朱谷昌 ZHU Guchang	朱立新 ZHU Lixin

主 管 中国钢铁工业协会

主 办 中国冶金地质总局
中国地质学会

承 办 中国冶金地质总局矿产资源研究院

编辑出版 《地质与勘探》编辑部

办公地址 北京市顺义区机场东路2号国家地理
信息科技产业园2A组团3号楼 101300

通讯地址 北京市朝阳区首都机场航食路2号
100621-2邮箱 100621

电 话 010-53296110 53296111

传 真 010-53296000

电子信箱 dzykt@vip.sina.com

网 址 www.dzykt.com

主 编 卢 进

执行主编 孙 赫

副 主 编 王 梅

编 辑 郝情情 陈伟军

英文审译 高祥林

美术编辑 王寒梅

印 刷 北京印匠彩色印刷有限公司

国内发行 北京市报刊发行局

国外发行 中国出版对外贸易公司(北京782信箱)

订 阅 全国各地邮局(邮发代号: 82-504)

发行范围 国内外公开发行

Managed by

Sponsored by

Operated by

Edited and Published by

Tel

Fax

Email

Http

Editor in Chief

Executive Editor in Chief

Associate Editor in Chief

Editors

English Consultant

Art Editor

Printed by

Distributed by

Distributed abroad by

Subscription handled by

China Iron and Steel Association

China Metallurgical Geology Bureau (CMGB)

Geological Society of China

Institute of Mineral Resources Research, CMGB

GEOLOGY AND EXPLORATION Editorial Board

Building 3, Group 2A, National Geomatics Industrial Park,

No. 2 Airport East Road, Shunyi District,

Beijing, P.R. China 101300

010-53296110 53296111

010-53296000

dzykt@vip.sina.com

www.dzykt.com

Lu Jin

Sun He

Wang Mei

Hao Qingqing Chen Weijun

Gao Xianglin

Wang Hanmei

Beijing Yinjiang Color Printing Co., Ltd

Beijing Bureau for Distribution of Newspapers and Journals

China National Publishing Industry Trading Corporation

(P.O.Box 782, Beijing, China)

Local Post offices in China(82-504)

ISSN 0495-5331

国内刊号: CN 11-2043/P 国际刊号: ISSN 0495-5331



9 770495 533000

定价: 45.00元