



■ 全国期刊方阵双百期刊 ■ 全国中文核心期刊 ■ 中国科技核心期刊

地质与勘探

5

郑深若题

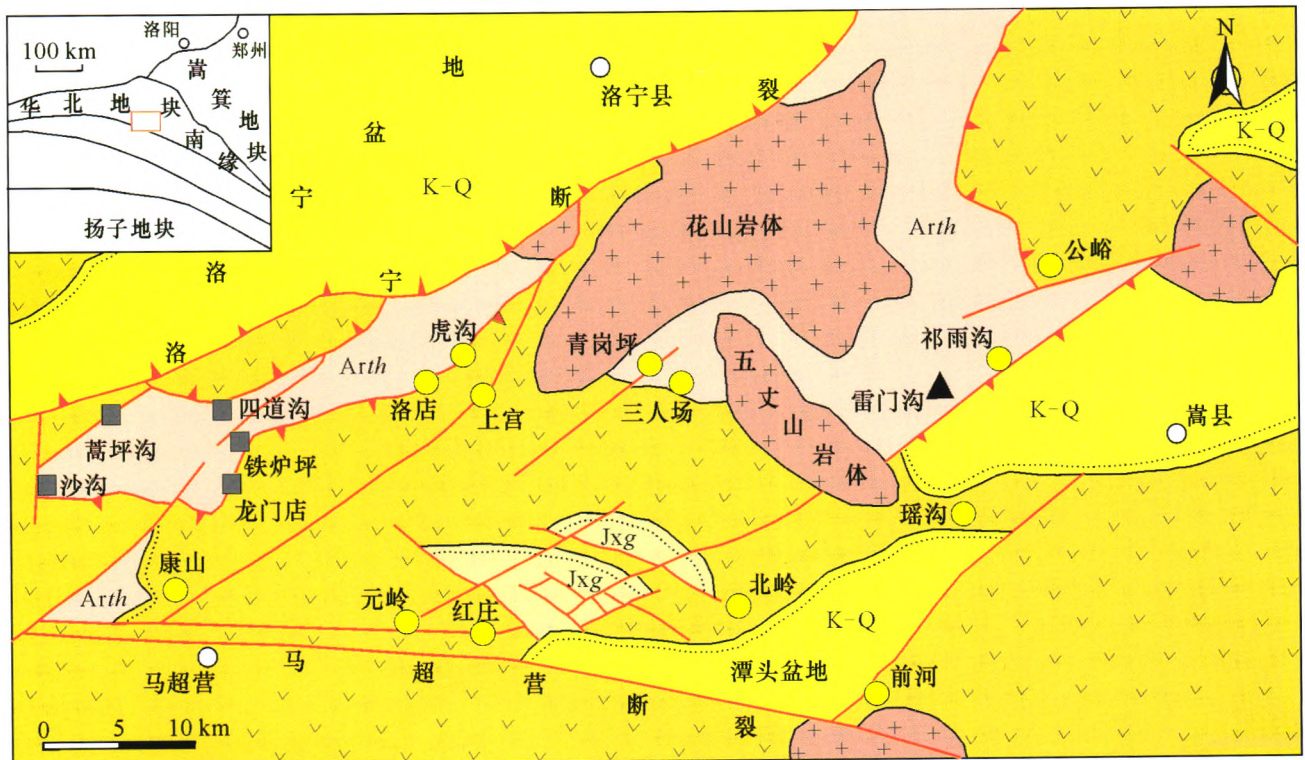
2015

第51卷 总第461期

GEOLOGY AND EXPLORATION

Since 1957

Vol.51 No.5 Sum461



K-Q	第四纪沉积物及白垩纪-新近纪沉积岩 Quaternary sediments and Cretaceous to Tertiary sedimentary rocks	Arth	太古代太华群片麻岩 Archean Taihua Group gneiss		断层 Fault		金矿床 Gold deposit
Jxg	中元古代蓟县系官道口群砂岩和白云岩 Middle Proterozoic Guandaokou Formation sandstone and dolomite		燕山期花岗岩 Yanshanian granite		不整合地质界线 Unconformity geological boundary		钼矿床 Mo deposit
	中元古代熊耳群安山岩 Middle Proterozoic Xiong'er Formation andesite		拆离断层 Detachment fault		银-铅-锌矿床 Ag-Pb-Zn deposit		

- 河南洛宁龙门店银矿成矿阶段划分及流体包裹体测温意义
Metallogenic Stages and the Homogenization Temperature of Fluid Inclusions of the Longmendian Silver Deposit in Luoning City, Henan Province
- 西天山卡特巴阿苏金矿床成矿年代学及其地质意义-来自绢云母⁴⁰Ar-³⁹Ar同位素年龄证据
Geochronology of the Katabaasu Gold Deposit in West Tian Shan and its Geological Significance: Evidence from ⁴⁰Ar-³⁹Ar Isotopic Ages of Sericite



中国冶金地质总局 主办
中国地质学会

地质与勘探

2015年09月 第51卷 第5期

目录

金属矿产

- 西天山卡特巴阿苏金矿床成矿年代学及其地质意义-来自绢云母 ^{40}Ar - ^{39}Ar 同位素年龄证据.....
..... 高永伟,张振亮,王志华,杨维忠,班建永,董福辰,谭文娟(805)
- 西藏冈底斯罗布真铅锌矿床成矿流体特征..... 欧阳海涛,孙祥,郑有业,吴松,游智敏,耿瑞瑞,王煜(816)
- 河南洛宁龙门店银矿成矿阶段划分及流体包裹体测温意义.....
..... 庞绪成,赵少攀,杨剧文,赵定生,范少军,郭跃闪,张凯涛(828)
- 内蒙古沙子沟钨钼多金属矿床辉钼矿 Re-Os 同位素定年及其地质意义..... 彭能立,奚小双,孔华,陈泽锋,王高(838)
- 新疆哈密市红石铜矿床地质特征及找矿潜力... 王宁,甘先平,方同辉,刘正桃,毛启贵,王洋,张岩,郝明,鹿志忠(849)
- 贵州五指山铅锌矿田深部找矿远景分析..... 陈国勇,王亮,范玉梅,郑伟(859)
- 腾格尔坳陷砂岩型铀矿控矿成因相特征及远景预测..... 刘波,杨建新,乔宝成,张锋(870)
- 江西相山铀矿田构造控矿规律研究..... 窦小平,时燕华,吴赞华,熊超,万双双,孙崇波(879)
- 山东归来庄地区综合信息找矿模型及靶区预测..... 朱文杰,张原庆,王玉福(888)
- 内蒙古林西县北三段银铅多金属矿床碳、氧、硫、铅同位素特征及成矿物质来源.....
..... 吕向光,梁景利,苏宏建,李保飞,刘晓煌,孙俊刚(898)
- 陕南马岭关杂岩中斜长角闪岩的矿物学特征及其对 Fe-Ti 矿化的启示.....
..... 黄杰,覃小锋,王宗起,张英利,杨文,朱安汉,宋炯(907)

地球化学

- 贵州瓮安夏安灯影组磷块岩稀土元素地球化学特征..... 丁亚龙,谢宏(923)
- 土壤元素地球化学异常对天津地区地热田异常的指示..... 王卫星,赵娜,张亚娜,曹淑萍,李攻科(932)

地球物理

- 基于重磁场特征的松辽盆地基底岩性研究..... 吴真玮,曾昭发,李静,赵雪宇,许天福(939)
- 无单元 Galerkin 法大地电磁三维正演模拟..... 李俊杰,严家斌,皇祥宇(946)
- 新疆拉伊克勒克斑岩铜矿 3D 电性结构与找矿指示..... 邵陆森,孟贵祥,邓震,张亚伟,耿兴涛(953)
- 井地联合并行电法测试模拟与应用..... 张平松,吴健生,赵永辉,许时昂(964)
- 瞬变电磁法在新疆东天山天宇铜镍矿区的应用效果..... 武军杰,杨毅,王兴春,张杰,邓晓红(970)

水文工程环境

- 深部盐岩层绳索取心钻井液技术研究与应用..... 郑文龙,乌效鸣,吴笛,肖长波,卢予北(977)
- 云南某工程建设场地岩溶分布与形成机制..... 郭纯青,李志宇,杨军,田西昭,田月明,胡君春(984)
- 隧道工程勘察阶段涌水预测的问题探讨..... 袁广祥,李建勇,黄志全,王朋媛(993)
- 复杂工况单向固结理论分析及可视化..... 袁颖,尹超,周爱红(999)

GEOLOGY AND EXPLORATION

Vol.51, No. 5 September, 2015

Contents

METAL ORE DEPOSITS

- Geochronology of the Katabaasu Gold Deposit in West Tian Shan and its Geological Significance: Evidence from ^{40}Ar - ^{39}Ar Isotopic Ages of Sericite Gao Yong-wei, Zhang Zhen-liang, Wang Zhi-hua, Yang Wei-zhong, Ban Jian-yong, Dong Fu-chen, Tan Wen-juan(805)
- Characteristics of Metallogenic Fluid in the Luobuzhen Pb-Zn Deposit in the Gangdese Belt, Southern Tibet Ouyang Hai-tao, Sun Xiang, Zheng You-ye, Wu Song, You Zhi-min, Gen Rui-rui, Wang Xuan(816)
- Metallogenic Stages and the Homogenization Temperature of Fluid Inclusions of the Longmendian Silver Deposit in Luoning City, Henan Province Pang Xu-cheng, Zhao Shao-pan, Yang Ju-wen, Zhao Ding-sheng, Fan Shao-jun, Guo Yue-shan, Zhang Kai-tao(828)
- Re-Os Isotopic Dating of Molybdenites from the Shazigou W-Mo Multi-metal Deposit, Inner Mongolia and its Geological Implications Peng Neng-Li, Xi Xiao-Shuang, Kong Hua, Chen Ze-feng, Wang Gao(838)
- Geological Characteristics and Ore Prospecting Potential of Hongshi Copper Deposit in Hami of Xinjiang Wang Ning, Gan Xian-ping, Fang Tong-hui, Liu Zheng-tao, Mao Qi-gui, Wang Yang, Zhang Yan, Hao Ming, Lu Zhi-zhong(849)
- Ore-Search Prospect of the Deep Subsurface in the Wuzhishan Pb-Zn Ore-field, Guizhou Province Chen Guo-yong, Wang Liang, Fan Yu-mei, Zheng Wei(859)
- Characteristics of Ore-Controlling Genetic Facies and Prospect Prediction of Sandstone-Type Uranium Deposits in the Tengger Depression, Inner Mongolia Liu Bo, Yang Jian-xin, Qiao Bao-cheng, Zhang Feng(870)
- Rules of Structural Ore-Controlling of the Xiangshan Uranium Orefield in Jiangxi Province Dou xiao-ping, Shi Yan-hua, Wu Zan-hua, Xiong Chao, Wan Shuang-shuang, Sun Chong-bo(879)
- Comprehensive Information Prospecting Model and Target Prediction of the Guilaizhuang Area, Shandong Province Zhu Wen-jie, Zhang Yuan-qing, Wang Yu-fu(888)
- Characteristics of C, O, S and Pb Isotopes and Sources of the Ore Metals of the Beisanduan Ag-Pb Polymetallic Deposit in Linxi County, Inner Mongolia Lü Xiang-guang, Liang Jing-li, Su Hong-jian, Li Bao-fei, Liu Xiao-huang, Sun Jun-gang(898)
- Mineralogical Characteristics of the Plagioclase Amphibolites of the Malinguan Complex in Southern Shaanxi Province and their Implications for Fe-Ti Mineralization Huang Jie, Qin Xiao-feng, Wang Zong-qi, Zhang Ying-li, Yang Wen, Zhu An-han, Song Jiong(907)

GEOCHEMISTRY

- REE Geochemistry of the Dengying Formation Phosphorites in the Xia'an Area, Wong'an County, Guizhou Province Ding Ya-long, Xie Hong(923)
- Geochemical Anomalies of Soil Elements and their Implications for Geothermal Fields in the Tianjin Area Wang Wei-xing, Zhao Na, Zhang Ya-na, Cao Shu-ping, Li Gong-ke(932)

GEOPHYSICS

- Distribution of Basement Lithology in the Songliao Basin Derived from Gravity and Magnetic Anomalies ...
..... Wu Zhen-wei, Zeng Zhao-fa, Li Jing, Zhao Xue-yu, Xu Tian-fu(939)
- Three-Dimensional Forward Modeling of Magnetotellurics Using the Element-Free Galerkin Method
..... Li Jun-jie, Yan Jia-bin, Huang Xiang-yu(946)
- 3D Electrical Structure and Prospecting Indicators of the Porphyry Copper Deposit in Layikeleke, Xinjiang
..... Shao Lu-sen, Meng Gui-xiang, Deng Zhen, Zhang Ya-wei, Geng Xing-tao (953)
- Testing Simulation and Application of the Borehole-Ground Joint Parallel Electrical Method
..... Zhang Ping-song, Wu Jian-sheng, Zhao Yong-hui, Xu Shi-ang(964)
- Application of TEM in the Tianyu Cu-Ni Deposit in East Tian Shan, Xinjiang
..... Wu Jun-jie, Yang Yi, Wang Xing-chun, Zhang Jie, Deng Xiao-hong(970)

HYDROLOGY, ENGINEERING AND ENVIRONMENT

- Drilling Fluid Technology Suitable for Core Drilling in Deep Salt Beds
..... Zheng Wen-long, Wu Xiao-ming, Wu Di, Xiao Chang-bo, Lu Yu-bei(977)
- Distribution and Formation Mechanism of Karst on a Project Site in Yunnan Province
..... Guo Chun-qing, Li Zhi-yu, Yang Jun, Tian Xi-zhao, Tian Yue-ming, Hu Jun-chun (984)
- On Prediction of Water Inflow into Tunnels During Engineering Surveys
..... Yuan Guang-xiang, Li Jian-yong, Huang Zhi-quan, Wang Peng-jiao(993)
- Analysis of Complex Conditions of One-Dimensional Consolidation Theory and Visualization
..... Yuan Ying, Yin Chao, Zhou Ai-hong(999)

《地质与勘探》第五届编委会

The Fifth Editorial Committee of GEOLOGY AND EXPLORATION

特邀编委 (按字母表顺序) Members of Specially Invited Editorial Committee (in alphabetical order):

陈毓川 CHEN Yuchuan	何继善 HE Jishan	刘光鼎 LIU Guangding	刘广志 LIU Guangzhi
莫宣学 MO Xuanxue	孙 枢 SUN Shu	王德滋 WANG Dezi	阎凤增 YAN Fengzeng
叶天竺 YE Tianzhu	殷鸿福 YIN Hongfu	翟裕生 ZHAI Yusheng	张洪涛 ZHANG Hongtao
赵鹏大 ZHAO Pengda			

主 任 Director of Editorial Committee:

闫学义 YAN Xueyi

副主任 Deputy Directors of Editorial Committee:

朱立新 ZHU Lixin	郝梓国 HAO Ziguo	琚宜太 JU Yitai	骆华宝 LUO Huabao
---------------	---------------	--------------	----------------

编 委 (按字母表顺序) Members of Editorial Committee (in alphabetical order):

A.M.Nikishen (Russia)	白万成 BAI Wancheng	CHANG Zhaoshan (Australia)	陈 汉 CHEN Han
陈建文 CHEN Jianwen	陈仁义 CHEN Renyi	邓 罕 DENG Jun	高 山 GAO Shan
高献计 GAO Xianji	巩恩普 GONG Enpu	郝梓国 HAO Ziguo	侯增谦 HOU Zengqian
胡瑞忠 HU Ruizhong	华宣奎 HUA Xuankui	琚宜太 JU Yitai	李 波 LI Bo
李广雪 LI Guangxue	李建伦 LI Jianlun	李继亮 LI Jiliang	刘建明 LIU Jianming
骆华宝 LUO Huabao	马延明 MA Yanming	毛景文 MAO Jingwen	NIU Yaoling (UK)
欧阳志鸿 OUYANG Zhihong	彭齐鸣 PENG Qiming	秦克章 QIN Kezhang	邱小平 QIU Xiaoping
孙 峰 SUN Feng	孙丰月 SUN Fengyue	V.I.Starostin (Russia)	V.V.Avtonin (Russia)
王安建 WANG Anjian	王京彬 WANG Jingbin	王炯辉 WANG Jionghui	王 驹 WANG Ju
王汝成 WANG Rucheng	王瑞江 WANG Ruijiang	王小烈 WANG Xiaolie	王训练 WANG Xunlian
王 研 WANG Yan	韦星林 WEI Xinglin	吴淦国 WU Ganguo	武 胜 WU Sheng
谢连平 XIE Lianping	徐水师 XU Shuishi	徐占海 XU Zhanhai	薛迎喜 XUE Yingxi
闫学义 YAN Xueyi	杨茂华 YANG Maohua	杨志刚 YANG Zhigang	伊丕厚 YI Pihou
袁从建 YUAN Congjian	曾普胜 ZENG Pusheng	张成江 ZHANG Chengjiang	张金带 ZHANG Jindai
张立飞 ZHANG Lifei	ZHOU Meifu (Hong Kong)	朱谷昌 ZHU Guchang	朱立新 ZHU Lixin

主 管 中国钢铁工业协会

主 办 中国冶金地质总局

中国地质学会

承 办 中国冶金地质总局矿产资源研究院

编辑出版 《地质与勘探》编辑部

办公地址 北京市顺义区机场东路2号国家地理
信息科技产业园2A组团3号楼 101300

通讯地址 北京市朝阳区首都机场航食路2号
100621-2 信箱 100621

电 话 010-53296110 53296111

传 真 010-53296000

电子信箱 dzykt@vip.sina.com

网 址 www.dzykt.com

主 编 卢 进

执行主编 孙 赫

副主编 王 梅

编 辑 郝情情 陈伟军

英文审译 高祥林

美术编辑 王寒梅

印 刷 北京印匠彩色印刷有限公司

国内发行 北京市报刊发行局

国外发行 中国出版对外贸易公司(北京782信箱)

订 阅 全国各地邮局(邮发代号: 82-504)

发行范围 国内外公开发行

Managed by

Sponsored by

Operated by

Edited and Published by

Tel

Fax

Email

Http

Editor in Chief

Executive Editor in Chief

Associate Editor in Chief

Editors

English Consultant

Art Editor

Printed by

Distributed by

Distributed abroad by

Subscription handled by

China Iron and Steel Association

China Metallurgical Geology Bureau (CMGB)

Geological Society of China

Institute of Mineral Resources Research, CMGB

GEOLOGY AND EXPLORATION Editorial Board

Building 3, Group 2A, National Geomatics Industrial Park,

No. 2 Airport East Road, Shunyi District,

Beijing, P.R. China 101300

010-53296110 53296111

010-53296000

dzykt@vip.sina.com

www.dzykt.com

Lu Jin

Sun He

Wang Mei

Hao Qingqing Chen Weijun

Gao Xianglin

Wang Hanmei

Beijing Yinjiang Color Printing Co., Ltd

Beijing Bureau for Distribution of Newspapers and Journals

China National Publishing Industry Trading Corporation

(P.O.Box 782, Beijing, China)

Local Post offices in China(82-504)

国内刊号: CN 11-2043/P 国际刊号: ISSN 0495-5331

ISSN 0495-5331



定价: 45.00元