



地质与勘探

4

郑深若题

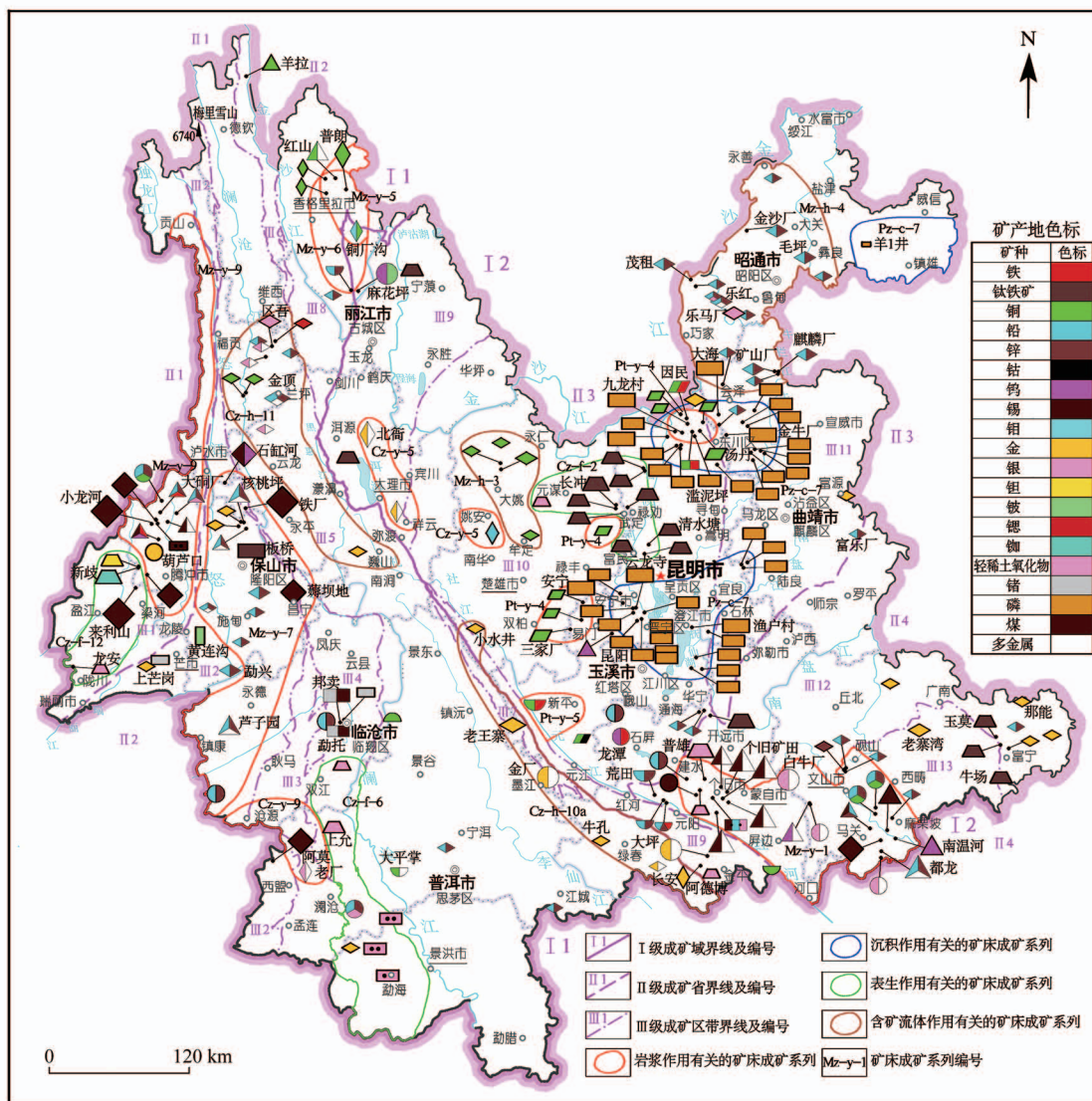
2021

第57卷 总第498期

GEOLOGY AND EXPLORATION

Since 1957

Vol.57 No.4 Sum498



■ 云南关键矿产重要矿床成矿系列
Minerogenetic Series of Key Mineral Deposits in Yunnan Province, China



中国冶金地质总局矿产资源研究院
中国地质学会

主办

地质与勘探

2021年7月 第57卷 第4期

云南省关键矿产专辑

本期特邀主编:卢映祥 孙 涛

目 录

序言	卢映祥
云南关键矿产重要矿床成矿系列	卢映祥,施玉北,孙 涛,曾 妍,李 蓉,曹晓民,程胜辉(0693)
基于 ASTER 与 Sentinel-2A 融合数据的云南普朗铜矿化蚀变信息提取 陈 琪,赵志芳,姜琦刚,夏既胜,孙 涛,曾诗卉(0728)
滇西梁河县新发现那俄铍矿岩石地球化学特征及铍成矿事件 燕利军,王胜江,陈曹军,严志安,余中明,邓志祥,吴清华,殷 伟(0739)
滇西盈江地区新泡山离子吸附型稀土矿床成矿条件及找矿前景	陈曹军,邓志祥,吴清华,燕利军,余中明,严志安(0751)
云南省澜沧地区风化壳型稀土矿化的新发现及找矿前景	柏 杨,邓志祥,毕晓路,钊文韬,殷 伟,夏建峰(0762)
滇西陇川营盘山离子吸附型稀土矿稀土元素分布特征 潘泽伟,卢映祥,罗建宏,唐 忠,余海军,苏肖宇,杨清标,付 浩(0784)
硫酸铵浸出-草酸沉淀稀土方法在找矿中的应用-以云南盈江县新泡山矿区为例 严志安,燕利军,陈曹军,王胜江,吴清华(0796)
云南镇雄地区新发现羊场超大型磷矿沉积环境及资源潜力分析	米云川,黄太平,周 骞,孙 涛,毕晓路(0808)
滇西大石坡超大型红柱石矿床成因:岩浆岩侵位的约束	李新民,明添学,肖静宇,李 蓉,李 伟(0825)
滇西北香格里拉东炉房铜钼矿床斑岩-热液成矿特征及找矿预测 段召艳,董 涛,杜 斌,曹晓民,董红国,李 冰,宋旭峰(0837)
滇西勐兴铅锌矿床热液方解石碳氧同位素、稀土元素特征及其指示意义	刘锦康,邓明国,毛政利,王 丹,耿齐卫(0852)
滇西镇康县放羊山铜铅锌矿床成矿流体及矿质来源探讨	沙建泽,邓明国,吴清华,杨淑胜,魏汐竹,金梦迪,燕利军(0865)
蚀变矿物填图技术在斑岩型铜矿找矿勘查中的应用-以滇西北香格里拉松诺矿床为例 杜 斌,董 涛,董红国,段召艳,曹晓民,兰文达,李 冰(0879)
滇东南富宁地区“半瓦型”辉绿岩地球化学特征及其与金矿成矿关系 王 涛,李云飞,和建华,易丙红,李 宾,俞少颖,余中明(0895)
滇西维西县铜厂箐铜矿床 C-O-H 同位素特征及其成因探讨	沙建泽,王 涛,徐 荣,邓明国,孙 涛,燕利军(0910)
云南省巧家县谓姑地区新元古代石英斑岩体形成时代及其地质意义 金建才,曾礼传,赵 勇,黄 跃,胡清华,张尔新,孙 涛(0920)
云南勐海地区离子吸附型稀土矿控矿因素及找矿前景 蓝信杰,张保涛,卢文姬,赵宪东,李星亮,王明波,韩 成,王禹杰(0935)

GEOLOGY AND EXPLORATION

Vol. 57 ,No. 4 July ,2021

Special Issue on Key Mineral Deposits in Yunnan Province
Specially – Invited Editors – in – Chief: Lu Yingxiang, Sun Tao

Contents

Preface	Lu Yingxiang
Minerogenetic Series of Key Mineral Deposits in Yunnan Province, China
..... Lu Yingxiang, Shi Yubei, Sun Tao, Zeng Yan, Li Rong, Cao Xiaomin, Cheng Shenghui(0693)	
Extraction of Mineralization Alteration Information from ASTER and Sentinel – 2A Remote Sensing Fusion Data in the Pulang Copper Mine of Yunnan Province	Chen Qi, Zhao Zhifang, Jiang Qigang, Xia Jisheng, Sun Tao, Zeng Shihui(0728)
Petrochemical Characteristics and Metallogenic Process of the Newly Discovered Na’ e Beryllium Deposit in the Liang- he Area, Western Yunnan Province	Yan Lijun, Wang Shengjiang, Chen Caojun, Yan Zhi’ an, She Zhongming, Deng Zhixiang, Wu Qinghua, Yin Wei(0739)
Metallogenic Conditions and Ore – Search Prospect of the Xinpaoshan Ion – Adsorption Type Rare – Earth Deposit in the Yingjiang Area, Western Yunnan	Chen Caojun, Deng Zhixiang, Wu Qinghua, Yan Lijun, She Zhongming, Yan Zhi’an(0751)
New Discovery of Rare – Earth Mineralization of the Weathering Crust Type and Ore – Search Prospect in the Lancang Area, Yunnan Province	Bai Yang, Deng Zhixiang, Bi Xiaolu, Chuan Wentao, Yin Wei, Xia Jianfeng(0762)
REE Distribution Characteristics of the Yingpanshan Ion Adsorption Type Rare – Earth Deposit in the Longchuan Area of Western Yunnan	Pan Zewei, Lu Yingxiang, Luo Jianhong, Tang Zhong, Yu Haijun, Su Xiaoyu, Yang Qingbiao, Fu Hao(0784)
Application of the Ammonium Sulfate Leaching – Oxalic Acid Precipitating REE Method to Mineral Exploration: An Example of the Xinpaoshan Mine in Yingjiang County, Yunnan Province	Yan Zhi’an, Yan Lijun, Chen Caojun, Wang Shengjiang, Wu Qinghua(0796)
The Sedimentary Environment and Resource Potential of the Newly Discovered Yangchang Super – Large Phosphate Deposit in the Zhenxiang Area, Yunnan	Mi Yunchuan, Huang Taiping, 万方数据

- Genesis of the Dashipo Super – Large Andalusite Deposit in Western Yunnan Province: Constraints of Magmatic Emplacement Li Xinmin, Ming Tianxue, Xiao Jingyu, Li Rong, Li Wei(0825)
- Characteristics of Porphyry – Hydrothermal Mineralization and Prospecting Prediction of the Donglufang Cu – Mo Deposit in the Shangri – La Area, northwestern Yunnan Province Duan Zhaoyan, Dong Tao, Du Bin, Cao Xiaomin, Dong Hongguo, Li Bing, Song Xufeng(0837)
- Characteristics and Indication of Carbon – Oxygen Isotopes and Rare Earth Elements of Hydrothermal Calcite from the Mengxing Pb – Zn Deposit, Western Yunnan Liu Jinkang, Deng Mingguo, Mao Zhengli, Wang Dan, Geng Qiwei(0852)
- Sources of Ore – Forming Fluids and Mineral Materials of the Fangyangshan Cu – Pb – Zn Polymetallic Deposit in Zhenkang County, Western Yunnan Sha Jianze, Deng Mingguo, Wu Qinghua, Yang Shusheng, Wei Xizhu, Jin Mengdi, Yan Lijun(0865)
- Application of Alternation Mineral Mapping in Porphyry Copper Deposits: A Case Study of the Songnuo Deposit in the Shangrila Region, Northwest Yunnan Du Bin, Dong Tao, Dong Hongguo, Duan Zhaoyan, Cao Xiaomin, Lan Wenda, Li Bing(0879)
- Geochemical Characteristics of “Half – Tile Type” Diabase in the Funing Area of Southeastern Yunnan and its Relationship with Gold Mineralization Wang Tao, Li Yunfei, He Jianhua, Yi Binghong, Li Bin, Yu Shaoying, She Zhongming(0895)
- C – O – H Isotopic Composition and Genesis of the Tongchangqing Copper Deposit in the Lanping Basin, Weixi County, Western Yunnan Sha Jianze, Wang Tao, Xu Rong, Deng Mingguo, Sun Tao, Yan Lijun(0910)
- Formation Age and Geological Significance of the Neoproterozoic Quartz Porphyry in the Weigu Area of Qiaojia County, Yunnan Province Jin Jiancai, Zeng Lizhuan, Zhao Yong, Huang Yue, Hu Qinghua, Zhang Erxing, Sun Tao(0920)
- Ore Controlling Factors and Ore – Search Prospect of Rare – Earth Deposits of the Ion Adsorption Type in the Menghai Area, Yunnan Province Lan Xinjie, Zhang Baotao, Lu Wenji, Zhao Xiandong, Li Xingliang, Wang Mingbo, Han Cheng, Wang Yujie(0935)