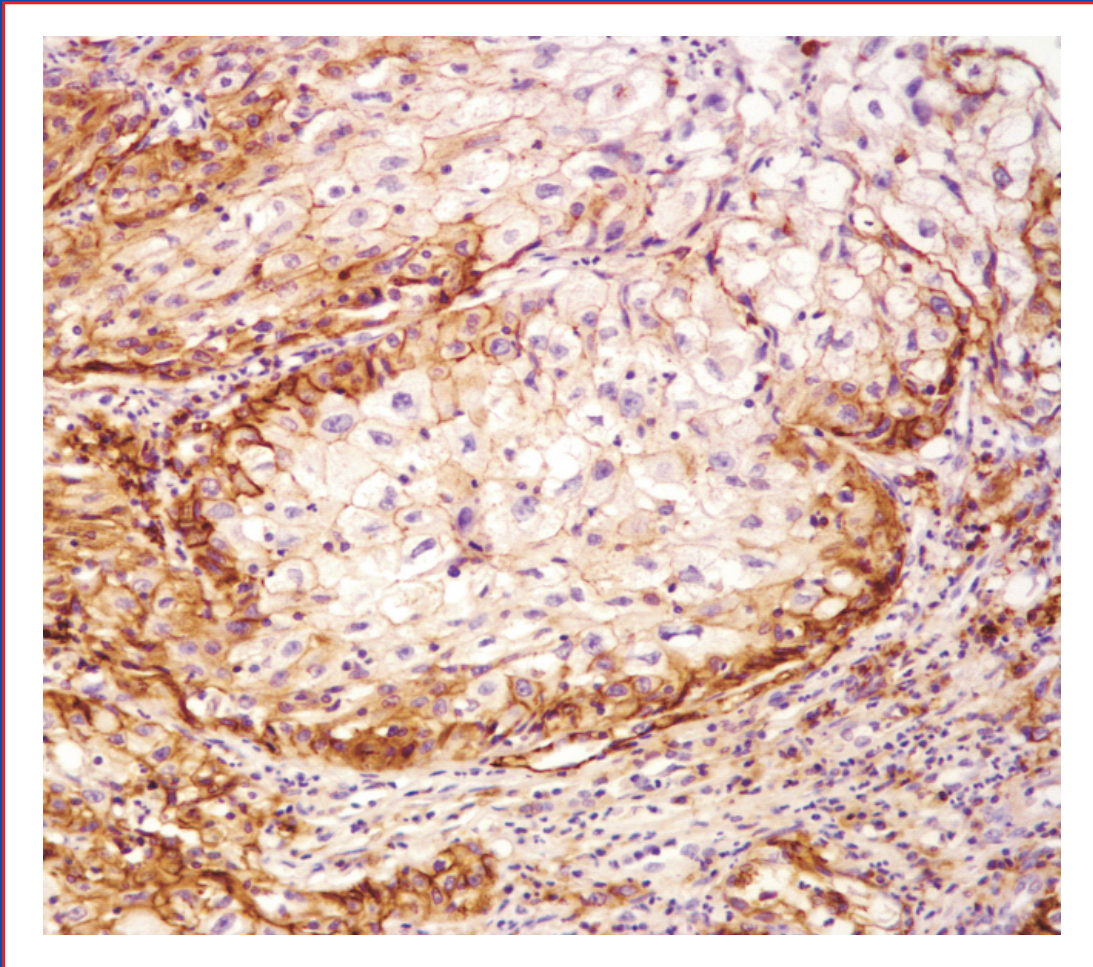


Chinese Journal of Cancer



- The 150 most important questions in cancer research and clinical oncology
- A collection of 150 important pro-metastatic genes
- Immune mediators in tumor microenvironment of prostate cancer
- Tumor microenvironment and breast cancer metastasis

Volume 36 Issue 3 (Total 308) March 2017

CONTENTS

Editorial

- 103 **The 150 most important questions in cancer research and clinical oncology series: questions 6–14**

Edited by Chinese Journal of Cancer

- 108 **Cancer metastasis: issues and challenge**

Chao-Nan Qian, Yan Mei and Jian Zhang

Review

- 112 **For robust big data analyses: a collection of 150 important pro-metastatic genes**

Yan Mei, Jun-Ping Yang and Chao-Nan Qian

- 121 **Tumor microenvironment: driving forces and potential therapeutic targets for breast cancer metastasis**

Hong-Yan Xie, Zhi-Min Shao and Da-Qiang Li

- 131 **Immune mediators in the tumor microenvironment of prostate cancer**

Jinlu Dai, Yi Lu, Hernan Roca, Jill M. Keller, Jian Zhang, Laurie K. McCauley and Evan T. Keller

- 139 **Corepressor metastasis-associated protein 3 modulates epithelial-to-mesenchymal transition and metastasis**

Liang Du, Zhifeng Ning, Fuxing Liu and Hao Zhang

Original Article

- 150 **Down-regulation of E-cadherin enhances prostate cancer chemoresistance via Notch signaling**

Wenchu Wang, Lihui Wang, Atsushi Mizokami, Junlin Shi, Chunlin Zou, Jinlu Dai, Evan T. Keller, Yi Lu and Jian Zhang