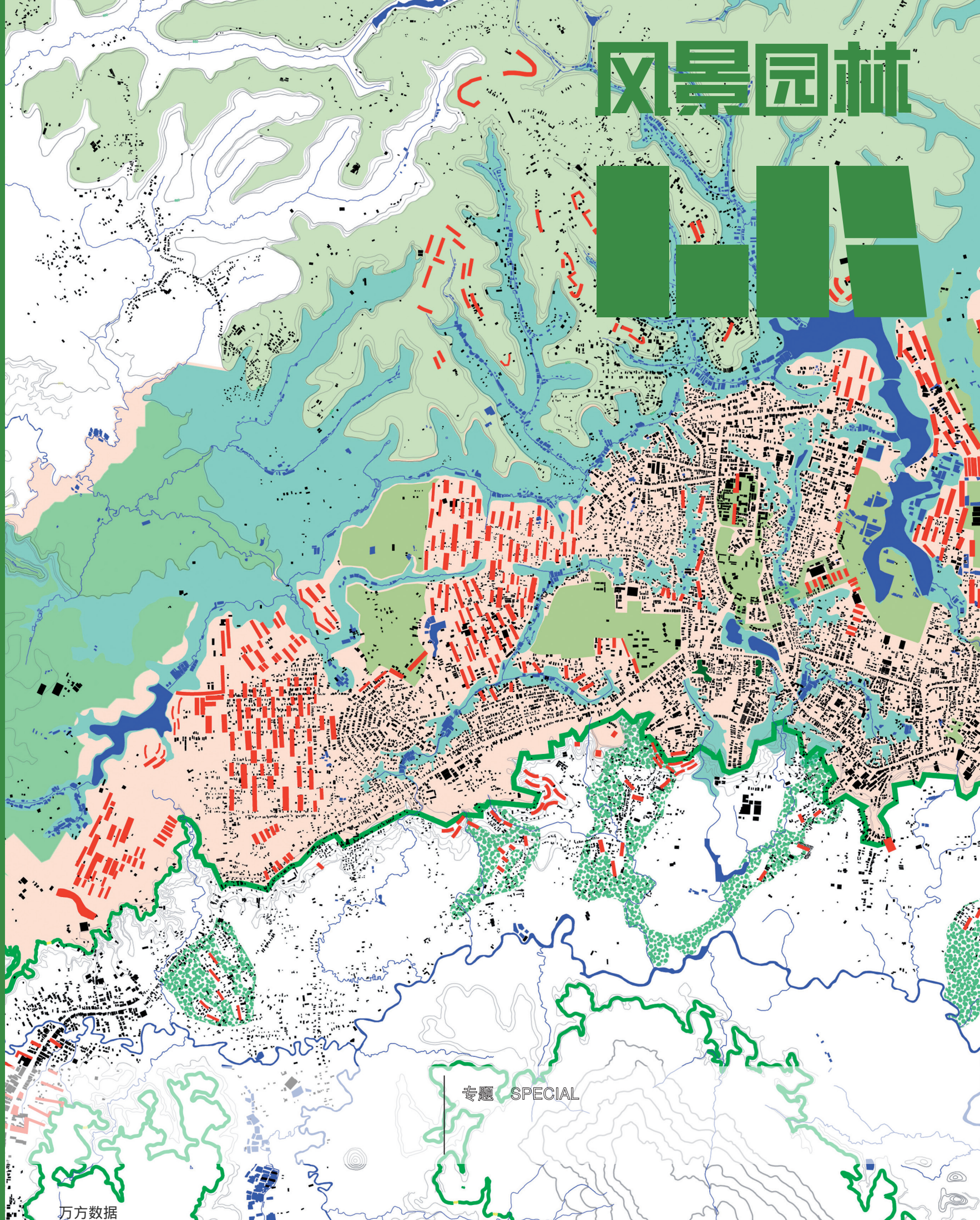


风景园林



专题 SPECIAL



刊首语 6 气候变化与设计应对 郑曦

专题：气候变化及设计应对策略

- 10 设计师的地球工程“工具箱”：危机给予风景园林师扭转、修复和再生地球气候的机会
著：(美) 玛莎·施瓦茨 (美) 伊迪丝·卡茨 译：李致 校：胡一可
- 26 论设计气候效应：兼论气候变化下的设计应对策略
沈清基 洪治中 安纳*
- 32 气候变化影响下国外沿海城市应对海平面上升的景观策略与启示
陈崇贤 刘京一*
- 38 适应与抵制：越南为应对气候变化采取的措施
著：(比利时) 布鲁诺·德·梅尔德 (比利时) 凯利·香农 译：周尤美
- 53 滨海适应性中的空间公平倡议
著：(荷兰) 基斯·洛克曼 译：刘京一
- 63 德国景观规划应对气候变化策略 徐昉
- 69 上海气候变化脆弱性评估与治理对策 车生泉 谢长坤
- 75 气候变化背景下风景园林的功能定位及应对策略
刘长松

作品

- 80 借用自然力量应对极端风暴的韧性设计——珠海香炉湾沙滩景观带
魏伟 张一康 张忠起 赖继春

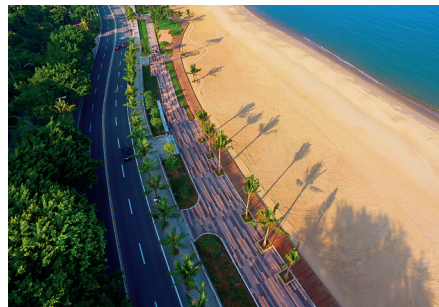
研究

- 85 生态系统服务制图单元如何更好地支持风景园林规划设计？
申佳可 王云才*
- 92 基于 NSGA-II 算法的集雨型绿地低影响开发设施规模优化计算方法及应用——以南阳院士小镇为例
林辰松 董宇翔 陈泓宇 李雄*
- 98 城市山地公园水环境优化设计方法研究
侯庆贺 袁旸洋* 刘润 程雪
- 104 旅游发展下村民对传统村落景观的依恋感知研究——以云南沙溪寺登村为例
张琳 杨珂
- 110 洞天福地中的健康人居思想研究
郑青青 金荷仙* 吴会
- 115 清乾隆时期扬州倚虹园景观复原考析——扬州湖上园林与地方文化空间
曹磊 李伊依 霍艳虹*

121 《风景园林》2020 年总目次



封面设计：北京多义景观规划设计事务所
Cover Design: Atelier DYJG



封面作品：Bao Loc Until 2030
Cover Project: Bao Loc Until 2030



封面提供：都市主义与建筑研究组 (RUA)
Photo Credit: Research Urbanism and Architecture (RUA)



Preface	6	Climate Change and Design Response	ZHENG Xi
Special: Climate Change and Design Strategies	10	The Designer's Geoengineering Toolkit: Crisis Creates Opportunities for Landscape Architects to Reverse, Repair and Regenerate the Earth's Climate	Authors: (USA) Martha Schwartz, (USA) Edith Katz Translator: LI Zhi Proofreader: HU Yike
	26	Climate Effect of Design: On Design Strategy for Coping with Climate Change	SHEN Qingji, HONG Zhizhong, AN Na*
	32	Landscape Strategies and Enlightenment of Foreign Coastal Cities to Cope with Sea Level Rise Under Impact of Climate Change	CHEN Chongxian, LIU Jingyi*
	38	Adaptation & Resistance: Vietnamese Context-Specific Responses to Climate Change	Authors: (BEL) Bruno De Meulder, (BEL) Kelly Shannon Translator: ZHOU Youmei
	53	A Call for Spatial Justice in Coastal Adaptation	Author: (NLD) Kees Lokman Translator: LIU Jingyi
	63	Landscape Planning Strategies to Cope with Climate Change in Germany	XU Fang
	69	Vulnerability Assessment and Countermeasures of Climate Change Governance Strategy in Shanghai	CHE Shengquan, XIE Changkun
	75	Functional Orientation and Countermeasures of Landscape Architecture Under the Background of Climate Change	LIU Changsong
Project	80	Resilient Design by Natural Methods in Response to Extreme Storms: The Landscape Belt of Xianglu Bay Beach in Zhuhai	WEI Wei, ZHANG Yikang, ZHANG Zhongqi, LAI Jichun
Research	85	How Can Ecosystem Services Mapping Units Better Support Landscape Planning and Design?	SHEN Jiake, WANG Yuncai*
	92	Optimal Calculation Method of Size of LID Facilities for Rainwater Harvesting Green Space Based on NSGA-II Algorithm and Application: A Case Study of Nanyang Academician Town	LIN Chensong, DONG Yuxiang, CHEN Hongyu, LI Xiong*
	98	Research on Water Environment Optimization Design Methods of Urban Mountain Parks	HOU Qinghe, YUAN Yangyang*, LIU Run, CHENG Xue
	104	Research on Attachment Perception of Villagers to Traditional Village Landscape Under Tourism Development: A Case Study of Sideng Village, Shaxi Town, Yunnan Province	ZHANG Lin, YANG Ke
	110	Research on Healthy Human Settlements Thought in "Cavern of Heaven and Place of Blessing"	ZHENG Qingqing, JIN Hexian*, WU Hui
	115	Analysis on Landscape Restoration of Yangzhou Yihong Garden in the Emperor Qianlong Period of Qing Dynasty: Lakeside Gardens of Yangzhou and Local Culture Space	CAO Lei, LI Yinong, HUO Yanhong*
	121	Index of 2020 Issues	



广告索引 Advertisement Index

封底 北京《风景园林》杂志社有限公司
封二 深圳市蕾奥规划设计咨询股份有限公司

封三 北京北林地景园林规划设计院有限责任公司
127 北京清华同衡规划设计研究院有限公司

128 《中国花卉报》