

风景园林



专题 SPECIAL

刊首语 6 面向绿色发展的城市设计 郑曦

专题：绿色城市设计

10 气候变化如何改变城市设计 著：(美) 乔纳森·巴奈特 译：徐搏谦

18 绿道系统引导城市形态持续性发展的机制——以美国夏洛特大都市区为例

林中杰 解文龙 李明峻 邱志勇*

24 非正规框架规划设计方法 著：(美) 戴维·加弗努尔 译：张晨笛

39 气候韧性导向的严寒地区城市设计框架——以长春市总体城市设计为例

孙澄 解文龙

45 从廊道到全域——绿色城市设计引领下的城乡蓝绿空间网络构建 王世福 刘联璧

51 绿色城市设计策略体系——以粤港澳大湾区为例 李敏稚 尉文婕

58 精准城市形态对街道温度的影响测度与设计应对 叶宇 殷若晨 胡杨 方家*

作品 66 规划更美好的未来：城市设计的系统方法 郑潇 (美) 瑞安·帕尔

研究 74 “水利-风景”视野下古代陂湖的风景体系及典型特征 王晞月 王向荣*

80 中国古代都城中“宫”与“苑”空间关系变迁探析 张群 李军*

87 户外健康环境综合文献图景研究 陈奕言 聂煊城 陈箐*

94 环境流行病学视角下城市绿地空间的健康效应研究 李畅

100 基于多源数据的北京市第二道绿化隔离地区生态系统支持服务与景观多样性关联研究

葛韵宇 李雄*

106 福建省自然保护地边界交叉重叠的格局特征 张雪 池梦薇 兰思仁 廖凌云*

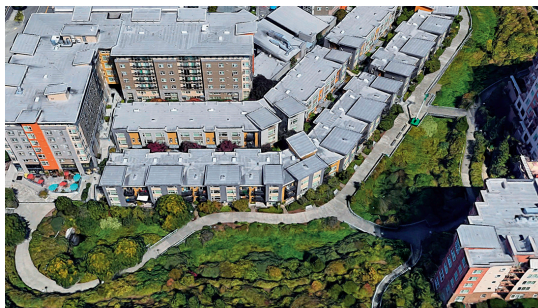
113 北美黄石到育空(Y2Y)国家公园群生态完整性保护与管理 王梦桥 王忠君*

119 基于实验与扎根理论的保护地视听感知研究——以武陵源世界自然遗产地为

许晓青 吴屹* 冯婧婕



封面设计：北京多义景观规划设计事务所
Cover Design: Atelier DYJG



封面作品：长春市总体城市设计
Cover Project: General Urban Design of Changchun



封面提供：赵宏宇、解文龙
Photo Credit: ZHAO Hongyu, XIE Wenlong



Preface	6	Urban Design for Green Development	ZHENG Xi
Special: Green Urban Design	10	How a Changing Climate Will Transform Urban Design	Author: (USA) Jonathan Barnett Translator: XU Boqian
	18	Mechanism of Sustainable Development of Urban Form Guided by Greenway System: A Case Study of Charlotte Metropolitan Region, USA	LIN Zhongjie, XIE Wenlong, LEE Ming-Chun, QIU Zhiyong*
	24	The Informal Armature Approach	Author: (USA) David Gouverneur Translator: ZHANG Chendi
	39	Climate Resilience Oriented Urban Design Framework for Cities in Severe Cold Regions: A Case Study of General Urban Design of Changchun	SUN Cheng, XIE Wenlong
	45	From Corridor to Whole Region: Construction of Urban and Rural Blue-Green Space Network Under the Guidance of Green Urban Design	WANG Shifu, LIU Lianbi
	51	Green City Design Strategy System: A Case Study of Guangdong-Hong Kong-Macao Greater Bay Area	LI Minzhi, WEI Wenjie
	58	Measuring the Impacts of Fine-Scale Urban Forms on Street Temperatures and Design Responses	YE Yu, YIN Ruochen, HU Yang, FANG Jia*
Project	66	Planning for a Better Future: A Systematic Approach to Urban Design	ZHENG Xiao, (USA) Ryan Parr
Research	74	The Landscape System and Characteristics of Ancient Impounding Lake from the "Water Conservancy-Landscape" Perspective	WANG Xiyue, WANG Xiangrong*
	80	Analysis of the Spatial Relationship Changes Between "Palace" and "Garden" in Ancient Chinese Capital Cities	ZHANG Qun, LI Jun*
	87	A Comprehensive Literature Mapping of Outdoor Healthy Environment	CHEN Yiyao, NIE Xuancheng, CHEN Zheng*
	94	Research on the Health Effects of Urban Green Space from the Perspective of Environmental Epidemiology	LI Chang
	100	Research on Relationship Between Ecosystem Support Services and Landscape Diversity in the Second Green Belt Area of Beijing Based on Multi-source Data	GE Yunyu, LI Xiong*
	106	Pattern Characteristics of Protected Areas with Overlapping Boundaries in Fujian Province	ZHANG Xue, CHI Mengwei, LAN Siren, LIAO Lingyun*
	113	Ecological Integrity Conservation and Management of Group of National Parks of Yellowstone to Yukon in North America	WANG Mengqiao, WANG Zhongjun*
	119	Research on Audio-Visual Perception in Protected Areas Based on Experiments and Grounded Theory: A Case Study of Wulingyuan World Natural Heritage Site	XU Xiaoqing, WU Hong*, FENG Jingjie



广告索引 Advertisement Index

封底 北京北林地景园林规划设计院有限责任公司
封二 重庆纬图景观设计有限公司

封三 笛东规划设计(北京)股份有限公司
125 易兰(北京)规划设计股份有限公司
126 中国园林工程有限责任公司

127 《南方建筑》
128 《风景园林》2021 LA 风景园林奖