

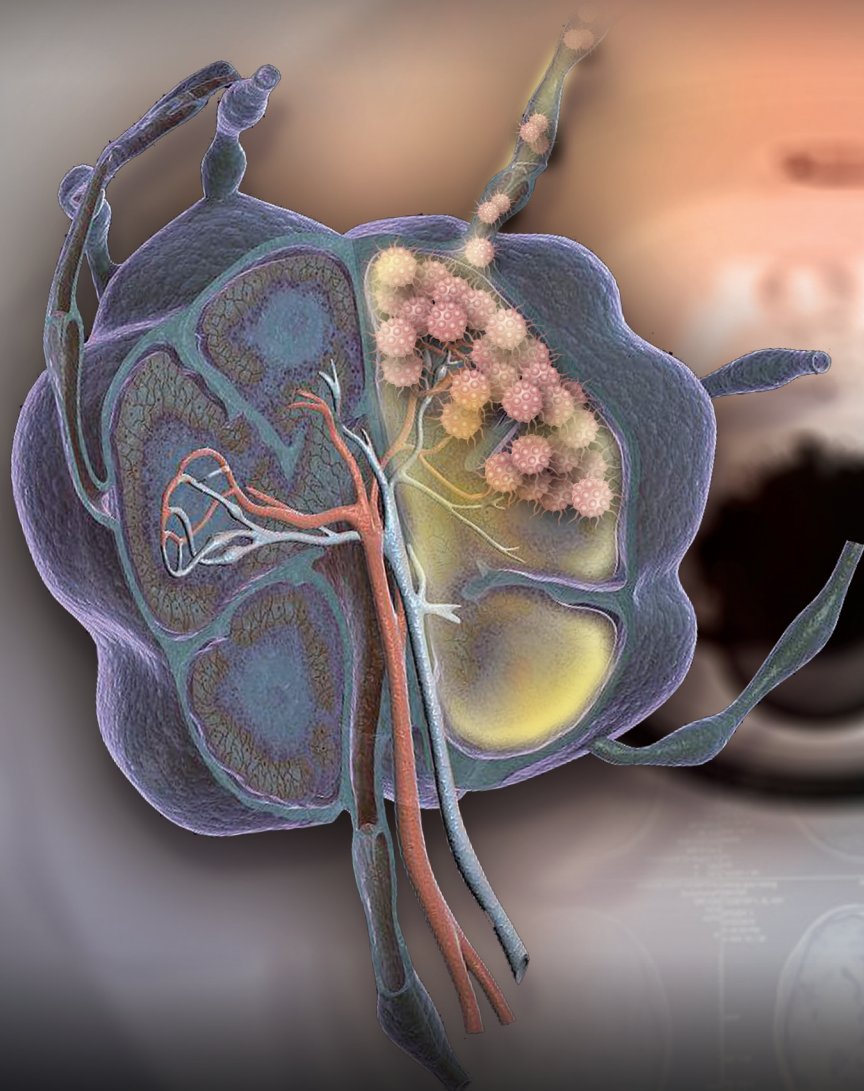


ISSN 1674-4500
CN 44-1630/R

Journal of Molecular Imaging

分子影像学杂志

2018
Volume 41
Number 2



- 中国科技论文统计源期刊
- 《中国核心期刊(遴选)数据库》收录期刊
- 中国学术期刊综合评价数据库(CAJCED)统计源期刊
- 《中国学术期刊(光盘版)》收录期刊

分子影像学杂志

第 41 卷 第 2 期 2018 年 4 月

目 次

临床研究

- 137 3 种不同口腔慢性炎症引起牙源性上颌窦炎的锥形束 CT 比较
李晓敏, 陈 蕾, 张治勇, 包丽杰
- 142 B-flow 及超声造影在类风湿关节炎手腕小关节滑膜血流显像中的应用
林增坤, 温 红
- 147 婴儿先天性肝门部囊性占位的超声鉴别
张遇乐, 王 娜, 关步云, 陈金卫
- 152 肾上腺区肿瘤与肿瘤样病变的 CT 诊断与鉴别
罗立镇, 刘东旭, 张宗宝, 蔡 锋, 黄锦炽
- 157 以癫痫发作为主要临床表现的线粒体脑肌病患者的临床及 MRI 特点分析
肖 靖, 江 利
- 161 体位在口服甘露醇结合多层螺旋 CT 小肠造影中的应用
邱永友, 陈建春, 陈 铭, 蒲书译, 蔡映红, 林秀琼
- 165 肝硬化并发原发性肝癌合并肝囊肿患者的影像学特征
钟景云, 梁满球, 聂悦富, 黎 宁
- 169 高分辨率 CT 诊断儿童闭塞性毛细支气管炎的价值
李 林, 董春华, 易明岗, 高 鑫, 杨光勇, 于 柯, 马长友, 赵建设
- 172 64 排螺旋 CT 冠状动脉造影在壁冠状动脉检测中的价值
冯庆瑜, 阮卫锋, 李焯洪
- 175 多层螺旋 CT 诊断结节性甲状腺肿合并甲状腺癌
陈广银, 陈悦熙
- 178 超声检查对胎儿脐带血管前置的诊断价值
朱成德
- 181 64 排螺旋 CT 增强诊断周围型肺癌
田素升, 张 炜
- 185 两种输尿管扩张方法治疗输尿管下段狭窄的效果对比
卢运田, 郭晓辉, 曹朝晖, 文卫军, 曾桓聪, 严 超
- 212 非前哨淋巴结转移预测模型对中国乳腺癌患者的验证价值
陆健伟, 吴佩琪
- 219 中孕早期 PAPP-A、INH-A、 β -hCG 及子宫动脉搏动指数对子痫前期的预测
李跃萍, 闫庆峰, 胡春霞, 金 松, 符 火, 李武莉
- 224 随机光学重构显微镜在外泌体观察中的应用
马 迪, 夏仁品, 冯志坚, 杨筱燕, 付珏兰, 马各富
- 229 青少年女性乳腺恶性叶状肿瘤内癌的临床病理诊断陷阱分析
秦艳, 陈 莹, 周东华
- 233 无创指标对乙型肝炎肝硬化患者食管静脉曲张程度的预测价值
韦 仲, 毛 华
- 237 LEEP 刀治疗宫颈上皮内瘤变对患者妊娠的影响
李 燕, 李 琪
- 241 妊娠期糖尿病治疗对其后代儿童期肥胖症的影响
钟成秋, 万绪波

- 245 罗哌卡因联合地塞米松连续股神经阻滞在人工全膝关节置换术后镇痛中的应用
邓华军, 马志佳
- 249 颈动脉硬化患病情况及危险因素分析
崔美红, 邓华钊
- 253 聚乙二醇电解质溶液分次与单次口服肠道准备方案的清洁效果和耐受性比较
李佳璇, 杨新魁, 雷国萍
- 257 儿童肥胖并发脂肪肝的危险因素分析
赵康路, 居红珍
- 261 加速康复外科理念在老年患者腹腔镜胆囊切除中的应用
陈书德, 纪文斌, 罗英, 梁斌, 许声江
- 264 饮食习惯对高血压患者动脉粥样硬化的影响
李华, 卢吴柱, 程林, 邱春梅, 洗建忠
- 268 家庭医生服务模式对婴幼儿生长发育的影响
许伟红, 胡晓周, 李丽贤, 吴昕杰
- 271 二肽基肽酶 4 抑制剂与长效胰岛素对 2 型糖尿病患者相关血生化指标影响的比较
陈秀珊, 钟志鹏, 李巧环, 李舫

综述

- 189 腹部术中输尿管实时识别研究进展
黄陆茂, 辛学刚
- 196 心肌保护策略的研究进展
姜博文, 韩珂
- 201 勃起功能障碍药物治疗的研究现状
龚知城, 左翼, 钟义洋, 赵善超
- 207 基于搜索引擎数据的流感监测预警
温丽, 蔡永铭

医学教育

- 274 基于体检分析的高校教职工健康管理——以广东省某高校为例
郑普生, 谭惠
- 278 PBL 教学模式在骨科教学中的实践
李涛, 史占军, 吴宣平, 陈昊, 傅丽兰

护理园地

- 281 个性化护理干预在二次手术主动脉夹层患者中的应用: 附 1 例报告
谢凤媛, 王娟, 钟素华, 蒋飞娟, 周忠信, 熊勇
- 284 间断负压引流联合冲洗治疗感染创面的护理
林秋娴, 许秋兰

总编辑: 陈望忠

本期责任编辑: 孙昌朋

本期责任校对: 林萍

期刊基本参数: CN 44-1630/R*1977*m*A4*74*zh+en*P* ¥22:00*1000*36*2018-04

FENZI YINGXIANGXUE ZAZHI

Journal of Molecular Imaging

Volume 41 Number 2 April 2018

Contents

Clinical Research

- 137 Comparative study of the CBCT findings of odontogenic maxillary sinusitis caused by 3 different chronic oral inflammations
LI Xiaomin, CHEN Lei, ZHANG Zhiyong, BAO Lijie
- 142 Value of B-flow and contrast-enhanced ultrasonography in the imaging of synovial blood flow of small joints of wrist and hand in rheumatoid arthritis
LIN Zengkun, WEN Hong
- 147 Ultrasonic differential diagnosis of infant congenital cystic mass in the hepatic hilar
ZHANG Yule, WANG Na, GUAN Buyun, CHEN Jinwei
- 152 CT diagnosis and differential diagnosis of adrenal tumor and tumor-like lesions
LUO Lizhen, LIU Dongxu, ZHANG Zongbao, CAI Feng, HUANG Jinchi
- 157 Clinical and MRI features of mitochondrial encephalomyopathy patients with seizure as the main clinical manifestation
XIAO Jing, JIANG Li
- 161 Clinical application of prone multislice spiral CT enterography with isosmotic mannitol as oral contrast in bowel disease treatment
QIU Yongyou, CHEN Jianchun, CHEN Ming, PU Shuze, CAI Yinghong, LIN Xiuqiong
- 165 Imaging characteristics of hereditary hepatic carcinoma combined with cirrhosis in patients with hepatic cysts
ZHONG Jingyun, LIANG Manqiu, NIE Yuefu, LI Ning
- 169 HRCT in the treatment of bronchiolitis obliterans in children
LI Lin, DONG Chunhua, YI Minggang, GAO Xin, YANG Guangyong, YU Ke, MA Changyou, ZHAO Jianshe
- 172 Evaluation of 64-slice spiral CT coronary angiography in the detection of mural coronary artery
FENG Qingyu, RUAN Weifeng, LI Zhuohong
- 175 Value of MSCT in diagnosis of nodular goiter with coexistent thyroid carcinoma
CHEN Guangyin, CHEN Yuexi
- 178 Clinical value and significance of ultrasonography in the diagnosis of fetal umbilical vasa previa
ZHU Chengde
- 181 Multi-slice spiral CT enhancement examination in the diagnosis and differential diagnosis of peripheral lung cancer
TIAN Susheng, ZHANG Wei
- 185 Comparative study on two methods of dilatation in the treatment of lower ureteral stricture
LU Yuntian, GUO Xiaohui, CAO Zhaohui, WEN Weijun, ZENG Huancong, YAN Cao
- 212 Validation of the non-sentinel lymph node metastasis prediction models in Chinese breast cancer population and the construction of a new model
LU Jianwei, WU Peiqi
- 219 PAPP-A, INH-A, β -hCG and uterine artery pulsatility index for the prediction of preeclampsia at the early second trimester
LI Yueping, YAN Qingfeng, HU Chunxia, JIN Song, FU Huo, LI Wuli
- 224 Application of stochastic optical reconstruction microscopy in the observation of exosomes
MA Di, XIA Renpin, FENG Zhijian, YANG Xiaoyan, FU Juelan, MA Gefu
- 229 Traps in clinicopathologic diagnosis of malignant phyllodes tumor of the breast in adolescent female patients with intraductal carcinoma
QIN Yan, CHEN Ying, ZHOU Donghua
- 233 Predictive value of non-invasive parameter for the degree of esophageal varices in patients with post-hepatitis B cirrhosis
WEI Zhong, MAO Hua
- 237 Impact of LEEP on the pregnancy outcomes for CINIII patients
LI Yan, LI Qi
- 241 Effect of the treatment of gestational diabetes on the offspring's childhood obesity
ZHONG Chengqiu, WAN Xubo

- 245 Application of dexamethasone plus ropivacaine for continuous femoral nerve block in postoperative analgesia of patients undergoing total knee arthroplasty
DENG Huajun, MA Zhijia
- 249 Prevalence and risk factors of carotid atherosclerosis in inpatients in a particular hospital
CUI Meihong, DENG Huazhao
- 253 Comparative study of the cleaning effect and tolerance of fractionated dose and single dose polyethylene glycol electrolyte solution bowel preparation
LI Jiaxuan, YANG Xinkui, LEI Guoping
- 257 Risk factors of fatty liver in obese children
ZHAO KangLu, JU HongZhen
- 261 Application of enhanced recovery after surgery in laparoscopic cholecystectomy of elderly patients
CHEN Shude, JI Wenbin, LUO Yin, LIANG Bin, XU Shengjiang
- 264 Effects of diet habits on atherosclerosis in essential hypertensive patients
LI Hua, LU Wuzhu, CHENG Lin, QIU Chunmei, XI Jianzhong
- 268 Effect of family physician services on infants' growth and development
XU Weihong, HU Xiaozhou, LI Lixian, WU Xinjie
- 271 Effects of DPP4 inhibitor and long-acting insulin therapy on blood biochemical indexes of type 2 diabetes: a comparative study
CHEN Xiushan, ZHONG Zhipeng, LI Qiaohuan, LI Ke

Review

- 189 Research progress of real-time identification of ureter during abdominal surgery
HUANG Lumao, XIN Xuegang
- 196 Progress in the myocardial protective strategies research
JIANG Bowen, HAN Ke
- 201 Research status of erectile dysfunction pharmacotherapy
GONG Zhicheng, ZUO Yi, ZHONG Yiyang, ZHAO Shanchao
- 207 Influenza surveillance and early warning system based on search engine data
WEN Li, CAI Yongming

Medical Education

- 274 Health management of college faculty based on physical examination result analysis-taking a college in Guangdong for example
ZHENG Pusheng, TAN Hui
- 278 Application of PBL model in orthopedics teaching
LI Tao, SHI Zhanjun, WU Xuanping, CHEN Hao, FU Lilan

Nursing

- 281 Application of personalized holistic nursing service on aortic dissection patients who had secondary operation: a case report
XIE Fengjiao, WANG Juan, ZHONG Suhua, JIANG Feijuan, ZHOU Zhongxin, XIONG Yong
- 284 Nursing effect of irrigation combined with intermittent vacuum sealing drainage in the treatment of infected wounds
LIN Qiuxian, XU Qiulan

Editorial Director: CHEN Wangzhong

Executive Editor: SUN Changpeng

Executive Proofreaders: LIN Ping