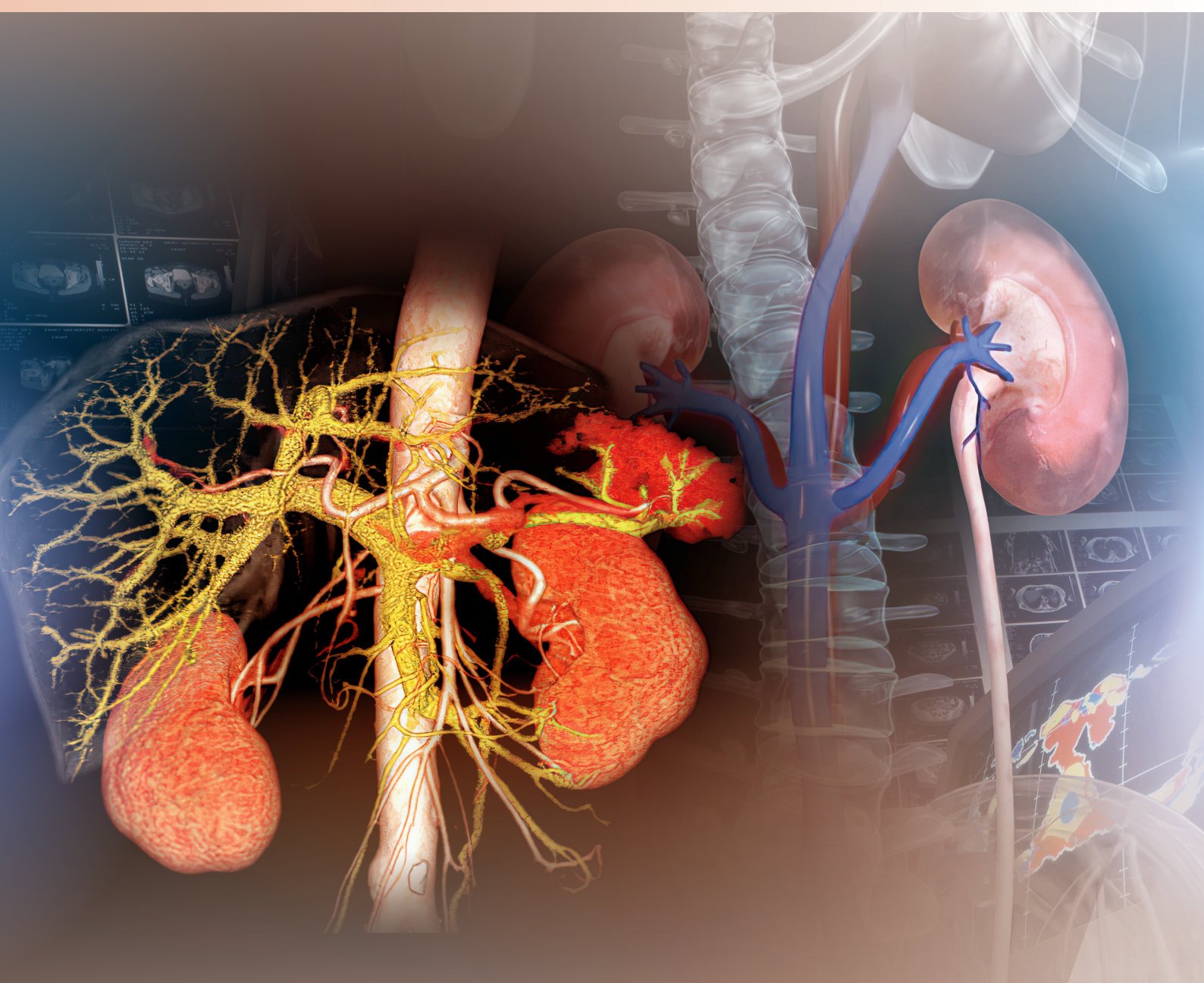


Journal of Molecular Imaging

分子影像学杂志

2021
Volume 44
Number 6



- 中国科技核心期刊(中国科技论文统计源期刊)
- 中国学术期刊综合评价数据库(CAJCED)统计源期刊
- 《中国核心期刊(遴选)数据库》收录期刊
- 美国《乌利希期刊指南》(Ulrichsweb)来源期刊

分子影像学杂志

第 44 卷 第 6 期 2021 年 11 月 (卷终)

目 次

临床研究

- 885 取比值后弥散张量成像参数对脊髓型颈椎病的诊断价值
姚瑞鑫,郭会利,张斌青,叶艳君
- 892 新生儿缺氧缺血性脑病中扩散张量成像对脑白质损伤及预后的诊断价值
魏华滨,闫翠娇,刘爱宁,全冠氏
- 900 乳腺癌患者自动乳腺容积冠状面特征与Ki67、C-erbB-2的相关性
黄思,肖耀成,李建,左文思
- 905 基于金属钆-儿茶酚构建的纳米影像探针在小鼠正常器官的双模态成像
刘杰,王玉柱
- 911 Kaiser评分不同界值应用于乳腺病变MRI诊断的效能比较
易熙,王贵良,马荣,曾禹莉,陈鹰,樊志红
- 917 超声引导下经皮穿刺置管引流术的应用时机对中度重症急性胰腺炎的疗效
马力,李晓锋,熊燃,李海量,曾洁,刘红梅
- 922 普美显肝胆期甜甜圈结节MRI表现及其与结节信号胆汁淤积的关系
张桂荣,张妍妍,张博,丁墩,杨全新,孙泓泓
- 927 磁共振弥散加权成像结合三维乳腺数字化断层摄影钙化分数在乳腺良恶性钙化病变鉴别中的诊断价值
王毅,黄美铃,蔡思清,赖清泉,吴宏,黄启明
- 932 磁共振—经直肠超声认知融合引导下前列腺靶向穿刺联合系统穿刺对血清前列腺特异性抗原水平4~20 ng/mL患者的前列腺癌诊断有效性
陆健斐,冯蕾,卜锐,韦海荣,刘小艳,章然
- 937 超声心动图在评估非ST抬高型心肌梗死老年患者梗死相关动脉中的临床价值
周春美,凡利敏,谢扬,吴垠
- 941 颞下颌关节紊乱病患者临床特征及MRI影像表现
官晓晖,韦惠平,李传,黄涛
- 945 术前多层螺旋CT增强扫描在老年非小细胞肺癌患者手术治疗中的应用价值
李汝林,张惠玲,周德伟,林志武,樊建刚
- 950 小视野ZOOMit DWI与RESOLVE DWI技术对鼻咽部图像价值的价值比较
郭广源,叶裕丰,邓炜,梁奇伟,郭燕萍,黄益,陈汉威
- 954 超极速脉搏波技术检测颈动脉硬化程度与原发高血压视网膜病变程度的相关性
何婧,李明星,李友谊,朱雨洁,罗焯,胡卫中,侯超,陈晓梅
- 961 多种超声探头联合应用与CT血管造影对锁骨下动脉盗血综合征有较高诊断价值
陈秋月,黄冬花,全强,潘美宇,曾丽丹
- 965 MRI测量前后髌白指数评估儿童髌关节前后髌白发育情况及发育性髌关节发育不良
刘爱宁,闫翠娇,魏华滨,武红蕾,全冠氏
- 969 磁共振动态对比增强扫描定量参数与原发肝癌患者病理特征及缺氧诱导因子-1 α 水平的关系
何承峻,杨小丁,陈海洋

- 974 超声引导下经皮腔内血管成形术在血液透析患者动静脉内瘘狭窄中的应用
刘正亮,李秀勇,张继强
- 978 弹性模量值诊断早期原发性肾病综合征的价值及其与肾功能指标的相关性
左娟,耿磊,穆春华,侯胜旗,戴丽,杨伏猛
- 983 SPECT/CT骨定量SUV_{max}分析在老年前列腺癌骨转移中的鉴别诊断价值
翟威豪,何薇
- 988 高频超声对类风湿性关节炎患者腕、指关节病变的诊断价值
李隽华,汪巧荣,焦志欣
- 992 低剂量计算机断层摄影血管造影术与数字减影血管造影对冠状动脉中重度狭窄诊断的对比
黎嘉卿,谭理连,梁健华,张紫盛
- 997 超声引导微创旋切术对乳腺纤维瘤患者疼痛及乳房外观的影响
张凤,代梦霜,胡大燕,贾婷婷,付再碧
- 1002 乳腺癌二维超声、彩色多普勒血流显像、剪切波弹性成像、造影参数联合评估与病理对照
高曼丽,蔡芹芹,包迪,谢晴晴,刘辉,乔薇
- 1007 18~30岁女性乳腺癌的4种分子亚型与影像学特征的相关性
符青云,欧阳小明,邝程,何凯宁
- 1013 听性脑干诱发反应消失听力损失患儿临床特征及内耳MR特征
侯超,李琰
- 1017 宫颈神经内分泌癌的预后因素
刘倩倩,汪洋,马安娜,张书旭,陈历排

综述

- 1024 单指数、双指数及拉伸指数模型扩散加权成像在卵巢肿瘤及子宫内膜癌中的应用进展
刘艳美,王倩倩,侯聪,杨慧敏,姜兴岳,刘新疆
- 1029 弥散张量成像技术在卒中后抑郁疾病中的应用进展
原亚利,刘勇,李选,姚妮,宫晓洋,高玉玲
- 1034 多模态超声联合深度学习对乳腺癌新辅助化疗疗效及侵袭性评价的研究进展
刘锦辉,冷晓玲
- 1041 可视化荧光成像技术的胸部外科应用
鲍峰,李子煜,元及,吴宗阳

总编辑:陈望忠

本期责任编辑:林萍

本期责任校对:孙昌朋,郎朗

期刊基本参数:CN 44-1630/R*1977*b*A4*160*zh+en*P* ¥ 22.00*1000*31*2021-11

出版日期:2021-11-20

FENZI YINGXIANGXUE ZAZHI

Journal of Molecular Imaging

Volume 44 Number 6 November 2021

Contents

Clinical Research

- 885 Diagnostic value of diffusion tensor imaging parameters after ratio in cervical spondylotic myelopathy
YAO Ruixin, GUO Huili, ZHANG Binqing, YE Yanjun
- 892 Value of diffusion tensor imaging in the diagnosis and prognosis of neonatal hypoxic-ischemic encephalopathy
WEI Huabin, YAN Cuijiao, LIU Aining, QUAN Guanmin
- 900 Correlation of coronal features of automatic breast volume and Ki67 and C-erbB-2 in breast cancer
HUANG Si, XIAO Yaocheng, LI Jian, ZUO Wensi
- 905 Dual-modal imaging of nano-imaging probes based on metal gadolinium-catechol in mice
LIU Jie, WANG Yuzhu
- 911 Efficacy of different cut-off values of Kaiser score in MRI diagnosis of breast lesions
YI Xi, WANG Guiliang, MA Rong, ZENG Yuli, CHEN Ying, FAN Zhihong
- 917 Application of ultrasound-guided percutaneous drainage catheterization for moderately severe acute pancreatitis
MA Li, LI Xiaofeng, XIONG Ran, LI Hailiang, ZENG Jie, LIU Hongmei
- 922 MRI findings of hepatobiliary phase doughnut-like nodules in Gd-EOB-DTPA and their relationship with cholestasis
ZHANG Guirong, ZHANG Yanyan, ZHANG Bo, DING Dun, YANG Quanxin, SUN Honghong
- 927 Value of diffusion weighted magnetic resonance imaging combined with three-dimensional digital tomography in differential diagnosis of benign and malignant calcified lesions of breast
WANG Yi, HUANG Meiling, CAI Siqing, LAI Qingquan, WU Hong, HUANG Qiming
- 932 Effectiveness of magnetic resonance imaging-transrectal ultrasound-guided cognitive fusion targeted prostate biopsy combined with systematic prostate biopsy for prostate cancer patients with PSA Level 4-20 ng/mL
LU Jianfei, FENG Lei, BU Rui, WEI Hairong, LIU Xiaoyan, ZHANG Ran
- 937 Clinical value of two-dimensional echocardiography in evaluating the severity of non-ST-segment elevation myocardial infarction in the elderly
ZHOU Chunmei, FAN Limin, XIE Yang, WU Yin
- 941 Clinical features and MRI images of patients with temporomandibular joint disorders
GUAN Xiaohui, WEI Huiping, LI Chuan, HUANG Tao
- 945 Application value of preoperative enhanced multi-slice spiral CT scan in the surgical treatment for elderly patients with non-small cell lung cancer
LI Rulin, ZHANG Huiling, ZHOU Dewei, LIN Zhiwu, FAN Jiangang
- 950 Evaluation of nasopharyngeal image quality from the ZOOMit DWI and RESOLVE DWI techniques
GUO Guangyuan, YE Yufeng, DENG Wei, LIANG Qiwei, GUO Yanping, HUANG Yi, CHEN Hanwei
- 954 Correlation between carotid arteriosclerosis by ultrafast pulse wave velocity technology and retinopathy in patients with essential hypertension
HE Jing, LI Mingxing, LI Youyi, ZHU Yujie, LUO Ye, HU Weizhong, HOU Chao, CHEN Xiaomei
- 961 Diagnostic value of combined application of multiple ultrasound probes and CT angiography in subclavian steal syndrome
CHEN Qiuyue, HUANG Donghua, QUAN Qiang, PAN Meiyu, ZENG Lidan
- 965 Evaluation of acetabular development and risk factors of DDH in children by acetabular index before and after MRI measurement
LIU Aining, YAN Cuijiao, WEI Huabin, WU Honglei, QUAN Guanmin
- 969 Relationship between DCE-MRI quantitative parameters and HIF-1 α levels in patients with primary hepatocellular carcinoma
HE Chengjun, YANG Xiaoding, CHEN Haiyang

- 974 Application of ultrasound guided percutaneous transluminal angioplasty on arteriovenous fistula stenosis in hemodialysis patients
LIU Zhengliang, LI Xiuyong, ZHANG Jiqiang
- 978 Application value of elastic modulus in diagnosis of early primary nephrotic syndrome and its correlation with renal function indexes
ZUO Juan, GENG Lei, MU Chunhua, HOU Shengqi, DAI Li, YANG Fumeng
- 983 Differential diagnosis value of SPECT/CT bone quantitative SUV_{max} analysis in the bone metastases of elderly prostate cancer patients
ZHAI Weihao, HE Wei
- 988 Diagnostic value of high frequency ultrasound for wrist and knuckle lesions in patients with rheumatoid arthritis
LI Dihua, WANG Qiaorong, JIAO Zhixin
- 992 Comparison of low-dose computerized tomography angiography and digital subtraction angiography under the guidance of BMI in the diagnosis of moderate to severe coronary stenosis
LI Jiaqing, TAN Lilian, LIANG Jianhua, ZHANG Zisheng
- 997 Effects of ultrasound-guided minimally invasive arthroscopy on pain and breast appearance in patients with breast fibroma
ZHANG Feng, DAI Mengshuang, HU Dayan, JIA Tingting, FU Zaibi
- 1002 Evaluation of ultrasound multiple parameters (two-dimensional, color Doppler flow imaging, shear wave elastography, contrast-enhanced imaging) in breast cancer versus pathological control
GAO Manli, CAI Qinqin, BAO Di, XIE Qingqing, LIU Hui, QIAO Wei
- 1007 Correlation between molecular subtypes and imaging features of breast cancer in women aged 18-30 years
FU Qingyun, OUYANG Xiaoming, ZHI Cheng, HE Kaining
- 1013 Clinical characteristics and inner ear MR features in children with absent auditory brainstem response
HOU Chao, LI Yan
- 1017 Prognostic factors of neuroendocrine carcinoma of the cervix: a retrospective study
LIU Qianqian, WANG Yang, MA Anna, ZHANG Shuxu, CHEN Lipai

Review

- 1024 Application of diffusion weighted imaging with monoexponential, biexponential and tensile exponential models in ovarian tumors and endometrial cancer
LIU Yanmei, WANG Qianqian, HOU Cong, YANG Huimin, JIANG Xingyue, LIU Xinjiang
- 1029 Application progress of diffusion tensor imaging in post-stroke depression
YUAN Yali, LIU Yong, LI Xuan, YAO Wei, GONG Xiaoyang, GAO Yuling
- 1034 Research progress of multimodal ultrasound combined with deep learning in the evaluation of the efficacy of neoadjuvant chemotherapy and invasiveness for breast cancer
LIU Jinhui, LENG Xiaoling
- 1041 Application of visual fluorescence imaging in thoracic surgery
BAO Feng, LI Ziyu, YUAN Ji, WU Zongyang

Editorial Director: CHEN Wangzhong

Executive Editor: LIN Ping

Executive Proofreaders: SUN Changpeng, LANG Lang

Publication Date: 2021-11-20