



ISSN 1674-6929
CN 44-1656/R
邮发代号: 46-283

分子诊断与治疗杂志

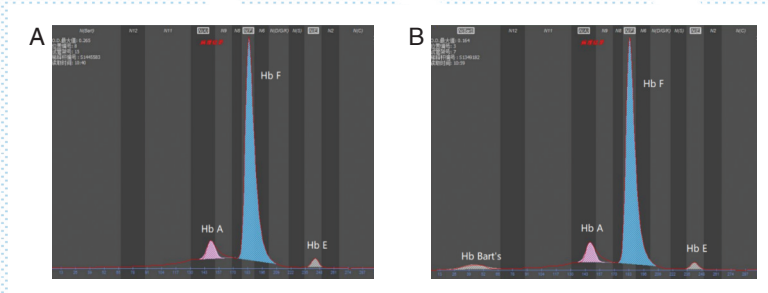
FENZI ZHENDUAN YU ZHILIAO ZAZHI

2023年7月 第15卷 第7期 总第107期

JOURNAL OF

MOLECULAR DIAGNOSTICS AND THERAPY

Volume 15 Number 7 July 2023



注: A. 单纯Hb E病例, 出现Hb E条带。B. Hb E合并 α 地中海贫血病例, 同时出现Hb E和Hb Bart's条带。

图(1141) 单纯Hb E病例与Hb E合并 α 地中海贫血病例的毛细管电泳图比较

Figure (1141) Capillary electrophoretic diagram of Hb E and Hb E with α -thalassemia

中山大学 主管

中国科技核心期刊(中国科技论文统计源期刊)

中国核心期刊(遴选)数据库收录期刊

中国期刊全文数据库全文必录期刊

中国学术期刊综合评价数据库统计源期刊

中文生物医学期刊文献数据库CMCC收录期刊

中国生物医学期刊引文数据库CMCI收录期刊

中国学术期刊影响因子年报统计源期刊

ISSN 1674-6929



分子诊断与治疗杂志

二〇二三年七月

第十五卷 第七期

中山大学

分子诊断与治疗杂志

月刊 2023年7月 第15卷 第7期

目次

述评

钙网蛋白在胃癌中的研究进展 吴春梅 李秋燕 曾涛(1095)

论著

高危型HPV阳性患者血清 *lncRNA SNHG8* 表达对宫颈癌的预测价值
..... 黄永杰 王桂珍 吕朋举 等(1099)

血清 sST2 和 IL-10 检测诊断急性呼吸窘迫综合征的临床价值 王莹 向珊 陈俊华 等(1103)

阿莫西林克拉维酸钾辅助治疗过敏性紫癜的疗效观察及对相关炎症因子表达的影响
..... 安永涛 高睿迪 方险峰(1108)

围绝经期PFD患者阴道脱落细胞成熟度、E2和25-(OH)-D与 *LGR7* mRNA 的关系
..... 王小燕 勾明月 李云芳(1112)

多元化管理模式对高尿酸血症患者糖脂代谢及Hcy水平的影响
..... 王婷 刘晓艳 常月霞 等(1116)

CA125、hs-CRP及Hcy检测在急性心衰诊断、近期预后中的评估 刘金成 陈东 李佳 等(1121)

重症肺炎患儿血清H-FABP、CK-MB和NT-proBNP水平对评价心肌损伤的临床意义
..... 闫焕利 闫瑞雪 彭富栋 等(1125)

RDW、MAU、cTnI检测在慢性心力衰竭早期诊断、心功能评估中的应用
..... 陈智 秦小敏 李四荣 等(1129)

急性脑梗死患者时间窗内行血管内介入治疗前后血清自噬相关蛋白的检测及临床价值
..... 李森 姜永亮 潘磊(1133)

佛山地区55例新生儿血红蛋白E合并地中海贫血病例的基因型和血液型特征分析
..... 林粤 周万军 余丰 等(1138)

同种异体骨移植辅助PRP技术对Hepple V型距骨骨软骨损伤患者短期效果及TGF- β 1、PDGF、VEGF的影响 崔亮 杨宗宇 魏余晋 等(1142)

术前NLR、PLR、RDW检测对结直肠癌预后及复发转移的应用价值 王伟 彭军瑞 韩丽(1147)

阿替普酶联合华法林和低分子肝素对急性肺栓塞患者凝血功能、血管内皮功能、血清指标的影响
..... 张建新 石金河 陈希妍 等(1151)

血清碱性磷酸酶联合全段甲状旁腺激素对血液透析患者主要不良心血管事件的预测价值
..... 石柳平 许丽 陈玲(1156)

IL-17、IL-12p70在宫颈癌组织中的表达及与临床病理特征和预后的关系
..... 徐双喜 朱长东 朱成苗 等(1160)

DWI联合BNP、CysC及LDH检测在急性脑梗死预后判断中的作用
..... 郭咏娣 武剑 宋晓微(1164)

外周血T淋巴细胞亚群、CD147及VWF水平与短暂性脑缺血发作患者早期临床转归的关系
..... 宋伟伟 刘景峰 段丽娟 等(1169)

家族性噬血细胞综合征临床特征及基因突变分析 周百灵 黄体龙 庄宇 等(1173)

SGLT-2 抑制剂降低心力衰竭患者心房颤动的作用及其影响因素	周丽丽 杨媛媛 周妮(1178)
DDR1 对结直肠癌侵袭和上皮细胞间质转化的影响	任清霞 田斌 苏彤 等(1182)
血清 sTREM-1、KL-6、和肽素水平与儿童重症肺炎及其预后的关系	陈小妮 付亚芳 李缓 等(1187)
IL-6、SDF-1、ET 与急性脑梗死患者 rt-PA 静脉溶栓后预后的关系	韩泉 魏莱 胡彩英(1191)
AECOPD 合并高碳酸血症患者血清 SUA、SCr、 β 2-MG 表达水平及临床意义	朱海波 苏永峰 蒋亚林(1195)
血清 Hey、ADAM10、Gal-3 与 2 型糖尿病患者颈动脉粥样硬化的相关性	李丽莉 薛云松 李奕平 等(1199)
NLR、D-D、MLR 评估重症肺炎患者病情严重程度及预后的价值	杨丽莎 王艳平 李淑娇 等(1203)
粪便 FC 蛋白联合血清 CA125、CRP 对溃疡性结肠炎患者的预后评估	孙邦英 姜文 程红宇 等(1207)
益气疏风汤联合针灸治疗慢性荨麻疹的效果及其对血清 IgE、IL-31、IL-33 的影响	周东东 陈为星 朱才丰(1212)
深圳学龄前孤独症谱系障碍儿童微量元素水平及其饮食行为的相关性	孙娅男 周子晴 郝雯琪 等(1216)
不同胎龄早产儿颅内出血 PT、APTT、DD、FIB 水平与颅内出血的相关性研究	闫学爽 肖娜娜 陈源 等(1221)
舒芬太尼静脉自控镇痛对宫颈癌术后患者疼痛及应激反应的影响	孟明华 邹长玲 吕慎娟 等(1225)
CTA 与 3D CE-MRA 对糖尿病足患者下肢动脉硬化病变的诊断价值	周莉 刘芝克 董景宣 等(1229)
CK20、P53、Ki67 蛋白联合影像学特征与结肠癌分化程度及预后的关系	宋丹丹 王超 李军 等(1234)
血清 Ang II、apoB/apoA-1 联合 endocan 对高血压患者并发冠心病的预测价值	董丹萍 谢芳 热衣拉·买买提 等(1238)
2019—2021 年北京北苑地区流感病毒流行特征分析	李晶 张成龙 何宗辉 等(1243)
464 例广西人群 miR-365 基因 rs30230C/T 遗传多态性研究	翁银花 陈杰 谷嬉嬉 等(1247)
VEGF-C、Ki-67 及 PTEN 在皮肤恶性黑色素瘤患者中的表达及临床意义	李杨 李启松 丁聪玲 等(1252)
布拉氏酵母菌联合柳氮磺吡啶栓对直肠型 UC 患者 Baron 内镜评分及肠黏膜屏障功能的影响	唐闯 张鑫 蔡涛 等(1256)
rhIL-11 联合利妥昔单抗克隆抗体对免疫性血小板减少症患者 NK 细胞、色氨酸代谢的影响	于艺冰 张琳 孔艳 等(1261)
阿加曲班联合阿司匹林用于急性脑梗死患者的临床效果	王海虹 赵传清 李亚(1265)
<i>Fascin-1</i> mRNA 联合肿瘤标志物对结直肠腺癌患者术后淋巴结转移和生存预后的评估价值	祁真玉 曹辉 张志苏 等(1270)
脑梗死患者 Cys-C、UA 及 Hey 水平与预后相关性分析	韦先锋 李静 王硕(1275)

综 述

铁死亡调控机制治疗乳腺癌的研究进展	方宇辰 徐忆苏 许馨文 等(1279)
-------------------------	---------------------

专家风采

李太生	(封二)
-----------	------

实验室巡礼

中国医学科学院北京协和医院感染内科实验室	(封三)
----------------------------	------

JOURNAL OF MOLECULAR DIAGNOSTICS AND THERAPY

Monthly Volume 15 Number 7 July 2023

CONTENTS

COMMENTS

- Research progress of calreticulin in gastric cancer
WU Chunmei, LI Qiuyan, ZENG Tao (1095)

ORIGINAL ARTICLES

- Predictive value of serum *lncRNA SNHG8* expression for cervical cancer in high-risk HPV-positive patients
HUANG Yongjie, WANG Guizhen, LV Pengju, ZHANG Chunyan (1099)
- The clinical value of serum sST2 and IL-10 in the diagnosis of acute respiratory distress syndrome
WANG Ying, XIANG Shan, CHEN Junhua, YIN Xueyu, CHEN Huixue (1103)
- Efficacy of Amoxicillin clavulanate potassium in the adjuvant treatment of Henoch-Schonlein Purpura and its effect on the expression of related inflammatory factors
AN Yongtao, GAO Ruidi, FANG Xianfeng (1108)
- Relationship of vaginal exfoliated cell maturity, E2 and 25-(OH)-D with *LGR7* mRNA in patients with perimenopausal PFD
WANG Xiaoyan, GOU Mingyue, LI Yunfang (1112)
- Effect of diversified management mode on glucolipid metabolism and Hcy level in patients with hyperuricemia
WANG Ting, LIU Xiaoyan, CHANG Yuexia, MA Wei (1116)
- Role of CA125, hs-CRP and Hcy in diagnosis and short-term prognosis assessment of acute heart failure
LIU Jincheng, CHEN Dong, LI Jia, ZHANG Sheng, ZHANG Yingbao, WANG Bin (1121)
- Clinical significance of serum H-FABP, CK-MB and NT-proBNP levels in children with severe pneumonia in evaluating myocardial damage
YAN Huanli, YAN Ruixue, PENG Fudong, LI Hongshuang, SHI Jing (1125)
- Application of RDW, MAU, and cTnI detection in early diagnosis and cardiac function evaluation of chronic heart failure
CHEN Zhi, QIN Xiaomin, LI Sirong, WANG Lilan (1129)
- Detection and clinical value of serum autophagy related protein in patients with acute cerebral infarction before and after intravascular interventional therapy within the time window
LI Sen, JIANG Yongliang, PAN Lei (1133)
- Genotype and blood type characteristics of 55 neonatal hemoglobin E combined with thalassemia cases in Foshan area
LIN Yue, ZHOU Wanjun, YU Feng, ZHANG Pengyi, LIU Haiping, YU Nan (1138)
- Effects of allograft bone grafting assisted PRP technique on short-term effect and TGF- β 1, PDG, VEGF values in patients with Hepple V type talus osteochondral injury
CUI Liang, YANG Zongyu, WEI Yujin, TAO Shiwu, SUN Guochang, LI Pengwei, FENG Nana, LIU Fei, FAN Huanhuan (1142)
- The value of preoperative NLR, PLR, and RDW detection in the prognosis, recurrence, and metastasis of colorectal cancer
WANG Wei, PENG Junrui, HAN Li (1147)
- Effect of alteplase combined with warfarin and low molecular weight heparin on coagulation function, vascular endothelial function and serum indicators in patients with acute pulmonary embolism
ZHANG Jianxin, SHI Jinhe, CHEN Xiyan, LI Guangpeng, ZHAI Shicong, CUI Junwei (1151)
- Predictive value of serum alkaline phosphatase combined with total parathyroid hormone for major adverse cardiovascular events in hemodialysis patients
SHI Liuping, XU Li, CHEN Ling, YAN Hai (1156)
- Expression of IL-17 and IL-12p70 in cervical cancer tissues and their correlation with clinicopathological features and prognosis
XU Shuangxi, ZHU Changdong, ZHU Chengmiao, WANG Xiangyan (1160)
- The role of DWI combined with detection of BNP, CysC and LDH in judging the prognosis of acute cerebral infarction
GUO Yongdi, WU Jian, SONG Xiaowei (1164)
- Relationship between peripheral blood T lymphocyte subsets, CD147 and VWF levels and early clinical outcome in patients with transient ischemic attack
SONG Weiwei, LIU Jingfeng, DUAN Lijuan, ZHANG Linlin, YUAN Xuemei (1169)

Clinical features and gene mutation analysis of familial hemophagocytic lymphohistiocytosis <i>ZHOU Bailing, HUANG Tulong, ZHUANG Yu, SHI Shulan, ZHAO Guangzhou, XIA Shimei, KUI Liyue</i>	(1173)
Effect of SGLT-2 inhibitors on atrial fibrillation in patients with heart failure and its influencing factors <i>ZHOU Lili, YANG Yuanyuan, ZHOU Ni</i>	(1178)
Effect of DDR1 on invasion and epithelial-mesenchymal transition of colorectal cancer <i>REN Qingxia, TIAN Bin, SU Tong, SUN Liangchen</i>	(1182)
Relationship between serum sTREM-1, KL-6 and copeptin levels in children with severe pneumonia and their prognosis <i>CHEN Xiaoni, FU Yafang, LI Huan, SUN Aili</i>	(1187)
Relationship between IL-6, SDF-1, ET and prognosis of rt-PA in patients with acute cerebral infarction after intravenous thrombolysis <i>HAN Quan, WEI Lai, HU Caiying</i>	(1191)
The expression levels and clinical significance of serum SUA, SCr and β 2-MG in patients with AECOPD complicated with hypercapnia <i>ZHU Haibo, SU Yongfeng, JIANG Yalin</i>	(1195)
Correlation between serum Hcy, ADAM10, Gal-3 and carotid atherosclerosis in patients with type 2 diabetes mellitus <i>LI Lili, XUE Yunsong, LI Yiping, ZHAO Dongyan, LI Yizheng</i>	(1199)
The value of NLR, D-D, and MLR in assessing the severity and prognosis of severe pneumonia patients <i>YANG Lisha, WANG Yanping, LI Shujiao, WEI Heyu</i>	(1203)
The value of fecal FC protein combined with serum CA125 and CRP in predicting prognosis of patients with ulcerative colitis <i>SUN Bangying, JIANG Wen, CHENG Hongyu, SUN Hai, CHEN Xinfeng, QIAN Shaohua, FANG Minghui</i>	(1207)
Effect of Yiqishufeng Decoction combined with acupuncture on chronic urticaria and its influence on serum IgE, IL-31 and IL-33 <i>ZHOU Dongdong, CHEN Weixing, ZHU Caifeng</i>	(1212)
Correlation between trace element levels and dietary behavior of preschool children with autism spectrum disorder in Shenzhen <i>SUN Yanan, ZHOU Ziqing, HAO Wenqi, WEI Fengxiang</i>	(1216)
Study on the correlation between PT, APTT, DD, and FIB levels and intracranial hemorrhage in premature infants with different gestational ages <i>YAN Xueshuang, XIAO Nana, CHEN Yuan, WU Ping, LI Ya, YAN Shijie</i>	(1221)
Effect of sufentanil patient-controlled intravenous analgesia on postoperative pain and stress response in patients with cervical cancer <i>MENG Minghua, ZOU Changling, LV Shenjuan, LI Huimin, LI Zhen</i>	(1225)
Diagnostic value of CTA and 3D CE-MRA on lower extremity atherosclerotic lesions in patients with diabetic foot <i>ZHOU Li, LIU Zhike, DONG Jingxuan, LIU Yijie</i>	(1229)
Relationship between the combined imaging features of CK20, P53 and Ki67 proteins and the degree of differentiation and prognosis of colon cancer <i>SONG Dandan, WANG Chao, LI Jun, WANG Lei</i>	(1234)
The predictive value of serum Ang II, apoB / apoA-1 combined with endocan in hypertensive patients with coronary heart disease <i>DONG Danping, XIE Fang, REYILA·Maimaiti, XU Yurong, GUO Zitong</i>	(1238)
Analysis of influenza virus epidemic characteristics in Beiyuan District of Beijing from 2019 to 2021 <i>LI Jing, ZHANG Chenglong, HE Zhonghui, ZHANG Shuyong, WU Xiuping, QU Fen</i>	(1243)
Genetic polymorphisms of rs30230C/T loci of <i>miR-365</i> gene in 464 cases from Guangxi population <i>WENG Yinhua, CHEN Jie, GU Xixi, LUO Yanping, LIU Chao, LAN Yan, WEI Yesheng</i>	(1247)
Expression and clinical significance of VEGF-C, Ki-67 and PTEN in patients with cutaneous malignant melanoma <i>LI Yang, LI Qisong, DING Congling, WANG Qing</i>	(1252)
Effect of <i>Saccharomyces boulardii</i> combined with salazosulfapyridine suppositories on Baron's endoscopic score and intestinal mucosal barrier function in patients with rectal type UC <i>TANG Chuang, ZHANG Xin, CAI Tao, TONG Xia, ZHANG Tin</i>	(1256)
Effects of rhIL-11 combined with rituximab on NK cells and tryptophan metabolism in patients with immune thrombocytopenia <i>YU Yibing, ZHANG Lin, KONG Yan, WANG Jing, CHEN Chen, LI Fengmin</i>	(1261)
Clinical effect of argatroban combined with aspirin in patients with acute cerebral infarction <i>WANG Haihong, ZHAO Chuanqing, LI Ya</i>	(1265)
Evaluation of <i>Fascin-1</i> mRNA combined with tumor markers for postoperative lymph node metastasis and survival prognosis in patients with colorectal adenocarcinoma <i>QI Zhenyu, CAO Hui, ZHANG Zhisu, WANG Jianxun</i>	(1270)
Correlation of Cys-C, UA and Hcy levels and prognosis in patients with cerebral infarction <i>WEI Xianfeng, LI Jing, WANG Shuo</i>	(1275)

REVIEWS

Research progress of ferroptosis regulation mechanism in the treatment of breast cancer <i>FANG Yuchen, XU Yisu, XU Xinwen, TANG Jingjing, ZHOU Junzhen, ZHANG Qing, LI Qiang, JIANG Jianwei</i>	(1279)
---	--------

杂志简介:

《分子诊断与治疗杂志》于 2009 年 5 月创刊，是由中山大学主管，《中国家庭医生》杂志社有限公司主办，广州达安基因股份有限公司承办的面向国内外公开发行的分子医学权威性刊物，也是我国第一份以分子诊断与治疗学科为主要内容的分子医学专业学术期刊。本刊以传播分子医学理念、报道分子医学前沿、倡导分子医学创新、促进分子医学进步为办刊宗旨。主要刊登我国医学分子诊断和分子治疗相关领域中的基础理论研究、临床实践和技术方法的最新研究成果以及国内分子医学新技术、新理论和新进展等方面的文章。目前有编委及审稿专家 80 余人。在编委会和审稿专家及编辑部的共同努力下，于 2016 年被收录为“中国科技核心期刊”（中国科技论文统计源期刊）。

目前有“述评”、“论著”、“综述”、“前沿进展”、“专家笔谈”、“讲座”、“动态”和“专栏”等栏目。涵盖基因诊断、免疫诊断、核酸分子诊断、蛋白分子诊断、信号分子诊断、分子影像诊断、诊断仪器应用、基因治疗、核酸分子治疗、蛋白分子治疗等内容。



地址：广州市科学城荔枝山路 6 号
稿件查询：020-32290789 转 206
其它业务查询：020-32290789 转 201

投稿网址：<http://yxyq.cbpt.cnki.net>
业务查询邮箱：jmdt@vip.163.com