



ISSN 1674-6929
CN 44-1656/R
邮发代号: 46-283

分子诊断与治疗杂志

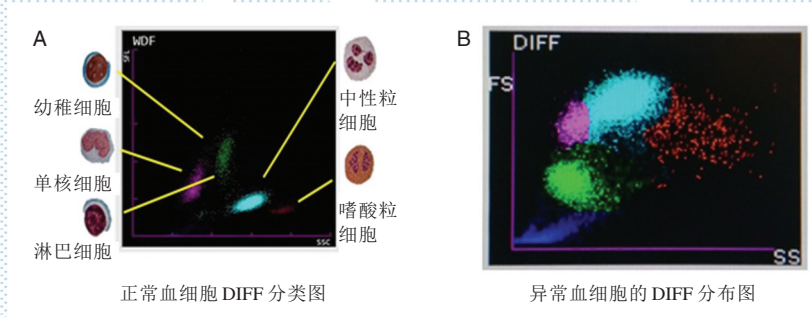
FENZI ZHENDUAN YU ZHILIAO ZAZHI

2023年9月 第15卷 第9期 总第109期

JOURNAL OF

MOLECULAR DIAGNOSTICS AND THERAPY

Volume 15 Number 9 September 2023



注:当血液细胞分析仪检测到异常细胞时,中性粒细胞区域扩大,和单核细胞区有重叠,淋巴细胞区增大,嗜酸细胞区域扩大。

图(1589) 正常血细胞及异常血细胞 DIFF 分类图示例(瑞氏染色,×40)

Figure (1589) Example of DIFF classification map for normal and abnormal blood cells (瑞氏染色,×40)

中山大学 主管

中国科技核心期刊(中国科技论文统计源期刊)
中国核心期刊(遴选)数据库收录期刊
中国期刊全文数据库全文必录期刊
中国学术期刊综合评价数据库统计源期刊
中文生物医学期刊文献数据库 CMCC 收录期刊
中国生物医学期刊引文数据库 CMCI 收录期刊
中国学术期刊影响因子年报统计源期刊

ISSN 1674-6929



分子诊断与治疗杂志

月刊 2023年9月 第15卷 第9期

目次

述评

结核病分子检测靶标研究进展 朱银银 张洪英(1469)

论著

基于多重PCR靶向测序技术建立临床病原菌检测方法 黄晓园 郑凯文 张俊杰 等(1473)

鼻内镜鼻后神经分支切断对CSNP伴AR的疗效及TNF- α 、IL-18的影响

..... 何金强 吴俊 方玉香(1478)

甘油三酯-葡萄糖指数及其衍生指数对急性心衰患者心衰易损期预后的影响

..... 夏冬梅 张宁 宁彬 等(1483)

血清HMGB1、Alb和NLR对脑卒中恢复期肌少症的诊断价值 武磊 董卫青 张国梁 等(1487)

C-*erbB*-2和C-*MYC*基因在非小细胞肺癌中的表达及其与预后的关系

..... 蒲发晓 任婷远 王雁 等(1492)

血液灌流联合序贯透析治疗终末期肾脏疾病MDA、KT/V及Hb水平变化分析

..... 孙丽悦 王兰香 张颖 等(1496)

尿酸、同型半胱氨酸及血脂水平在结直肠息肉患者中的变化及影响因素分析

..... 孙海兵 陈敏 费梦雪(1501)

狼疮性肾炎患者外周血*miR*-1-5p表达与Th17/Treg平衡的相关性及临床意义

..... 韩志峰 岳璐玉 韩东(1505)

血清ALP、BUN及LDL-C水平与中老年高血压患者血压节律及MACE的关系

..... 王萍玉 张秀娟 宋玉珠(1510)

血清Galectin-9、CXCL10对急性心肌梗死患者急诊PCI术后慢血流现象的预测效能

..... 顾冬冬 程键 孔菲菲 等(1515)

血液透析液中碳酸氢根检测方法的优化与改进 叶晓燕 陈华燕 黄麒谕 等(1520)

*STAT3*调控炎症因子分泌抑制脑梗死细胞凋亡机制研究 贾丹丹 陈蓉 马琳 等(1524)

PCT、ET联合LPS检测在尿石症冲击波碎石术后尿路感染中的诊断价值

..... 周佳凝 樊羽飞 侯彩云(1530)

肾功能衰竭患者血清PTH、Cys-C、FER表达情况及与病情严重程度的相关性

..... 左永 郑艳丹(1534)

血清CEA、NSE、ProgRP、CYFRA21-1在孤立性肺结节中的变化及影响因素分析

..... 李道航 邓伟明 左磊 等(1538)

超声心动图联合胆红素、Lpa及Hcy检测在冠心病中的诊断价值

..... 刘宇 黄发基 魏佳 等(1543)

腹腔镜腋窝淋巴结清扫术对早期乳腺癌患者的治疗效果 孙丽 岂怀华 王晶 等(1547)

BNP、sTREM-1及Hcy检测评估心力衰竭患者左心功能作用分析 刘卫永 张莉 杨帆(1552)

TSH、D-二聚体及UA与T2DM患者颈动脉粥样硬化的关系 张竹君 潘庆丰 马军民 等(1556)

血清炎性指标联合 APACHEII 评分对重症肺部感染患者生存预后的预测价值
 袁志会 井慎 王亮亮(1560)

痰热清注射液治疗对有创呼吸机下肺感染并发呼吸衰竭患者肺功能及 WBC、CRP、PCT 水平的影
 吴桂云 戴慧 赵婉丽(1565)

单孔胸腔镜肺癌根治术治疗早期 NSCLC 对应激反应指标、*miR-20a*、*TOP2A* 的影响
 梁建伟 曹兵 王晨 等(1569)

血清 *miR-28-3p*、*miR-23a* 与非小细胞肺癌射频消融治疗患者预后生存的关系
 乔玲 牛倩倩 郑梦瑶(1574)

血清 FGF-23、IGF-1、SH 指数与维持性血液透析患者营养不良的相关性及预测价值
 张玲 刘莉 王娜娜(1579)

玉屏风联合糖皮质激素治疗过敏性紫癜的疗效观察以及对相关炎症因子表达的影响
 朱洁丽 姬静静 方险锋 等(1583)

血细胞直方图联合血液涂片分析在疟疾诊断中的应用 刘文雄 邱明好 毛远科 等(1587)

子宫肌瘤孕妇无创产前 DNA 检测的结果分析 谢平霖 陈培松 余学高 等(1591)

血栓弹力图联合血小板计数用于指导创伤性失血患者血浆输注中的临床效果
 庞辉 王小影 张健(1595)

缺血性脑卒中患者治疗后血脂、NLR 及 HCY 水平与发生认知功能障碍的相关性
 吴玉燕 沈志龙 汪彬(1599)

尿毒症患者肺泡灌洗液 SIRT1、IL-19 的表达对肺功能预测评估价值 程建猛 万玉峰(1603)

升麻葛根汤治疗猴痘的网络药理学研究及分子对接验证 吴林军 岳保红(1607)

醋酸亮丙瑞林对特发性中枢性早熟女童血清 IGF-1、IGFBP-3 水平的影响
 王显敏 陈云鸿 曾钰 等(1613)

黄连温胆汤联合前列地尔对脑梗死合并糖尿病患者的疗效及 sICAM-1 的影响
 江应露 尹加亮 李学军(1618)

MTA1、PTEN、PD-L1 检测在老年肺癌患者术前分期及淋巴结转移中的临床价值
 赵曦雯 张玉梅 刘慧(1622)

新生儿败血症 PCT、hs-CRP、IL-6 表达水平与疾病严重程度的关系及其对患儿并发化脓性脑膜炎
 的预测价值 方飞 李云 顾涛(1627)

新生儿高胆红素血症与 *UGT1A1* 基因突变的关系研究 冯芝 王程锋 贺权 等(1632)

经脐单孔腹腔镜治疗小儿复杂性阑尾炎 IL-6、Cor 及 ACTH 的影响
 王祎波 胡江涛 张小坤(1636)

cAMP/PKA-pCREB 信号通路在早期康复训练改善脑卒中患者神经功能中的作用
 孙小星 顾玉玲 陈文雅 等(1641)

丁苯酞联合左乙拉西坦治疗脑卒中后继发性癫痫的效果 王少津 陈海荣 潘碧云(1646)

血乳酸、心肌酶谱、hs-cTnT 对体外循环心脏手术患者预后的影响 黄慧 张良 赵刚 等(1650)

血清 *miR-152*、*miR-153* 和 *miR-203* 在宫颈上皮内病变中的表达及临床意义
 胡引男 祝茹 吴秀秀 等(1654)

综 述

提高 PCOS 患者的临床诊疗:在脂质组学中寻找新突破 章婷萍 段佳佳 刘传鑫 等(1658)

专家风采

王敏 (封二)

实验室巡礼

长沙市第一医院(中南大学湘雅医学院附属长沙医院) (封三)

JOURNAL OF MOLECULAR DIAGNOSTICS AND THERAPY

Monthly Volume 15 Number 9 September 2023

CONTENTS

COMMENTS

- Advances in research on molecular targets for tuberculosis detection
ZHU Yinyin, ZHANG Hongying (1469)

ORIGINAL ARTICLES

- Establishment of clinical pathogen detection method based on multiplex PCR-targeted sequencing technology
HUANG Xiaoyuan, ZHENG Kaiwen, ZHANG Junjie, XU Hongxu, WANG Jufang (1473)
- The therapeutic effect of endoscopic resection of posterior nasal nerve branches on CSNP with AR and the influence of TNF- α , IL-18
HE Jinqiang, WU Jun, FANG Yuxiang (1478)
- Effect of triglyceride-glucose index and its derivative index on the prognosis of patients with acute heart failure in the vulnerable period of heart failure
XIA Dongmei, ZHANG Ning, NING Bin (1483)
- Diagnostic value of serum HMGB1, Alb and NLR in sarcopenia during convalescence of stroke
WU Lei, DONG Weiqing, ZHANG Guoliang, YANG Na (1487)
- Expression of C-erbB-2 and C-MYC in non-small cell lung cancer and their relationship with the prognosis
PU Faxiao, REN Tingyuan, WANG Yan, JIANG Xuanxing (1492)
- Analysis of MDA, KT/V, and Hb levels in patients with end-stage renal disease treated with hemoperfusion combined with sequential dialysis
SUN Liyue, WANG Lanxiang, ZHANG Ying, ZHANG Xiyou (1496)
- Changes and influencing factors of uric acid, homocysteine and blood lipid levels in patients with colorectal polyps
SUN Haibing, CHEN Min, FEI Mengxue (1501)
- Correlation between *miR-1-5p* expression and Th17/Treg balance in peripheral blood of patients with lupus nephritis and the clinical significance
HAN Zhifeng, YUE Luyu, HAN Dong (1505)
- Relationship between the levels of serum ALP, BUN and LDL-C and blood pressure rhythm and MACE in middle-aged and elderly patients with hypertension
WANG Pingyu, ZHANG Xiujuan, SONG Yuzhu (1510)
- Predictive effect of serum galectin-9 and CXCL10 on slow blood flow in patients with acute myocardial infarction after emergency PCI
GU Dongdong, CHENG Jian, KONG Feifei, WU Haiyan, LIU Yufei (1515)
- Optimization and improvement of detection method for bicarbonate in hemodialysis fluid
YE Xiaoyan, CHEN Huayan, HUANG Qiyu, HE Xiaofan, XU Chaosheng, LIANG Zexin (1520)
- STAT3 inhibits cerebral infarction by regulating inflammatory cytokine secretion
JIA Dandan, CHEN Rong, MA Lin, LI Qifu (1524)
- Value of PCT and ET combined with LPS detection in the diagnosis of urinary tract infection after shock wave lithotripsy for urolithiasis
ZHOU Jianing, FAN Yufei, HOU Caiyun (1530)
- Expression of serum PTH, Cys-C and FER in patients with renal failure and their correlation with disease severity
ZUO Yong, ZHENG Yandan (1534)
- Changes and influencing factors of serum CEA, NSE, ProgRP, and CYFRA21-1 in solitary pulmonary nodules
LI Daohang, DENG Weiming, ZUO Lei, HUANG Yuting (1538)
- Diagnostic value of echocardiography combined with bilirubin, Lpa, and Hcy detection in coronary heart disease
LIU Yu, HUANG Faji, WEI Jia, FANG Jie (1543)
- Effect of endoscopic axillary lymph node dissection on patients with early breast cancer
SUN Li, QI Huaihua, WANG Jing, ZHANG Nan (1547)
- Analysis of the role of BNP, sTREM-1 and Hcy in evaluating left ventricular function in patients with heart failure
LIU Weiyong, ZHANG Li, YANG Fan (1552)
- Relationship between TSH, D-dimer and UA and carotid atherosclerosis in patients with T2DM
ZHANG Zhujun, PAN Qingfeng, MA Junmin, WANG Lei (1556)

Predictive value of serum inflammatory indicators combined with APACHEII score for survival and prognosis of patients with severe pulmonary infection <i>YUAN Zhihui, JING Shen, WANG Liangliang</i>	(1560)
Effects of tanreqing injection treatment on pulmonary function and WBC, CRP, PCT levels in patients with pulmonary infection under invasive ventilator complicated with respiratory failure <i>WU Guiyun, DAI Hui, ZHAO Wanli</i>	(1565)
Effects of single-port thoracoscopic radical resection of lung cancer on stress response indicators, <i>miR-20a</i> and <i>TOP2A</i> in the treatment of early NSCLC <i>LIANG Jianwei, CAO Bing, WANG Chen, DU Zihao</i>	(1569)
Relationship between serum <i>miR-28-3p</i> , <i>miR-23a</i> and the prognosis and survival of non-small cell lung cancer patients treated with radiofrequency ablation <i>QIAO Ling, NIU Qianqian, ZHENG Mengyao</i>	(1574)
Correlation and predictive value of serum FGF-23, IGF-1, and SII index with malnutrition in maintenance hemodialysis patients <i>ZHANG Ling, LIU Li, WANG Nana</i>	(1579)
Observation on the curative effect of Yupingfeng combined with glucocorticoid in the treatment of allergic purpura and its influence on the expression of related inflammatory factors <i>ZHU Jieli, JI Jingjing, FANG Fangfeng, AN Yongtao</i>	(1583)
Application of blood cell histogram combined with blood smear analysis in the diagnosis of malaria <i>LIU Wenxiong, QIU Minghao, MAO Yuanke, MO Shanying, LUO Guolan, LAI Junhua, JIANG Lijun, DR Chaibou Salaou, Ali Chaibou Moctar, Abdel Salam Boukary Saiba</i>	(1587)
Analysis of the results in non-invasive prenatal DNA testing in pregnant woman with uterine myoma <i>XIE Pinglin, CHEN Peisong, YU Xuegao, FANG Bingxiong, ZHUANG Beili</i>	(1591)
Thrombogram combined with platelet count to guide the clinical effect of plasma infusion in patients with traumatic blood loss <i>PANG Hui, WANG Xiaoying, ZHANG Jian</i>	(1595)
Correlation of blood lipids, NLR and HCY levels with the occurrence of cognitive dysfunction in ischaemic stroke patients after treatment <i>WU Yuyan, SHEN Zhilong, WANG Bin</i>	(1599)
Expression of SIRT1 and IL-19 in alveolar lavage fluid of patients with uremia in predicting and evaluating pulmonary function <i>CHENG Jianmeng, WAN Yufeng</i>	(1603)
Network pharmacology research and molecular docking verification of Shengma Gegen Decoction in the treatment of monkeypox <i>WU Linjun, YUE Baohong</i>	(1607)
Effects of leuprolide acetate on serum IGF-1 and IGFBP-3 in girls with idiopathic central precocious puberty <i>WANG Xianmin, CHEN Yunhong, ZENG Yu, CAO Yu</i>	(1613)
Effect of Huanglian Wendan decoction combined with alprostadil on cerebral infarction with diabetes and the influence of SICAM-1 <i>JIANG Yinglu, YIN Jialiang, LI Xuejun</i>	(1618)
Clinical value of MTA1, PTEN and PD-L1 detection in preoperative staging and lymph node metastasis in elderly patients with lung cancer <i>ZHAO Xiwen, ZHANG Yumei, LIU Hui</i>	(1622)
Relationship between PCT, hs-CRP, IL-6 levels and disease severity in neonatal sepsis and their predictive value in children with purulent meningitis <i>FANG Fei, LI Yun, GU Tao</i>	(1627)
Study on the relationship between neonatal hyperbilirubinemia and <i>UGT1A1</i> gene mutation <i>FENG Zhi, WANG Chengfeng, HE Quan, DOU Pengchan</i>	(1632)
Effect of transumbilical single-port laparoscopy on IL-6, Cor and ACTH in children with complicated appendicitis <i>WANG Yibo, HU Jiangtao, ZHANG Xiaokun</i>	(1636)
Role of cAMP/PKA-pCREB signaling pathway in early rehabilitation training to improve neurological function in stroke patients <i>SUN Xiaoxing, GU Yuling, CHEN Wenya, ZHOU Xu, ZHOU Xiaomao, SUN Gongwei</i>	(1641)
Effect of butylphthalide combined with levetiracetam on the treatment of secondary epilepsy after stroke <i>WANG Shaojin, CHEN Hairong, PAN Biyun</i>	(1646)
Effect of blood lactic acid, myocardial enzymes and hs-cTnT on the prognosis of patients undergoing cardiopulmonary bypass cardiac surgery <i>HUANG Hui, ZHANG Liang, ZHAO Gang, LIU Bao, WANG Qinqin, XU Cheng, WANG Chengyang</i>	(1650)
Expression and clinical significance of serum <i>miR-152</i> , <i>miR-153</i> and <i>miR-203</i> in cervical intraepithelial lesions <i>HU Yinnan, ZHU Ru, WU Xiuxiu, GUO Ping</i>	(1654)

REVIEWS

Improving the clinical diagnostic and treatment for PCOS patients: Looking for new breakthroughs in lipidomics <i>ZHANG Tingping, DUAN Jiajia, LIU Chuanxin, JIANG Tao</i>	(1658)
---	--------

杂志简介:

《分子诊断与治疗杂志》于 2009 年 5 月创刊，是由中山大学主管，《中国家庭医生》杂志社有限公司主办，广州达安基因股份有限公司承办的面向国内外公开发行的分子医学权威性刊物，也是我国第一份以分子诊断与治疗学科为主要内容的分子医学专业学术期刊。本刊以传播分子医学理念、报道分子医学前沿、倡导分子医学创新、促进分子医学进步为办刊宗旨。主要刊登我国医学分子诊断和分子治疗相关领域中的基础理论研究、临床实践和技术方法的最新研究成果以及国内分子医学新技术、新理论和新进展等方面的文章。目前有编委及审稿专家 80 余人。在编委会和审稿专家及编辑部的共同努力下，于 2016 年被收录为“中国科技核心期刊”（中国科技论文统计源期刊）。

目前有“述评”、“论著”、“综述”、“前沿进展”、“专家笔谈”、“讲座”、“动态”和“专栏”等栏目。涵盖基因诊断、免疫诊断、核酸分子诊断、蛋白分子诊断、信号分子诊断、分子影像诊断、诊断仪器应用、基因治疗、核酸分子治疗、蛋白分子治疗等内容。



地址：广州市科学城荔枝山路 6 号
稿件查询：020-32290789 转 206
其它业务查询：020-32290789 转 201

投稿网址：<http://yxq.cbpt.cnki.net>
业务查询邮箱：jmdt@vip.163.com