



工程设计与设计

办: 国家机械工业局工程建设中心 中国机械工业勘察设计协会 中国中元国际工程有限公司 CN 11-3914/TU 2014年第11期 总第319期



上海市机电设计研究院有限公司
上海通用汽车有限公司武汉分公司乘用车项目

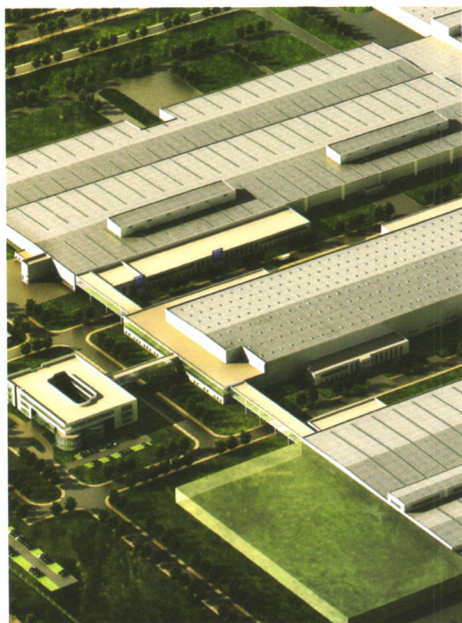
ISSN 1007-9467



9 771007 946103

11 >

万方数据

卷首**05 百年大计 质量第一****动态资讯****06 “国务院出台振兴东北35条政策”等信息23则****特别关注****08 管理创新与设计院的未来****建筑霓虹****12 老宅的精彩蜕变**
——潘祖荫故居(中路后半部及东路)维修整治**信息化****15 在设计院推广三维设计工作的思考****19 数字化手段提升设计效率****天强视点****21 设计院如何基于战略视角构建企业级项目管理体系****ECUC观点****23 校园规划设计中绿色生态及人文理念的贯彻应用**
——上海大学宝山校区扩建规划设计思考**建筑与结构设计**

- 25 空间与环境整合——北京大学新化学楼设计(董振侠)
- 28 静定平面刚架剪力图和弯矩图画法研究(奚立平)
- 31 住宅建筑固体噪声治理实例分析(杨俭, 万叶青, 何平, 郭孝亮, 于洛勇, 马同峰)
- 34 大型钢厂全厂管线综合布置分析与研究(范新库, 胡顺利, 李俊霞)
- 38 现浇钢筋混凝土空心楼盖结构设计在某数据机房工程中的运用(孙必祥, 张兴清, 刘遥, 卿展波)
- 43 基于拉索初始缺陷长度的影响矩阵法(章传胜)
- 48 从居住区规划要点看北京城市内增集约型发展(杨华, 张英琦)
- 51 长沙某超高层住宅楼结构分析与设计(毕朝阳, 冯克, 苏云鹏)
- 57 中小城市高层建筑规划布局浅析(邓竹松)

基础工程设计

- 60 泰安某岩质高边坡综合治理与坡面绿化设计方案探讨(李新华, 王涛)
- 63 灌注桩后注浆在伊泽矿业圆形储煤场项目中的应用(曾荣)
- 67 天津地区确定静压预制桩单桩竖向承载力的探讨(唐伯华)

公用工程设计

- 69 PE-RT II管材和PE-Xa管材选择研究(郑应平, 杨帆)
- 72 高压电气设备绝缘安装的必要性及实施方式探讨(钟毅)
- 75 舢装码头的电气设计(赵亮)
- 78 城市隧道给排水设计问题探讨(刘猛, 郭增辉)
- 80 烟气脱硫后6kV负荷计算及厂用电抗器核算(王磊, 侯永刚)

市政·交通·水利工程设计

- 83 扬水曝气器外围流场的数值模拟(朱伟峰)
- 87 瀑布沟水电站圆筒阀设计及应用(刘峻, 汪文元, 兰岗, 蒋登云)
- 90 桦林西沟贮灰场灰坝渗水综合治理方案探讨(张慧峰, 谢定松, 蔡红, 魏迎奇)
- 94 透水混凝土的表面纹理和抗滑性能(常英飞)
- 99 涪陵新区鹤凤大道二期设计方案探讨(彭家胜)
- 103 河流支流入河口水质处理系统工程初探(陈光荣, 陈敏, 张志)

制造工程设计

- 105 大型机械工厂设计中的起重机设置(张伟光)
- 107 静压线铸件冷却问题的探索与思路(任永明)

工程施工技术

- 109 现浇混凝土空心楼盖在工程中的应用(于桂芝)
- 112 危旧房改造工程采用无破损加固施工技术的问题分析(彭雷)
- 118 桥梁施工技术及裂缝成因分析(李耀生)
- 121 苏州某商服楼钢管混凝土环梁节点施工技术(汪超平, 庆升, 王顺柯)
- 123 啤酒集团新建工程施工质量控制要点(白雪峰)

工程项目管理

- 127 炼化工程EPC项目的WBS编制与应用(常军)
- 133 谈特大型钢铁企业新一代总图管理信息系统(田国兵, 尹梅, 罗璇)
- 136 建筑项目中限额设计的应用(吉林涛)
- 138 政府投资项目可行性研究报告质量控制措施研究(曾凡全)
- 142 基于风险矩阵的印度EPC电站项目风险与对策研究(桑培东, 张大鹏)



FOREWORD

- 05 Quality is the First in One Hundred Plan

INFORMATION

- 06 "The State Council Issued the 35 Policy to Revitalize the Northeast" Etc. 23

SPECIAL FOCUS

- 08 Management Innovation and the Future of Design Institute

ARCHITECTURE NEON

- 12 Wonderful Old House Transformed—Pan Zuyin Residence (After the Middle Part and East) Maintenance Treatment

INFORMATIONIZATION

- 15 The Thinking About the Promotion of Three-dimensional Design Work in Design Institute
- 19 Digital Means to Improve the Design Efficiency

TIANQIANG VIEW

- 21 How Design Institute based on the Strategic Angle to Building Enterprise Project Management System

ECUC VIEW

- 23 The Implement and Applications of Green Ecological and Humanistic Philosophy in Campus Planning and Design

Architectural and Structural Design

- 25 The Integration of the Space and the Environment—Design for New Chemistry Building in Beijing University (DONG Zhen-xia)
- 28 Research on the Drawing Methods of the Shearing Force and Bending Moment Diagram of Static Determinacy Plane Rigid Frame (XI Li-ping)
- 31 Example Analysis of Solid-borne Noise Control of Residential Buildings (YANG Jian, WAN Ye-qing, HE Ping, GUO Xiao-liang, YU Luo-yong, MA Tong-feng)
- 34 Research on Integrated Arrangement of Pipeline in Large Iron & Steel Plant (FAN Xin-ku, HU Shun-li, LI Jun-xia)
- 38 Application of Cast-in-situ Concrete Hollow Floor Structure Design in a Cloud Computing Network Data Room Building (SUN Bi-xiang, ZHANG Xing-qing, LIU Yao, QING Zhan-bo)
- 43 The Effect Matrix Method Based on Cable Initial Imperfections (ZHANG Chuan-sheng)
- 48 The Increase of Intensive Development in Beijing in the View of Residence Zone Planning Key Points (YANG Hua, ZHANG Ying-qi)
- 51 Structural Analysis and Design of a High-rise Residential Building in Changsha (BI Zhao-yang, FENG Ke, SU Yun-peng)
- 57 Small and Medium-sized City High-rise Building Layout Analysis (DENG Zhu-song)

Engineering Design of the Ground

- 60 A Comprehensive Treatment Plan and Slope Greening Design in Taian (LI Xin-hua, WANG Tao)
- 63 The Application of the Pile After Grouting Method in Yize Project (ZENG Rong)
- 67 Tianjin Determine Explore Static Vertical Bearing Capacity of Precast Pile (TANG Bo-hua)

Public Utilities Design

- 69 The Research of Choosing PE-RT II Pipe and PE-Xa Pipe (ZHENG Ying-ping, YANG Fan)
- 72 The Discussion of High-Voltage Electrical Equipment Insulated Installation's Necessity and Implementation Methods (ZHONG Yi)
- 75 Electrical Design of Fitting-out Quay (ZHAO Liang)
- 78 Discussion on Design of Water Supply and Drainage of Urban Tunnel (LIU Meng, GUO Zeng-hui)
- 80 Flue Gas Desulfurization 6kV Load Calculation and Plant Reactor Calculation (WANG Lei, HOU Yong-gang)

Municipal · Traffic · Water Resources · Engineering Design

- 83 Numerical Simulations on the Hydro-field of Water-lifting Aerator Periphery (ZHU Wei-feng)
- 87 Design and Application of Ring Gate in Pubugou HPP (LIU Jun, WANG Wen-yuan, LAN Gang, JIANG Deng-yun)
- 90 Study on Reinforcement Measure of Leakage in the Ash Dam of Hualinxigou (ZHANG Hui-feng, XIE Ding-song, CAI Hong, WEI Ying-qi)
- 94 Evaluation of Surface Textures and Skid Resistance of Pervious Concrete Pavement (CHANG Ying-fei)
- 99 Study of Two Stage Design Scheme of Fuling New District Crane Fung Avenue (PENG Jia-sheng)
- 103 Design of Water Treatment System Engineering in Outfall of Tributary of River (CHEN Guang-rong, CHEN Min, ZHANG Zhi)

Manufacture Engineering Design

- 105 Crane Set in Heavy Machinery Plant Design (ZHANG Wei-guang)
- 107 Exploration and Thinking of the Static Pressure Line Casting Cooling Problem (REN Yong-ming)

Construction Technology

- 109 Application of Cast-in-place Concrete Hollow Floor Structure in Engineering (YU Gui-zhi)
- 112 Analysis Ramshackle Engineering Problems Using Reinforcement Construction Technology Without Damage (PENG Lei)
- 118 Analysis of the Causes of Crack and the Bridge Construction Technique (LI Yao-sheng)
- 121 Concrete Construction Technical of Steel Pip Column for Ring Beam Joints in a Commercial Service Building in Suzhou (WANG Chao-ping, QING Sheng, WANG Shun-ke)
- 123 The Key Points of Quality Control in New Brewery Construction (BAI Xue-feng)

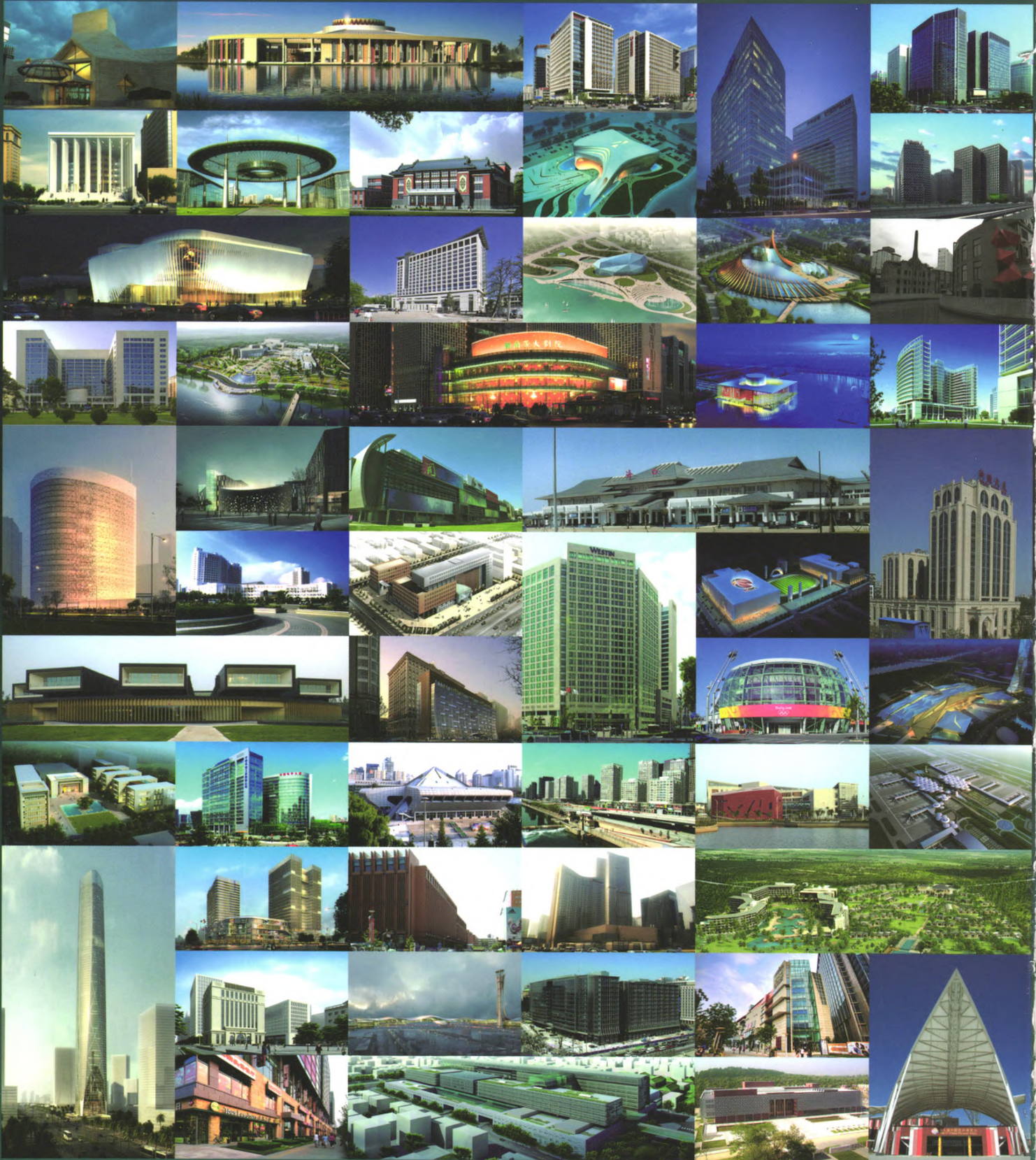
Project Management

- 127 WBS Development and Application for Refinery EPC Project (CHANG Jun)
- 133 New Generation of General Plan Management Information System on Large Iron and Steel Enterprise (TIAN Guo-bing, YIN Mei, LUO Xuan)
- 136 Study on Structure Limited Design Specifications for a Real Building Project (JI Lin-tao)
- 138 Research on the Measures to the Quality Control of the Government Investment Project Feasibility Study Report (ZENG Fan-quan)
- 142 Indian EPC Power Plant Project Risk and Countermeasures Research Based on the Risk Matrix (SANG Pei-dong, ZHANG Da-peng)



中国中元国际工程有限公司

CHINA IPPR INTERNATIONAL ENGINEERING CO., LTD.



中国中元国际工程有限公司是集工程咨询、工程设计、工程总承包、项目管理、和技工贸为一体的工程公司。公司现拥有工程技术人员1300多人，全国设计大师1人，各学科博士、硕士等300余人，各类注册工程师500余人。公司具有综合甲级工程设计、房屋建筑工程施工总承包、城乡规划、工程总承包、建设监理、工程咨询、工程造价甲级等资质。公司的质量、环境、职业健康安全管理体系健全，数十年来一直跻身于全国勘察设计综合实力、工程承包和项目管理百强单位的行列。

地址：北京市西三环北路5号 邮编：100089 电话：(010) 68458355 传真：(010) 68732688 网址：<http://www.ippr.com.cn> 邮箱：office@ippr.net