



工程建设与设计

国家机械工业局工程建设中心 中国机械工业勘察设计协会 中国中元国际工程有限公司 CN 11-3914/TU 2016年第01期 总第333期



2

福

6

猴

1

卷首

05 一元复始 万象更新

动态资讯

06 “国务院：开展钢结构建筑试点、扩大绿色建材等使用、精简优化企业投资和高速公路审批”等信息22则

2015盘点

08 2015年勘察设计行业十大新闻

天强视点

11 立足业务转型发展，理性推进体制改革

信息化

14 BIM体系下的参化设计及绿色分析应用

论坛

17 一转两促三拓展 提质增效铸强院
——中联西北工程设计研究院有限公司转型发展纪实

19 铁路土地综合开发研究和商业创新思考

建筑与结构设计

- 21 某钢管混凝土格构柱超重型单层厂房结构设计(毛呈龙, 王俊永, 沈端宏, 徐敏杰, 陆锋)
24 某网架杆件弯曲的原因分析及处理(王晓娟, 肖建春, 罗杰)
26 厚板、单向板和双向板的工程量统计(刘玉茜, 毛筱霏)
30 基于反应谱的场地地震波合成软件与应用(高洪健, 崔红娜, 赵少伟)
34 某IDC机房结构设计(田大年, 刘斌, 张珩, 竹影, 姚云龙)
37 建筑工程外墙保温技术的运用实践及技术要点解析(朱洁辰)
40 探析矩形截面对称配筋偏压构件截面设计步骤(张荣兰)

基础工程设计

- 42 谈泵站地基处理施工中地下水位的控制(西顺良)
44 高压旋喷注浆法在既有房屋地基处理中的应用(董鹏)
48 复杂地质体的FLAC^{3D}数值模型建立方法(舒伟富, 杨超)

公用工程设计

- 51 基于ANSYS的输电线路角钢塔连接节点装置分析(姜太荣, 张元良, 张翼虎, 葛亚平)
54 淄博市某酒店空调系统设计分析(朱孝良)

市政·交通·水利工程设计

- 57 运营期铁路列车荷载与地铁列车荷载的相互作用分析(王娅晖)
60 聚合物在路面预防性养护方案设计中的应用(常军辉)
64 基于小波分析大跨度悬索桥的结构健康监测(曹银涛)
68 谈公路桥梁建设施工质量的安全管理(张冬磊)
70 不同纤维对沥青混凝土性能的稳定和增强效应研究(王宁晨)
74 泡沫沥青冷再生技术在公路改扩建工程中的应用(韩争)
76 系杆拱桥吊杆初张拉索力的计算研究(何康)
79 谈道路桥梁工程质量的监理工作(张巍)
81 水泥混凝土路面共振碎石技术探讨(崔国燕)
84 井冈山市新城区城市防洪规划经济效益分析(刘春秀)

制造工程设计

- 87 人机工程仿真技术在车门装焊工序中的应用(徐镇, 张玉静)

环境工程设计

- 90 中美炼钢行业污染物排放限值研究(梁础文)

工程施工技术

- 94 北京砂卵石地层盾构机选型与设计(杨长维, 程盼盼)
97 福州巫洋隧道建设工程地质条件及地质风险评价(苗德政, 张爱涛, 丁文荣)
101 沉管法碎石桩处理软地基施工工艺浅析(张凯)
104 桥梁挂篮结构设计和施工要点分析(张颖)
107 连续配筋混凝土路面施工技术探讨(吴品娟)
109 EPS颗粒混合轻质土在高速公路施工中的应用(李雪松)
112 浅谈道路路基与桥梁工程施工技术(边磊)
114 谈桥梁钻孔灌注桩的施工工艺要求(吴丹)
117 体外预应力在桥梁结构加固中的理论分析与技术应用研究(刘洪泽)
119 干振碎石桩在高速公路施工中的应用(赵有龙)
122 水泥稳定砂砾基层在公路施工中的应用(李春霞)
124 市政软土路基施工技术研究(张立群)
127 异形脚手架在某公寓楼项目中的搭设施工技术(郭永军, 王川)
133 热沥青混合料中二氧化碳排放量的评估系统研究(陶武庭)
137 纤维和膨胀剂的混凝土路面开裂及力学性能研究(梅利峰)

工程项目管理

- 141 城市建设投资公司发展战略研究——以济南市城市各建设投资公司为例(股鹏)
145 基于公路造价管理实践探究强化预算分析和控制(高辉)
148 水电站机电设备维护检修管理(汪浩)
151 工程招标采购中的投诉预防与处理(王将军)
155 谈“小业主、大监理”模式在河北省的应用(常文洁)
158 谈公路桥梁工程造价的管理与控制(吕福霞)
160 配电网故障风险综合评估方法研究(郭欣)
163 PPP模式应用于城市供热项目分析(丁理峰, 吕访桐)
165 水利工程项目建设管理研究(张光辉)
167 商务型工程公司如何加强海外工程项目执行管理(赵勇)





FOREWORD

- 05 As the New Year Begins Everything Looks Fresh

INFORMATION

- 06 "State Council: Development of Steel Structure Building Pilot, Expand Green Building Materials Using and so on, Streamline and Optimize Business Investment and Highway Approval" Etc. 22

2015 INVENTORY

- 08 2015 Top Ten News of Exploration and Design Industry

TIANQIANG VIEW

- 11 Based on Business Transformation and Development, Reason Promote Structural Reform

INFORMATIONIZATION

- 14 Parametric Design and Application of Green Analysis under the BIM System

FORUM

- 17 A Transformation and Two Promotion and Three Expansion Improve Quality and Enhanced Efficiency and Hastened Powerful Enterprise
- 19 Synthetically Development and Research on Railway Land and Considerations on Business Innovation

Architectural and Structural Design

- 21 A Structural Design of Heavy-duty Workshop With Concrete-filled Steel Tube Laced Columns (MAO Cheng-long, WANG Jun-yong, SHEN Rui-hong, XU Min-jie, LU Feng)
- 24 Cause and Treatment of Bending Bars of a Grid Structure (WANG Xiao-juan, XIAO Jian-chun, LUO Jie)
- 26 Engineering Statistics of Thick Plate, One-way and Two-way Slabs (LIU Yu-qian, MAO Xiao-fei)
- 30 Synthesis and Application of Site Seismic Waves Based on Response Spectrum (GAO Hong-jian, CUI Hong-na, ZHAO Shao-wei)
- 34 Structure Design on an IDC Building (TIAN Da-nian, LIU Bin, ZHANG Heng, ZHU Ying, YAO Yun-long)
- 37 Analysis on Practice and Technical Points of External Wall Insulation Technology of Building Engineering (ZHU Jie-chen)
- 40 Analysis of Rectangular Cross Section Symmetrical Reinforcement Bias Component Cross Section Design Steps (ZHANG Rong-lan)

Construction & Design For Project

- 42 Discussion on the Control of Groundwater Level in the Foundation Treatment and Construction of Pumping Station (XI Shun-liang)
- 44 Application of High Pressure Jet Grouting in Existing Building Ground Improvement (DONG Peng)
- 48 Method of Modeling Complex Geologic Body with FLAC^{3D} (SHU Wei-fu, YANG Chao)

Public Utilities Design

- 51 The Analysis about the Connection Node Device of the ANSYS Transmission Line Angle-steel Tower (JIANG Tai-rong, ZHANG Yuan-liang, ZHANG Yi-hu, GE Ya-ping)
- 54 The Analysis of a Hotel Air-condition System in Zibo (ZHU Xiao-liang)

Municipal · Traffic · Water Resources Engineering Design

- 57 Analysis of the Interaction Between Railway Train Load and Subway Train Load (WANG Ya-hui)
- 60 Application of Cluster Analysis to Preventive Maintenance Scheme Design of Pavement (CHANG Jun-hui)
- 64 Structural Health Monitoring of Long-span Suspension Bridges Using Wavelet Packet Analysis (CAO Yin-tao)
- 68 Discussion on the Safety Management of Highway Bridge Construction Quality (ZHANG Dong-lei)
- 70 Stabilizing and Reinforcing Effects of Different Fibers on Asphalt Mortar Performance (WANG Ning-chen)
- 74 Application of Foamed Asphalt Cold Regeneration Technology in Highway Reconstruction Project (HAN Zheng)
- 76 Calculation of Tensioned Cable Force in the Beginning of Tied Arch Boom (HE Kang)
- 79 On Supervision Work of Road Bridge Engineering Quality (ZHANG Wei)
- 81 Discussion on the Technology of the Cement Concrete Road Surface with Resonance (CUI Guo-yan)
- 84 Analysis on Economic Benefit of Urban Flood Control Planning in Jinggangshan City (LIU Chun-xiu)

Manufacture Engineering Design

- 87 Application of Ergonomics Simulation Technology in Cab-door Welding Procedure (XU Zhen, ZHANG Yu-jing)

Environment Engineering Design

- 90 Comparisons of the Emission Standards for Particulate Matter in Steel Foundries Between China and USA (LIANG Chu-wen)

Construction Technology

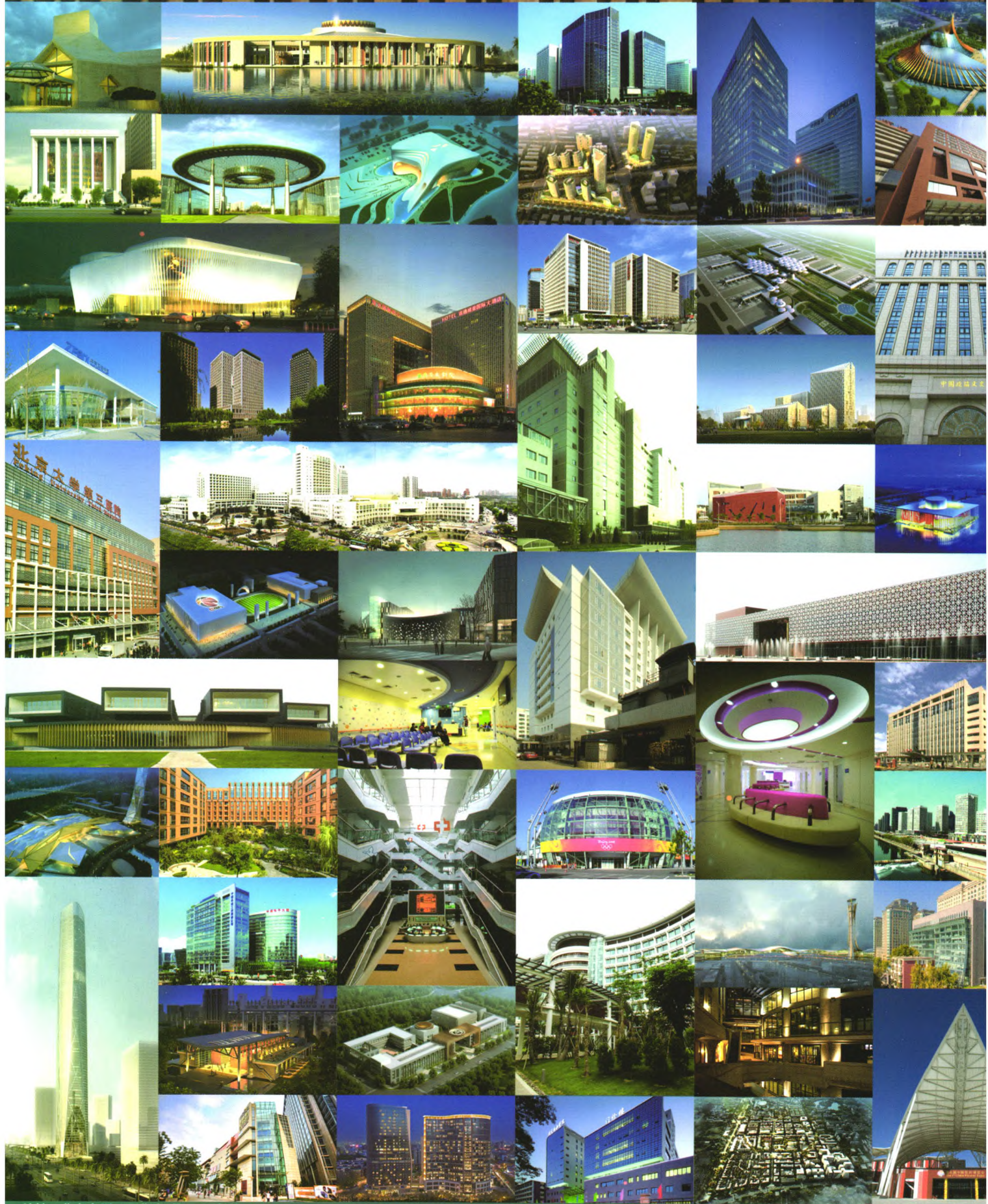
- 94 The Lectotype and Design of Shield for Sandy Pebble Stratum in Beijing (YANG Chang-wei, CHEN Pan-pan)
- 97 Fuzhou Wu yang Tunnel Engineering Geological Conditions and Risk Evaluation (MIAO De-zheng, ZHANG Ai-tao, DING Wen-rong)
- 101 The Construction Technology of Soft Foundation Treatment Method of Gravel Pile Sinking (ZHANG Kai)
- 104 Key Points Analysis of the Design and Construction of Bridge Hanging Basket (ZHANG Ying)
- 107 Continuously Reinforced Concrete Pavement Construction Technology (WU Pin-juan)
- 109 Application of EPS Particles in the Construction of Highway (LI Xue-song)
- 112 On Road and Bridge Engineering Construction Technology (BIAN Lei)
- 114 Construction Technology Requirements of Bridge Bored Pile (WU Dan)
- 117 Theoretical Analysis and Technology Application Research of External Prestressing in Bridge Structure Reinforcement (LIU Hong-ze)
- 119 Application of Dry Vibration Gravel Pile in Highway Construction (ZHAO You-long)
- 122 The Application of Cement Stabilized Gravel Base in Highway Construction (LI Chun-xia)
- 124 Research on Construction Technology of Municipal Soft Soil Subgrade (ZHANG Li-qun)
- 127 Erection Technology of Specially-shaped Scaffold in Construction of an Apartment Building Project (GUO Yong-jun, WANG Chuan)
- 133 Evaluation System for CO₂ Emission of Hot Asphalt Mixture (TAO Wu-ting)
- 137 Cracking and Mechanical Properties of Airport Concrete Pavement with Fiber and Expansive Agent (MEI Li-feng)

Project Management

- 141 The Research on Development Strategy of Urban Construction Investment Corporations—Take the Construction Investment Companies in Jinan as Examples (YIN Peng)
- 145 Strengthen Budget Analysis and Control Based on Road Financial Management Practices Roadhe (GAO Hui)
- 148 Maintenance Management of Mechanical and Electrical Equipment in Hydropower Station (WANG Hao)
- 151 Prevention and Treatment of Complaints in the Procurement of Project Bidding (WANG Jiang-jun)
- 155 Application of the Management Mode of Small Owner and Big Supervision in Hebei (CHANG Wen-jie)
- 158 Management and Control of Highway Bridge Engineering Cost (LV Fu-xia)
- 160 Study on Comprehensive Evaluation Method of Fault Risk in Power Distribution Network (GUO Xin)
- 163 Analysis of the PPP Model Applied to Urban Heating Project (DING Li-feng, LV Fang-tong)
- 165 Research on the Construction Management of Water Conservancy Project (ZHANG Guang-hui)
- 167 How to Strengthen the Implementation Management of Overseas Engineering Projects in Business-type Engineering Companies (ZHAO Yong)



中国中元国际工程有限公司
CHINA IPPR INTERNATIONAL ENGINEERING CO., LTD.



地址：北京市西三环北路5号 邮编：100089 电话：(010) 68458355 传真：(010) 68732688 网址：<http://www.ippr.com.cn> 邮箱：office@ippr.net