



工程设计与设计

国家机械工业局工程建设中心 中国机械工业勘察设计协会 中国中元国际工程有限公司 CN 11-3914/TU 2016年第12月 总第349期



一切高标准

1956 - 2016

中国建筑标准设计研究院六十年

标立甲子
筑梦百年



中国建筑标准设计研究院

ISSN 1007-9467



9 771007 946103

12 >

卷首

05 工程建设行业正迈进互联互通新时代

动态资讯

06 “住房城乡建设部简化《建筑业企业资质标准》部分指标”等信息 13 则

特别关注

08 标立甲子与国同光

论坛

14 C55 混凝土弹性模量时变应对连续刚构桥的影响研究

18 江苏某电镀场地污染特征调查

信息化

22 互联 BIM 时代设计领创未来

24 从图纸到数字, Surface Book 助力工程建设行业信息化

建筑与结构设计

- 25 医疗工艺设计与医院建设项目前期策划(金晨晨)
29 基顶不等高结构的设计问题分析(赵杰林)
32 关于房屋建筑防渗技术的研究(姜付根)
34 谈衡阳市广播电视中心建筑设计理念(王作为)
37 试论城市景观规划设计中的地域性表现手法(王志刚)
39 城市轨道交通车站建筑的人性化设计研究(许磊)
43 温度变化时抗拉刚度对结构位移和内力的影响(刘晓红)
46 工业探伤室的混凝土屏蔽厚度计算(何银,段潇川,刘曼)
50 T型换乘车站结构设计对比研究(陈建新)
52 某选煤厂原煤落煤塔的结构设计(岳永兵)
55 “三馆合一”的体育综合体——缅甸国家体育馆设计(刘高旺)

基础工程设计

- 59 综合勘察技术在岩土工程勘察中的应用(陈明举)
61 某水电站堆积体边坡稳定分析与治理措施(张宪林)

公用工程设计

- 64 CNG 减压站在城镇燃气供应中的应用(郑志强)
66 并网光伏电站优化设计的研究(郑柏恒,董双丽)
70 南昌市商联中心楼盘绿建一星标准景观部分各指标达标设计浅析(于致远,万星亮)

市政·交通·水利工程设计

- 75 外部粘贴预应力碳纤维板加固 T 梁桥极限承载力研究(冯春恒)
78 高速公路服务区停车坪透水铺装结构浅析(田佳磊)
80 高速公路隧道涌突水机制及防治措施(周陈婴)
82 高速公路计量重点工作分析(吕占民)
85 防水技术在公路桥梁中的应用探讨(潘裕种,李瑞玲)
87 山区高速公路勘察设计理念及应用分析(杨国华,杨林恺)
90 公路改扩建工程中的路基拼接技术探究(欧阳路明,唐旻)
93 公路桥梁结构抗震设计研究(郭迪金)
95 泡沫混凝土在公路工程施工中的应用(吴飞)
98 桥梁下部结构的设计及施工(姜鹏)
100 市政道路综合改造工程建设管理实践(唐利雄)
103 多孔沥青路面与压实沥青路面高速公路雨天事故风险分析(郭红涛)
106 不同水位条件下黏土斜心墙坝渗流与稳定性分析(郝丽娟,赵立庭,杜云龙,李维朝)
111 高速公路路基路面排水设计研究(赵春)
113 U 型渡槽设计优化(李小东)
116 桥梁设计中的安全性和耐久性分析(刘海)

制造工程设计

- 118 基于 Revit 三维族构件的图例符号制作研究(张可心,李可,张晶)
121 核主泵试验台三维设计(曾鹏,章煜君,李申杰,邓凯)

环境工程设计

- 124 基于 AHP 的校园环境建设对育人的作用研究(宁蕊蕊,王德臣)
127 聚乙烯类废塑料循环利用的研究进展((景峰,崔升,林本兰,张荣景,程建)

智能与信息化

- 132 移动通信网络 VoLTE 技术的发展现状分析(陈敏聪)
135 解析电子地图空间数据制作(蒋龙,潘振)

工程施工技术

- 138 复杂地质条件下公路双联拱隧道施工技术分析(何友文)
141 探究桥梁下部结构施工工艺及质量控制技术(张莉,黄根花)
143 谈前山河特大桥主桥悬灌梁钢板体外束施工(王双飞)
146 超长混凝土结构温度裂缝及控制技术(郭进平)
148 沥青混凝土路面施工中的问题与改进对策(余金勇,孙金香)
151 热带沙漠沿海气候区大体积混凝土耐久性评价方法及指标研究(陈文波,银晓鹏,张彪)
155 旧路改建中路施工质量控制的分析(郭亮,张园操)
157 探讨大型桥梁工程施工阶段风险控制(戈永发)
160 地铁区间隔断门的施工安全控制实践与研究(胡泊,李艳坤)
163 科威特大学城智能化教学楼施工综合技术(姚国虎)
166 矿山边坡治理中预应力锚索框架的应用(高庆辉)
168 桥梁桩基施工工艺技术及质量控制探究(邓忠,姚清)
171 探讨桥梁加固施工技术和质量控制(孙金香,余金勇)
173 高速公路 SBS 改性沥青混凝土路面施工技术(万田中,周丹)
176 谈井下采矿方法及技术(韦优扬)
178 框架桥顶进施工时既有铁路架空加固技术分析(陈波)
181 衡重式路肩混凝土挡土墙施工技术探讨(张志勇)
183 跨既有有线桥转体系统关键施工技术(张军平)

工程项目管理

- 187 某热电厂产项目开挖边坡稳定性评价设计(董鹏,陈文富,唐锡彬)
190 以设计为龙头的 EPC 总承包模式在苏布雷机电成套项目中的实践与体会(张鹏,陈鹏,赵弦)
194 设计方的基坑工程造价控制要点分析(李元瑜,陈富强)
197 挣值法在石油工程项目进度控制中的应用研究(杨明霞)
200 总目次





FOREWORD

05 The Engineering Construction Industry Has Entered a New Connective Period

INFORMATION

06 “MOHURD Simplify the Requirements of 《The standard of construction enterprise qualifications》” Etc. 13

SPECIAL FOCUS

08 The 60th Anniversary of China Institute of Building Standard Design & Research

FORUM

14 Time-varying Effect of C55 Concrete Elastic Modulus on Continuous Rigid Frame Bridge

18 Investigation of Pollution Characteristics of a Plating Site in Jiangsu

INFORMATIZATION

22 The BIM Technology Leads the Future of Architectural Design

24 Surface Book is Conducive to Promote the Informatization of Engineering Construction Industry

Architectural and Structural Design

- 25 Medical Technology Design and Hospital Construction Project Preliminary Planning(JIN Chen-chen)
- 29 Analysis on Design Problems of Structures with Unequal Height Foundation Top (ZHAO Jie-lin)
- 32 Research on Anti Seepage Technology of House Building (JIANG Fu-gen)
- 34 The Architectural Design Concept of Hengyang Radio and Television Center (WANG Zuo-wei)
- 37 On Regional Expression of Urban Landscape Planning and Design(WANG Zhi-gang)
- 39 Humanized Design Research of Urban Rail Transit Station Architecture(XU Lei)
- 43 Effect of Tensile Stiffness on Structural Displacement and Internal Force with Temperature Change(LIU Xiao-hong)
- 46 Shielding Concrete Thickness of Industrial Flaw Detection Rooms Calculation(HE Yin, DUAN Xiao-Chuan, LIU Man)
- 50 Comparative Study on the Structural Design of Transfer Station(CHEN Jian-xin)
- 52 Structure Design of Coal Falling Tower in a Coal Preparation Plant(YUE Yong-bing)
- 55 Sports Complex Integrating Three Gyms into One—The Design of Myanmar National Stadium(LIU Gao-wang)

Engineering Design of the Ground

- 59 Comprehensive Application in the Geotechnical Engineering Survey Technology(CHEN Ming-ju)
- 61 Stability Analysis and Treatment Measures of Accumulation Body Slope in a Hydropower Station(ZHANG Xian-lin)

Public Utilities Design

- 64 The Application of CNG Decompression Station in the Town Gas Supply(ZHENG Zhi-qiang)
- 66 Research on Optimized Design of Grid-connected PV System(ZHENG Bo-heng, DONG Shuang-li)
- 70 Nanchang Commercial Union Center Property Star Green Building Standards a Part of the Landscape Design of the Various Indicators of Compliance(YU Zhi-yuan,WANG Xing-liang)

Municipal · Traffic · Water Resources · Engineering Design

- 75 Analysis of Ultimate Bearing Capacity for T Girder Bridge Strengthened by External Bonded Prestressed Carbon Fiber Board(FENG Chun-heng)
- 78 Analysis of Permeable Pavement Structure in the Parking Area of the Expressway Service Area(TIAN Jia-lei)
- 80 Highway Tunnel Gushing Water Inrush Mechanism and Prevention Measures(ZHOU Chen-ying)
- 82 Analysis on the Key Work of Expressway Measurement(LV Zhan-min)
- 85 Discussion on the Application of Waterproof Technology in Highway Bridge(PAN Yu-zhong,LI Rui-ling)
- 87 New Concept and Application Analysis of the Survey and Design of the Expressway in Mountainous Area(YANG Guo-hua, YANG Lin-lin)
- 90 Study on the Roadbed Splicing Technology in Highway Reconstruction and Extension Project(OUYANG Lu-ming, TANG Min)
- 93 Study on Seismic Design of Highway Bridge Structure(GUO Di-jin)
- 95 Study on Application of Foamed Concrete in Highway Engineering Construction(WU Fei)
- 98 Design and Construction of Bridge Substructure (JIANG Peng)
- 100 Comprehensive Municipal Road Reconstruction Project Construction Management Practices(TANG Li-xiong)
- 103 Rain-related Crash Risk on Freeway Pavements in Porous and Dense Asphalt(GUO Hong-tao)
- 106 Seepage and Stability Analysis of Clay Core Dam under Different Hydraulic Conditions(HAO Li-juan, ZHAO Li-ting, DU Yun-long, LI Wei-chao)
- 111 Design of Highway Subgrade Pavement Drainage(ZHAO Chun)
- 113 Optimum Design of U Type Aqueduct(LI Xiao-dong)
- 116 Analysis on Safety and Durability of Bridge Design(LIU Hai)

Manufacture Engineering Design

- 118 Research on Appending Symbol to Revit 3D Family Component
- 121 The 3D Design of Test Bed for Nuclear Power Reactor Coolant Pump(ZENG Peng, ZHANG Yu-jun, LI Shen-jie, DENG Kai)

Environment Engineering Design

- 124 Research on Campus Environment Construction Effect on Education Based on AHP(NING Rui-rui, WANG De-chen)
- 127 Progress on Recycling Utilization of Waste Plastics of Polyethylene Category (JING Feng, CUI Sheng, LIN Ben-lan, ZHANG Rong-jing, CHENG-J)

Intelligence and Information Technology

- 132 Mobile Communication Network VoLTE Technology Development Present Situation Analysis (CHEN Min-chong)
- 135 Analysis of Electronic Map Spatial Data Production (JIANG Long,PAN Zhen)

Construction Technology

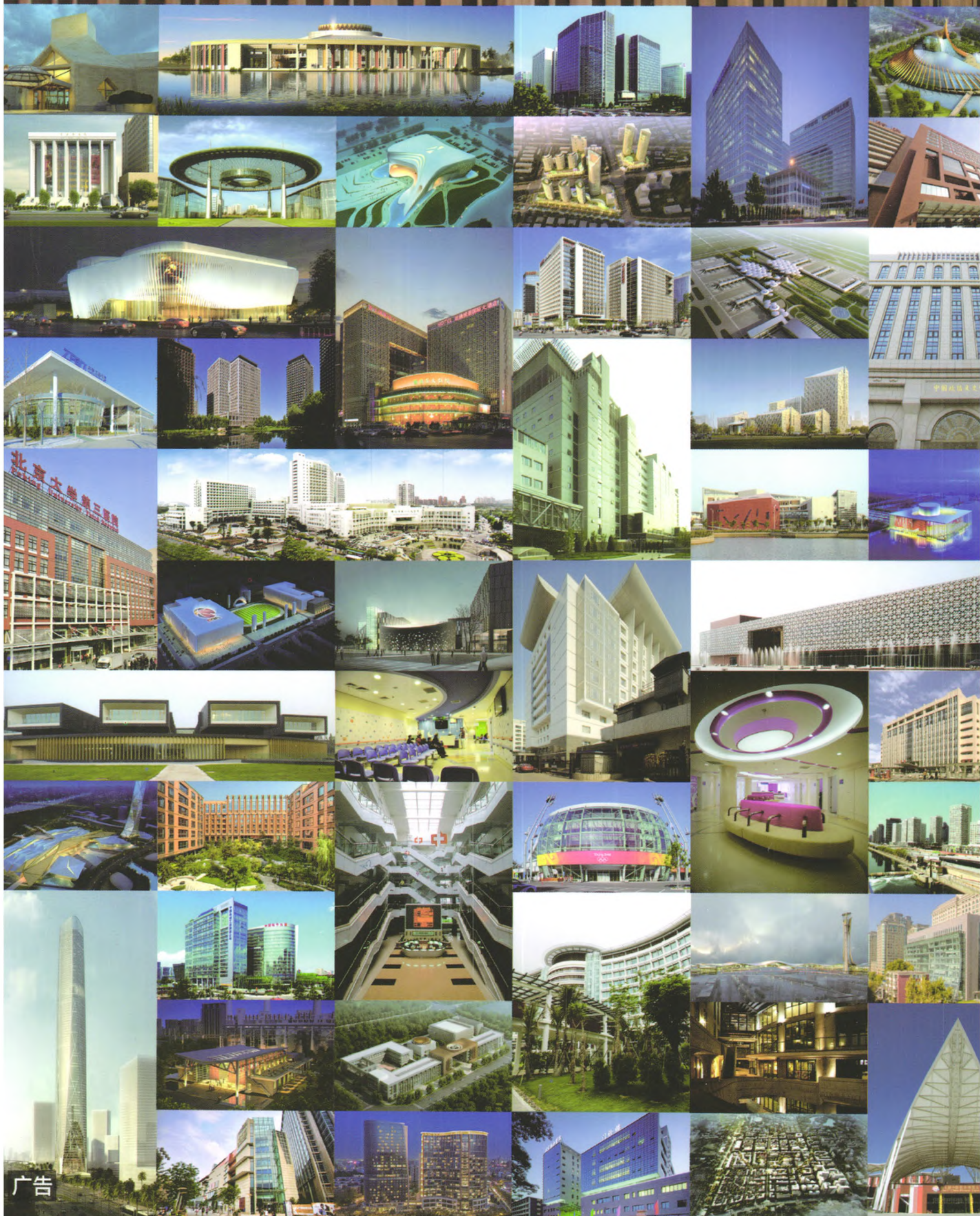
- 138 Double Arch Tunnel Construction Technology Analysis Under Complex Geological Condition(HE You-wen)
- 141 Research on Construction Technology and Quality Control Technology of Bridge Substructure(ZHANG Li, HUANG Gen-hua)
- 143 The Main Bridge of Qianshan Bridge Cantilever Steel Webs Beam Construction(WANG Shuang-fei)
- 146 Super-long Concrete Structure Temperature Crack and Control Technology(GUO Jin-ping)
- 148 Problems and Improvement Measures in the Construction of Asphalt Concrete Pavement(YU Jin-yong, SUN Jin-xiang)
- 151 Index Study and Durability Evaluation Method of Mass Concrete in Coastal Tropical Desert Climate Zone (CHEN Wen-bo, YIN Xiao-peng, ZHANG Biao)
- 155 Analysis of Construction Quality Control of Old Road Reconstruction(GUO Liang, ZHANG Yuan-cao)
- 157 Discussion on Risk Control of Large Bridge Engineering Construction Stage (GE Yong-fa)
- 160 Practice and Research on Construction Safety Control of Metro Interval Partition Door (HU bo, LI Yan-kun)
- 163 Construction Comprehensive Technology of Intelligent Teaching Building of Kuwait University City (YAO Guo-hu)
- 166 The Application of the Mine Slope Control of Prestressed Anchor Cable Framework (GAO Qing-hui)
- 168 Study on Construction Technology and Quality Control of Bridge Pile Foundation (DENG Zhong, YAO Qing)
- 171 Discussion on the Construction Technology and Quality Control of Bridge Reinforcement (SUN Jin-xiang, YU Jin-yong)
- 173 Construction Technology of SBS Modified Asphalt Concrete Pavement in Expressway (WAN Tian-zhong, ZHOU Dan)
- 176 Introduction to the Underground Mining Method and Technology (WEI You-yang)
- 178 Existing Railways Overhead Reinforcing Technical Analysis in Construction of Frame Bridge Jacking (CHEN Bo)
- 181 Discussion on Construction Technology of Retaining Wall Concrete Balance Weight Shoulder (ZHANG Zhi-yong)
- 183 Key Technology of Existing Railway Rotating Bridge Swivel System (ZHANG Jun-ping)

Project Management

- 187 Stability Analysis and Treatment Design of Excavation Slope of A Cogeneration Project (DONG Peng,CHEN Wen-fu,TANG Xi-bin)
- 190 Practices and Experiences on Design Institute Leading Mode in EPC Contract Implement of SOUBRE Hydropower Electromechanical Equipment Wholly Set Project (ZHANG Peng,CHEN Peng, ZHAO Xian)
- 194 Control Points of Building Foundation Pit Cost Based on the Designer's Perspective (LI Yuan-yu, CHEN Fu-qiang)
- 197 Research on the Application of Earned Value Method in the Progress Control of Petroleum Engineering Project (YANG Ming-xia)



中国中元国际工程有限公司
CHINA IPPR INTERNATIONAL ENGINEERING CO., LTD.



广告

地址：北京市西三环北路5号 邮编：100089 电话：(010) 68458355 传真：(010) 68732688 网址：<http://www.ippr.com.cn> 邮箱：office@ippr.cn