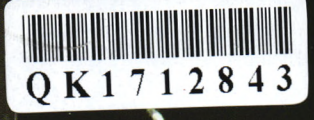




# 工程建设与设计

办: 国家机械工业局工程建设中心 中国机械工业勘察设计协会 中国中元国际工程有限公司 CN 11-3914/TU 2017 年第07月上 总第363期



封面人物: 金贤集团 执行董事 李军



## 动态资讯

- 03 “7月1日起,工程质量保证金预留比例降至3%”等信息15则

## 封面人物

- 08 高新科技引领行业发展

## 论坛

- 12 文物保护在文化旅游景区建设中的融合

- 16 三维数字化设计助力新能源工程

- 19 Electrical Designer电气三维设计系统开发与应用

- 22 基于Bentley三维设计模型的工程算量系统开发与应用

## 建筑与结构设计

- 25 结构设计中优化设计应用(赵兴)  
27 输煤栈桥设计要点(常杰云)  
30 超长地下室混凝土结构温度应力分析(张明月,孙强)  
33 谈人防工程的结构设计特点及有效措施(刘军舰,解峰,李映春)  
36 长安汽车全球研发中心办公楼结构抗震设计(安卫锋)  
38 某超限框架-核心筒结构罕遇地震分析与性能评价(周明,祝凯鸣,邵弘)  
41 场地与上部结构整体动力相互作用数值分析及研究(潘成筋,潘呈刚)  
44 带有楼顶钢塔的高层建筑理论计算的风振响应研究(赵雅丽)  
48 地下室混凝土结构裂缝控制设计探讨(何红婷,李星徽,吴皓)  
50 现代医院建设的安全理念(罗浩原)  
53 带错层转换的框支剪力墙结构抗震性能分析(张晓将)  
56 江南园林——春舍苑东地块居住小区规划设计(许刚,李苗,钱晔)  
59 现代建筑设计方法的创新分析(邓成甫)  
61 现代住宅建筑设计中存在的问题探究(徐鲁)  
63 大填场地与结构设计的注意事项及处理方案的实例(秦海涛)

## 基础工程设计

- 67 某黄土高陡边坡塌滑的实例分析(张鑫景)  
70 桩基托换设计——以狮岭公园人行天桥为例(李华军,李海平,韦刚,沈杰)

## 公用工程设计

- 73 浅析BIM技术在建筑消防中的应用(蒋士磊,常民)  
76 北京丽泽金融商务区多能互补能源系统案例分析(任毅,丁理峰,任君,刘钊,曹桂学)  
79 爆炸危险环境电气设计问题探析(陈建雄,张丽丽,吕成乐)  
82 任煤煤矿瓦斯抽放泵润滑保护装置的设计与应用(杜高鑫)  
84 自动灭火系统在南山文体中心项目中的应用(刘赫南)  
86 华中地区高压输电线路设计覆冰研究(刘志进)  
89 浅析公路隧道防排水施工质量控制要点(黄宗英)  
91 生物制药洁净厂房几种集中式空气净化系统探讨(杨敏)  
95 电锅炉蓄热技术应用于“三北”地区集中供暖的可行性分析(曹桂学,任毅,任君,别新,贺继超)

## 市政·交通·水利工程设计

- 98 高模量沥青混凝土在桥面铺装中的应用(高谋)  
101 谈沥青混凝土路面养护的设计思路及一般方法(董川)  
104 市政道路软土地基处理方案比选(龚琨)  
107 谈政府在城市基础设施投融资中的多元化角色(周红敏)  
109 珠海市西部中心城区市政道路海绵化设计实践(郭显惠,何帆)  
112 国道227线大通段沥青路面检测病害原因分析(郭增宾)  
114 高速公路桥梁设计的安全性评价方法和指标(李颖)  
117 水利水电工程建设质量控制方法(张德斌,许方祖)  
119 道桥工程施工中的混凝土裂缝原因与修复措施(崔海辉)  
122 山区高速公路沥青路面抗滑性能损失成因及处治措施(吕凌,董大建)  
124 浅析弯桥倾覆原因和改善方法(杜惠荣,张伟国)  
127 对桥梁设计中的安全性影响因素的研究(何中鹏,徐祖杰,李永忠)  
129 高弹性改性沥青应力吸收层在高速公路水泥混凝土罩面工程中的应用(王鹏)  
132 道路桥梁工程存在的施工质量问题及对策(董大建,袁家权)  
134 高速公路路基设计与施工技术(崔迪)  
137 长大纵坡沥青路面车辙防治措施(尹忠文,陈泽滨)  
139 自锚式悬索桥主缆线形测量控制(解光路)  
142 对地铁隧道结构移交铺轨前置条件的一些思考(张旭)  
145 免振压水泥稳定碎石力学性能研究(袁家权,韩忠贵)  
147 谈隧道施工技术管理(蔡涛)  
149 云南高速公路沥青路面施工管控系统研究(韩忠贵,尹忠文)  
152 车辆超载对沥青路面的结构性影响及对策研究(陈玥)  
155 上马相迪水电站纯机械超速保护装置控制方式选择(杨加明)

## 制造工程设计

- 157 SWI H方法在铸造车间工程设计中的应用(郜业见,丰大顺)

## 智能与信息化

- 160 矿山水文地质信息管理方法(刘小龙)

## 工程施工技术

- 163 变截面现浇箱梁脚手架搭设施工技术与应用研究(周建民)  
165 高速公路工程中高填方路基强夯施工技术(刘树)  
168 无黏结预应力技术在国外某项目中的应用(谢青松)  
171 广佛环线沙堤盾构隧道始发段穿越南北大涌河底浅埋微净距施工安全技术浅析(刘叶)  
174 节段箱梁预制冬季施工方法探讨(杨康)  
177 钢板组合梁桥面板预制规模化的施工技术(孙发明)  
180 复杂地质条件下的超深人工挖孔桩施工实例(颜昌明)  
183 煤矿井下曲线巷道的施工难点及质量控制分析(张文鑫)  
185 路桥施工中防水层的质量控制与管理(王彦)  
188 探究桥梁施工中连续钢梁技术(罗太原)  
190 路桥工程施工中钻孔灌注桩技术的应用分析(史英爽)  
193 供水工程输水线路隧洞下穿地方公路、河谷施工方案(赵旭柯)  
195 路桥公路工程建设中路基路面施工技术探讨(郁振宁)  
198 房建施工中节能技术的应用探究(刘志生)  
200 高速公路SMA改性沥青混凝土路面施工技术及其优化(李玉波)  
203 隧道施工技术管理分析(徐凯,黄宇)  
205 下穿既有高速公路低净空预制箱梁安装施工技术(高文韬)  
208 公路桥梁施工要点分析(黄宇)  
210 关于大跨度桥梁施工技术的要点分析(任超)

## 工程项目管理

- 213 现代计算机技术在市政工程管理中的重要性分析(陈挺)  
216 从事项目管理的几点体会(张智杰)  
218 谈铁路项目物资管理(金晨)  
221 公路工程图纸审核中关键思路探讨(薛鹏)  
223 某海外非标设备项目总承包管理与实践(丁兴国)  
227 新能源光伏电站EPC总承包模式研究(练松涛)  
229 浅析路桥工程施工质量的监理控制要点(赵兰义)  
232 道路桥梁养护管理中的问题与对策研究(陈玉婷)  
234 活性粉末混凝土研究与应用进展(肖锐)  
237 浅析公路工程概预算工程量计算要点(贾栋扬,杨苏)





### Architectural and Structural Design

- 25 Application of Optimal Design in Structural Design (ZHAO Xing)
- 27 Design Points of Coal Transporting Trestle (CHANG Jie-yun)
- 30 Overlong Basement Concrete Structure Temperature Stress Analysis (ZHANG Ming-yue, SUN Qiang)
- 33 On the Structural Design Features and Effective Measures of Civil Air Defense Project(LIU Jun, JIAN Jie-feng, LI Ying-chun)
- 36 Anti Seismic Design of Office Building of Changan Automotive Global Research and Development Center(AN Wei-feng)
- 38 Rare Earthquake Analysis and Performance Evaluation of an Out of Gauge Frame-Core Tube Structure (ZHOU Ming, ZHU Kai-ming, SHAO Hong)
- 41 Numerical Analysis of Dynamic Soil-Structure Interaction(PAN Cheng-in, PAN Cheng-gang)
- 44 Theoretical Calculation and Study on the Wind-induced Acceleration Responses of a Super High-rise Building with Roof Steel Tower(ZHAO Ya-li)
- 48 Discussion on Cracking Control in Basement Concrete Structure (HE Hong-ting, LI Xing-wei, WU Hao)
- 50 Modern Hospital Construction Safety Concept(LUO Hao-yuan)
- 53 Analysis of Seismic Performance of Frame Supported Shear Wall Structure with Staggered Conversion(ZHANG Xiao-jiang)
- 56 Jiangnan Garden—Planning and Design of the Residential Area in the East Block of the Chunheyuan(XU Gang, LI Miao, QIAN Ye)
- 59 The Innovation Analysis of Modern Architecture Design Method (DENG Cheng-fu)
- 61 Problems of Modern Residential Building Design(XU Lu)
- 63 Design of Large Filling Site and Structure and the Treatment Plan Example (QIN Hai-tao)

### Engineering Design of the Ground

- 67 The Analysis of the Collapse of a High and Steep Slope in Loess Area(ZHANG Xin-jing)
- 70 Pile Foundation Underpinning Design ——Taking Shiling Park Pedestrian Bridge as an Example (LI Hua-jun, LI Hai-ping, WEI Gang, SHEN Jie)

### Public Utilities Design

- 73 Application of BIM Technology in Building Fire Protection (JIANG Shi-lei, CHANG Min)
- 76 Case Analysis of Multi-energy Complementary Energy System in Lize Financial Business District in Beijing (FBD) (REN Yi, DING Li-Feng, REN Jun, LIU Zhao, CAO Gui-xue)
- 79 Analysis on Electrical Design in Explosive Environment(CHEN Jian-xiong, ZHANG Li-li, LV Cheng-le)
- 82 Gas Drainage Pump Lubrication Protection Device Design and Application in Renlou Coal Mine(DU Gao-xin)
- 84 Application of Automatic Fire Extinguishing System in Nanshan Sports Center Project(LIU He-nan)
- 86 Study on Icing Design of HVDC Transmission Lines in Central China(LIU Zhi-min)
- 89 Highway Tunnel Waterproof and Drainage Construction Quality Control Key Points(HUANG Zong-jing)
- 91 Several Central Air-condition Systems in Biological Pharmaceutical Clean Workshop (YANG Min)
- 95 Feasibility Study on Application of Thermal Storage Technology of Electric Boiler in Three Northregions for Centralized Heating(CAO Gui-xue, REN Yi, REN Jun, BIE Shu, HE Ji-chao)

### Municipal · Traffic · Water Resources · Engineering Design

- 98 The Application of High Modulus Asphalt Concrete in Bridge Deck Pavement (GAO Mou)
- 101 On the Design Idea and General Method of Asphalt Concrete Pavement Maintenance(DONG Chuan)
- 104 Comparison and Selection of Soft Soil Foundation Treatment Scheme for Municipal Road(GONG Kun)
- 107 On the Diversification Role of Government in the Investment and Financing of Urban Infrastructure(ZHOU Hong-min)
- 109 The Sponge Design Practice of Municipal Road in the West Central City of Zhuhai (GUO Xian-hui, HE Fan)
- 112 Cause Analysis of Disease Detection Asphalt Pavement on Datong Section of 227 National Highway (GUO Zeng-bin)
- 114 Methods and Criteria of Safety Evaluation for the Design of Highway Bridges (LI Ying)
- 117 Water Resources and Hydropower Engineering Construction Quality Control Method (ZHANG De-bin, XU Wan-zu)
- 119 Concrete Cracks Reason and Restoration Measures in Bridge Engineering Construction (CUI Hai-hui)
- 122 Mountain Highway Asphalt Pavement Anti-sliding Performance Loss Causes and Treatment Measures(LV Ling, DONG Da-jian)
- 124 Cause Analysis and Improving Measures Study on the Curve Bridge Overturning (DU Hui-rong, ZHANG Wei-guo)
- 127 Study on the Influence Factors of Safety in Bridge Design(HE Zhong-peng, XU Zu-ze, LI Yong-zhong)
- 129 Application Elastomer Modified Asphalt Stress Absorbed Layer in the of Highway Cement Concrete Surface Engineering(WANG Peng)
- 132 Quality Problems and Counter Measures of Road and Bridge Engineering (DONG Da-jian, YUAN Jia-quan)
- 134 Highway Road Bed Design and Construction Technology(CUI Gan)
- 137 Longitudinal Slope Asphalt Pavement Rutting Prevention and Control Measures (YI Zhong-wen, CHEN Ze-bin)
- 139 Survey Control of Main Cable of Self-anchored Suspension Bridge(XIE Guang-lu)
- 142 The Subway Tunnel Structure Transfer Track-Laying Pre-conditions(ZHANG Xu)
- 145 Study on Mechanical Properties of Cement Stabilized Crushed Stone(YUAN Jia-quan, HAN Zhong-gui)
- 147 Introduction to the Tunnel Construction Technology Management(CAI Tao)
- 149 Yunnan Highway Asphalt Pavement Construction Control System Research(HAN Zhong-gui, YIN Zhong-wen)
- 152 Structural Performance Investigation of Asphalt Pavement Under Overloaded Truck and Related Countermeasures Analysis(CHEN Yue)
- 155 Control Mode Selection of Mechanical Overspeed Protector of Upper Marsyangdi-A Power Station (YANG Jia-ming)

### Manufacture Engineering Design

- 157 Application of 5W1H in the Design of Casting Workshop Engineering (GAO Ye-jian, FENG Da-shun)

### Intelligence and Information Technology

- 160 Mine Hydrogeological Information Management Methods (LIU Xiao-long)

### Construction Technology

- 163 Variable Cross-section Cast-in-situ Box Girder Scaffolding Construction Technology and Application Research (ZHOU Jian-min)
- 165 The Construction Technology of High Fill Subgrade Compaction of Highway Engineering (LIU Shu)
- 168 Post-tensioned Unbonded Prestressed Technology Used for a Foreign Projects (XIE Qing-song)
- 171 Analysis on Safety Technology During Construction of Shallow-buried and Small Interval Portal Section of Guangfo Loop Shadi Crossing Shield-driven Tunnel Through North and South River Bottom (LIU Ye)
- 174 Discussion on Construction Method of Precast Segmental Box Girder in Winter (YANG Kang)
- 177 Construction Technology of Prefabrication of Steel Plate Girder Bridge Deck (SUN Fa-ming)
- 180 An example of the Construction of Super Deep Hole Digging Pile Under Complex Geological Conditions (YAN Chang-ming)
- 183 Construction Difficulty and Quality Control Analysis of the Coal Mine Roadway Curve(ZHANG Wen-xin)
- 185 Bridge Construction Quality Control and Management of the Water Proof Layer (WANG Yan)
- 188 To Explore the Continuous Steel Beam Technology in Bridge Construction (LUO Tai-yuan)
- 190 Application of Bored Piles Construction Technology Analysis in Road and Bridge Construction Engineering (SHI Ying-shuang)
- 193 Local Road and Valley Section of Water Under Tunnel in Construction Plan in Water Supply Project(ZHAO Shu-ke)
- 195 Subgrade Pavement Construction Technology in the Construction of Road and Bridge Highway Engineering(YU Zhen-ning)
- 198 Housing Construction Energy Conservation Technology Application(LIU Zhi-sheng)
- 200 Construction Technology and Optimization of Expressway SMA Modified Asphalt Concrete Pavement(LI Yu-bo)
- 203 The Tunnel Construction Technology Management Analysis (XU Kai, HUANG Yu)
- 205 Installation Construction Technology of Low Headroom Precast Box Beam Through Existing Expressway(GAO Wen-tao)
- 208 Main Points Analysis of Highway Bridge Construction(HUANG Yu)
- 210 Main Points Analysis of the Large Span Bridge Construction Technology(REN Chao)

### Project Management

- 213 The Importance of Modern Computer Technology in Municipal Engineering Management(CHEN Ting)
- 216 Some Experience in Project Management(ZHANG Zhi-ye)
- 218 Talk About Railway Project Material Management(JIN Chen)
- 221 Discussion on the Key Ideas in Highway Engineering Drawings Audit(XUE Peng)
- 223 EPC Practice and Management of Overseas Non-standard Equipment Project(DING Xing-guo)
- 227 Research on New Energy Photovoltaic Power Plant EPC General Contracting Mode(LIAN Song-tao)
- 229 Road and Bridge Construction Engineering Quality Supervision Control Points Analysis (ZHAO Lan-ye)
- 232 Study on Problems and Countermeasures in Maintenance and Management of Road and Bridge(CHEN Yu-ting)
- 234 Research and Application Progress of the Reactive Powder Concrete(XIAO Rui)
- 237 Discussion on the Main Points of Calculation of Highway Engineering Budget(JIA Li-yan, YANG Su)

### INFORMATION

- 03 "Reserve percentage of project quality margin reduced to 3%" Etc. 15

### COVER PERSON

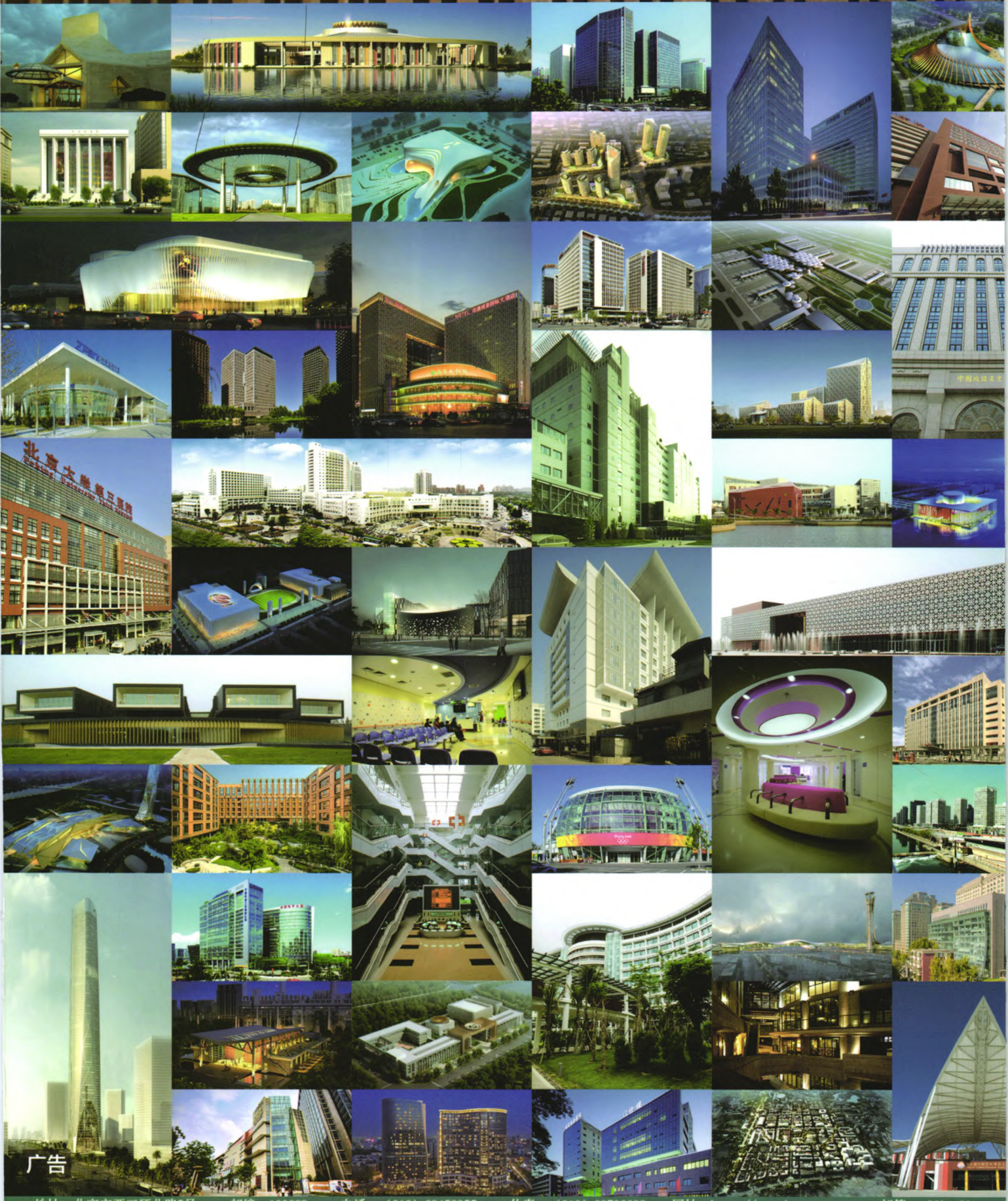
- 08 New and High Technology Leads the Development of Architecture Design Industry

### FORUM

- 12 The Integration of Cultural Protection in the Construction of Cultural Tourism Scenic Spots
- 16 Based on 3D Digital Design Helps Solar Projects
- 19 The Development and Application of Electrical Designer 3D Design Software
- 22 Development And Application of Quantity Take-off Management Based on Bentley 3D Design Model



**中国中元国际工程有限公司**  
CHINA IPPR INTERNATIONAL ENGINEERING CO., LTD.



广告

地址：北京市西三环北路5号 邮编：100089 电话：(010) 68458355 传真：(010) 68732688 网址：<http://www.ippr.com.cn> 邮箱：[office@ippr.net](mailto:office@ippr.net)