



工程建设与设计

主办单位: 国家机械工业局工程建设中心 中国机械工业勘察设计协会 中国中元国际工程有限公司 CN 11-3914/TU 2017年第12月下 总第374期



ISSN 1007-9467



9 771007 946103

建筑与结构设计

- 1 建筑给排水设计施工常见问题及解决(刘剑)
- 3 探析基于塑造城市特色的小城镇城市设计(丁明晖)
- 5 论钢铁企业总图运输设计(李慧慧)
- 7 基于和谐思想的写意设计方式在现代景观设计中的应用浅析(于家涛)
- 11 云南某医院消毒供应中心无菌物品库室内环境存在问题分析及整改措施(王庆昌)
- 14 张弦梁采光顶预应力索施工分析(石璞莉)
- 17 建筑设计中绿色建筑设计理念的整合应用探究(李向阳)
- 19 某大型商业综合体防排烟系统设计探讨(周海艳)
- 21 蓄水排水技术在绿色屋顶中的创新设计(马伟涛,杨春,刘军,李聪,李栋梁,付宏伟)
- 23 印象之栖居:人文视角下的展示空间(朱宝杨)

基础工程设计

- 25 公路路基施工的重要性及细节分析(翟振辉)
- 27 建筑联合体整体平移的基础处理技术分析探讨(牛彦玲)
- 29 高填方岩土工程设计策略探讨(龙佰维)
- 31 浅析盾构机开挖面压力的计算、调节与控制(乔姗)
- 33 围岩量测信息化在隧道施工中的应用(赵云)
- 36 新生代玄武岩地区供水井成井工艺浅析(何海刚)
- 38 临近既有城市轨道交通工程的基坑施工影响分析(杨庆刚)
- 41 漂卵石地层地铁深基坑围护结构灌注桩旋挖施工(任跃勤)
- 45 防空洞注浆加固效果检测方法的探讨(钟晟)
- 47 复杂环境下地铁深基坑施工动态监测及应用(王澍)
- 49 论复杂地形——膨胀岩区域的基坑监测(石百军)
- 52 某地铁站深支护设计及地下水处理措施(何训正)
- 54 构皮滩通航建筑物大直径人工深挖孔灌注桩施工工艺(杨庆喜,黄益彬)

公用工程设计

- 56 220kV输电线路安全运行影响因素及维护策略分析(康久兴)

- 58 卫星通信系统在流域大型梯级电站通信系统中的设计与应用(胡恒)
- 61 某公司燃机扩建工程循环水系统冷端优化(王建东,付涛)
- 63 600MW机组捞渣机自动调速的研究与应用(孙宇)
- 65 IRWST非能动排气盖流量性能试验及数值模拟(张玉,黄祥明,张星亮,关岭松,宋春景)
- 68 闭式水源热泵空调系统制冷工况分析(陆浩华,邓晓刚)
- 70 基于输电设备检修费用的状态检修策略研究(赵峥,葛风雷,薛英林)
- 72 1000kV特高压输电线路防雷工程设计研究(梁晓东)
- 74 智能变电站光缆规范化标识设计技术研究(张光骏,李建华,宋晓宁)
- 76 架空送电线路导线电气距离的公式计算方法(缪晓宇)
- 78 备用电源自动投入系统的设计与应用(张展翅)
- 80 电动机运行过程中常见故障及解决方案(闫晓燕)
- 82 城市中压配电网工程规划设计及其优化研究(李爽)

市政·交通·水利工程设计

- 84 新型混凝土连续生产系统分析(周杰)
- 86 道路桥梁设计隐患问题及完善措施(王淑芳)
- 88 公路施工组织设计应重点关注的问题探讨(杨晓)
- 90 浅谈城市枢纽立交改造总体设计(张文标)
- 92 公路路线设计中存在的问题及要点研究(万兵)
- 94 特长铁路隧道承压水对整体道床病害原因分析与处治技术探讨(杨跃强)
- 97 沥再生在G204(嘉松北路—沪苏界)改建段中的应用(张亮)
- 99 结构化设计在道路桥梁设计中的应用(张瑞斌)
- 101 对公路路基路面排水设计的探讨(张力)
- 103 GPS技术在水利工程测量中的应用(葛存扣,金红刚)
- 105 朔黄铁路温塘河特大桥0号桥台病害分析及治理研究(张良山)
- 109 水闸混凝土裂缝成因及防治措施(周建新,周红芹)
- 111 沥青路面路基工作区深度分析(王宗璞)
- 113 城市道路与公路衔接形成异形交叉口交通管理方法研究(吴彦宁,叶祎博,马雪兰)
- 116 公路桥梁施工中钻孔灌注桩质量控制措施(朱喜荣)
- 118 市政道路桥梁与桥梁施工质量现状(郭继祥)

- 120 东湖水厂南湖北路转压站经济运行探讨 (吴军)
- 122 公路工程路桥过渡段施工质量控制分析 (张韶波)
- 124 工程地质勘察中水文地质问题的重要性分析 (王进良)
- 126 浅谈甬金铁路桥涵水文调查与计算分析 (何波)
- 128 公路工程沥青混凝土路面工程施工重点难点分析 (宋学良)

制造工程设计

- 130 JLJM—1型机车轮缘减磨棒摩擦磨损性能试验机的研究
(李瑞伟, 冯如林, 吉林, 黄晓梅, 郭兵)

能源工程设计

- 132 民用航空支线机场能耗特性分析 (朱思平)

环境工程设计

- 134 混合电镀废水处理系统的优化及运行效果研究 (李亚男, 王小林)
- 136 垃圾渗滤液处理零排放实践 (郑超)

工程施工技术

- 138 沥青路面施工工艺的主要问题及改进对策 (李勇强)
- 140 路桥施工技术应用及质量控制策略 (赵德刚)
- 142 高速公路桥梁高墩柱施工技术分析 (袁广学)
- 145 论防水工程的施工材料和管理 (张钧)
- 147 工程现场自密实混凝土配比设计研究 (黄勇, 王新宇)
- 149 浅谈水利水电工程基础处理施工技术 (雷少雄)
- 151 大直径盾构穿越城市主干道的安全施工技术 (吴建军, 聂华)
- 153 航道疏浚工程中的施工技术研究分析 (于南洋)
- 155 浅谈公路工程路基施工质量控制技术 (杨国清)
- 157 超高压线下城市轨道交通现浇梁施工安全防护体系浅析
(王波, 张立军, 章昊)
- 160 浅谈复杂地层钢围堰施工方法 (曹绍渤, 高明慧)
- 162 浅谈岩棉保温一体板湿贴法施工技术
(朱春林, 李文斌, 叶炜)

- 165 关于现代公路施工技术难点的分析研究 (刘付欣)

工程项目管理

- 168 成本动态控制在公路工程中的应用 (刘彦彦)
- 170 BIM技术在工程管理中的应用价值 (李燕燕)
- 172 工程项目管理中PPP模式发展的现状、问题与对策 (郝泽强)
- 174 基于工程量清单计价模式下的国际工程投标报价研究 (徐方)
- 176 公路工程项目招投标成本价控制方法研究 (赵付安)
- 178 沥青路面施工质量控制技术分析 (王立权)
- 180 质量监督在海南—乌达一级公路创优工程的探讨 (乔志海)
- 182 施工总承包管理的发展思路探讨 (王峥)
- 184 基于AHP的绿色施工评价方法研究 (陈培源)
- 186 清单计价在铁路工程招投标的应用 (颜蓓蓓)
- 188 加强工程试验检测在工程质量管理中的作用 (包洪波)
- 190 酒店装修工程成本管理的构成、特点及影响因素分析
(唐文君)
- 192 铁路营业线施工安全管理的探索 (张喜河)
- 194 关于工程索赔的一点见解 (贾钰仁)
- 196 东滩煤矿六采区无轨胶轮车辅助运输系统研究与应用 (王鹏)
- 199 铁路物流基地运输组织决策辅助系统研究
(张明杰, 郭宏伟, 赵梦, 王静, 崔高峰)
- 203 基于项目管理的风景园林工程虚拟实验项目建设研究
(冯焯, 何丽波, 胥应龙, 曹盼)
- 205 提高公路工程施工管理的措施分析 (蔡永香)
- 207 桥梁施工安全管理研究 (李宣, 彭高川, 黄一舟)

智能与信息化

- 209 基于Surpac Vision软件的煤田火区三维建模 (陈越锋)
- 211 BIM技术在《混凝土结构平法识图》课程中的应用探索 (邢彤)
- 213 BIM在地铁工程施工管理中的应用研究 (章俊, 彭维达)
- 215 BIM技术在幕墙工程中集成化应用 (谢荣辉, 鲁飞)
- 217 变电站巡检机器人应用与技术分析 (杨从赞, 钱平, 徐嘉龙)
- 219 工程测量中现代测绘技术的应用 (刘石栋, 赵岩, 凌晓春)

Architectural and Structural Design

- 1 Common Problems of Building Water Supply and Drainage Design and Construction and the Solutions(LIU Jian)
- 3 Discussion on the Urban Design Based on Building the Small Towns with City Characteristics(DING Ming-hui)
- 5 Discussion on the General Layout and Transportation Design of Iron and Steel Enterprises(LI Hui-hui)
- 7 Analysis of the Application of Freehand Design Based on Harmonious Thought in Modern Landscape Design(YU Jia-tao)
- 11 Analysis of the Problem Existing in the Indoor Environment of Aseptic Materials Warehouse of a Hospital CSSD in Yunnan Province and Its Improvement Measures(WANG Qing-chang)
- 14 The Construction Analysis of Prestressed Cable of Beam String Lighting Roof(SHI Ying-li)
- 17 The Integrated Application of Green Building Design Concept in Architectural Design(LI Xiang-yang)
- 19 Design of Smoke Control System for a Large Commercial Complex(ZHOU Hai-yan)
- 21 Innovative Design of Water Storage and Drainage Technology in Green Roof(MA Wei-tao, YANG Chun, LIU Jun, LI Cong, LI Dong-liang, FU Hong-wei)
- 23 Impression Residence: Exhibition Space Under the View of Humanistic(ZHU Bao-yang)

Engineering Design of the Ground

- 25 The Importance and Detail Analysis of Highway Roadbed Construction(ZHAI Zhen-hui)
- 27 Analysis on the Foundation Processing Technology of Building Group Monolithic Movement(NIU Yan-ling)
- 29 Discussion on Design Strategy in High-Fill Geotechnical Engineering(LONG Bai-wei)
- 31 Calculation, Adjusting and Control of Excavated Surface Pressure of Shield Machine(QIAO Shan)
- 33 The Application of Surrounding Rock Informationization Measurement in Tunnel Construction(ZHAO Yun)
- 36 Well-Forming Technology of Water Supply Well in Cenozoic Basalt Area(HE Hai-gang)
- 38 Influence of Foundation Pit Construction on Adjacent Existing Urban Rail Transit Engineering(YANG Qing-gang)
- 41 Rotary Excavation Construction of Bored Pile of Subway Deep Foundation Retaining Structure in Drift Cobble Stratum(REN Yue-qin)
- 45 Discussion on the Detecting Method of the Grouting Reinforcement Effect of Air-Raid Shelter(ZHONG Sheng)
- 47 Dynamic Monitoring of Subway Deep Foundation Construction in Complex Environment and Its Application(WANG Shu)
- 49 The Foundation Monitoring in the Complex Terrain as Swelling Rock Area(SHI Bai-jun)
- 52 The Design of Deep Foundation Pit and Groundwater Treatment in a Subway Station(HE Xun-zheng)
- 54 The Construction Technology of Large Diameter Artificial Deep Digging Cast-in-Place Pile of Navigation Structure in Goupitan Hydropower Station(YANG Qing-xi, HUANG Yi-bin)

Public Utilities Design

- 56 Analysis of the Influencing Factors of Safe Operation of 220 kV Transmission

- Line and the Maintenance Strategy(KANG Jiu-xing)
- 58 The Design and Application of Satellite Communication System in Communication System of Large Cascade Hydropower Stations(HU Heng)
- 61 Cold End Optimization of Circulating Water System in the Gas Turbine Expansion Project of a Company(WANG Jian-dong, FU Tao)
- 63 Research and Application of Automatic Speed Adjustment of Slag Collecting Machine for 600 MW Unit(SUN Yu)
- 65 IRWST Passive Vent Cover Flow Performance Test and Numerical Simulation(ZHANG Yu, HUANG Xiang-ming, ZHANG Xing-liang, GUAN Ling-song, SONG Chun-jing)
- 68 Analysis of the Closed Water Source Type Heat Pump Air Conditioning System Under the Refrigeration Condition(LU Hao-hua, DENG Xiao-gang)
- 70 Condition-Based Maintenance Strategy Based on the Maintenance Cost of Power Transmission Equipment(ZHAO Zheng, GE Feng-lei, XUE Ying-lin)
- 72 Research on the Lightning Protection Engineering Design of 1000kV UHV Transmission Line(LIANG Xiao-dong)
- 74 Technical Study on Standardized Identification of Optical Cable in Smart Substation(ZHANG Guang-tao, LI Jian-hua, SONG Xiao-ning)
- 76 Formula Calculation Method of Electrical Distance of Overhead Transmission Line Conductor(MIAO Xiao-yu)
- 78 Design and Application of Standby Power Automatic Input System(ZHANG Zhan-chi)
- 80 Common Faults in the Process of Electric Motor Operation and the Solutions(YAN Xiao-yan)
- 82 Study on Planning and Design of Urban Medium Voltage Distribution Network and Its Optimization(LI Shuang)

Municipal · Traffic · Water Resources Engineering Design

- 84 Analysis of New Concrete Continuous Production System(ZHOU Jie)
- 86 The Potential Problem of Road and Bridge Design and the Improvement Measures(WANG Shu-fang)
- 88 Discussion on the Problems of Highway Construction Organization Design(YANG Xiao)
- 90 General Design of Urban Hub Interchange Transform(ZHANG Wen-biao)
- 92 Problems and Key Points of Highway Route Line Design(WAN Bing)
- 94 Causes of Ballast Bed Disease Caused by Confined Groundwater of Extra Long Railway Tunnel and Treatment Technology(YANG Yue-qiang)
- 97 The Application of RejuvalSeal™ in the G204 (North Jiasong Road to Shanghai & Jiangsu Boundary) Reconstruction Section(ZHANG Liang)
- 99 The Application of Structured Design in Road and Bridge Design(ZHANG Rui-bin)
- 101 Discussion on the Drainage Design of Highway Subgrade and Pavement(ZHANG Li)
- 103 The Application of GPS Technology in Water Conservancy Engineering Survey(GE Cun-kou, JIN Hong-gang)
- 105 Research on the Disease and Treatment Scheme of No.0 Abutment of Wengtang River Bridge in ShuoHuang Railway(ZHANG Liang-shan)
- 109 Causes and Prevention Measures of Concrete Cracks in Sluice(ZHOU Jian-xin, ZHOU Hong-qin)
- 111 Depth Analysis of Asphalt Pavement Subgrade Working Area(WANG Zong-pu)
- 113 Research on Traffic Management Method of Irregular Intersection Between the City Road and the Highway(WU Yan-ning, YE Wei-bo, MA Xue-lan)
- 116 Quality Control Measures of Bored Cast-in-Place Pile in Highway Bridge

- Construction(ZHU Xi-rong)
- 118 Municipal Road and Bridge and the Status Quo of Bridge Construction Quality (GUO Ji-xiang)
- 120 Economic Operation of Nanhu North Road Pressure Transfer Station of Donghu Waterworks(WU Jun)
- 122 Analysis of Construction Quality Control of Transition Section of Highway Engineering(ZHANG Shao-bo)
- 124 Importance Analysis of Hydrogeology in Engineering Geological Survey (WANG Jin-liang)
- 126 Introduction to the Hydrological Investigation and Calculation Analysis of YongJin Railway Bridge(HE Bo)
- 128 Analysis of the Keys and Difficulties in Asphalt Concrete Pavement Construction of Highway Engineering(SONG Xue-liang)

Manufacture Engineering Design

- 130 Research on the Wear Performance Tester of Antifriction Rods for JLJM-1 Locomotive Wheel Rim(LI Rui-wei, FENG Ru-lin, JI Lin, HUANG Xiao-mei, GUO Bing)

Energy Engineering Design

- 132 Analysis of Energy Consumption Characteristics of Civil Aviation Feeder Airport(ZHU Si-ping)

Environment Engineering Design

- 134 Study on the Optimization and Operation Effect of Mixed Electroplating Wastewater Treatment System(LI Ya-nan, WANG Xiao-lin)
- 136 Practice of Zero Discharge in Landfill Leachate Treatment(ZHENG Chao)

Construction Technology

- 138 The Main Problems of Asphalt Pavement Construction Technology and Improving Countermeasures(LI Yong-qiang)
- 140 The Application of Road and Bridge Construction Technology and the Quality Control Strategy(ZHAO De-gang)
- 142 The Construction Technology of High Pier of Highway Bridge (YUAN Guang-xue)
- 145 Discussion on the Construction Material and Construction Management of Waterproof Engineering(ZHANG Jun)
- 147 Study on Proportion Design of Self-Compacting Concrete in Engineering Site (HUANG Yong, WANG Xin-yu)
- 149 Discussion on the Construction Technology of Foundation Treatment of Water Conservancy and Hydropower Engineering(LEI Shao-xiong)
- 151 Safety Construction Technology of Large Diameter Shield Passing Through Urban Main Road(WU Jian-jun, NIE Hua)
- 153 Study on the Construction Technology of Waterway Dredging Project (YU Nan-yang)
- 155 Subgrade Construction Quality Control Technology of Highway Engineering (YANG Guo-qing)
- 157 Construction Security System of Urban Rail Transit Cast-in-Site Beam of Ultra-High-Voltage Power Lines(WANG Bo, ZHANG Li-jun, ZHANG Hao)
- 160 Discussion on the Construction Method of Steel Cofferdam in Complex Formation(CAO Shao-bo, GAO Ming-hui)
- 162 Talking About the Wet Pasting Construction Technology of Rockwool Thermal Insulation Board(ZHU Chun-lin, LI Wen-bin, YE Wei)

- 165 Analysis and Research of the Technical Difficulties of Modern Highway Construction(LIU Fu-xin)

Project Management

- 168 The Application of Cost Dynamic Control in Highway Engineering (LIU Yan-yan)
- 170 The Application Value of BIM Technology in Project Management(LI Yan-yan)
- 172 The Present Situation, Problems and Countermeasures of PPP Mode Development in Engineering Project Management(HAO Ze-qiang)
- 174 Study on Bidding Quotation of International Project Based on Valuation Model of BOQ(XU Fang)
- 176 Cost Control Method of Highway Engineering Project Bidding(ZHAO Fu-an)
- 178 Technical Analysis of Quality Control of Asphalt Pavement(WANG Li-quan)
- 180 Discussion on the Quality Supervision in Hai'nan to Wuda First-Level Highway Excellence Engineering(QIAO Zhi-hai)
- 182 Discussion on the Development of Construction General Contracting Management(WANG Zheng)
- 184 Research on the Green Construction Assessment Based on AHP Method (CHEN Pei-yuan)
- 186 The Application of List Pricing in Railway Engineering Bidding(YAN Bei-bei)
- 188 The Role of Strengthening the Engineering Test Detection in Engineering Quality Management(BAO Hong-bo)
- 190 The Composition, Characteristic and Affecting Factors of Cost Management in Hotel Decoration Project(TANG Wen-jun)
- 192 Exploration of Safety Management of Railway Business Line Construction (ZHANG Xi-he)
- 194 Thoughts About Project Claims(JIA Yu-ren)
- 196 Research and Application of Auxiliary Transportation System of Trackless Rubber Wheel Vehicle in No. 6 Mining Area of Dongtan Coal Mine(WANG Peng)
- 199 Research on Transport Organization Decision-Making Assistance System of Railway Logistics Base(ZHANG Ming-jie, GUO Hong-wei, ZHAO Meng, WANG Jing, CUI Gao-feng)
- 203 The Virtual Experiment Construction Project of Landscape Architecture Engineering Based on Project Management (FENG Ye, HE Li-bo, XU Ying-long, CAO Pan)
- 205 Analysis of the Measures to Improve the Construction Management of Highway Engineering(CAI Yong-xiang)
- 207 Research on Safety Management of Bridge Construction(LI Xuan, PENG Gao-chuan, HUANG Yi-zhou)

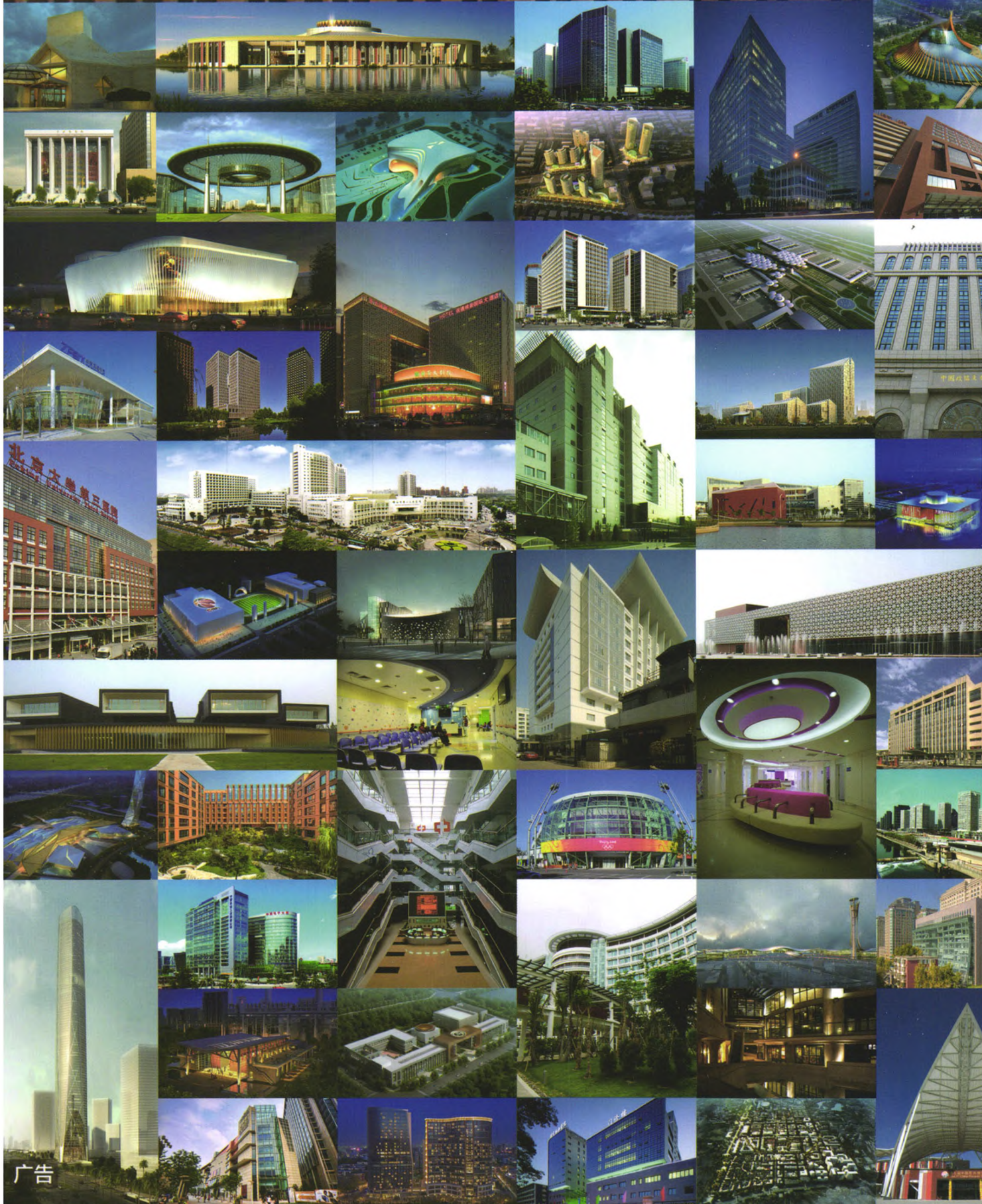
Intelligentize and Informatization

- 209 3D Modeling of Fire Area in Coal Field Based on the Software of Surpac Vision(CHEN Yue-feng)
- 211 The Application of BIM Technology in the Course of "Recognizing Concrete Structure Using Plan Method"(XING Tong)
- 213 Research on the Application of BIM in Subway Engineering Construction Management(ZHANG Jun, PENG Wei-da)
- 215 The Integrated Application of BIM Technology in Curtain Wall Project (XIE Rong-hui, LU Fei)
- 217 The Application and Technical Analysis of Substation Inspection Robots (YANG Cong-zan, QIAN Ping, XU Jia-long)
- 219 The Application of Modern Surveying and Mapping Technology in Engineering Survey(LIU Shi-dong, ZHAO Yan, LING Xiao-chun)



中国中元国际工程有限公司

CHINA IPPR INTERNATIONAL ENGINEERING CO., LTD.



广告

地址：北京市西三环北路5号 邮编：100089 电话：(010) 68458355 传真：(010) 68732688 网址：<http://www.ippr.com.cn> 邮箱：office@ippr.com.cn

万方数据
标准刊号

ISSN1007-9467
CN11-3914/TU

广告许可证号：京海工商广字第 8214 号 邮发代号：82-847 定价：20.00 元 / 期 480.00 元 / 年