

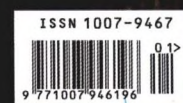


工程建设与设计

国家机械工业局工程建设中心 中国机械工业勘察设计协会 中国中元国际工程有限公司 CN 11-3914/TU 2019 年第01月上 总第399期



利国际广场
京市建筑设计研究院有限公司
万方数据



动态资讯

- 07 “住建部：开展建筑师负责制，提高建筑师地位”等信息
10则

信息化

- 10 2018年中国机械工业勘察设计协会技术质量年会召开
11 “共享机遇、开创未来”——2018中国工程采购大会开幕

论坛

- 12 基于网络智能化管理沥青路面施工技术
16 谈BIM技术在土建类高职院校的推广和应用

建筑与结构设计

- 19 基于生态理念的建筑设计原理及设计方法研究（李冰峰，李冬梅）
22 绿色移动建筑对留守儿童文娱建设的作用探讨（葛琴，曾琳，杨华斌）
24 广告牌钢结构抗风能力校验（于水）
27 温州都市区视角下浙江平阳县昆阳镇城东新区新型城镇化规划思考（邢涛，宋旭东）
31 别墅外环境的营造——以大连圣北蓝湾项目为例（刘琳）
34 建筑设计中基础梁的结构处理研究（张志强，贾洪亮）
36 泡沫回填土作用下无柱大跨地铁车站受力特征分析（胡双平）
40 住宅小区地下室人防建筑设计研究（张旭）
42 房地产绿色建材供应链构建及建材绿色度评价模型（曲鹏）

- 45 BIM在建筑结构设计中的应用（刘浩然）
47 建筑被动式节能设计研究（王峰，谢海霞）

基础工程设计

- 50 桩基托换中顶升荷载对新旧结构的影响研究（何伟，康延铭，张健，徐志军）
53 公路路基设计中常见问题分析及对策研究（腊润涛）
56 软弱土层条件沉淀池基坑开挖与回填数值分析（王戡）
58 水利工程项目施工中软土地基及强透水层处理措施（张陆明）
61 声波透射法检测地下连续墙时声测管布置方式研究（梁金福，李梅，林宁）
63 群桩基础-土作用非线性有限元分析（刘哲圆，吴景科）
66 超宽深基坑内支撑换撑优化方案探讨（郑其波，李海）
69 超低温环境下锚固区锚垫板传力性能分析（孙发军，吴志勇，刘进）
72 预装式变电站接地系统设计研究（王辉，王辉君，顾逸飞）
74 光伏发电在玉龙县一碗水村抗旱饮水工程中的设计应用（任礼伟，鱼路焕，李文勇）
77 浅析农村污水管道的类型与选择（徐挺挺）
79 污水处理厂电气控制设计及节能措施探讨（赵琦）
83 港口消防给水的相关设计应用（姚远）
86 物流货运站排水及消防设计（林晨星）
88 超大规模地铁地下停车场消防设计研究（武鹏飞）

市政·交通·水利工程设计

- 91 超大型钢围堰主墩测量定位技术（丁飞，余国顺，张光宇，关叶沆）
94 公路路基检测方法分析与试验研究（仲佳）
97 穿越大型溶洞段隧道围岩应力转换及支护结构受力分析（胡昆昆）
100 高速铁路和城际铁路车站站台门设置必要性研究（孙晓亮）
103 深圳市龙岗区治水提质整体策略分析（王礼兵，王晓，容义平，郭佳）
106 考虑材料非线性的悬索桥主索鞍有限元计算方法（陈远林，黄安明，陈龙）
109 当前青海省高速公路养护存在的问题及解决措施（吴卫良）
112 跨海大桥钢管桩基础试桩成果分析（田达光）
115 平原区低路基高速公路设计探讨（秘向博）
117 红沙岗330kV送出工程水土保持防治效果分析与评价（刘雪峰）
120 公路路线设计的一体化与可视化（杨洁）
123 某高铁下穿公路桥围护桩支护方案安全性分析（安延伟，王永彬）

- 125 梯形悬臂板箱形截面扭心位置的确定 (蔡政标)
- 128 铁路简支T梁架设方案比选与成本分析 (王双合)
- 130 试论现代化公路桥梁设计的创新理念 (栾好发)
- 133 重力式码头沉降位移的应对措施分析 (张志聪)
- 136 路线设计中停车视距要求下的竖曲线半径计算 (梁素平)
- 138 小湾水电站大坝安全管理综述 (李洪波, 郑涵)
- 141 地铁1号线厦门北站改造方案及客流组织的思考 (朱雄涛)
- 143 厦门五缘湾换乘车站建筑形式选定 (曾桃桃)
- 146 山区公路弃土场选址及其设计方式分析 (姜吉湘, 邢鹏远, 田强)
- 148 谈城市道路路基路面的设计和施工方法 (戴峰)
- 151 水资源论证中的两项关键水文技术分析 (田少坤, 郭月亮)
- 153 城市轨道交通设计阶段若干问题分析 (陈君涛)
- 156 基于生态保护的道路边坡设计 (罗玉娇)
- 158 基于BIM技术的市政道路设计研究 (肖新波, 李汉锋)
- 161 多跨高低墩连续刚构桥主梁合龙顶推力取值方法 (徐长春)
- 164 高速铁路混凝土连续曲线梁桥在ZK竖向静活载作用下的曲线半径变化对梁体扭转的影响 (何林焜, 曾理勇, 吴凯)
- 167 谈城市综合管廊建设阶段的注意事项 (吕瑞云)

制造工程设计

- 170 对压力容器制造监检中常见问题的探讨 (邱希光)

环境工程设

- 172 港口含油污水的相关收集 (张磊)
- 175 谈农村生活污水治理建设 (应武伟)

智能与信息化

- 178 建筑工程项目集成管理中BIM技术的应用 (吴振付)
- 180 基于CAD-VBA的供暖热负荷延续时间图绘制软件的编制 (王宏博, 李莹璇)
- 186 基于Matlab的桥梁裂缝自动识别技术研究 (杜江梅, 段文红)
- 189 高速公路沥青路面智能压实系统应用研究 (段文红, 高国红, 石明)
- 191 卫浴装置在Revit跨专业链接协作中的解决方案研究 (张可心, 田芮利, 丁赛, 曹征, 李冰瑶)
- 194 基于GIS的数字城市地理空间框架建设探讨 (袁勇)
- 196 BIM技术在建筑工程设计中的应用优势 (张芸)

工程施工技术

- 199 复杂地质条件下铁路隧道施工技术探讨 (何永健)
- 201 关于临近既有线铁路爆破控制的分析 (陈传勇)
- 204 新建大瑞铁路怒江特大桥焊接工艺研究 (闫亚乐)

- 206 基于冲击弹性波的预应力孔道压浆饱满度检测方法及其适用范围研究 (石明, 韩永胜)
- 209 混凝土结构施工质量控制分析 (韦念儒)
- 211 高速公路隧道洞渣物理改良路基施工技术的应用 (万小强, 林筱平)
- 214 高边坡坍塌的综合处治方式 (张华, 彭世江)
- 216 软土路段地铁车站半盖挖深基坑施工技术 (吴超)
- 219 软土地基现浇箱梁支架施工关键技术 (胡运良, 史欢欢, 吴凯军, 李博汉)
- 221 谈煤尘污染隧道换轨组织及注意事项 (马少青)
- 224 强夯和液压夯综合应用在减少路堤沉降问题中的研究 (曹尤格)
- 226 城市道路沥青路面施工技术与质量控制分析 (游元德)
- 229 对建筑工程中的深基坑支护施工技术的思考 (李波)
- 234 地下室悬挑后浇底板的局部逆作施工技术 (汪庆豪)
- 231 地铁车站拱盖法暗挖技术研究 (张秀山)
- 236 钢柱安装高精度控制措施 (张钧祥)
- 239 冶金设备安装调试要点分析 (张麒)
- 241 级配碎石基层施工技术在道路工程中的应用分析 (郑忠照)
- 244 装配式建筑剪力墙注浆施工工艺试验研究 (纪方, 王兴云)
- 246 铁路跨高速公路设临时支墩架设箱梁施工技术 (王培传)

工程项目管理

- 249 海外工程项目跨文化管理问题的探讨 (张家伟)
- 251 论施工技术管理在建筑工程中的重要性思考研究 (林君伟)
- 253 公路工程档案的跟踪收集管理尝试 (梁红垒)
- 255 长沙地铁收尾结算中审计存在的问题与对策 (文靓)
- 258 试论不动产权籍一体化管理 (宋天舒)
- 260 工程项目精细化管理 (李恩道)
- 263 建筑安装工程造价影响因素及措施探索构架 (李子红)
- 265 高速公路桥梁施工安全生产管理研究 (张守全)
- 268 公路施工安全管理工作中存在的问题分析及对策 (王志宏)
- 270 谈公路施工企业创新发展新动能 (穆洁)
- 273 如何做好公路施工质量管理实践 (曹岗)
- 275 房建工程施工管理中精细化管理的运用 (王舜)
- 278 港区综合管网工程质量控制要点 (张会烈, 赵云鹏)
- 280 公路工程管理中现场施工管理的具体实践 (梁国玉)

INFORMATION

- 07 "Ministry of Housing and Urban-Rural Development : Developing the Architect Responsibility System and Improving the Status of Architects" Etc. 12

INFORMATIZATION

- 10 Annual Conference on Technical Quality of China Machinery Industry Survey and Design Association 2018 was held
- 11 "Sharing Opportunities & Creating Future" of China Engineering Procurement Conference 2018 was held

FORUM

- 12 Construction Technology of Asphalt Pavement Based on Network Intelligent Management
- 16 Promotion & Application of BIM Technology in Higher Vocational Colleges of Civil Engineering

Architectural and Structural Design

- 19 Study on Principles and Design Methods of Architectural Design Based on Ecological Concept (LI Bing-feng, LI Dong-mei)
- 22 Discussion on the Role of Green and Mobile Building in the Entertainment Construction of Left Behind Children (GE Shen, ZENG Lin, YANG Hua-bin)
- 24 Billboard Steel Structure Wind Resistance Verification (YU Shui)
- 27 Thinking of the New Urbanization Planning of Kunyang Town, East New District of Pingyang County Under the Perspective of Wenzhou Metropolitan Area (XING Tao, SONG Xu-dong)
- 31 The Design of the Villa Environment——Taking the Shengbei Blue-Bay Project as an Example (LIU Lin)
- 34 Research on Structural Treatment of Foundation Beam in Architectural Design (ZHANG Zhi-qiang, JIA Hong-liang)
- 36 The Mechanics Characteristic Analysis of the Large Span Subway Station Without Pillars Under the Bubble Back-Filling (HU Shuang-ping)
- 40 Research on the Design of Civil Defense Buildings in Basement of Residential District (ZHANG Xu)
- 42 The Material Supply Chain Construction of Real Estate Green Building and the Green Degree Evaluation Model of Building Material (QU Peng)
- 45 The Application of BIM in Building Structure Design (LIU Hao-ran)

- 47 Research on Passive Energy Saving Design of Buildings (WANG Feng, XIE Hai-xia)

Engineering Design of the Ground

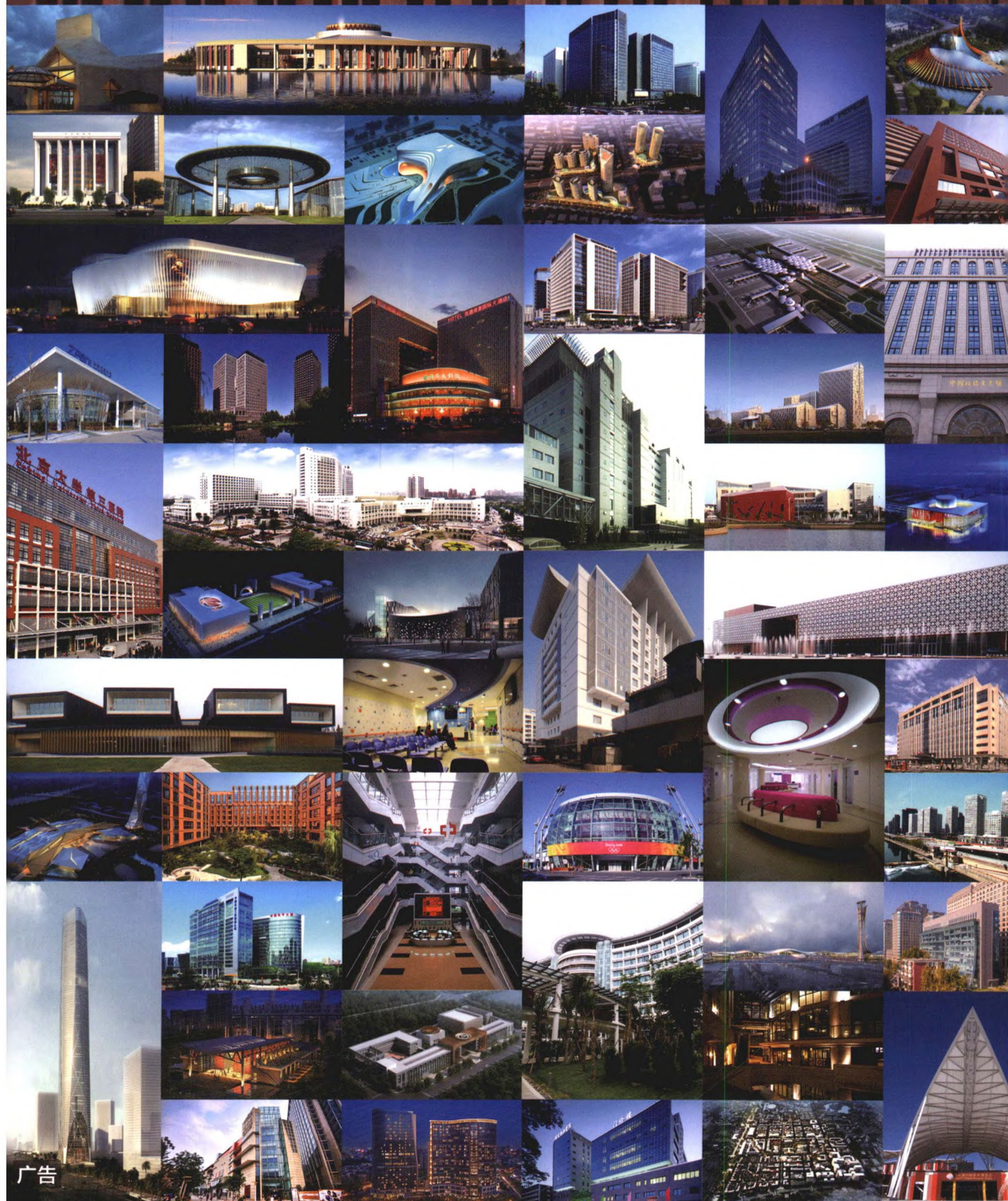
- 50 The Influence of the Jacking Load on the New and Old Structures in the Process of Pile Foundation Underpinning (HE Wei, KANG Yan-ming, ZHANG Jian, XU Zhi-jun)
- 53 Analysis and Countermeasures of Common Problems in Roadbed Design (LA Run-tao)
- 56 Numerical Analysis of Excavation and Backfilling of Sedimentation Basin Foundation Pit Under Soft Soil Conditions (WANG Kan)
- 58 Treatment Measures of Soft Soil Foundation and Strong Permeable Layer in Water Conservancy Project Construction (ZHANG Lu-ming)
- 61 Study on the Arrangement Method of Sonic-Testing Tubes for Detecting Underground Diaphragm Wall by Cross-Hole Sonic Logging (LIANG Jin-fu, LI Mei, LIN Ning)
- 63 Nonlinear Finite Element Analysis of Pile Group Foundation and Soil Action (LIU Zhe-yuan, WU Jing-ke)
- 66 Discussion on the Optimization Scheme of Support Changing in the Ultra-Wide Deep Foundation Pit (ZHENG Qi-bo, LI Hai)
- 69 Analysis of Force Transmission Performance of Anchor Bearing Plate in Ultra-Low Temperature Anchorage Zone (SUN Fa-jun, WU Zhi-yong, LIU Jin)
- 72 Research on the Grounding System Design of the Prefabricated Substation (WANG Hui, WANG Hui-jun, GU Yi-fei)
- 74 Design and Application of Photovoltaic Power Generation in Yiwanshui Village of Yulong County Water and Drought Resistant Drinking Water Project (REN Li-wei, YU Lu-huan, LI Wen-yong)
- 77 Analysis of the Types and Selection of Rural Sewage Pipelines (XU Ting-ting)
- 79 Analysis of Control System and Energy-Saving Measures in Sewage Treatment Plant (ZHAO Qi)
- 83 Design and Application Related to the Firefighting Water Supply Related of the Port Engineering (YAO Yuan)
- 86 The Design of Fire Protection and Water Drainage for Logistics Warehouse (LIN Chen-xing)
- 88 Research on Fire Protection Design of Super Large Scale Underground Parking Lot of Subway (WU Peng-fei)

Municipal Traffic Water Resources Engineering Design

- 91 Surveying and Locating Technology of Main Pier of Super Large Steel Cofferdam (DING Fei, YU Guo-shun, ZHANG Guang-yu, GUAN Ye-hang)
- 94 Analysis and Experimental Research on Highway Subgrade Detection Methods (ZHONG Jia)
- 97 Stress Transformation of Surrounding Rock and Stress Analysis of Supporting Structure of Tunnel Passing Through Large Karst Cave Section (HU Kun-kun)
- 100 Research on the Necessity of Setting Platform Screen Doors in High Speed Railway and Intercity Railway Stations (SUN Xiao-liang)
- 103 Analysis of Strategy on Pollution Control and Water Quality Improvement in Longgang District of Shenzhen City (WANG Li-bing, WANG Xiao, RONG Yi-ping, GUO Jia)
- 106 Finite Element Calculation Method of the Main Cable Saddle of Suspension Bridge Considering the Non-linear Material (CHEN Yuan-lin, HUANG An-ming, CHEN Long)
- 109 The Problems Existing in Current Qinghai Province Highway Maintenance and the Solutions (WU Wei-liang)
- 112 Analysis on Test Pile Results of Steel Pipe Pile Foundation of Sea-Crossing Bridge (TIAN Da-guang)
- 115 Discussion on Design of Low Subgrade Expressway in Plain Area (MI Xiang-bo)
- 117 Analysis and Evaluation of Soil and Water Conservation Control Effect of 330kV Transmission Project in Hongshagang (LIU Xue-feng)
- 120 Integration and Visualization of Highway Route Design (YANG Jie)
- 123 Analysis on the Safety of Fender Post Supporting Scheme for High Speed Railway Underpass Highway (AN Yan-wei, WANG Yong-bin)
- 125 The Position Calculation of Torsion Center of Box Section with Trapezoidal

- Cantilever Plate (CAI Zheng-biao)
- 128 Comparative Selection and Cost Analysis of Railway Simply Supported T Beam Erection Scheme (WANG Shuang-he)
- 130 Discussion on the Innovative Idea of Modern Highway Bridge Design (LUAN Hao-fa)
- 133 Analysis of Measures for Settlement Displacement of Gravity Wharf (ZHANG Zhi-cong)
- 136 Calculation of Vertical Curve Radius Under the Parking Sight Distance in Highway Design (LIANG Su-ping)
- 138 Summary of Dam Safety Management of Xiaowan Hydropower Station (LI Hong-bo, ZHENG Han)
- 141 The Reconstruction Project of Xiamen North Station of Metro Line 1 and the Thinking of Passenger Flow Organization (ZHU Xiong-tao)
- 143 The Selection of Architectural Form for the Xiamen Wuyuan Bay Transfer Station (ZENG Tao-tao)
- 146 Analysis of Site Selection and Design Method of Highway Waste Dump in Mountainous Area (JIANG Ji-xiang, XING Peng-yuan, TIAN Qiang)
- 148 The Design and Construction Methods of Urban Road Subgrade and Pavement (DAI Feng)
- 151 Analysis of Two Key Hydrological Techniques in Water Resources Demonstration (TIAN Shao-kun, GUO Yue-liang)
- 153 Analysis of Several Issues in the Design Stage of Urban Rail Transit (CHEN Jun-tao)
- 156 Design of Road Slope Based on Ecological Protection (LUO Yu-jiao)
- 158 Research on Municipal Road Design Based on BIM Technology (XIAO Xin-bo, LI Han-feng)
- 161 Method for Determining the Jacking Force of Closure of Continuous Rigid Frame Bridge with Multi-Span and High and Low Piers (XU Chang-chun)
- 164 The Effect of the Change of Curve Radius of High-Speed Railway Continuous Concrete Curved Bridges on the Torsion of Beam Body Under the Vertical Static and Live Load of ZK (HE Lin-kun, ZENG Li-yong, WU Kai)
- 167 Discussion on the Matters Needing Attention in the Construction Stage of Comprehensive Pipe Corridor (LV Rui-yun)
- Manufacture Engineering Design**
- 170 Discussion on Common Problems in the Supervision and Inspection of Manufacture of Pressure Vessels (QIU Xi-guang)
- Environment Engineering Design**
- 172 Related Collection of Oily Sewage in the Port (ZHANG Lei)
- 175 Discussion on Rural Sewage Treatment Construction in Rural Areas (YING Wu-wei)
- Intelligence and Information Technology**
- 178 The Application of BIM Technology in the Integrated Management of Construction Project (WU Zhen-fu)
- 180 Development of Software for Drawing Heating Thermal Load Continuation Time Diagram Based on CAD-VBA (WANG Hong-bo, LI Ying-xuan)
- 186 Research on Automatic Identification Technology of Bridge Crack Based on Matlab (DU Jiang-mei, DUAN Wen-hong)
- 189 Study on the Application of Intelligent Compaction System for Expressway Asphalt Pavement (DUAN Wen-hong, GAO Guo-hong, SHI Ming)
- 191 Research on the Solution of Bathroom Equipment in Revit Cross-Specialty link Collaboration (ZHANG Ke-xin, TIAN Rui-li, DING Sai, CAO Zheng, LI Bing-yao)
- 194 Research on the Construction of Digital City Geospatial Framework Based on GIS (YUAN Yong)
- 196 The Application Advantage of BIM Technology in Architectural Engineering Design (ZHANG Yun)
- Construction Technology**
- 199 Discussion on Construction Technology of Railway Tunnel Under Complex Geological Conditions (HE Yong-jian)
- 201 Analysis on Blasting Control of Railway Near Existing Line (CHEN Chuan-yong)
- 204 Research on Welding Technology of Newly Built Nuijiang Bridge in DaRui Railway (YAN Ya-le)
- 206 Research on Test Method and Applicable Range of Grouting Fullness of

- Prestressed Hole Based on Impact Elastic Wave (SHI Ming, HAN Yong-sheng)
- 209 Analysis of Construction Quality Control of Concrete Structures (WEI Nian-ru)
- 211 The Application of Construction Technology of Physical Improving Subgrade with Tunnel Slag in Expressway (WAN Xiao-qiang, LIN Xiao-ping)
- 214 Comprehensive Treatment of Collapse of High Slope (ZHANG Hua, PENG Shi-jiang)
- 216 Deep Foundation Pit Construction Technology of Half - Cover Excavation of Subway Station in Soft Soil Section (WU Chao)
- 219 Key Construction Technology of Cast-in-Place Box Girder Bracket for Soft Soil Foundation (HU Yun-liang, SHI Huan-huan, WU Kai-jun, LI Bo-han)
- 221 Discussion on the Rail Changing Organization and Matters Needing Attention in Coal Dust Polluted Tunnel (MA Shao-qing)
- 224 Research of Comprehensive Application of Dynamic Compaction and Hydraulic Tamping in Reducing Embankment Settlement (CAO You-ge)
- 226 Analysis of the Construction Technology and Quality Control of Urban Road Asphalt Pavement (YOU Yuan-de)
- 229 Thinking About the Construction Technology of Deep Foundation Pit Support in Construction Engineering (LI Bo)
- 231 Study on Underground Excavation Technology of Arch Cover Method in Subway Station (ZHANG Xiu-shan)
- 234 Partial Reverse Construction Technology of Cantilevered Floor in Basement (WANG Qing-hao)
- 236 High Precision Control Measures for Steel Column Installation (ZHANG Jun-xiang)
- 239 Analysis on Installation and Debugging of Metallurgical Equipment (ZHANG Qi)
- 241 Application Analysis of Graded Gravel Base Construction Technology in Road Engineering (ZHENG Zhong-zhao)
- 244 Experimental Study on Grouting Construction Technology of Shear Wall of Prefabricated Building (JI Fang, WANG Xing-yun)
- 246 Construction Technology of Box Girder by Setting Temporary Abutment Frame of the Railway Crossing the Highway (WANG Pei-chuan)
- Project Management**
- 249 Discussion on Cross-Cultural Management Problem of Overseas Engineering Projects (ZHANG Jia-wei)
- 251 Research on the Importance of Construction Technology Management in Construction Projects (LIN Jun-wei)
- 253 Attempt of Tracking Collection Management of Highway Engineering Archives (LIANG Hong-lei)
- 255 The Problems and Countermeasures of the Audit in the Final Settlement of Changsha Metro (WEN Liang)
- 258 Discussion on the Integrated Management of Property Rights and Household Registration of Real Estate (SONG Tian-shu)
- 260 Fine Management of Engineering Projects (LI En-dao)
- 263 Construction and Installation Project Cost Influencing Factors and Measures Exploration Framework (LI Yu-hong)
- 265 Research on the Safety Production Management of Expressway Bridge Construction (ZHANG Shou-quan)
- 268 Analysis and Countermeasures of Problems Existing in Highway Construction Safety Management (WANG Zhi-hong)
- 270 Discussion on the New Motivation of Innovation and Development of Highway Construction Enterprises (MU Jie)
- 273 How to do Well the Practice of Highway Construction Quality Management (CAO Gang)
- 275 The Application of Fine Management in Construction Management of Housing Construction Projects (WANG Shun)
- 278 Key Points of Quality Control of Integrated Pipe Network Project in Port Area (ZHANG Hui-lie, ZHAO Yun-peng)
- 280 Concrete Practice of Site Construction Management in Highway Engineering Management (LIANG Guo-yu)



广告

地址：北京市西三环北路5号 邮编：100089 电话：(010) 68458355 传真：(010) 68732688 网址：<http://www.ippr.com.cn> 邮箱：office@ippr.net