

国家新闻出版广电总局A类学术期刊 中国核心期刊(遴选)数据库 《中国学术期刊综合评价数据库》统计源期刊 《中国期刊(全文数据库)》《中国期刊网》全文收录期刊



# 工程建设与设计

办: 国家机械工业局工程建设中心 中国机械工业勘察设计协会 中国中元国际工程有限公司 CN 11-3914/TU 2020 年第 11 月上 总第 443 期



河南中医学院图书馆  
清华大学建筑设计研究院有限公司





**动态资讯**

01 “构建‘1+3’标准化设计和生产体系推动新型建筑工业化可持续发展”等信息5则

**建筑与结构设计**

- 03 砌体填充墙对RC框架结构影响的研究(金焕,于松)
- 06 某超高层框架-核心筒结构施工模拟分析(王秀泉)
- 09 基于辽南海岛居民行为需求的绿色宜居住宅设计  
(袁思佳,周敏,姜立婷)
- 12 对应急医疗设施设计标准的学习及思考(贺风云)
- 15 民用建筑结构设计要点探究(刘俊杰)
- 17 集装箱建筑的空间组合设计——以某游客体验中心为例  
(郭琥,赵东生)
- 20 基于广厦结构的BIM2.0结构设计(李亚飞,刘小惠)
- 22 绿色建筑基于整体观的平衡设计策略探索(刘霞)
- 25 谈简支梁桥的桥面连续构造  
(张秀林,卞怡,王志成,李佐宇)
- 27 无锡太湖新城东侧校区和畅小学建筑设计(方卫华)
- 30 地下室顶板计算假定的选择问题分析  
(汤静,袁沈峰,戴远,梁涛涛)
- 33 外框架斜柱对框架结构受力性能的影响  
(杨博颜,宋小软)
- 37 医院建筑设计分析(陈文鹏)
- 40 建筑剪力墙结构设计优化策略研究(李青春)

**基础工程设计**

- 42 预应力混凝土管桩在岩溶地区的应用(叶修喜,余安胜)

- 45 拉森钢板桩支护技术在市政工程基坑支护中的应用  
(高永)
- 48 输电线路铁塔基础选型设计及其优化思路(牛子儒)
- 50 岩土工程深基坑支护施工技术措施研究(郎雷亮)
- 52 地下空间工程岩土工程勘察的重点(郭霞,万进东)
- 55 地质工程测量中如何有效应用测绘新技术(齐晓迪)
- 58 关于水工环地质勘察工作的措施研究(张晓辉)
- 60 桩体特性对软土地区复合地基沉降特性影响及优化设计  
研究(倪先栋)
- 63 无人机航测系统在地质测绘领域的实践探索  
(雷海智,谢继香)

**公用工程设计**

- 65 基于某校区清洁能源供热节能循环利用改造的研究  
(杨猛,王英杰)
- 68 某综合医院能耗模拟及空调负荷分析(高瑞凯,张家瑶)
- 71 物流建筑防火设计相关问题研究(郭江仕)

**市政·交通·水利工程设计**

- 74 城市地铁隧道衬砌病害分析及加固方法研究  
(董光辉,吴锋)
- 76 分析污水处理厂自动化控制系统及控制功能实现  
(黄丛慧)
- 79 地铁盾构测量方法的应用研究刍议(陈冬)
- 81 污水管廊内管道支墩优化分析(柴寅博,王伟)
- 84 严寒地区路基CFG桩冻胀破坏机理研究(刘庆军)
- 87 贝佳亚连接线项目泥灰岩边坡破坏形式和处理措施研究  
(韩磊)
- 90 绿色小水电理念在河道生态治理项目设计中的应用  
(邹一雄)
- 93 既有跨河公路桥上新建高架桥的基础施工  
(祝新顺,卓鑫)
- 96 谈城市道路设计与公路设计的区别与联系(肖建坤)
- 99 城市黑臭水体处理技术方案分析(谢玉霞)
- 101 青衣江水源地“双箱涵、互备用、反冲洗”取水工程设计  
建设实例(陈明进)
- 104 市政桥梁工程的常见病害与处理(曾小刚)
- 107 高速公路改扩建前期研究要点探讨(李昆)
- 109 探讨城市设计对控制性详细规划的支撑与引导——以淳  
化新市镇控制性详细规划为例(胡幸,陈卓)
- 112 城市轨道交通车辆段综合开发规划设计初探  
(王亮,苏毅)
- 115 预应力锚索施工在高速公路高边坡治理工程中的应用经  
验分析(欧阳龙)

118 论铁路隧道渗水病害对衬砌结构的影响及治理方案  
(王军辉)

121 改扩建公路路基路面设计优化措施分析(田原)

123 基于弯矩曲率分析的桥墩加固设计(游科华)

127 金华BRT关键断面客流调度优化策略  
(胡新星, 胡俊逸)

131 桥梁抗震设计要点及减隔震技术的应用  
(王兆旦, 王华, 逢鹏程)

133 中小型水利工程施工中围堰技术的应用  
(卢志卿, 俞扬, 韦学军)

136 水利施工中的围堰类型与应用要点(王怀春)

138 结合实际工程分析海堤防护工程设计(常根朋)

141 出山店水库坝体填筑规划与实施(刘淑文)

143 连云港某岩质边坡稳定性分析与治理实践(陈城)

146 四网融合构建下的江苏轨道交通发展思路探索  
(胡俊豪, 张海军, 刘洋, 石利群)

## 工业工程设计

149 空调控制器智能化车间规划分析(孙玉萍, 范超众)

152 新建热水器生产车间项目总平面布局研究  
(王祥, 范超众, 孙玉萍)

155 平衡重叉车货叉架焊接生产线设计  
(马闯, 葛晖, 王仲恒, 滕纪云, 石静, 康凯)

157 新技术在叉车装配车间工艺设计中的应用  
(葛晖, 王仲恒, 马闯)

161 古巴某生物质电站燃料输送系统设计研究  
(张凯, 朱明, 王哲)

## 环境工程设计

163 分析城市规划中的环境保护关键点(吴澜)

## 智能与信息化

166 BIM技术的建模与施工过程分析  
(刘小惠, 李亚飞, 黄文君)

168 漫游动画及VR沉浸式三维交互技术在工业项目上的应用  
研究(肖晓, 常跃镡)

171 SOLIDWORKS Composer在设计院工艺仿真中的应用  
(陈静, 叶李, 曹斯明)

174 Midas/Gen与ABAQUS的复杂建筑结构模型转换程序开发  
(王杰)

178 BIM技术在建筑设计和项目施工及管理中的应用(桂锋)

181 BIM技术在岩土工程勘察中的应用(郑豪, 宁豪杰)

184 Flexsim在塔机结构件涂装线设计中的应用  
(朱明, 林天强, 杨飞周, 王哲)

187 “智慧工地”在公路工程中的应用研究(杨莉)

## 工程施工技术

189 富水破碎地层隧道斜井与主洞交叉处施工控制技术  
(潘彦邑, 喻亮, 刘晨, 周勇, 肖荣)

192 地铁车辆大架修基地扩容改造设计探讨(王薪)

197 市政道路软土路基强夯法施工技术应用研究  
(于沛杰, 姜珍珍, 修仕涛)

199 长寿命全透水道路绿色施工技术研究  
(苏立超, 王中合)

202 土木工程施工中的边坡支护技术分析(张学庆)

205 大跨径预应力在连续刚构桥施工中的技术讨论  
(孙坤江)

207 初弯曲对缀板柱承载力的影响分析(刘新尧)

210 预应力混凝土连续箱梁裂缝分析与防治(王成军)

212 市政桥梁工程中预应力张拉施工的关键技术研究  
(孙伟杰)

215 水泥搅拌桩技术在道路软土路基处理中的应用(陈晨)

217 高层住宅剪力墙模板施工方案的研究(杨越)

219 水利水电工程边坡开挖支护施工技术探究(张峰华)

222 山区陡坡地段桥梁桩基础施工的安全评价及其防护技术  
(解堂堂)

224 高填方边坡多级仰斜式挡墙施工关键技术分析  
(胡小英)

227 市政道路路桥过渡段的施工要点探讨(郭建斌)

229 预应力混凝土在路桥施工中的应用(卢广鑫)

## 工程项目管理

232 路桥工程现场施工管理的难点及应对措施  
(陈瑜未, 王东升)

234 建设工程管理风险防范与控制研究(董磐磐)

236 水电站地下工程施工监理难点及对策(周华川)

239 基坑监测工作中安全控制要点分析(闫晓璞)

241 公路工程项目管理标准化研究(任壬)

244 论道路交通安全设施对交通安全的影响(边磊)

246 项目管理模式在城市污水处理厂建设工程中的应用  
(管玉华, 张爱军, 刘星宇)

249 论昆明地铁运营监测的必要性(李霞, 张蕴民, 刘兵)

252 公路工程施工中的安全管理与风险控制研究(闫国)

254 公路工程机械施工范畴存在的问题及对策研究  
(胡齐齐, 于佳录)

**INFORMATION**

- 01 "Building a '1+3' Standardized Design and Production System to Promote the Sustainable Development of New Building Industrialization" Etc. 5

**Architectural and Structural Design**

- 03 Study on the Effects of Masonry-Infilled Walls on RC Frame Structure (JIN Huan, YU Song)
- 06 Construction Simulation Analysis of a Super High-Rise Frame-Core Tube Structure (WANG Xiu-quan)
- 09 Design of Green Livable Housing Based on the Behavior Needs of Residents in Southern Liaoning Island (YUAN Si-jia, ZHOU Min, JIANG Li-ting)
- 12 Study and Thinking on the Design Standard of Emergency Medical Facilities (HE Feng-yun)
- 15 Key Points of Civil Building Structure Design (LIU Jun-jie)
- 17 Space Combination Design of Container Building——Taking a Tourist Experience Center as an Example (GUO Xiao, ZHAO Dong-sheng)
- 20 Structural Design of BIM2.0 Based on Guangsha Structure (LI Ya-fei, LIU Xiao-hui)
- 22 Research on Balanced Design Strategy of Green Building Based on Holistic View (LIU Xia)
- 25 Discussion on Continuous Slab-Deck of Simply Supported Beam Bridge (ZHANG Xiu-lin, BIAN Yi, WANG Zhi-cheng, LI Zuo-yu)
- 27 Architectural Design of Hechang Primary School in East Campus of Taihu New Town, Wuxi (FANG Wei-hua)
- 30 Analysis on Selection of the Calculating Assumption of Basement Top Slab (TANG Jing, YUAN Shen-feng, DAI Yuan, LIANG Tao-tao)
- 33 The Influence of Inclined Column of Outer Frame on the Mechanical Performance of Frame Structure (YANG Bo-yan, SONG Xiao-ruan)
- 37 Analysis of Hospital Building Design (CHEN Wen-peng)
- 40 Research on Optimization Strategy of Building Shear Wall Structure Design (LI Qing-chun)

**Engineering Design of the Ground**

- 42 Application of Prestressed Concrete Pipe Pile in Karst Area (YE Xiu-xi, YU An-sheng)
- 45 Application of Larsen Steel Sheet Pile Support Technology in Foundation Pit Support of Municipal Engineering (GAO Yong)
- 48 Type Selection Design and Optimization of Transmission Line Tower Foundation (NIU Zi-ru)

- 50 Study on the Support Construction Technology of Deep Foundation Pit in Geotechnical Engineering (LANG Lei-liang)
- 52 The Key Points of Geotechnical Engineering Investigation in Underground Space Engineering (GUO Xia, WAN Jin-dong)
- 55 How to Effectively Apply the New Surveying and Mapping Technology in Geological Engineering Survey (QI Xiao-di)
- 58 Study on the Measures for the Geological Investigation of Hydraulic Environment (ZHANG Xiao-hui)
- 60 Influence of Pile Characteristics on Settlement Characteristics of Composite Foundation in Soft Soil Area and Its Optimal Design (NI Xian-dong)
- 63 Practice and Exploration of UAV Aerial Survey System in the Field of Geological Surveying and Mapping (LEI Hai-zh, XIE Ji-xiang)

**Public Utilities Design**

- 65 Research on Energy Saving and Recycling Utilization of Clean Energy Heating in a Campus (YANG Meng, WANG Ying-jie)
- 68 Energy Consumption Simulation and Air Conditioning Load Analysis of a General Hospital (GAO Rui-kai, ZHANG Jia-yao)
- 71 Research on Fire Protection Design of Logistics Building (GUO Jiang-shi)

**Municipal Traffic Water Resources Engineering Design**

- 74 Damage Analysis and Rehabilitation Method Study of Urban Metro Tunnel Lining (DONG Guang-hui, WU Feng)
- 76 Analysis of Automatic Control System and Realization of Control Function in Sewage Treatment Plant (HUANG Cong-hui)
- 79 Discussion on Application Research of Metro Shield Surveying Method (CHEN Dong)
- 81 Optimization Analysis of Pipe Piers in Sewage Pipe Gallery (CHAI Yin-bo, WANG Wei)
- 84 Study on Frost Heave Failure Mechanism of Subgrade CFG Pile in Severe Cold Area (LIU Qing-jun)
- 87 Study on the Damaged Form and Treatment Measures of Marl Slope in Bejaia Connecting Link Project (HAN Lei)
- 90 Application of the Concept of Green Small Hydropower in the Design of a River Ecological Treatment Project (ZOU Yi-xiong)
- 93 Foundation Construction of New Viaduct on Existing River Crossing Highway Bridge (ZHU Xin-shun, ZHUO Xin)
- 96 Discussion on the Difference and Connection Between Urban Road Design and Highway Design (XIAO Jian-kun)
- 99 Analysis on the Technical Plan of Urban Black-Smelly Water Treatment (XIE Yu-xia)
- 101 Design and Construction of "Double Box Culvert, Mutual Standby and Backwash" Water Intake Project in Qingyi River Water Source Area (CHEN Ming-jin)
- 104 Common Diseases and Treatment of Municipal Bridge Engineering (ZENG Xiao-gang)
- 107 Discussion on Key Points of Early Stage Research on Expressway Reconstruction and Expansion (LI Kun)
- 109 Discussion on the Support and Guidance of Urban Design to Regulatory Planning——A Case Study of Regulatory Planning of Chunhua New Town (HU Xing, CHEN Zhuo)
- 112 Preliminary Study on Comprehensive Development Planning and Design of Urban Rail Transit Depot (WANG Liang, SU Yi)
- 115 Application Experience Analysis of Prestressed Anchor Cable Construction in Expressway High Slope Treatment Project (OUYANG Long)
- 118 Discussion on the Influence of Water Seepage Disease on the Lining Structure of Railway Tunnel and Its Treatment Scheme (WANG Jun-hui)

- 121 Analysis on the Optimization Measures of Subgrade and Pavement Design for Reconstruction and Extension of Highway (TIAN Yuan)
- 123 Design of Bridge Pier Reinforcement Based on Moment Curvature Analysis (YOU Ke-hua)
- 127 Optimization Strategy of Dispatching for Key Passenger Flow Section in Jinhua BRT (HU Xin-xing, HU Jun-yi)
- 131 Key Points of Seismic Design of Bridge and Application of Seismic Reduction and Isolation Technology (WANG Zhao-dan, WANG Hua, PANG Peng-cheng)
- 133 Application of Cofferdam Technology in Construction of Small and Medium-Sized Water Conservancy Projects (LU Zhi-qing, YU Yang, WEI Xue-jun)
- 136 Types and Application Points of Cofferdam in Water Conservancy Construction (WANG Huai-chun)
- 138 Discussion on the Sea Dike Protection Engineering Design Combined with Practical Engineering (CHANG Gen-peng)
- 141 The Plan and Implementation of Dam Body Filling in Chushandian Reservoir (LIU Shu-wen)
- 143 Stability Analysis and Reinforcement Practice of a Rock Slope in Lianyungang (CHEN Cheng)
- 146 Exploration on the Development Idea of Jiangsu Rail Transit Under the Construction of Four Networks Fusion (HU Jun-hao, ZHANG Hai-jun, LIU Yang, SHI Li-qun)

### Industrial Engineering Design

- 149 Analysis of Intelligent Workshop Planning for Air-Conditioning Controller (SUN Yu-ping, FAN Chao-zhong)
- 152 Research on General Layout of New Building Water Heater Production Workshop Project (WANG Xiang, FAN Chao-zhong, SUN Yu-ping)
- 155 Design of Welding Production Line of Fork Carriage with Counterweight (MA Chuang, GE Hui, WANG Zhong-heng, TENG Ji-yun, SHI Jing, KANG Kai)
- 157 Application of New Technology in Process Design of Forklift Assembly Workshop (GE Hui, WANG Zhong-heng, MA Chuang)
- 161 Study on the Design of Fuel Delivery System for a Biomass Power Station in Cuba (ZHANG Kai, ZHU Ming, WANG Zhe)

### Environment Engineering Design

- 163 Analysis of Key Points of Environmental Protection in Urban Planning (WU Lan)

### Intelligentize and Informatization

- 166 Modeling and Construction Process Analysis of BIM Technology (LIU Xiao-hui, LI Ya-fei, HUANG Wen-jun)
- 168 Application Research of Roaming Animation and VR Immersive 3D Interactive Technology in Industrial Projects (XIAO Xiao, CHANG Yue-xin)
- 171 Application of SOLIDWORKS Composer in Process Simulation of Design Institute (CHEN Jing, YE Li, CAO Si-ming)
- 174 Development of Complex Structure Model Transformation Program Between Midas/Gen and ABAQUS (WANG Jie)
- 178 Application of BIM Technology in Architectural Design, Project Construction and Management (GUI Feng)
- 181 Application of BIM Technology in Geotechnical Engineering Investigation (ZHENG Hao, NING Hao-jie)
- 184 Application of Flexsim in the Design of Coating Line for Tower Crane Structural Parts (ZHU Ming, LIN Tian-qiang, YANG Fei-zhou, WANG Zhe)
- 187 Study on the Application of "Smart Site" in Highway Engineering (YANG Li)

### Construction Technology

- 189 Construction Control Technology at Intersection of Inclined Shaft and Main Tunnel in Water-Rich Broken Stratum Tunnel (PAN Yan-yi, YU Liang, LIU Chen, ZHOU Yong, XIAO Rong)
- 192 Discussion on the Design of Capacity Expansion in the Overhaul and Heavy Repair Base for Metro Vehicles (WANG Xin)
- 197 Study on Application of Dynamic Compaction Method in Soft Soil Subgrade Construction of Municipal Road (YU Pei-jie, JIANG Zhen-zhen, XIU Shi-tao)
- 199 Research on Green Construction Technology of Long-Life and Fully Permeable Road (SU Li-chao, WANG Zhong-he)
- 202 Analysis of Slope Support Technology in Civil Engineering Construction (ZHANG Xue-qing)
- 205 Technical Discussion on Long-Span Prestress in Construction of Continuous Rigid Frame Bridge (SUN Kun-jiang)
- 207 The Influence of Initial Bending on Carrying Capacity of Batten Plate Columns (LIU Xin-yao)
- 210 Crack Analysis and Prevention of Prestressed Concrete Continuous Box Girder (WANG Cheng-jun)
- 212 Research on the Key Technology of Prestressed Tension Construction in Municipal Bridge Engineering (SUN Wei-jie)
- 215 Application of Cement Mixing Pile Technology in Treatment of Road Soft Soil Subgrade (CHEN Chen)
- 217 Research on Construction Scheme of Shear Wall Formwork for High-Rise Residential Buildings (YANG Yue)
- 219 Research on Construction Technology of Slope Excavation and Support in Water Conservancy and Hydropower Projects (ZHANG Feng-hua)
- 222 Safety Evaluation and Protection Technology of Bridge Pile Foundation Construction in Steep Slope of Mountain Area (XIE Tang-tang)
- 224 Key Technology Analysis of Multistage Inclined Retaining Wall Construction for High Fill Slope (HU Xiao-ying)
- 227 Discussion on Construction Points of Road and Bridge Transition Section of Municipal Roads (GUO Jian-bin)
- 229 Application of Prestressed Concrete in Road and Bridge Construction (LU Guang-xin)

### Project Management

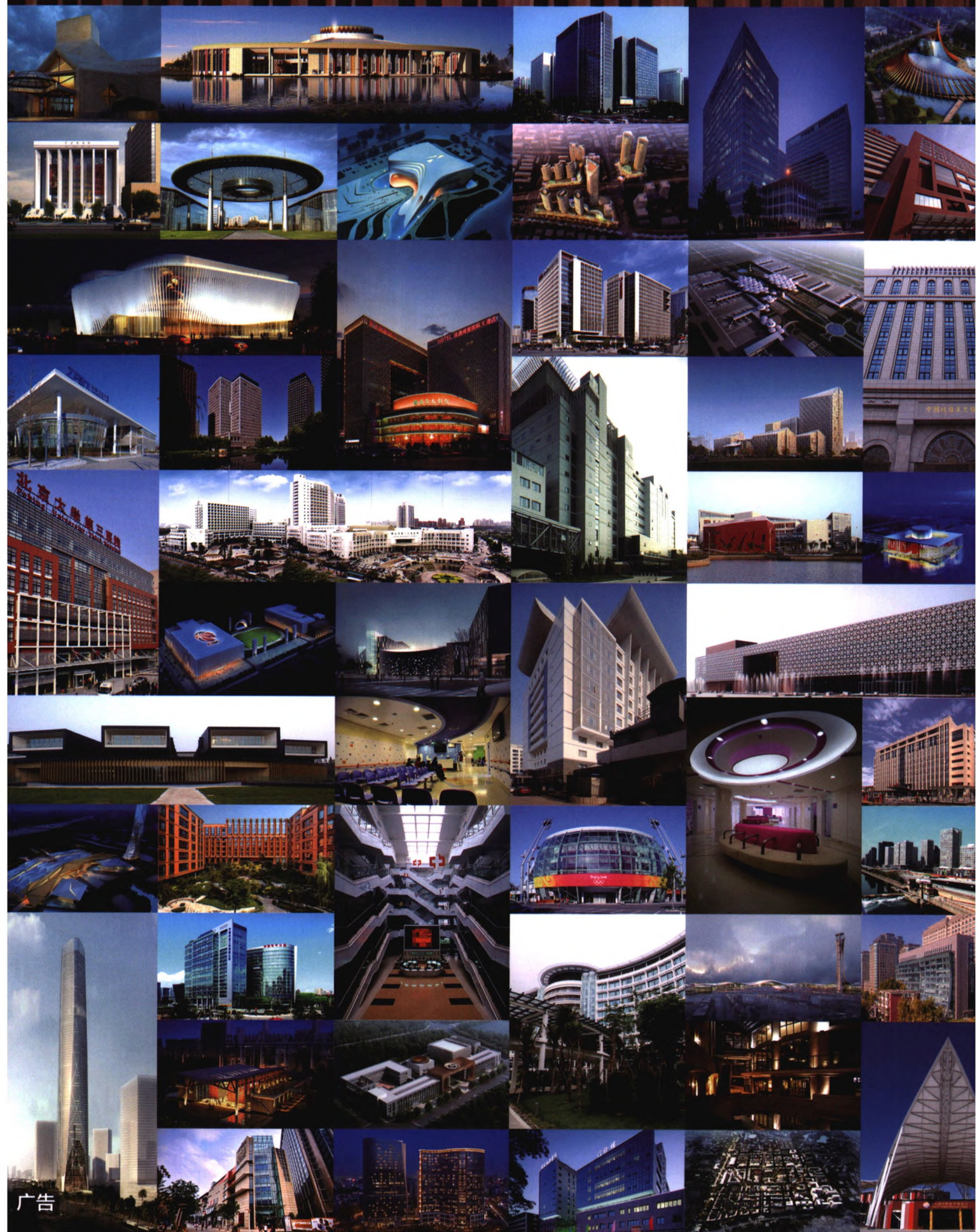
- 232 Difficulties and Countermeasures of Site Construction Management of Road and Bridge Engineering (CHEN Yu-wei, WANG Dong-sheng)
- 234 Research on Risk Prevention and Control in Construction Engineering Management (DONG Pan-pan)
- 236 Difficulties and Countermeasures of Construction Supervision of Underground Engineering of Hydropower Station (ZHOU Hua-chuan)
- 239 Analysis on Key Points of Safety Control in Foundation Pit Monitoring (YAN Xiao-pu)
- 241 Research on Standardization of Highway Project Management (REN Ren)
- 244 Discussion on the Impact of Road Traffic Safety Facilities on Traffic Safety (BIAN Lei)
- 246 Application of Project Management Mode in Construction Project of Urban Sewage Treatment Plant (GUAN Yu-hua, ZHANG Ai-jun, LIU Xing-yu)
- 249 Discussion on the Necessity of Operation Monitoring of Kunming Metro (LI Xia, ZHANG Yun-min, LIU Bing)
- 252 Research on Safety Management and Risk Control in Highway Engineering Construction (YAN Guo)
- 254 Problems Existing in Construction Category of Highway Construction Machinery and Its Countermeasures (HU Qi-qi, YU Jia-lu)





# 中国中元国际工程有限公司

CHINA IPPR INTERNATIONAL ENGINEERING CO., LTD.



广告

地址：北京市西三环北路5号 邮编：100089 电话：(010) 68458355 传真：(010) 68732688 网址：<http://www.ippr.com.cn> 邮箱：[office@ippr.net](mailto:office@ippr.net)