



工程建设与设计

主办: 国家机械工业局工程建设中心 中国机械工业勘察设计协会 中国中元国际工程有限公司 CN 11-3914/TU 2020 年第03月上 总第427期



北京·中关村医疗器械产业园
华通设计顾问工程有限公司



动态资讯**01 “住建部决定开展 2019 年度装配式建筑发展情况统计工作” 等信息 9 则****建筑与结构设计**

- 03** 严寒地区装配式建筑非砌筑外围护系统设计应用
(李博彦, 赵小波)
- 05** 混凝土结构的设计要点(马智英, 关洪成)
- 09** 钢筋混凝土框排架结构在实际工程中的应用(许岩)
- 12** 钢筋混凝土斜支撑-框架结构抗震设计分析
(魏毅, 郑恒祥)
- 15** 论旧城改造中的平屋面设计策略(郑彪)
- 18** 高层建筑混凝土结构优化设计分析研究(赵鑫)
- 20** 双主梁钢板组合梁桥总体设计与分析(张钰伯)
- 23** 谈施工图设计中建筑外围护结构的防水处理(王志刚)

基础工程设计

- 25** 灌注桩基础施工履带式钻吊一体机的研制
(高歌, 刘强, 舒邦京, 邵腾飞, 郭越红)
- 27** 刚性桩复合地基设计探讨(万继春)
- 30** GM(1, 1) 预计模型时序长度选择对大型建筑沉降预测精度的影响(王正虎, 谷村村)

公用工程设计

- 34** 基于 PKPM-BIM 技术的地下室管线综合设计应用研究
(郑晏芝, 张梅香, 刘博, 吴彦, 扶嘉)
- 37** 超长隧道换气工况取值合理性的研究
(赵彬彬, 张凯, 付玮, 高丽萍)
- 40** 水下隧道火灾定位及联动灭火技术探析(吴小丽)
- 44** 低压电气接地故障及其防护措施(王丹丹)

市政·交通·水利工程设计

- 47** 高速公路主线收费站通行能力设计研究
(隋承林, 李政, 马坤)
- 49** 市政道路设计发展现状及改进设计的措施(齐琪)
- 52** 自行式液压梁模在高速公路预制梁中的应用(桂贤林)
- 55** 城市轨道交通 50kg/m 钢轨 7 号单开道岔设计研究
(王书卫)
- 58** 黄土地区路基排水病害及防治措施(王雅婷)
- 61** 高速公路工程边坡的工程地质分类(余君)
- 63** 山区高速公路长大纵坡路段安全设计要点探究
(温影影, 汪才喜)
- 66** 新建矿山排泥库地下水多元示踪试验研究(石东伟)
- 69** 高速公路路线纵断面设计探讨(魏同军)
- 71** 高城镇化率下城镇污水处理厂出水水质标准的思考
(王绍征)
- 74** 空心板梁桥的底板纵向开裂成因研究和治理措施(孙江波)
- 77** 城市交通标志结构计算变形控制标准研究
(郑志超, 侯登高)
- 79** 展现荆风楚韵, 彰显名城特色——荆州城市设计试点工作的实践与思考(陈龙, 康自强)
- 82** 云茂高速公路高边坡失稳治理分析(曾健雄, 蔡敏)
- 85** 城市内涝的成因及对策(蒋国民, 于询鹏, 李克)
- 87** 混凝土桥梁病害原因及防腐加固措施研究(马士召)

智能与信息化

- 90** 分析工程测量结合 BIM 技术在工程项目上的应用
(魏小明, 郭为义)
- 92** 5G 移动通信在物联网中的应用
(桑遥, 刘瑞, 乔子琴, 范子涛)
- 95** 高速公路网络信息安全动态防御体系研究(孙乐堂)
- 97** 工程测量 GPS 动态监测应用与数据处理研究(马忠卫)
- 100** 高铁站信息机房电源设备运维监控系统的应用与研究
(李然)
- 102** BIM 技术在地铁车站运维系统中的运用与研究
(王亮, 向伟彬, 谭文举)
- 105** 三维数字城市技术在城市规划中的应用
(吴江明, 傅冬华)

工程施工技术

- 107** 桥梁涂装红外热成像技术检测用试板设计应用
(高昊, 张运入, 姚腾)
- 110** 论桥梁预制连续梁节段拼装技术(桂怀武, 鲁斌)
- 112** 机械工业厂房地坪探讨(孙宇芳, 张明锋)
- 115** 海洋性环境中超大直径超长钻孔桩成孔施工技术
(慈张高, 刘兵)

- 117 屋面幕墙钢结构的组合式玻璃幕墙板块吊装施工技术
(苏海波)
- 120 低含水率粉细砂地层隧道化学注浆超前支护技术研究
(周云定, 程坤)
- 122 不同顶升模式对钢筋混凝土叠合梁内力的影响研究
(侯志强, 周秋红)
- 124 装配式机电安装与土建工程施工的配合策略(叶强)
- 127 仿古建筑中混凝土柱与木梁连接施工技术(陈磊)
- 130 净距离下穿建(构)筑物施工技术研究(侯世锋)
- 132 浅埋淤泥抛石区地铁暗挖隧道施工技术(林登辉)
- 135 高原寒冷地区多隔板变截面高墩快速施工技术(孟凡伟)
- 137 软弱围岩非爆破开挖小净距隧道施工步距合理性分析
(闫虎, 侯月琴)
- 140 SMA-13 沥青面层施工技术及其质量控制(张伟)
- 143 连续刚构桥爬锥铰接式托架施工技术
(张小龙, 刘永亮, 于文洋)
- 146 装配式空心板梁铰缝空间受力行为及加固方案研究
(赵雯鑫)
- 149 西北地区硫酸盐环境中混凝土施工防腐措施(韩绍甫)
- 152 大型自航耙吸式挖泥船深水防波堤堤心砂抛填及理坡成型施工应用(郑洪武)
- 157 高海拔严寒隧道穿越冰水堆积层施工关键控制技术
(张小军)
- 160 高速公路机电工程供配电施工技术(吴晓波, 李家璋)
- 162 锚杆挡土墙加固河堤岸坡施工方法(刘志贤, 张亮)
- 165 钢结构厂房安装质量控制要点分析(揭英强)
- 168 岩溶地区高铁桥梁桩基施工技术(李崇)
- 171 公路水稳冷再生基层材料组成设计与耐久性研究(马勇)
- 173 公路软基处理及其路基填筑施工技术(詹学贵)
- 176 湿陷性黄土灌注桩后注浆施工技术(杨琳琳)
- 178 滑模技术在水利水电施工中的运用重点探讨(马清新)
- 180 钢纤维混凝土技术在道路桥梁施工中的应用新探
(韩景科)
- 183 桥梁结构常见的病害及加固方法研究(乔茵茵)
- 186 市政道路路基路面工程的施工及其质量控制
(夏白田)
- 188 建筑工程机械维护保养技术的分析运用(王宏春)
- 190 跨铁路既有有线转体桥施工技术研究(潘静)
- 193 房建建筑工程中的高支模施工技术
(王琳, 仲崇红, 安晓清)
- 196 水利工程中水闸钢管桩围堰的施工技术实践探究(卢华)
- 198 装配式盖梁施工技术在桥梁工程中的应用
(何远义, 彭浪)
- 201 JIT 采购在建筑工程中的应用分析(黄琪亮)
- 203 超高层建筑钢结构加工与安装技术的探讨(杜浩)
- 206 大悬臂预应力混凝土盖梁施工支架技术探讨(王欢)
- 208 超大断面三维空间异形曲面预应力混凝土现浇梁模板施工技术(郑军涛)
- 工程项目管理**
- 212 建筑施工安全管理现状分析与建议
(蒋大永, 任凯, 青兴成)
- 215 关于桥梁拆除施工安全控制要点的探究
(姜金节, 孙阿龙)
- 218 公路机电工程质量控制的关键问题(上官明灿)
- 220 公路工程施工的施工合同管理实践(张超)
- 223 厦门市筲箕湖综合整治工程方案介绍(蒋启华)
- 225 公路工程施工阶段造价管理控制措施(韩亮)
- 228 高速铁路大量应用连续梁桥的施工管理策略(李宁)
- 230 铁路铺架施工技术管理要点(王永坤)
- 232 10.9 级高强度脚螺栓质量控制研究(徐绍婷)
- 235 地铁站深基坑开挖安全技术及管理措施(张雨)
- 237 火电工程焊接质量控制探讨(崔磊)
- 240 地铁盾构施工设备管理及维保技术分析(祁伟栋)
- 242 装配式建筑施工技术在建筑工程施工管理中的应用
(周遂)
- 245 “互联网+”“智慧消防”促社会消防管理创新之探讨
(何建红)
- 247 提升 10kV 配网电力工程安全管理的措施(司徒立恒)
- 250 沥青路面施工技术及其质量控制(何红)
- 252 预制装配式建筑施工常见质量问题与防范措施
(梁健, 张波)
- 255 房屋建筑现场施工技术质量管理的分析思路(刘志刚)
- 257 火电厂土建砌体结构工程监理措施(赵侃)
- 260 基于 BIM 的建筑结构设计流程管理研究(陈波)
- 263 公路工程项目施工全过程的成本控制(刘睿超)
- 265 建设工程前期咨询工作重点探析(马秀琴)
- 267 公路桥梁施工管理常见问题及改进措施(赵山根)
- 269 建筑工程中大体积混凝土浇筑质量控制策略研究
(李雄伟)
- 272 在华境外建筑设计企业如何有效控制项目完成度
(郭宜辰)
- 274 基于全过程造价管理模式下的工程造价控制研究
(李增武)
- 277 项目管理在医院管理实践中的应用探讨(张爱华, 闫智)
- 280 谈污水排海管项目施工阶段管控要点(朱建勇)

INFORMATION

- 01 "Ministry of Housing and Urban-Rural Development of the People's Republic of China Decided to Carry out Statistical Work on the Development of Prefabricated Buildings in 2019" Etc.9

Architectural and Structural Design

- 03 Design and Application of Non Masonry Exterior Enclosure System of Prefabricated Buildings in Severe Cold Area (LI Bo-yan, ZHAO Xiao-bo)
- 05 Design Points of Concrete Structure (MA Zhi-ying, GUAN Hong-cheng)
- 09 Application of Reinforced Concrete Frame-Bent Structure in Practical Engineering (XU Yan)
- 12 Seismic Design Analysis of Reinforced Concrete Oblique Brace-Frame Structures (WEI Yi, ZHENG Heng-xiang)
- 15 Discussion on Flat Roof Design Strategy in Old City Reconstruction (ZHENG Biao)
- 18 Analysis and Research on Optimal Design of High-Rise Building Concrete Structure (ZHAO Xin)
- 20 Overall Design and Analysis of Double Main Beams and Steel Plate Composite Beams Bridge (ZHANG Yu-bo)
- 23 Discussion on Waterproof Treatment of Building Envelope in Construction Drawing Design (WANG Zhi-gang)

Engineering Design of the Ground

- 25 Development of Drilling and Lifting Integrated Machin of Track Chassis in Cast-in-Place Pile Foundation Construction (GAO Ge, LIU Qiang, SHU Bang-jing, SHAO Teng-fei, GUO Yue-hong)
- 27 Discussion on Design of Rigid Pile Composite Foundation(WAN Ji-chun)
- 30 Influence of Time Series Length Selection of GM(1,1) Prediction Model on Settlement Prediction Accuracy of Large Buildings(WANG Zheng-hu, GU Cun-cun)

Public Utilities Design

- 34 Research on the Design and Application on Basement Pipeline Synthesis by PKPM-BIM (ZHENG Yan-zhi, ZHANG Mei-xiang, LIU Bo, WU Yan, FU Jia)
- 37 Study on the Rationality of the Ventilation Condition Value in Super-Long Tunnel (ZHAO Bin-bin, ZHANG Kai, FU Wei, GAO Li-ping)
- 40 Analysis on Fire Location and Linkage Extinguishing Technology of Underwater Tunnel (WU Xiao-li)
- 44 Low Voltage Electrical Ground Fault and Its Protective Measures (WANG Dan-dan)

Municipal · Traffic · Water Resources Engineering Design

- 47 Design Study on Capacity of Main Highway Toll Stations (SU Cheng-lin, LI Zheng, MA Kun)
- 49 Development Status of Municipal Road Design and Measures for Improving Design (QI Qi)
- 52 Application of Self-Propelled Hydraulic Beam Formwork in Highway Precast Beam (GUI Xian-lin)
- 55 Design Research of No.7 Turnout with 50kg/m Rail in Urban Rail Transit (WANG Shu-wei)
- 58 Subgrade Drainage Disease and Prevention Measures in Loess Area (WANG Ya-ting)

- 61 Engineering Geology Classification of Highway Engineering Slope (SHE Jun)
- 63 Key Points of Safety Design of Large Longitudinal Slope Section of Mountain Expressway (WEN Ying-ying, WANG Cai-xi)
- 66 Study on the Multi-Element Tracer Test of Groundwater in the New Mine (SHI Dong-wei)
- 69 Discussion on the Design of Highway Profile (WEI Tong-jun)
- 71 Consideration on Effluent Quality Standard of Urban Sewage Treatment Plant Under High Urbanization Rate (WANG Shao-zheng)
- 74 Causes Research on Longitudinal Cracking of Hollow Slab Girder Bridge's Bottom Plate and Its Control Measures (SUN Jiang-bo)
- 77 Research on Calculation of Deformation Control Standard for Urban Traffic Sign Structure (ZHENG Zhi-chao, HOU Deng-gao)
- 79 Show Jingfeng Chuyun and Highlight the Characteristics of Famous Cities—Practice and Consideration on Urban Design Pilot Work in Jingzhou (CHEN Long, KANG Zi-qiang)
- 82 Analysis on the Treatment of High Slope Instability of Yunmao Expressway (ZENG Jian-xiong, CAI Min)
- 85 The Causes and Countermeasures of Urban Waterlogging (JIANG Guo-min, YU Xun-peng, LI Ke)
- 87 Study on Diseases Causes of Concrete Bridges and Anti-Corrosion and Reinforcement Measures (MA Shi-zhao)

Intelligentize and Informatization

- 90 Analysis of the Application of Engineering Measurement Combined with BIM Technology in Engineering Projects (WEI Xiao-ming, GUO Wei-yi)
- 92 Application of 5G Mobile Communication in the Internet of Things (SANG Yao, LIU Rui, QIAO Zi-qin, FAN Zi-tao)
- 95 Research on Dynamic Defense System of Expressway Network Information Security (SUN Le-tang)
- 97 Research on Application and Data Processing of GPS Dynamic Monitoring in Engineering Survey (MA Zhong-wei)
- 100 Research and Application of Power Supply Equipment Operation and Maintenance Monitoring System in High-Speed Railway Station Information Room (LI Ran)
- 102 Application and Research of BIM Technology in Metro Station Operation and Maintenance System (WANG Liang, XIANG Wei-bin, TAN Wen-ju)
- 105 Application of Three-Dimensional Digital City Technology in Urban Planning (WU Jiang-ming, FU Dong-hua)

Construction Technology

- 107 Design and Application of Infrared Thermal Imaging Technology Test Plate for Bridge Coating (GAO Hao, ZHANG Yun-ru, YAO Teng)
- 110 Discussion on the Assembly Technology of Precast Continuous Beam Segments of Bridges (GUI Huai-wu, LU Bin)
- 112 Discussion on Floor of Machinery Workshop (SUN Yu-fang, ZHANG Ming-feng)
- 115 Construction Technology of Super-Large Diameter and Super-Long Bored Piles in Marine Environment (CI Zhang-gao, LIU Bing)
- 117 Construction Technology of the Composite Glass Curtain Wall Plate Hoisting of the Roof Curtain Wall Steel Structure (SU Hai-bo)
- 120 Research on Chemical Grouting Advance Support Technology of Silty Sand Tunnel with Low Moisture Content (ZHOU Yun-ding, CHENG Kun)
- 122 Study on the Effect of Different Overhead Patterns on the Inner Force of Reinforced Concrete Laminated Beams (HOU Zhi-qiang, ZHOU Qiu-hong)
- 124 The Coordination Strategy of Prefabricated Mechanical and Electrical Installation and Civil Engineering Construction (YE Qiang)

- 127 Construction Technology of Connecting Concrete Column and Wood Beam in Antique Building (CHEN Lei)
- 130 Study on Construction Technology of Net Distance Underpass Structure (HOU Shi-feng)
- 132 Construction Technology of Underground Tunnel in Shallow Silt Riprap Area (LIN Deng-hui)
- 135 Rapid Construction Technology of High Pier with Multi-Partition and Variable Section in Plateau Cold Area (MENG Fan-wei)
- 137 Reasonable Analysis of Construction Steps of Small Clear Distance Tunnel in Soft Surrounding Rock Excavation Without Blasting (YAN Hu, HOU Yue-qin)
- 140 Construction Technology and Quality Control of SMA-13 Asphalt Surface Course (ZHANG Wei)
- 143 Construction Technology of Climbing Cone Articulated Bracket for Continuous Rigid Frame Bridge (ZHANG Xiao-long, LIU Yong-liang, YU Wen-yang)
- 146 Study on the Spatial Stress Behavior and Reinforcement Scheme of Hinged Joint of Sembled Hollow Slab Beam (ZHAO Wen-xin)
- 149 Anti-Corrosion Measures for Concrete Construction in Sulfate Environment in Northwest China (HAN Shao-fu)
- 152 Application of Sand Filling and Slope Shaping in Deep Water Breakwater of Large Self-Propelled Trailing Suction Dredger (ZHENG Hong-wu)
- 157 Key Control Technology for Construction of High Altitude Cold Tunnel Through Ice Water Accumulation (ZHANG Xiao-jun)
- 160 Construction Technology of Power Supply and Distribution in Highway Mechanical and Electrical Engineering (WU Xiao-bo, LI Jia-zhang)
- 162 Construction Method for Reinforcement of Bank Slope by Anchor Retaining Wall (LIU Zhi-xian, ZHANG Liang)
- 165 Analysis on the Key Points of Installation Quality Control of Steel Structure Workshop (JIE Ying-qiang)
- 168 Pile Foundation Construction Technology for High-Speed Railway Bridge in Karst Area (LI Chong)
- 171 Research on Material Composition Design and Durability of Highway Water Stable and Cold Recycling Base Course (MA Yong)
- 173 Highway Soft Foundation Treatment and Roadbed Filling Construction Technology (ZHAN Xue-gui)
- 176 Post Grouting Construction Technology of Collapsible Loess Cast-in-Place Pile (YANG Lin-lin)
- 178 Discussion on the Application Points of Slip-Form Technology in Water Conservancy and Hydropower Construction (MA Qing-xin)
- 180 New Exploration for the Application of Steel Fiber Reinforced Concrete Technology in Road and Bridge Construction (HAN Jing-ke)
- 183 Common Diseases of Bridge Structures and the Reinforcement Methods (QIAO Han-han)
- 186 Construction and Quality Control of Municipal Road Subgrade and Pavement Engineering (XIA Bai-tian)
- 188 Analysis and Application of Maintenance Technology of Construction Machinery (WANG Hong-chun)
- 190 Research on the Construction Technology of Swivel Bridge Crossing Existing Railway Lines (PAN Jing)
- 193 Construction Technology of High Formwork in Building Construction (WANG Lin, ZHONG Chong-hong, AN Xiao-qing)
- 196 Research on Construction Technology of Steel Pipe Pile Cofferdam of Sluice in Water Conservancy Project (LU Hua)
- 198 The Application of the Construction Technology of the Prefabricated Cover Beam in the Bridge Engineering (HE Yuan-yi, PENG Lang)
- 201 Application Analysis of JIT Purchasing in Construction Engineering (HUANG Qi-liang)
- 203 Discussion on Steel Structure Processing and Installation Technology of Super High-Rise Buildings (DU Hao)

- 206 Discussion on the Construction Support Technology of Large Cantilever Prestressed Concrete Cap Beam (WANG Huan)
- 208 Construction Technology of Prestressed Concrete Cast-in-Place Beams Template with Super Large Section 3D Special-Shaped Curved Surface (ZHENG Jun-tao)

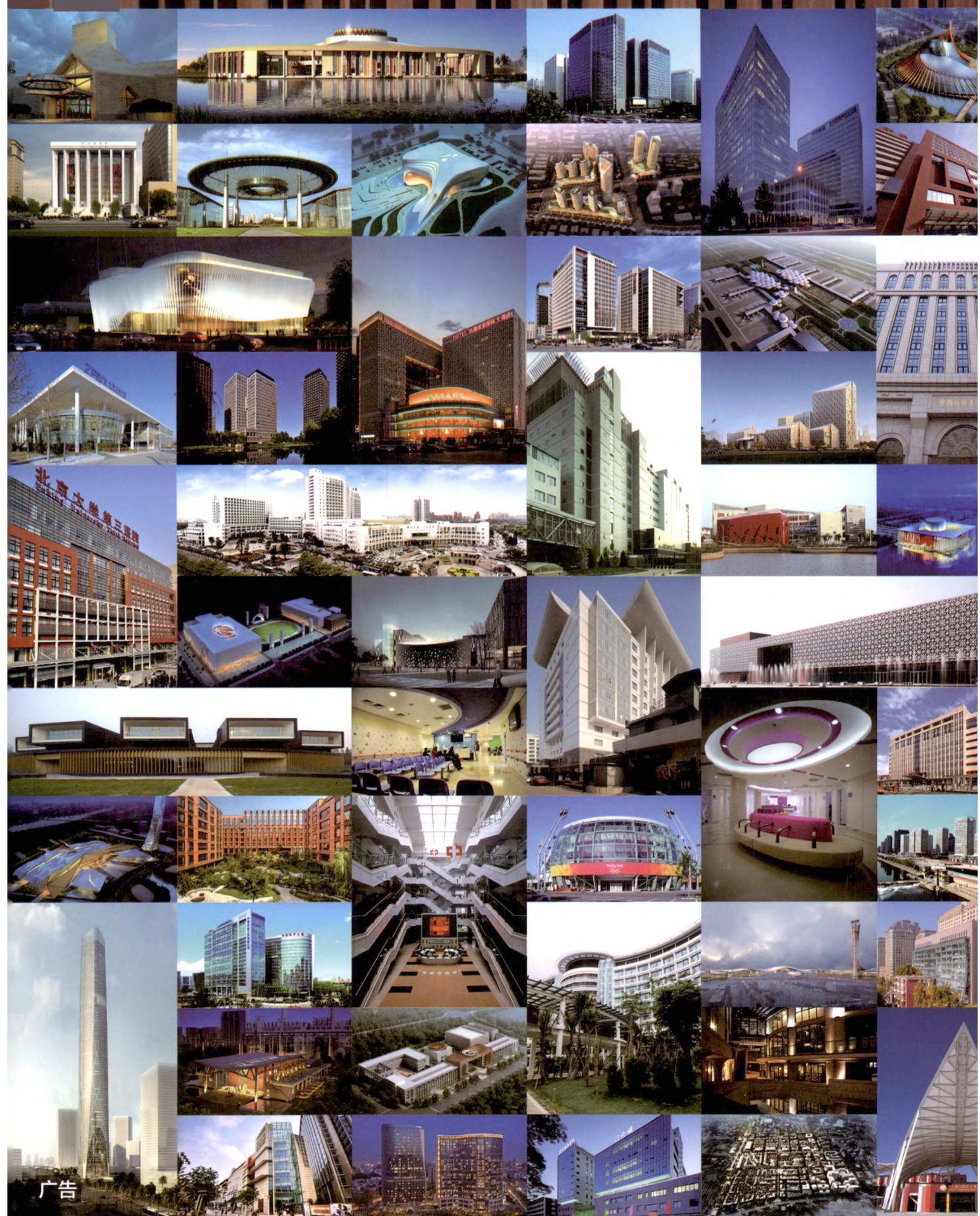
Project Management

- 212 Analysis of Construction Safety Management and the Suggestions (JIANG Da-yong, REN Kai, QING Xing-cheng)
- 215 Research on the Key Points of Safety Control of Bridge Demolition Construction (JIANG Jin-jie, SUN A-long)
- 218 Key Problems of Quality Control in Highway Mechanical and Electrical Engineering (SHANGGUAN Ming-can)
- 220 Practice of Construction Contract Management in Highway Engineering Construction (ZHANG Chao)
- 223 The Scheme Introduction of Xiamen Yundang Lake Comprehensive Regulation Engineering (JIANG Qi-hua)
- 225 Measures of Cost Management and Control in Highway Construction Stage (HAN Liang)
- 228 The Construction Management Strategy for Continuous Beam Bridge Widely Used in High-Speed Railway (LI Ning)
- 230 Key Points of Technical Management of Railway Laying and Erecting Construction (WANG Yong-kun)
- 232 Quality Control of 10.9 Grade High Strength Anchor Bolts (XU Shao-ting)
- 235 Safety Technology and Management Measures for Deep Foundation Pit Excavation in Subway Station (ZHANG Yu)
- 237 Discussion on the Welding Quality Control of Power Project (CUI Lei)
- 240 Analysis on the Management and Maintenance of Subway Shield Construction Equipment (QI Wei-dong)
- 242 Application of Prefabricated Construction Technology in Construction Management (ZHOU Sui)
- 245 Discussion on the Social Fire Management Innovation with "Internet +" and "Intelligent Fire Prevention" (HE Jian-hong)
- 247 Measures for Improving Safety Management of Electric Power Engineering in 10kV Distribution Network (SITU Li-heng)
- 250 Asphalt Pavement Construction Technology and Quality Control (HE Hong)
- 252 The Common Quality Problems and Preventive Measures in Prefabricated Building Construction (LIANG Jian, ZHANG Bo)
- 255 The Core Idea of Analyzing the Quality Management of Building Construction Technology (LIU Zhi-gang)
- 257 Supervision Measures for Civil Masonry Structure Engineering of Thermal Power Plant (ZHAO Kan)
- 260 Research on the Process Management of Architectural Structure Design Based on BIM (CHEN Bo)
- 263 Cost Control of the Whole Construction Process of Highway Project (LIU Rui-chao)
- 265 Discussion on the Key Points of Early Stage Consultation of Construction Project (MA Xiu-qin)
- 267 Common Problems of Highway and Bridge Construction Management and Improvement Measures (ZHAO Shan-gen)
- 269 Study on Quality Control Strategy of Mass Concrete Casting in Construction Engineering (LI Xiong-wei)
- 272 How Can Foreign Architectural Design Firms in China Effectively Control Project Overall Integrity (GUO Yi-chen)
- 274 Research on Project Cost Control Based on the Whole Process Cost Management Mode (LI Zeng-wu)
- 277 Application Analysis of Project Management in Hospital Management Practice (ZHANG Ai-hua, YAN Zhi)
- 280 Talking About the Key Points of Management and Control in the Construction Stage of Sewage Disposal Pipeline Project (ZHU Jian-yong)



中国中元国际工程有限公司

CHINA IPPR INTERNATIONAL ENGINEERING CO., LTD.



地址：北京市西三环北路5号 邮编：100089 电话：(010) 68458355 传真：(010) 68732688 网址：<http://www.ippr.com.cn> 邮箱：office@ippr.com

广告