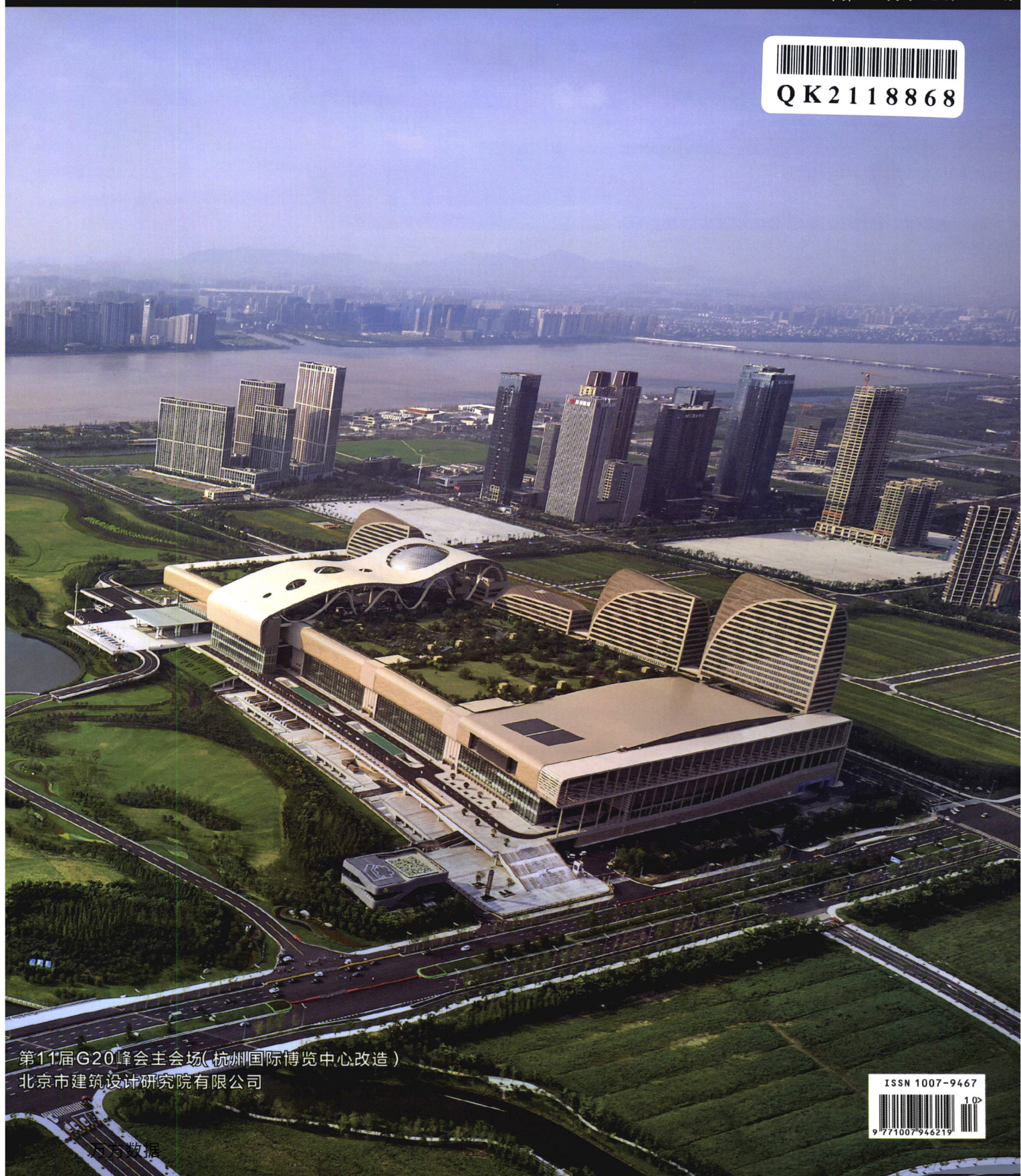




# 工程建设与设计

国家机械工业局工程建设中心 中国机械工业勘察设计协会 中国中元国际工程有限公司 CN 11-3914/TU 2021 年第05月下 总第456期



第11届G20峰会主会场(杭州国际博览中心改造)  
北京市建筑设计研究院有限公司



万方数据

**建筑与结构设计**

- 01 公共建筑空间人性化设计分析 (叶红)
- 05 外墙保温材料植入金属件后对传热性能的影响研究 (蔡新利, 武军, 杨安琪, 王吉萍, 侯超, 魏早宁)
- 08 再生混凝土密肋复合墙体受力性能试验探析 (蓝丽江)
- 11 存量产业园区的更新与发展 (王智忠)
- 14 传统元素在现代建筑设计中的传承 (孟磊)
- 17 城市可持续发展及其对国土空间规划的启示 (陆维达)
- 20 城市小区园林景观设计与植物配置探析 (汪应桃)
- 23 现代建筑设计与古建筑设计的融合思考 (王伟)
- 26 住宅建筑被动式节能设计研究 (冯俊)
- 28 景观节点主导下的城市带状公园设计探索 (曾思梅)
- 31 住宅与其他使用功能合建建筑的消防设计 (艾怡霏)
- 33 建筑结构中剪力墙结构的设计理念 (吴树明)

**基础工程设计**

- 36 绍兴智慧快速路岩土工程勘察分析 (徐霞)
- 39 真空预压在港口吹填土地基加固中的应用分析 (张瑞元)
- 42 工程建设中深基坑的支护与岩土勘察技术探讨 (陈俊任)

**公用工程设计**

- 44 大型排灌站高压电机就地无功补偿技术探讨 (刘凯)
- 47 板式换热器在暖通空调设计中的应用研究 (熊耀宇, 李思芸)
- 50 某锂离子电池负极材料厂供配电设计 (胡月)
- 54 工业企业供电切换技术的分析探索构架 (黄俊亮)

**市政·交通·水利工程设计**

- 57 多维视角下的地铁枢纽站周边综合开发 (赵琳)
- 60 巢湖至马鞍山铁路跨越长江桥隧方案比选研究 (李帅)
- 63 高速公路改扩建工程交通组织方案 (王辉)
- 66 软弱围岩隧道大变形的产生原因及控制 (李达昌, 宋俊洁)
- 69 防-截-排系统对平原水库坝后地下水位的影响研究 (陈留新)
- 71 水域综合物探技术在大桥建设预可行性研究中的应用 (徐辉, 陶建飞)
- 74 某小半径钢筋混凝土弯梁桥关键技术 (漆小军, 刘泉)
- 77 关于桥梁钢结构的设计探讨 (吴宽)

**工业工程设计**

- 80 预制立柱自动化喷淋技术及养护装置的研发 (宁英杰, 杨延龙, 方哲形, 谢纯辉)

**环境工程设计**

- 83 露天采矿矿山地质环境治理与恢复的意义、原则及核心思路分析 (于增宝)
- 85 水处理混凝剂的分类及未来发展探究 (刘中厚)

**智能与信息化**

- 87 基于“互联网+”的高速公路收费系统研究 (李伟)
- 90 高速公路道路监控系统设计分析 (孟浩)
- 92 GIS技术在环境影响评价中的实践探析 (袁振)
- 94 BIM技术在轨道交通工程中的应用探讨 (郭云飞)

**工程施工技术**

- 98 高桩码头PHC桩水上沉桩施工的质量控制 (薛媛)
- 101 钻孔灌注桩施工技术 in 房屋建筑工程中的应用 (罗翱)
- 103 预应力钢筒混凝土管结构修复更新技术分析 (马平)

- 105 土工格室在泥岩地质条件下的试验研究  
(张斌, 刘传, 赵凯, 李膺宇)
- 108 建筑工程中灌注桩后注浆施工技术的应用  
(李小雄)
- 111 水利工程施工导流及围堰技术的应用研究(钟绵志)
- 114 盾构隧道交叉换边施工关键技术研究(杜鹃)
- 118 城际铁路高架车站雨棚钢结构施工技术与质量控制研究(王伟)
- 121 抗滑桩支挡膨胀土边坡处治与施工工艺分析  
(陈跃文, 谭智勇, 张荣)
- 124 电力大件设备内河码头卸船工艺(刘茂稳)
- 127 橡胶沥青在城市道路水泥路面改造施工中的应用  
(杨锋均)
- 130 钢混组合桥梁施工、检测与养护技术(苏立超)
- 133 市政桥梁建设中的预应力施工技术分析  
(周海清)
- 136 绿色节能施工技术在房屋建筑工程中的应用  
(商焯青)
- 138 岩溶地区钻孔桩基础施工疑难处理措施(李斌)
- 141 探究深层水泥搅拌桩在道路工程软土地基处理中的应用(李兰平)
- 工程项目管理**
- 144 PPP模式建设项目执行阶段重难点分析及解决办法  
(林宏标)
- 147 高速公路工程造价预算定额的分析及优化  
(麦金成)
- 149 优化风电场运维管理、提高经济效益的方法研究  
(李炳花)
- 153 全断面富水砂层盾构施工风险控制措施研究  
(张涛)
- 156 基于EPC模式的石化工程项目管理措施(雪映林)
- 159 铁路工程概预算的要点及注意事项分析  
(王海听)
- 161 复杂条件下市政道路建设造价控制探讨  
(左红艳, 李皓)
- 163 公路工程全过程造价管理模式分析新探  
(左雅萍)
- 166 刍议城建档案信息资源的开发利用(刘敏)
- 169 新冠肺炎疫情对国际工程承包业务的影响及应对建议(刘亚东)
- 172 建筑工程管理中创新模式的应用及发展  
(张广亮)
- 175 针对医院建筑施工管理创新及绿色施工管理的分析(万平)
- 178 建筑工程施工监理现状及完善对策分析(浦鑫)
- 181 污水处理厂建设施工管理研究(巩浩)
- 185 高速公路机电工程供配电系统施工质量控制  
(胡贵发)
- 187 建筑工程施工监理安全风险及其防范措施研究  
(朱本怀)
- 190 动态管理在航道整治工程中的应用分析(李明)

## Architectural and Structural Design

- 01 Analysis of Humanized Design of Public Building Space(YE Hong)
- 05 Study on Heat Transfer Performance of External Wall Thermal Insulation Material Implanted with Metal Parts(CAI Xin-li, WU Jun, YANG An-qi, WANG Ji-ping, HOU Chao, WEI Zao-ning)
- 08 Experimental Study on Mechanical Properties of Recycled Concrete Multi-Ribbed Composite Wall(LAN Li-jiang)
- 11 Renewal and Development of Stock Industrial Park(WANG Zhi-zhong)
- 14 Inheritance of Traditional Elements in Modern Architectural Design(MENG Lei)
- 17 Urban Sustainable Development and Its Enlightenment to Territorial Spatial Planning(LU Wei-da)
- 20 Analysis on the Garden Landscape Design and Plant Configuration of Urban Residential District(WANG Ying-tao)
- 23 Reflection on the Integration of Modern Architectural Design and Ancient Architectural Design(WANG Wei)
- 26 Research on Passive Energy-Saving Design of Residential Buildings(FENG Jun)
- 28 Exploration on Urban Belt Park Design Led by Landscape Node(ZENG Si-mei)
- 31 Fire Fighting Design of Residential Buildings with Other Function(AI Yi-fei)
- 33 The Design Concept of Shear Wall Structure in Architectural Structure Design(WU Shu-ming)

## Engineering Design of the Ground

- 36 Geotechnical Engineering Investigation and Analysis of Shaoxing Smart Expressway(XU Xia)
- 39 The Application and Analysis of Vacuum Preloading in the Reinforcement of Port Dredger Fill Foundation(ZHANG Rui-yuan)
- 42 Discussion on Supporting and Geotechnical Investigation of Deep Foundation Pit in Engineering Construction(CHEN Jun-ren)

## Public Utilities Design

- 44 Discussion on Reactive Power Compensation Technology of High Voltage Motor in Large-Scale Drainage and Irrigation Station(LIU Kai)
- 47 Application Research on Plate Heat Exchanger in HVAC Design(XIONG Yao-yu, LI Si-yun)
- 50 Power Supply and Distribution Design for a Lithium-Ion Battery Anode Material Factory(HU Yue)
- 54 Analysis and Exploration Framework of Power Supply Switching Technology in Industrial Enterprises(HUANG Jun-liang)

## Municipal Traffic-Water Resources Engineering Design

- 57 Comprehensive Development Around Metro Hub Station from Multi-Dimensional Perspective(ZHAO Lin)
- 60 Comparison and Selection of Bridge and Tunnel Schemes of Chaohu-Ma'anshan Railway Across the Yangtze River(LI Shuai)
- 63 Traffic Organization Plan for Expressway Reconstruction and Expansion Project(WANG Hui)
- 66 Causes and Control Measures of Large Deformation in Weak Surrounding Rock Tunnel(LI Da-chang, SONG Jun-jie)
- 69 Research on the Influence of the Prevention-Interception-Drainage System on the Groundwater Level Behind the Dam of the Plain Reservoir(CHEN Liu-xin)
- 71 The Application of Comprehensive Geophysical Exploration Technology for Waters in Prefeasibility Study of Bridge Construction(XU Hui, TAO Jian-fei)
- 74 Some Key Technologies of Small Radius Reinforced Concrete Curved Beam Bridge(QI Xiao-jun, LIU Quan)
- 77 Discussion on the Design of Bridge Steel Structure(WU Kuan)

## Industrial Engineering Design

- 80 Research and Development of Automatic Spray Technology and Maintenance Device for Prefabricated Column(NING Ying-jie, YANG Yan-long, FANG Zhe-xing, XIE Chun-hui)

## Environment Engineering Design

- 83 Significance, Principle and Core Idea Analysis of Geological Environment Treatment and Restoration in Open Pit Mining(YU Zeng-bao)
- 85 Classification and Future Development of Coagulants for Water Treatment(LIU Zhong-hou)

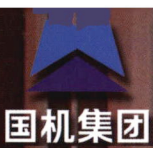
## Intelligentize and Informatization

- 87 Research on Expressway Toll System Based on "Internet +"(LI Wei)
- 90 Design and Analysis of Road Monitoring System of Expressway(MENG Hao)
- 92 The Practice of GIS Technology in Environmental Impact Assessment(YUAN Zhen)
- 94 Application of BIM Technology in Rail Transit Engineering(GUO Yun-fei)

## Construction Technology

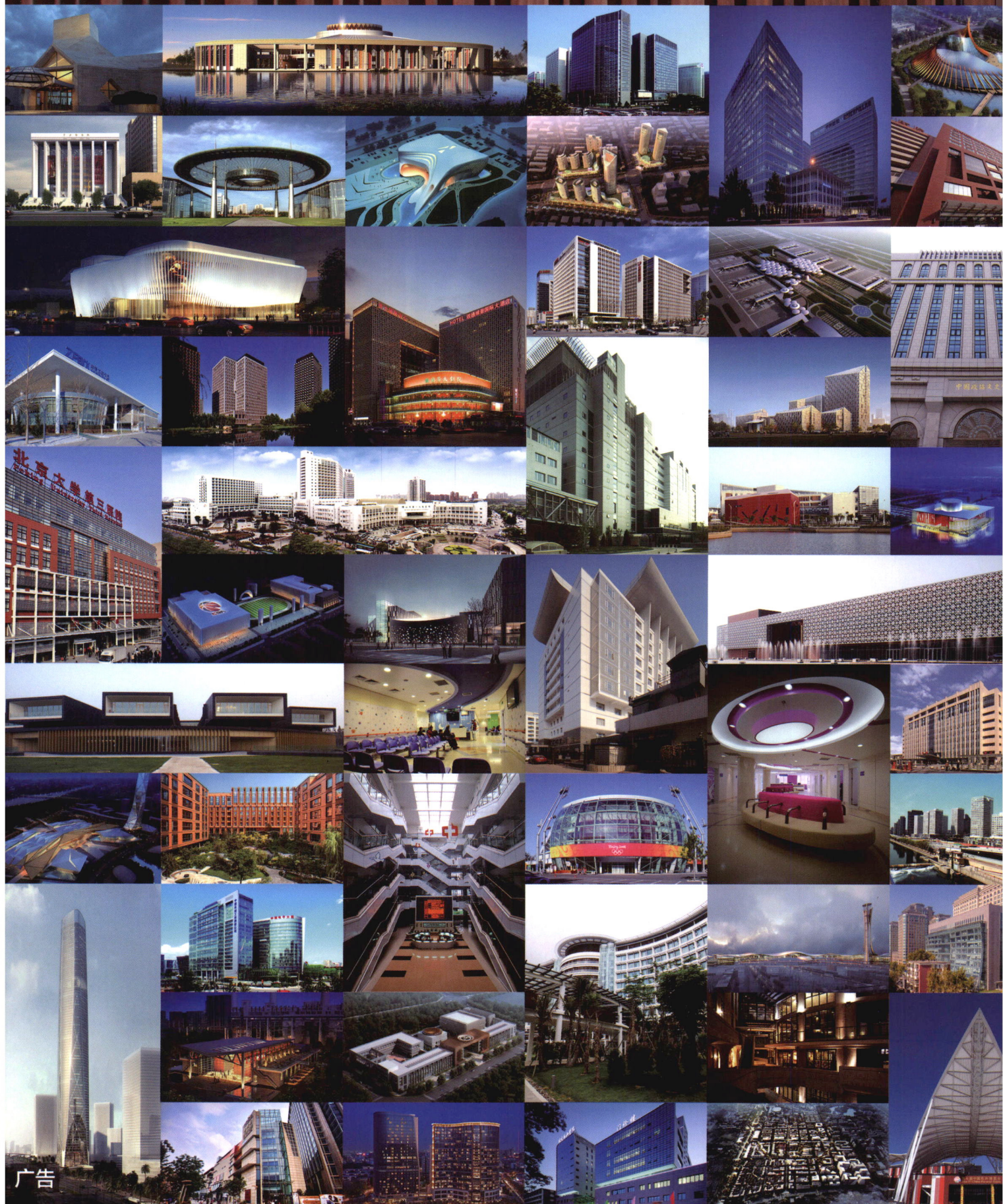
- 98 Quality Control of PHC Pile Sinking on Water in High-Piled Wharf(XUE Yuan)
- 101 The Application of Bored Pile Construction Technology in Housing Construction Engineering(LUO Ao)
- 103 Analysis of Repairing Technology of Prestressed Steel Tube Concrete Pipe Structure(MA Ping)

- 105 Experimental Study on Geocell Under Mudstone Geological Conditions(ZHANG Bin, LIU Chuan, ZHAO Kai, LI Ying-yu)
- 108 The Application of Post Grouting Construction Technology of Cast-in-Place Pile in Construction Engineering(LI Xiao-xiong)
- 111 Study on the Application of Construction Diversion and Cofferdam Technology in Water Conservancy Engineering(ZHONG Mian-zhi)
- 114 Research on Key Technology of Cross Side-Changing Construction of Shield Tunnel(DU Peng)
- 118 Research on Construction Technology and Quality Control of Canopy Steel Structure of Intercity Railway Elevated Station(WANG Wei)
- 121 Analysis of Treatment and Construction Technology of Expansive Soil Slope Supported by Anti-Slide Pile(CHEN Yue-wen, TAN Zhi-yong, ZHANG Rong)
- 124 Ship Unloading Technology of Large Power Equipment at Inland Wharf(LIU Mao-wen)
- 127 The Application of Rubber Asphalt in Cement Pavement Reconstruction Construction of Urban Road(YANG Feng-jun)
- 130 Construction, Inspection and Maintenance Technology of Steel-Concrete Composite Bridge(SU Li-chao)
- 133 Analysis of Pre-Stressed Construction Technique in Municipal Bridge Construction(ZHOU Hai-qing)
- 136 The Application of Green Energy-Saving Construction Technology in Housing Construction Engineering(SHANG Ye-qing)
- 138 Treatment Measures for Construction Difficulties of Bored Pile Foundation in Karst Area(LI Bin)
- 141 Exploration on the Application of Deep Cement Mixing Pile in the Treatment of Soft Soil Foundation of Road Engineering(LI Lan-ping)
- Project Management**
- 144 Analysis and Solution of the Key and Difficult Points in the Implementation Stage of Construction Project with PPP Mode(LIN Hong-biao)
- 147 Analysis and Optimization of Cost Budget Quota of Expressway Project(MAI Jin-cheng)
- 149 Study on the Methods of Optimizing the Operation and Maintenance Management and Improving the Economic Benefit of Wind Power Plant(LI Bing-hua)
- 153 Research on Risk Control Measures of Shield Tunneling Construction in Full Cross-Section of Water-Rich Sand Stratum(ZHANG Tao)
- 156 Management Measures of Petrochemical Engineering Project Based on EPC Mode(XUE Ying-lin)
- 159 Analysis of Key Points and Matters Needing Attention in Railway Project Budget(WANG Hai-ting)
- 161 Discussion on Cost Control of Municipal Road Construction Under Complex Conditions(ZUO Hong-yan, LI Hao)
- 163 Analysis of the Whole Process Cost Management Mode of Highway Engineering(ZUO Ya-ping)
- 166 Discussion on the Development and Utilization of Information Resources of Urban Construction Archives(LIU Min)
- 169 The Impact of COVID-19 on International Engineering Contracting and the Countermeasures(LIU Ya-dong)
- 172 Application and Development of Innovative Mode in Construction Engineering Management(ZHANG Guang-liang)
- 175 Analysis of Hospital Construction Management Innovation and Green Construction Management(WAN Ping)
- 178 Analysis of the Present Situation and Improvement Countermeasures of Construction Supervision of Building Engineering(PU Xin)
- 181 Research on Construction Management of Sewage Treatment Plant(GONG Hao)
- 185 Construction Quality Control of Power Supply and Distribution System in Electromechanical Engineering of Expressway(HU Gui-fa)
- 187 Study on Safety Risks and Preventive Measures of Construction Supervision of Building Engineering(ZHU Ben-huai)
- 190 Application Analysis of Dynamic Management in Waterway Regulation Project(LI Ming)



# 中国中元国际工程有限公司

CHINA IPPR INTERNATIONAL ENGINEERING CO., LTD.



广告

地址：北京市西三环北路5号 邮编：100089 电话：(010) 68458355 传真：(010) 68732688 网址：<http://www.ippr.com.cn> 邮箱：[office@ippr.net](mailto:office@ippr.net)