

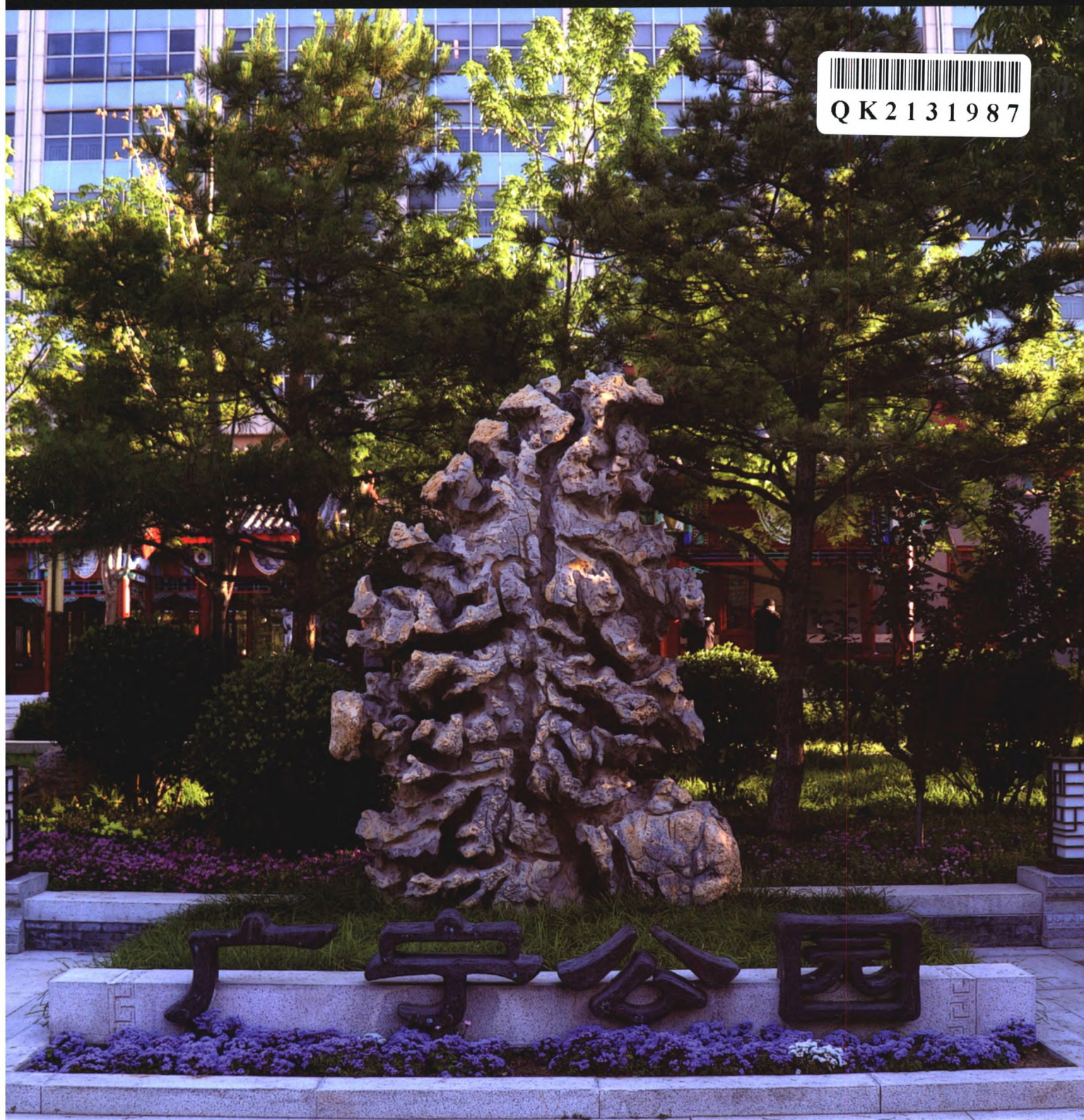


工程建设与设计

国家机械工业局工程建设中心 中国机械工业勘察设计协会 中国中元国际工程有限公司 CN 11-3914/TU 2021 年第08月下 总第462期



QK2131987



广宁公园报国寺绿地改造工程
北京创新景观园林设计有限责任公司

万方数据

ISSN 1007-9467



9 771007 946219



建筑与结构设计

- 01 南京国际博览中心三期展厅给排水设计解读
(刘燕)
- 04 “自由空间”状态中的理性逻辑探索
(刘东顺, 郝雨)
- 07 剪力墙结构建筑的剪力墙混凝土置换设计——以湖南某工程为例(朱双全)
- 10 绿色生态住宅小区绿化建设研究——以昆明万启金色领域小区项目为例(李文嘉)
- 13 被动式超低能耗建筑设计基础与应用(曹涛)
- 16 我国的建筑节能设计探讨(张鹏飞)

基础工程设计

- 19 双柱墩式桩基承台抗弯分析研究(黄明海)
- 22 地面光伏电站支架基础选型与设计
(戴维斯, 杨帆, 牛延宏)

- 25 旋挖钻与全套管跟进工艺在桥梁工程桩基施工中的应用(杨裕尧)
- 29 反循环配合旋挖钻在桩基工程中的应用
(徐毅, 韩鹏飞)
- 33 我国金属矿山采矿技术现状与发展趋势
(郑要伟)

公用工程设计

- 36 海绵城市理念在民用建筑给排水设计中的渗透思考(王涛)

市政·交通·水利工程设计

- 39 超高性能混凝土在简支变连续桥梁负弯矩区的应用(潘竺兰)
- 42 南宁轨道交通1号线南湖站车站设计(何苑)
- 47 汶马高速桑坪隧道进口危岩落石防治措施研究
(李兵, 刘峰, 马洪生, 张磊)
- 50 基于生态单元的城市新区道路绿化景观设计
(吴玲玲)
- 53 扣索与拱肋夹角对钢管拱拱圈应力及线型影响分析(余海)
- 56 水泥稳定砂岩碎石路面基层的性能研究
(刘红誉, 刘伟)
- 59 黑白复合排水沥青路面技术研究与应用
(李佳勋)
- 62 沥青路面层间温度分析及路面平整度的控制
(李岗, 吕品阳, 许翀)
- 65 探析城市轨道交通建筑节能设计的相关措施
(李祖瑞)
- 68 水利工程中防渗施工技术的应用思考
(徐峰, 郭志杰, 余阳)
- 70 水利水电工程试验检测的要点分析(周波)
- 74 城市轨道交通通风空调消声降噪设计要点分析
(黄国良)
- 76 水利工程中水环境生态治理防护技术研究
(祝伟)
- 79 高速公路选线过程中敏感区域的规避方法研究和探索(罗翔)
- 83 城市道路路面石灰土结构层设计合理性的分析
(康联国)

环境工程设计

- 85 污水处理中的污泥干燥新技术 (李艳星)

智能与信息化

- 88 遥感自动化监测手段在地理国情监测中的实践
(毛羽丰, 张琪)
- 91 BIM在质检高架仓库楼多专业复杂施工中的应用
(邹鹏威, 申诗文, 李健, 王安, 王梦平, 郭鹏)
- 94 BIM在地铁车辆基地建设中的应用前景探讨 (冯凯)
- 98 北斗单频PPP车道级试验结果分析 (李瑶, 黄永诚, 邱平武)
- 101 有轨电车系统控制和信息网络安全研究 (黄新生)
- 105 地理国情监测年度更新数据预处理方法研究
(张祖干)
- 108 数字航空摄影测量数据处理关键技术 (岑铭)
- 111 高速公路通信系统在收费和监控系统中的应用研究
(李伟)
- 113 高速公路通信系统新技术应用及其发展趋势
(刘亮)
- 115 测绘地理信息聚合系统建构及其功能实现
(杨阿兰)

工程施工技术

- 119 薄板浮式箱体焊接变形控制技术
(黄新磊, 余文明, 徐彪, 卢康, 彭旭)
- 122 横琴口岸及综合交通枢纽工程预留轨道交通地下空间建造技术
(黄俊, 郭涓晟, 李奇志, 刘维, 李华扬)
- 127 论超厚卵石地层地下连续墙成槽关键技术
(吴晓雷)
- 131 欠固结土条件下绿色装配式土钉基坑护坡施工技术
(汤亮, 纪来有, 李建华, 桓忠雄, 田瀚)
- 134 工字钢-混凝土组合梁在危桥改造中的应用
(姜红)
- 137 高填方区钻孔灌注桩施工工艺的探究
(余彪, 蒋文洋, 张波波)
- 139 钻孔灌注桩技术在路桥施工中的应用探讨
(马文奇)
- 141 大开口刀盘盾构机的施工优劣与问题分析 (李腾)

- 145 新型预制装配节点承载力计算及设计方法研究
(杜定发)
- 149 岩溶地区高铁特大桥桩基施工技术核心探究
(陈飞)
- 152 厨卫墙砖空鼓和脱落探索与分析 (王旭明)
- 155 建筑工程中桩基础施工技术的应用研究
(黄淑梅)
- 158 高速公路路基沉降处理技术的探讨 (欧阳龙)
- 160 公路软土地基地段高填方路基施工技术探讨
(汪琰钧)
- 163 智能化背景下市政土木工程施工技术的应用
(陈泽亮)
- 166 土木工程建筑施工技术及创新探究 (任晓斌)
- 169 绿色建筑施工与设计要点分析
(罗杰, 平晓雷, 殷姿)

工程项目管理

- 172 南部非洲市场关于建筑材料的变更索赔
(李志超)
- 175 新时期化工生产装置建设工程项目管理分析
(刘阳)
- 178 公路工程施工技术管理及养护方法分析
(戴陆梅)
- 181 农村饮水安全工程的施工难点与管理措施核心探寻
(杨言波)
- 183 高速公路桥梁高墩施工存在的问题及质量管理对策
(李红伯)
- 186 精细化管理在民用建筑施工管理中的应用分析
(苏琦)
- 189 建筑施工组织设计对工程造价的影响及策略分析
(李娇)
- 192 建筑施工总承包成本控制方法研究 (林环周)
- 195 施工进度与施工资料同步的重要性 (韩琪)
- 198 高速公路路面工程施工的质量控制 (许昕)

Architectural and Structural Design

- 01 Water Supply and Drainage Design of Phase III Exhibition Hall of Nanjing International Expo Center(LIU Yan)
- 04 Rational Logic Exploration on the State of "Free Space"(LIU Dong-shun, HAO Yu)
- 07 Concrete Replacement Design of Shear Wall in Shear Wall Structure Building—Taking a Project in Hunan as an Example(ZHU Shuang-quan)
- 10 Study on Greening Construction of Green Ecological Residential Community—Taking Wanqi Jinse Lingyu Residential Community Project in Kunming as an Example(LI Wen-jia)
- 13 Design Basis and Application of Passive Ultra Low Energy Consumption Building(CAO Tao)
- 16 Exploration on Building Energy-Saving Design in China(ZHANG Peng-yuan)

Engineering Design of the Ground

- 19 Bending Analysis of Pile Cap with Double Column Pier(HUANG Ming-hai)
- 22 Type Selection and Design of Support Foundation for Ground Photovoltaic Power Station(DAI Wei-si, YANG Fan, NIU Yan-hong)
- 25 Application of Rotary Drilling and Full Casing Follow-up Technology in Pile Foundation Construction of Bridge Engineering(YANG Yu-yao)
- 29 Application of Reverse Circulation with Rotary Drilling in Pile Foundation Engineering(XU Yi, HAN Peng-fei)
- 33 Current Situation and Development Trend of Metal Mining Technology in China(ZHENG Yao-wei)

Public Utilities Design

- 36 Penetration Thinking of Sponge City Concept in Water Supply and Drainage Design of Civil Buildings(WANG Tao)

Municipal-Traffic-Water Resources Engineering Design

- 39 Application of Ultra High Performance Concrete in Negative Moment Zone of Simply Supported-Continuous Bridge(PAN Zhu-lan)
- 42 Discussion on the Station Design of Nanhu Station of Nanning Rail Transit Line 1(HE Yuan)
- 47 Study on Prevention and Control of Rockfall at the Entrance of Sanping at Wenma Expressway(LI Bing, LIU Feng, MA Hong-sheng, ZHANG Lei)
- 50 Landscape Design of Road Greening in New Urban Area Based on Ecological Unit(WU Ling-ling)
- 53 Analysis of the Influence of the Angle Between Buckle Cable and Arch Rib on the Stress and Line Shape of Steel Pipe Arch Ring(YU Hai)

- 56 Performance Study of Cement-Stabilized Sandstone Gravel Pavement Base(LIU Hong-yu, LIU Wei)
- 59 Technology Research and Application of Black and White Composite Drainage Asphalt Pavement(LI Jia-xun)
- 62 Analysis of Temperature Between Asphalt Pavement Layers and Control of Pavement Smoothness(LI Gang, LYU Pin-yang, XU Chong)
- 65 Analysis of the Urban Rail Transit Building Energy Conservation Design Measures(LI Zu-rui)
- 68 Study on the Application of Anti-Seepage Construction Technology in Water Conservancy Project(XU Feng, GUO Zhi-jie, YU Yang)
- 70 Analysis on the Key Points of Test of Water Conservancy and Hydropower Engineering(ZHOU Bo)
- 74 Analysis of Noise Reduction Design Points of Ventilation and Air Conditioning in Urban Rail Transit(HUANG Guo-liang)
- 76 Research on Ecological Control and Protection Technology of Water Environment in Water Conservancy Project(ZHU Wei)
- 79 Research and Exploration on the Circumvention Method of Sensitive Area in Highway Route Selection(LUO Xiang)
- 83 Analysis of Reasonableness of Design of Lime Soil Structure Layer of Urban Road Surface(KANG Lian-guo)

Environment Engineering Design

- 85 New Technology of Sludge Drying in Sewage Treatment(LI Yan-xing)

Intelligentize and Informatization

- 88 Practice of Remote Sensing Automatic Monitoring Means in Geographical National Conditions Monitoring(MAO Yu-feng, ZHANG Qi)
- 91 Application of BIM in Multi Specialty Complex Construction of Quality Inspection Elevated Warehouse Building(ZOU Peng-wei, SHEN Shi-wen, LI Jian, WANG An, WANG Meng-ping, GUO Peng)
- 94 Discussion on the Application Prospect of BIM in the Construction of Metro Vehicle Base(FENG Kai)
- 98 Analysis of the Test Results of BDS Single Frequency PPP Lane Level(LI Yao, HUANG Yong-cheng, QIU Ping-wu)
- 101 Study on Cybersecurity of Control System and Information for Tram(HUANG Xin-sheng)
- 105 Research on Preprocessing Method of Annual Updating Data of Geographical Condition Monitoring(ZHANG Zu-gan)
- 108 Key Technology of Digital Aerial Photogrammetry Data Processing(CEN Ming)
- 111 Application Research on Expressway Communication System in Toll Collection and Monitoring System(LI Wei)
- 113 Application and Development Trend of New Technology of Expressway Communication System(LIU Liang)

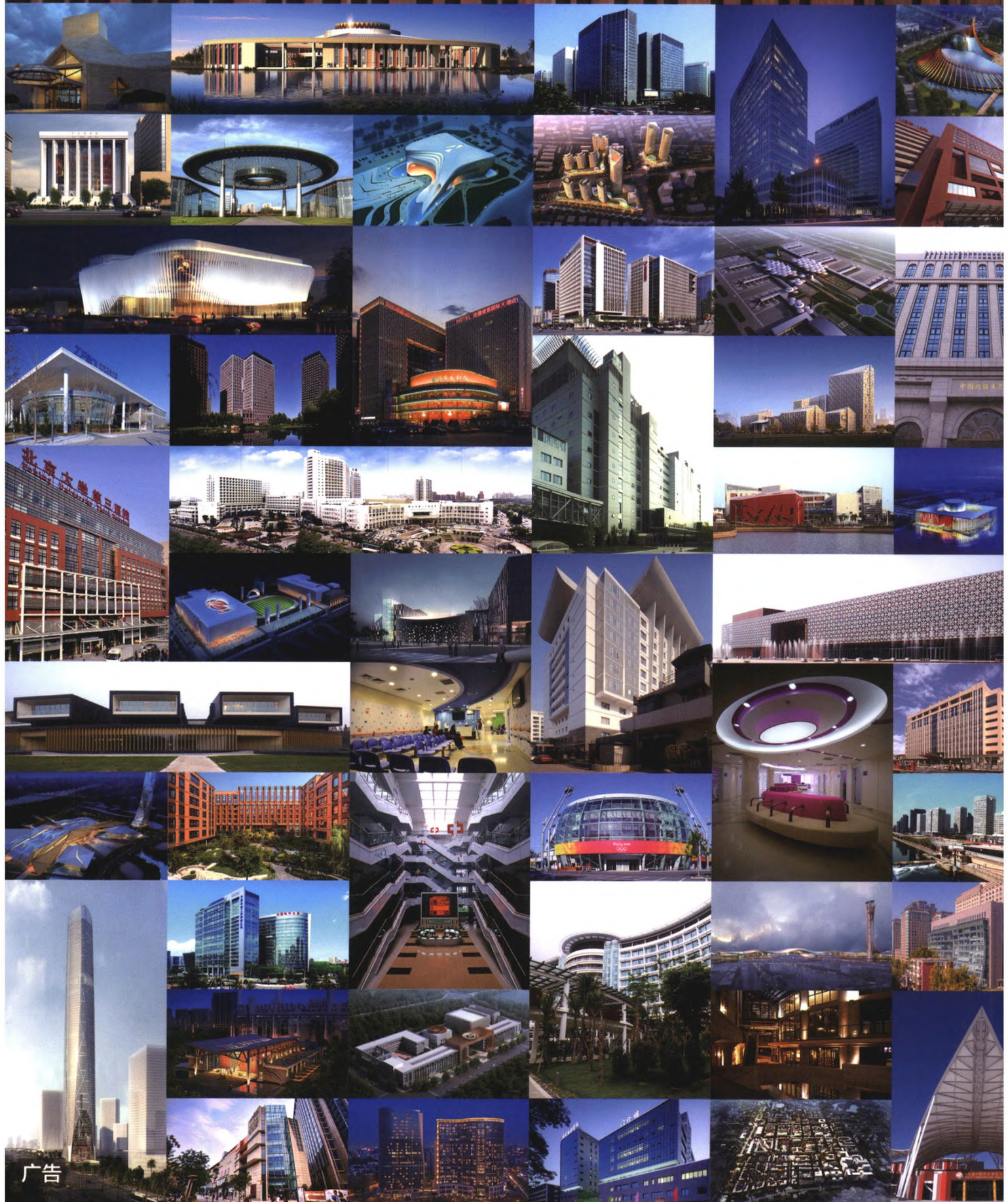
- 115 Construction and Function Realization of Surveying and Mapping Geographic Information Aggregation System(YANG A-lan)

Construction Technology

- 119 Control Technology of Welding Deformation of Thin-Plate Floating Box(HUANG Xin-lei, YU Wen-ming, XU Biao, LU Kang, PENG Xu)
- 122 Reserved Underground Space Construction Technology for Rail Transit in Hengqin Port and Comprehensive Transportation Hub Project(HUANG Jun, GUO Yan-sheng, LI Qi-zhi, LIU Wei, LI Hua-yang)
- 127 Analysis of the Key Technology of Trench Forming of Underground Diaphragm Wall in Super Thick Pebble Stratum(WU Xiao-lei)
- 131 Construction Technology of Green Prefabricated Soil Nailing for Slope Protection of Foundation Pit Under the Condition of Under Consolidated Soil(TANG Liang, JI Lai-you, LI Jian-hua, HUAN Zhong-xiong, TIAN Han)
- 134 Application of I-Steel-Concrete Composite Beams in the Reconstruction of Dangerous Dridges(JIANG Hong)
- 137 Research on Construction Technology of Cast-in-Situ Bored Pile in High Fill Area(SHE Biao, JIANG Wen-yang, ZHANG Bo-bo)
- 139 Discussion on the Application of Cast-in-Situ Bored Pile Technology in Road and Bridge Construction(MA Wen-qj)
- 141 Analysis of Construction Advantages and Disadvantages and Problems of Large Open Plate Shield Machine(LI Teng)
- 145 Study on Bearing Capacity Calculation and Design Method About New Types of Prefabricated Joint(DU Ding-fa)
- 149 Research on Core Construction Technology of Pile Foundation of Super Large High Speed Railway Bridge in Karst Area(CHEN Fei)
- 152 Exploration and Analysis of Hollowing and Falling off of Wall Tiles in Kitchen and Bathroom(WANG Xu-ming)
- 155 Research on the Application of Pile Foundation Construction Technology in Civil Engineering(HUANG Shu-mei)
- 158 Discussion on Settlement Treatment Technology of Highway Subgrade(OUYANG Long)
- 160 Discussion on Construction Technology of High Fill Subgrade in Soft Soil Foundation Base Section of Highway(WANG Yan-jun)
- 163 Application of Construction Technology of Municipal Civil Engineering Under Intelligent Background(CHEN Ze-liang)
- 166 Exploration on Construction Technology of Civil Engineering and Its Innovation(REN Xiao-bin)
- 169 Key Points Analysis of the Construction and Design of Green Building(LUO Jie, PING Xiao-lei, YIN Zi)

Project Management

- 172 Variation and Claim for Construction Materials in Southern Africa Market(LI Zhi-chao)
- 175 Analysis on Project Management of Chemical Plant Construction in New Period(LIU Yang)
- 178 Analysis on Technical Management and Maintenance Method of Highway Construction(DAI Lu-mei)
- 181 Exploration of Construction Difficulties and Management Measures of Rural Drinking Water Safety Projects(YANG Yan-bo)
- 183 Problems in High Pier Construction of Expressway Bridge and Countermeasures for Quality Management(LI Hong-bo)
- 186 Application Analysis of Fine Management in Construction Management of Civil Building(SU Qi)
- 189 Influence of Construction Organization Design on Project Cost and the Strategy Analysis(LI Jiao)
- 192 Research on Cost Control Method of General Contracting of Building Construction(LIN Huan-zhou)
- 195 The Importance of Synchronization of Construction Schedule and Construction Data(HAN Qi)
- 198 Quality Control of Highway Pavement Construction(XU Xin)



广告

地址：北京市西三环北路5号 邮编：100089 电话：(010) 68458355 传真：(010) 68732688 网址：<http://www.ippr.com.cn> 邮箱：office@ippr.net