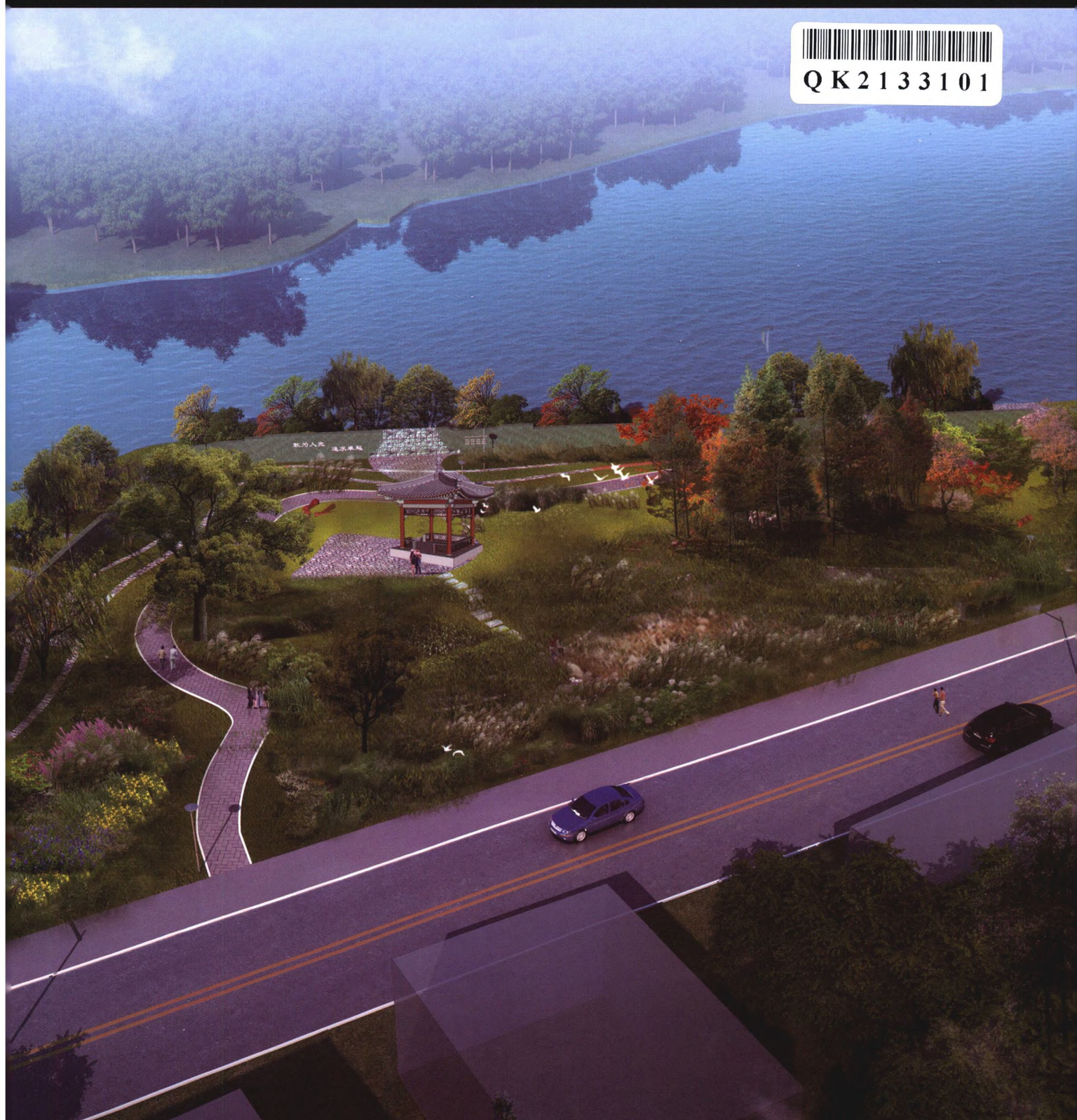
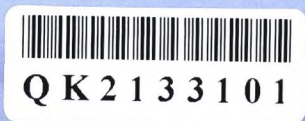




工程建设与设计

国家机械工业局工程建设中心 中国机械工业勘察设计协会 中国中元国际工程有限公司 CN 11-3914/TU 2021 年第09月上 总第463期



青山港湿地雨、污水整治及水环境修复工程
泛华建设集团有限公司

万方数据



动态资讯

- 01 “智慧城市基础设施与智能网联汽车协同发展试点工作交流会在京召开”等信息6则

建筑与结构设计

- 03 生物质发电厂干料棚常用结构形式比选
(谭丰, 汪秒)
- 05 卢塞尔体育场投标阶段设计方案优化思路和措施
(杨世杰)
- 10 某多层框架结构隔震分析及设计
(任超, 顾龙威)
- 12 纵筋配筋率对无腹筋钢筋混凝土梁受剪性能的影响研究(安涛)
- 15 寒冷地区大窗墙比住宅热舒适性数值模拟分析
(侯昱晟, 刘维, 刘灏)
- 18 装配式钢结构设计要点(李旭辉)
- 21 通信塔桅在气象和信号传输方面的应用
(郑书成, 刘仁涛)
- 24 绿色建筑设计与施工技术的应用
(刘建仪, 邹清华)

基础工程设计

- 27 滑坡稳定性及其治理方法分析
(贾林, 康富, 李付定, 孙晓鹏, 梁瑞)
- 30 基于弹性支点法的深基坑支护结构分析
(刘素萍)
- 33 高强预应力混凝土管桩承载特性研究及实际工程应用(李远方)
- 37 高层建筑软土地基桩基础施工技术研究(唐慧)

公用工程设计

- 40 能源站中给排水循环冷却水系统设计思考
(方婷婷)
- 43 超高层住宅建筑消防给排水系统设计研究(王涛)

市政·交通·水利工程设计

- 46 拱桥吊杆腐蚀疲劳可靠性评估方法研究
(陈绍军, 张强, 杨钧杰)
- 50 杭州紫之隧道地下立交分岔段设计施工关键技术
(胡贤国, 邹金杰)
- 53 公路填筑路基动力特性的地震台模拟试验研究
(陈玮)
- 56 湖底隧道主体结构防水准原型试验模型的设计与制作(王海啸, 刘伟, 谷坤鹏, 张君韬)
- 59 水闸除险加固工程建设中存在的问题和对策
(田麇)
- 62 海绵城市设计在工业厂区不同下垫面中的应用
(金雨薇, 王晖, 史长伟)
- 66 西安地铁三号线一期工程鱼一港接触网设计
(赵妹)
- 69 固增水电站垫层蜗壳有限元一体化计算分析
(张正香, 王雪, 蒋裕飞)

工业工程设计

- 72 挖掘机挖斗焊接生产线设计
(马闯, 王仲恒, 石静)
- 75 化工装置检修吊装设计(白文田)

环境工程设计

- 78 超滤技术在生活污水处理回用系统中的应用
(马凌雪)
- 80 某氧化沟工艺污水处理厂工艺诊断及优化运行建议措施
(林阳, 吴毅晖, 陈永明, 高忠卫, 田素)

智能与信息化

- 83 BIM技术在海塘工程中的应用
(宋叶青, 孟成成, 樊金甲, 潘国华)
- 86 于“建管一体化”的高速公路智能数据库架构设计(王翱, 井淼, 姚艺宁)

- 89 高坝水库区大型滑坡体管治与评价平台研究
(姚翠霞)
- 92 基于箱式模块化建筑的弱电智能化设计模式
(高欣)
- 95 路网监控应急指挥的信息化建设与管理经验分析
(张小兵)
- 97 无人机机载SAR在地理国情监测中的应用
(章九才)
- 100 北斗定位系统用于海上工程建设应急管理的思考
(李明亮)
- 103 化工企业火灾自动报警系统形式的选择
(王章刚)
- 106 岩土工程监测管理系统设计与实现(王伟才)
- 109 铁路通信传输安全问题及应对研究(陈绍娟)
- 112 智能机械臂在公路隧道事故救援和管养中的应用
分析(王文浩)

工程施工技术

- 114 富水软弱地层中超大断面矩形顶管施工地表沉降
控制技术研究(殷湘舰, 蔚宁哲, 周意红)
- 118 扣件式钢管高大模板支撑体系的施工安全研究
(莫谎, 周淳)
- 122 材料配合比对机制砂混凝土强度影响的试验研究
(李军伟, 郎贵军, 胡鑫, 袁斌, 陈建平)
- 126 软土地层盾构开仓方案比选与案例分析
(涂智溢, 陈丹锡)
- 129 厨卫墙砖空鼓和脱落预防方案
(王旭明, 张长春, 李辉)
- 136 公路桥梁墩身混凝土的开裂及防治策略
(杨春彦)
- 139 橡胶复合改性沥青纤维同步碎石封层关键技术
研究(宋德洲)
- 142 论土的固结试验方法及其原理和应用(刘仕娇)
- 145 粗格栅间及进水泵房地下结构施工工艺
(沈正龙)
- 148 高填方公路路基沉降以及防治措施探究
(武魁)
- 151 土压盾构施工对邻近平行隧道的影响研究
(庄国清)
- 154 变截面波形钢腹板连续箱梁合龙方案研究
(党立俊, 曹晓远)

- 158 大直径全护筒嵌岩式桩基础成孔施工技术
(张盛)
- 161 大跨暗挖车站无柱中板结构内力分析及施工技术
(赵英爽)
- 164 400 m级超深竖井导井定向纠偏施工技术(邓鹏)
- 167 基于某转体桥特点构建下的钢箱梁制作施工探索
(王天荣)
- 170 装配式叠合箱混凝土空心楼盖施工技术应用
(王玉桥)
- 173 土建基础施工中深基坑支护技术工艺分析
(张勇明)
- 176 房建工程典型悬挑脚手架施工方案的编制要点
探讨(杨代文, 仲鑫)
- 179 隧道施工中的常见问题分析及其处置措施
(陈晓忠)
- 181 门式桥塔上横梁提升安装施工关键技术
(俞沛然)
- 184 钢结构施工技术在土木工程中的应用(宋甜)

工程项目管理

- 187 设计引领在国际EPC总承包模式中的核心作用
(卢邓)
- 190 装配式建筑工程管理的影响因素与对策分析
(吴小平, 陆罡)
- 193 基于PDCA的地铁工程BIM施工管理模式研究与应用
(孙策)
- 197 某地铁穿越重大风险源安全风险综合管控
(杨萌, 刘永勤, 陈殿干)
- 200 信息技术下建筑工程项目进度控制管理分析
(向辉, 孙何军)
- 203 EPC总承包项目群的企业级计划管理
(王彬, 王伟, 曾航, 刘为飞, 陈雷)
- 206 改善基建项目竣工决算的若干思考——以新疆地
震局为例(韩军)
- 209 海外施工企业设备内部租赁探讨(燕晓东)
- 212 港口工程施工质量通病的防治管理(周伟)
- 216 建筑工程合同签订的法律风险与防控措施
(孙若寒, 孟翌)
- 219 电力线路改造工程中的成本与进度管理分析
(邹学通)

INFORMATION

- 01 "The Exchange Meeting on the Pilot Work of Coordinated Development of Smart City Infrastructure and Intelligent Networked Vehicles was Held in Beijing" Etc.6

Architectural and Structural Design

- 03 Comparison and Selection for Common Structure of Dry Material Shed in Biomass Power Plant(TAN Feng, WANG Miao)
- 05 Design Scheme Optimization Ideas and Measures in Tendering Stage for the Lusail Stadium Project(YANG Shi-jie)
- 10 Analysis and Design of Seismic Isolation of a Multi-Story Frame Structure(REN Chao, GU Long-wei)
- 12 Research on the Effect of Various Longitudinal Reinforcement Ratios on the Shear Behavior of Reinforced Concrete Beams Without Web Reinforcement(AN Tao)
- 15 Numerical Simulation and Analysis of Thermal Comfort of People in Residential Buildings with Large Window-Wall Ratio in Cold Area(HOU Yu-sheng, LIU Wei, LIU Yu)
- 18 Key Points of Assembly Steel Structure Design(LI Xu-hui)
- 21 Application of Communication Tower in Meteorology and Signal Transmission(ZHENG Shu-cheng, LIU Ren-tao)
- 24 Application of Green Building Design and Construction Technology(LIU Jian-yi,ZOU Qing-hua)

Engineering Design of the Ground

- 27 Analysis of Landslide Stability and Treatment Methods(JIA Lin, KANG Fu, LI Fu-ding, SUN Xiao-peng, LIANG Rui)
- 30 Analysis of Support Structure of Deep Foundation Pit Based on Elastic Fulcrum Method(LIU Su-ping)
- 33 Research on Bearing Characteristics of High Strength Prestressed Concrete Pipe Pile and Its Practical Application(LI Yuan-fang)
- 37 Research on Pile Foundation Construction Technology of High Rise Building in Soft Soil Foundation(TANG Hui)

Public Utilities Design

- 40 Reflection on the Design of Water Supply and Drainage Circulating Cooling Water System in Energy Station(FANG Ting-ting)
- 43 Design and Research on Fire Water Supply and Drainage System of Super High-Rise Residential Building(WANG Tao)

Municipal Traffic Water Resources Engineering Design

- 46 Corrosion Fatigue Reliability Assessment for Suspender in Arch Bridge(CHEN Shao-jun, ZHANG Qiang, YANG Jun-jie)
- 50 Key Technology for Design and Construction of Underground Interchange Bifurcation Section of Hangzhou Zizhi Tunnel(HU Xian-guo, ZOU Jin-jie)
- 53 Seismic Station Simulation Test on Dynamic Characteristics of Highway Filling Subgrade(CHEN Wei)
- 56 Design and Manufacture of Waterproof Quasi-Prototype Test Model on Main Structure of Under Lake Tunnel(WANG Hai-xiao, LIU Wei, GU Kun-peng, ZHANG Jun-tao)
- 59 Problems in the Construction of Sluice Danger Removal and Reinforcement Project and the Countermeasures(TIAN Ji)
- 62 Application of Sponge City Design in Different Underlying Surfaces of Industrial Factories(JIN Yu-wei, WANG Hui, SHI Chang-wei)
- 66 Overhead Lines Design of Yugang Zone for Xi'an Metro Line 3 Phase I Project(ZHAO Shu)
- 69 Finite Element Integrated Calculation and Analysis of Cushion Spiral Case of Guzeng Hydropower Station(ZHANG Zheng-xiang, WANG Xue, JIANG Yu-fei)

Industrial Engineering Design

- 72 Design of Welding Line Producing Excavator Bucket (MA Chuang, WANG Zhong-heng, SHI Jing)
- 75 Design of Maintenance and Hoisting of Chemical Plant(BAI Wen-tian)

Environment Engineering Design

- 78 Application of Ultrafiltration Technology in Domestic Sewage Treatment and Reuse System(MA Ling-xue)
- 80 Process Diagnosis and Operation Optimization of An Oxidation Ditch Process Wastewater Treatment Plant(LIN Yang, WU Yi-hui, CHEN Yong-ming, GAO Zhong-wei, TIAN Su)

Intelligentize and Informatization

- 83 Application of Building Information Modeling Technology in Seawall Project(SONG Ye-qing, MENG Cheng-cheng, FAN Jin-jia, PAN Guo-hua)
- 86 Highway Intelligent Database Architecture Design Based on "Integration of Construction and Management"(WANG Ao, JING Miao, YAO Yi-ning)
- 89 Study on the Management and Evaluation Platform of Large Scale Landslide in High Dam Reservoir Area(YAO Cui-xia)
- 92 Weak Current Intelligent Design Model Based on Modular Box Building(GAO Xin)
- 95 Information Construction and Management Experience of Network Monitoring and Emergency Command(ZHANG Xiao-bing)
- 97 Application of UAV Airborne SAR in Geographical Condition Monitoring(ZHANG Jiu-cai)

- 100** Thoughts on the Application of Beidou Navigation System in Offshore Engineering Construction Emergency Management(LI Ming-liang)
- 103** Selection of Automatic Fire Alarm System in Chemical Enterprises(WANG Zhang-gang)
- 106** Design and Realization of Geotechnical Engineering Monitoring and Management System(WANG Wei-cai)
- 109** Railway Communication Transmission Security Problems and the Countermeasures(CHEN Shao-juan)
- 112** Analysis on the Application of Intelligent Manipulator in Road Tunnel Accident Rescue and Management(WANG Wen-hao)

Construction Technology

- 114** Research on Surface Deformation Control Technology for Construction of Large Section Rectangular Pipe Jacking in Water-Rich Soft Stratum(YIN Xiang-jian, YU Ning-zhe, ZHOU Yi-hong)
- 118** Research on Construction Safety of Pipe High Formwork Support System with Fasteners(MO Huang, ZHOU Chun)
- 122** Experimental Study on the Influence of Material Mix Ratio on the Strength of Machine-Made Sand Concrete(LI Wei-jun, LANG Gui-jun, HU Xin, YUAN Bin, CHEN Jian-ping)
- 126** Scheme Comparison and Case Study of Shield Warehouse Opening in Soft Soil Layer(TU Zhi-yi, CHEN Dan-xi)
- 129** Prevention Scheme for Hollowing and Falling off of Kitchen and Bathroom Wall Brick(WANG Xu-ming, ZHANG Chang-chun, LI Hui)
- 136** Concrete Cracking of Highway Bridge Pier and Its Prevention Strategy(YANG Chun-yan)
- 139** Research on Key Technology of Rubber Composite Modified Asphalt Fiber Synchronous Crushed Stone Seal(SONG De-zhou)
- 142** Analysis of Soil Consolidation Test Method and Its Principle and Application(LIU Shi-jiao)
- 145** Construction Technology of Underground Structure of Coarse Screen House and Inlet Pump House(SHEN Zheng-long)
- 148** Research on Subgrade Subsidence and Prevention Measures of High Fill Highway(WU Kui)
- 151** Study on the Influence of Shield Construction on Adjacent Parallel Tunnels(ZHUANG Guo-qing)
- 154** Study on Closure Scheme of Continuous Box Girder With Variable Section Corrugated Steel Webs(DANG Li-jun, CAO Xiao-yuan)
- 158** Construction Technology of Large-Diameter Rock-Socket Pile with Total Steel Casing Pipe(ZHANG Sheng)
- 161** Internal Force Analysis and Construction Technology of Columnless Plate Structure in Large-Span Underground Excavation Station(ZHAO Ying-shuang)
- 164** Construction Technology of Directional Deviation Correction of 400 m Class Ultra Deep Vertical Shaft(DENG Peng)
- 167** Fabrication and Construction of Steel Box Girder Based on the Characteristics of a Revolving Bridge(WANG Tian-rong)
- 170** Application of Construction Technology of Prefabricated Composite Box Concrete Hollow Floor(WANG Yu-qiao)

- 173** Technological Analysis of Deep Foundation Pit Support Technology Based on Civil Foundation Construction(ZHANG Yong-ming)
- 176** Discussion on the Main Compiling Points of Typical Cantilever Scaffold Construction Scheme in Housing Construction Project(YANG Dai-wen, ZHONG Xin)
- 179** Analysis of Common Problems in Tunnel Construction and Its Treatment Measures(CHEN Xiao-zhong)
- 181** Key Technology of Upper Separator Lifting and Installation of Portal Bridge Tower(YU Pei-ran)
- 184** Application of Steel Structure Construction Technology in Civil Engineering(SONG Tian)

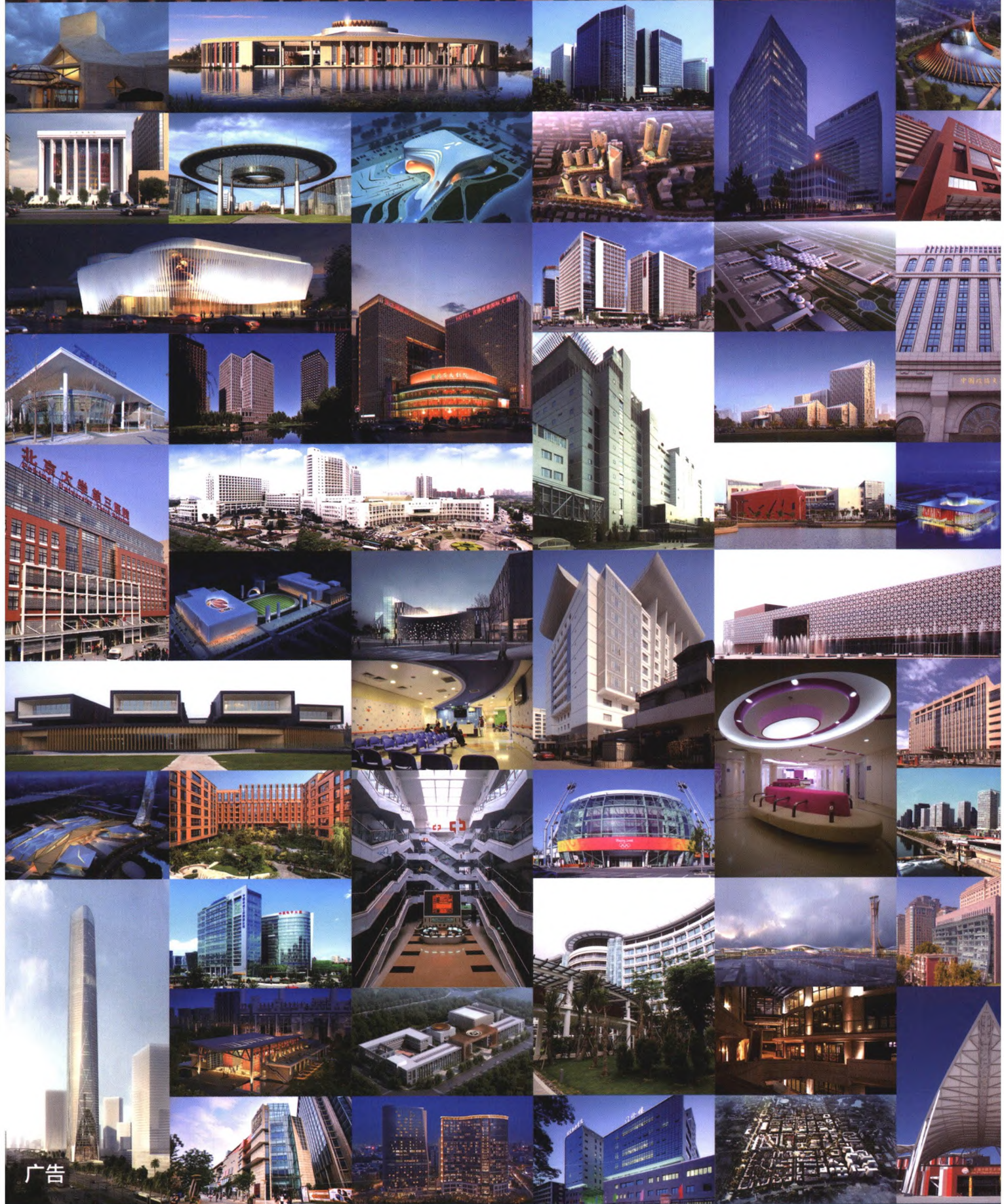
Project Management

- 187** The Core Role of Design Leading in the International EPC General Contracting Model(LU Deng)
- 190** Analysis on the Influencing Factors and Countermeasures of Prefabricated Construction Project Management(WU Xiao-ping, LU Gang)
- 193** Research and Application of BIM Construction Management Mode of Metro Engineering Based on PDCA(SUN Ce)
- 197** Comprehensive Safety Risk Management and Control of Major Risk Sources of Subway Crossing(YANG Meng, LIU Yong-qin, CHEN Dian-gan)
- 200** Analysis of Construction Project Schedule Control Management Under Information Technology(XIANG Hui, SUN He-jun)
- 203** Enterprise-Level Planning Management of EPC General Contracting Project Group(WANG Bin, WANG Wei, ZENG Hang, LIU Wei-fei, CHEN Lei)
- 206** Some Thoughts on Improving the Final Accounts of Construction Projects——Taking Xinjiang Seismological Bureau as an Example(HAN Jun)
- 209** Discussion on Equipment Internal Leasing of Overseas Construction Enterprises(YAN Xiao-dong)
- 212** Prevention and Management of Common Quality Defects of Port Engineering Construction(ZHOU Wei)
- 216** Legal Risks and Prevention and Control Measures of Construction Contract Signing(SUN Ruo-han, MENG Zhao)
- 219** Analysis of Cost and Schedule Management in Power Line Reconstruction Project(ZOU Xue-tong)



中国中元国际工程有限公司

CHINA IPPR INTERNATIONAL ENGINEERING CO., LTD.



广告

地址：北京市西三环北路5号 邮编：100089 电话：(010) 68458355 传真：(010) 68732688 网址：<http://www.ippr.com.cn> 邮箱：office@ippr.com.cn