

ENGINEERING AND CONSTRUCTION
GONGCHENG YU JIANSHE

ISSN 1673-5781
CN 34-1296/N

工程与建设

第 37 卷 第 2 期
Vol.37 No.2

2023年4月

中国学术期刊全文数据库 万方数据库-中国核心期刊(遴选) 《中文科技期刊数据库》来源期刊
《超星期刊域出版平台》全文收录期刊 长江文库



ISSN 1673-5781



9 771673 578233

中钢集团马鞍山矿山研究总院股份有限公司

工程与建设

第三十七卷

第二期

二〇二三年四月

工程与建设

第 37 卷第 2 期

(总第 146 期)

2023 年 4 月

[期刊基本参数] CN 34-1296/N * 1987 * b * A4 * 400 * zh * P * ¥20.00 * 1 000 * 105 * 2023-04

目次

❖ 研究与探索

- 公路桥梁规范中温度自应力计算方法误差的理论分析..... 汪吉豪(409)
- 基于 BIM 的桥梁养管系统开发..... 徐亮, 戴玮, 孙莉, 何飞(412)
- 基于气动弹性共振的无叶发电风机发电原理研究..... 高子涛, 朱戴武, 王靖国, 雷金明, 危涛(416)
- 扬州市雨水资源化利用的探索..... 卢涛, 石智如(420)
- 新型不锈钢直立锁边支座研发与有限元模拟研究..... 张驰, 高建发, 王静峰, 刘用(423)
- 再生水回用工程若干问题思考..... 朱仁仁(429)
- 环境变化对大马营河流域水沙的影响..... 周翔(433)
- 基于模糊层次分析法的煤矿通风系统安全评价研究..... 马昆(436)
- 神经网络在电气安全评价中的应用研究..... 李旭强(439)
- 寒区公路隧道保温层参数与保温技术研究..... 吴华(442)
- 岩溶及采空区塌陷的地质灾害研究..... 艾其凯(447)

❖ 建设规划

- 特色田园产业引领下探寻村庄规划发展之路
——以郎溪县十字镇新和村为例..... 游晓琴(450)
- 基于文化遗产展示为视角的公园博物馆规划研究
——以山东莱阳白垩纪国家地质公园博物馆规划项目为例..... 李海强(455)
- 基于恢复性环境理论的大学校园林下空间景观评价分析
——以南京农业大学为例..... 李书舟, 林若凡, 沈妍, 钟佳汛(458)

❖ 勘察与测量

- 基于时序高分辨率遥感影像的城中村变化监测分析..... 周利利(464)
- 现代测绘技术在工程测量中的应用研究..... 李骄阳(468)
- 基于无人机摄影技术的矿山测量分析研究..... 郑博(472)
- 无人机遥感摄影图像处理技术研究..... 蒋超(475)
- 基于三维激光扫描仪的地形测量及应用..... 罗晶(478)
- 面向小流域管理的水土保持遥感监测方法研究..... 杨政泽(481)
- 不动产测量坐标转换方法及精度研究..... 张德宇(485)
- 云平台监测系统在水土保持数据监测中的应用研究..... 李凯嘉(488)
- 倾斜摄影测量在水利工程测绘中的应用..... 李高潮, 田娜(491)
- 摄影测量与遥感的融合影像质量综合评价方法研究..... 阮迎贺(495)

❖ 工程设计

- 某流域治理工程的智慧水务系统设计与实践分析..... 王艺晓(498)
- 岩质边坡的稳定性分析及生态防护设计..... 张国庆(501)
- 市政雨水排水工程设计研究
——以沿铁北路给排水工程为例..... 李军(504)
- 大跨越输电铁塔结构设计及计算分析..... 孟宪乔, 王静峰, 程安乐, 郑治祥, 张树林(507)

高铁枢纽停车设施规模预测研究	曹丽艳(512)
预留上盖P+R停车楼的地铁车站结构设计	王 斌(516)
滨水环境下的产业园区空间设计策略	
——以阳光创谷E区为例	郝 蕾(520)
楼德西互通立交设计剖析	王玉飞, 李 强(523)
平原区旅游公路提升设计研究	
——以符离大道宿城至皖苏界段改建工程为例	马 婧, 单文胜, 李 罡(528)
雨洪同期、雨洪模型在钦州白石湖排涝工程的应用	石定球(531)
阜阳市四座人行天桥设计方案研究	杨 斐(536)
基于山体视廊保护的都市设计研究	
——以合肥市大蜀山片区为例	吴 桐, 杨剑雄, 余蕴琦(539)

❖ 建筑结构

房建施工中现浇梁板模板的要求及质量控制	朱舒东(543)
常泰长江大桥0号墩横梁托架设计与计算分析	黄健伟, 吴 柱(546)
吊杆布置形式对拱桥受力特性的影响	魏庆庆, 张树清(550)
并列式公铁两用钢桁梁桥极限承载能力分析	吉军立, 储胡照, 丁福凡, 王佐才(554)
架枳水库导流洞堵头结构的稳定性分析	李玉宾(559)
建筑施工模板支撑体系可靠性研究	孙志勇, 房善奇(562)
大跨人行斜拉桥动力分析及振动控制	韩腾腾(565)
六跨连续刚构桥中跨合龙顶推力计算与分析	刘宇航(569)
考虑桩基条件下的垃圾池底板结构损伤区及渗流场分析	万 曙, 王静峰, 胡子明, 闫凤涛, 渠金虎(573)
地铁运营隧道结构变形监测的数据处理及分析	高 帅, 符新新, 曹海青, 任 干, 马全明(578)
城市中心区高层建筑群风环境模拟分析及优化策略研究	陈 琳(581)
混凝土板受压区两正交方向表面波波速-应力相关性研究	谈 杰, 陈小佳(584)

❖ 地基与基础

厚层软土中的连通涵地基处理方案分析和探讨	李聪磊(589)
路堤荷载下联合管桩加固复合地基桩-土应力比和沉降分析	张伟杰(592)
软土不排水抗剪强度及循环弱化特性试验研究	丁剑桥(596)
深厚淤泥中超大型调蓄池基坑支护设计及有限元分析	肖山喜, 杨 游(600)
某地铁车站基坑降水方案设计	刚绪广(604)
深水基础哑铃形承台钢围堰设计与受力研究	何文涛(609)

❖ 试验与检测

开孔结构应力场的DIC测试技术研究	隋铭宇, 邵新宇, 张 诚, 吴伟鑫, 田永浩, 曹家漩(615)
公路隧道检测中探地雷达图像自动解释算法研究	刘闯辉(619)
大跨度公路隧道施工中变形监控量测及应用	周满兵(623)
大型船闸闸室墙移动模机云检测技术研究	刘春梅, 苏 颖, 杨 欢, 王静峰, 刘 用(627)
3D+2D视觉手段联合检测钢管外表缺陷的研究	刘小楠, 窦曼莉, 聂建华, 鲍 磊(635)
深层水泥搅拌桩取芯结果验证分析及改进	胡 煦(638)

❖ 施工技术

深埋引水隧洞初期支护时机研究	徐 洁, 黄 铭(642)
建筑地基基础工程施工技术研究	石飞翔(646)
基于建筑施工中的防水防渗施工技术分析	赵静媛(649)
公路桥梁建设中现浇箱梁施工技术的应用	汪 军(651)
旋挖钻孔灌注桩施工常见质量问题及对策探讨	丁 奎(654)
市政给排水施工中长距离顶管施工技术研究	高亮亮, 张 琳(657)
高桩码头桩基施工工艺及质量控制技术研究	鞠文程(660)

小集物流专用线跨唐包铁路施工关键技术与安全监测研究	马建军(663)
浅谈矮塔斜拉桥超大节段梁段悬臂施工技术	伍京湘(669)
新孟河延伸拓浚工程黄山河地涵沉井施工技术探讨	陈小威, 汤阳, 宋力, 闵瑞(672)
某工程大型地下室中预应力抗浮锚杆的施工工艺与技术应用	葛亮, 王艺超, 李亚军, 贾瑞涛, 贾瑞钰(675)
高层房屋建筑工程外墙防渗漏施工技术	李文勤(679)
高层房屋建筑工程大体积混凝土施工技术	王晓娟(682)
钢结构构件初装位置精调的三维坐标转换法	范思思, 范喆宇(685)
市政公路工程路基路面施工技术与质量控制措施	赖冠斌(689)
城市污水处理工艺对水质提升效果的比较研究	张小康(692)
城际铁路大跨度连续梁桥上跨高速公路挂篮悬臂施工安全控制技术研究	王宏志(695)
内河老码头新增集装箱装卸功能技术探讨	毛成(699)
“墙+桩”组合式地下连续墙施工技术在上软下硬复合地层中的应用	余秀平, 吴亚磊(703)
某大型体育馆基坑环形顺逆分区的施工方法与有限元分析	张弛, 于亚磊(707)

❖ 改造与加固

旧水泥路面微裂均质化再生技术在城市道路改造中的应用	马旭峰(713)
某实验中心空调系统运行数据分析	金朝, 周沛, 徐永恒, 王松杰, 王伟, 董东(717)
MIKE21 软件在淮河河道生态修复工程中的应用分析	杨春瑞, 胡坤怀, 张宏远, 吕星汝(721)

❖ 抗震研究

新型磁流变弹性体隔震支座研究	潘畅(726)
基于位移的某框剪结构抗震设计及易损性研究	杨海浪(729)

❖ 建筑材料

基于 CPTU 黏性土不排水抗剪强度研究	马响平, 刘宁(733)
武汉市高新大道连续配筋复合式路面的应用研究	郭洪阳, 尹万杰, 杜飞, 梅朝(736)
水工结构大体积混凝土温度监测及浇筑施工技术分析	赵飞, 方禹(739)
城市主干道常温沥青混合料设计技术研究	王艳(743)
废弃混凝土再生粗骨料的性能研究	范海波(746)

❖ 工程管理

深基坑支护施工项目成本控制探析	魏学军(750)
EPC 模式下石油化工项目施工进度控制方法	宗悦(754)
地铁工程造价的关键影响因素与控制管理方案	江美霞, 李德林, 范晓蕾(757)
BIM 参数管理在项目中的应用分析	谢豪(760)
基于 BIM 和大数据的建筑工程质量管理研究	王汉(765)
基于全生命周期的房地产开发项目风险评价与控制研究	巫建标(769)
房屋建筑工程造价动态管理与优化策略研究	徐茂武(772)
建设工程项目招投标体系优化研究	雷志华(776)
建筑结构设计比选和住宅造价成本控制的研究	孙浩(779)
智能化矿山采矿技术中的安全管理问题探讨	王光(782)
装配式建筑施工成本分析及成本控制研究	郭晓宇(785)
基于 BIM 的机电安装工程施工质量控制方法研究	杨龙(788)
建筑工程项目质量管理分析与应用	
——以合肥某安置点为例	张经纬, 雷庆关, 陈东, 唐礼平, 张城(791)
基于 BIM 技术的房建工程施工管理应用研究	郝卫星(794)
房地产开发企业大运营管理体系下成本工作的变革及思考	马秀玲(797)

敬告作者	(522)
版权声明	(588)
投稿须知	(603)

ENGINEERING AND CONSTRUCTION

Vol. 37 No. 2

Serial No. 146

Apr. 2023

CONTENTS

Research and Discussion

- Error analysis of thermal stress calculation method in current bridge specification WANG Ji-hao(409)
- Development of bridge maintenance and management system based on BIM
..... XU Liang, DAI Wei, SUN Li, HE Fei(412)
- Research on the generating principle of leafless power generation fan based on pneumatic elastic resonance
..... GAO Zi-tao, ZHU Dai-wu, WANG Jing-guo, LEI Jin-ming, WEI Tao(416)
- The exploration of the utilization of rainwater resources in Yangzhou City LU Tao, SHI Zhi-ru(420)
- Development and finite element simulation of a new standing seam stainless steel support
..... ZHANG Chi, GAO Jian-fa, WANG Jing-feng, LIU Yong(423)
- Thinking on some problems of reclaimed water reuse project ZHU Ren-ren(429)
- Impact of changing environment on water and sediment in Damaying River basin ZHOU Xiang(433)
- Study on safety evaluation of coal mine ventilation system based on fuzzy analytic hierarchy process MA Kun(436)
- Application of neural network in electrical safety assessment LI Xu-qiang(439)
- Study on thermal insulation layer parameters and thermal insulation technology of highway tunnel in cold area
..... WU Hua(442)
- Study on geological hazards of karst and goaf collapse AI Qi-kai(447)

Construction planning

- Explore the road of village planning and development under the guidance of rural industry with special characteristics
—Taking Xinhe Village, Shizi Town, Langxi County as an Example YOU Xiao-qin(450)
- Research on the planning of parks and museums from the perspective of cultural heritage display
—Taking the planning project of the Cretaceous National Geopark Museum in Laiyang, Shandong Province as an example
..... LI Hai-qiang(455)
- Evaluation and analysis of undergrowth space landscape in university campuses based on the theory of restorative environment
—Taking Nanjing Agricultural University as an Example
..... LI Shu-zhou, LIN Ruo-fan, SHEN Yan, ZHONG Jia-xun(458)

Reconnaissance and Survey

- Monitoring and analysis of urban village change based on time-series high-resolution remote sensing images
..... ZHOU Li-li(464)
- Application of modern surveying and mapping technology in engineering surveying LI Jiao-yang(468)
- Research on mine survey and analysis based on UAV photography technology ZHENG Bo(472)
- Research on image processing technology of UAV remote sensing photography JIANG Chao(475)
- Topographic survey based on 3D laser scanner and its application LUO Jing(478)
- Study on remote sensing monitoring method of soil and water conservation for small watershed management
..... YANG Zheng-ze(481)
- Research on coordinate transformation method and accuracy of real estate measurement ZHENG De-yu(485)
- Application of cloud platform monitoring system in soil and water conservation data monitoring LI Kai-jia(488)
- Application of tilt photogrammetry in water conservancy engineering surveying and mapping LI Gao-chao, TIAN Na(491)
- Research on comprehensive evaluation method of fusion image quality of photogrammetry and remote sensing
..... RUAN Ying-he(495)

Engineering Design

- Design and practice analysis of smart water system for a watershed management project WANG Yi-xiao(498)
- Stability analysis and ecological protection design of rock slope ZHANG Guo-qing(501)
- Study on design of municipal rainwater drainage engineering
—Taking Yantie North Road water supply and drainage engineering as an example LI Jun(504)
- Design and research of long span transmission tower
..... MENG Xian-qiao, WANG Jing-feng, CHENG An-le, ZHENG Zhi-xiang, ZHANG Shu-lin(507)
- High-speed rail station parking facilities scale prediction research CAO Li-yan(512)
- Structural design of subway station with reserved upper cover P+R parking building WANG Bin(516)

Spatial design strategy of industrial park in waterfront environment
 —Take Sunshine Valley (E) as an example HAO Lei(420)
 Analysis on the design of Lou Dexi Interchange WANG Yu-fei, LI Qiang(523)
 Study on lifting design of tourism highway in plain area
 —Taking the reconstruction project from Fucheng avenue to Anhui Jiangsu boundary as an example
 MA Jing, SHAN Wen-sheng, LI Gang(528)
 Application of rainfall-flood model in baishi Lake drainage project in Qinzhou SHI Ding-qiu(531)
 Scheme design of four pedestrian overpasses in Fuyang YANG Fei(536)
 Urban design of Dashu Mountain Area from the perspective of mountain view gallery protection
 WU Tong, YANG Jian-xiong, YU Yun-qi(539)

Building Structure

Requirements and quality control of cast-in-situ beam and slab formwork in housing construction ZHU Shu-dong(543)
 Design and calculation analysis of cross beam bracket for pier No.0 of Changtai Yangtze River Bridge
 HUANG Jian-wei, WU Zhu(546)
 Influence of hanger layout on mechanical characteristics of arch bridge WEI Qing-qing, ZHANG Shu-qing(550)
 Ultimate bearing capacity of the parallel rail-cum-road steel truss bridge
 JI Jun-li, CHU Hu-zhao, DING Fu-fan, WANG Zuo-cai(554)
 Stability analysis of plug structure of diversion tunnel in Jianjia Reservoir LI Yu-bin(559)
 Study on the reliability of construction formwork support system SUN Zhi-yong, FANG Shan-qi(562)
 Dynamic analysis and vibration control of long span cable-stayed bridge HAN Teng-teng(565)
 Calculation and analysis of closure top thrust of a six-span continuous rigid frame bridge LIU Yu-hang(569)
 Analysis of damage zone and seepage field of bottom plate structure of waste dump considering pile foundation conditions
 WANG Shu, WANG Jing-feng, HU Zi-ming, YAN Feng-tao, QU Jin-hu(573)
 Data processing and analysis of structural deformation monitoring of subway operation tunnel
 GAO Shuai, FU Xin-xin, CAO Hai-qing, REN Gan, MA Quan-ming(578)
 Simulation analysis and optimization strategy of wind environment of high-rise buildings in urban central area
 CHEN Lin(581)
 Wave velocity-stress correlation study of surface acoustic waves in two orthogonal directions in concrete slabs under pressure
 TAN Jie, CHEN Xiao-jia(584)

Foundation and Basement

Analysis and discussion on the treatment scheme of connected culvert foundation in thick soft soil LI Cong-lei(589)
 Analysis of pile-soil stress ratio and settlement of composite foundation strengthened by combined pipe pile under embankment
 load ZHANG Wei-jie(592)
 Experimental study on undrained shear strength and cyclic weakening characteristics of soft soil DING Jian-qiao(596)
 Foundation pit support design and finite element analysis of super large storage tank in deep silt
 XIAO Shan-xi, YANG You(600)
 Design of dewatering scheme for foundation pit of a subway station GANG Xu-guang(604)
 Study on the design and stress of steel cofferdam with dumbbell shaped cushion cap for deep water foundation
 HE Wen-tao(609)

Test and Inspection

Research on DIC testing technology for stress field of open hole structure
 SUI Ming-yu, SHAO Xin-yu, ZHANG Cheng, WU Wei-xin, TIAN Yong-hao, CAO Jia-xuan(615)
 Research on automatic interpretation algorithm of ground penetrating radar image in highway tunnel detection
 LIU Chuang-hui(619)
 Application of deformation monitoring measurement in large-span highway tunnel construction ZHOU Man-bing(623)
 Research on cloud detection technology of mobile formwork for large ship lock chamber wall
 LIU Chun-mei, SU Ying, YANG Huan, WANG Jing-feng, LIU Yong(627)
 Research on the joint detection of steel pipe surface defects using 3D+2D visual techniques
 LIU Xiao-nan, DOU Man-li, NIE Jian-hua, BAO Lei(635)
 Verification analysis and improvement of core sampling results for deep cement mixing piles HU Xu(638)

Construction Technique

Study of initial supporting time of deep buried diversion tunnel XU Jie, HUANG Ming(642)
 Research on construction technology of Building foundation Engineering SHI Fei-xiang(646)
 Based on the analysis of waterproof and anti-seepage construction technology in building construction ... ZHAO Jing-yuan(649)
 Application of cast-in-situ box girder construction technology in highway bridge construction WANG Jun(651)
 Discussion on common quality problems and countermeasures in construction of rotary drilling cast-in-place pile
 DING Kui(654)
 Research on long-distance pipe jacking construction technology in municipal water supply and drainage construction
 GAO Liang-liang, ZHANG Lin(657)
 Research on pile foundation construction technology and quality control technology of high-piled wharf JU Wen-cheng(660)

- Research on key technology and safety monitoring of XiaoJi special freight railway line crossing Tangbao Railway MA Jian-jun(663)
- Construction technology of cantilever section of short tower cable-stayed bridge WU Jing-xiang(669)
- Discussion on the construction technology of open caisson of Huangshan River ground culvert in the extension and dredging project of Xinmeng River CHEN Xiao-wei, TANG Yang, SONG Li, MIN Rui(672)
- Construction technology and technical application of prestressed anti-floating anchor in a large-scale basement GE Liang, WANG Yi-chao, LI Ya-jun, JIA Rui-tao, JIA Rui-yu(675)
- Anti-leakage construction technology for exterior wall of high-rise building engineering LI Wen-qin(679)
- Mass concrete construction technology for high-rise building engineering WANG Xiao-juan(682)
- Three dimensional coordinate transformation method for fine adjustment of initial installation position of steel structure components FAN Si-si, FAN Zhe-yu(685)
- Construction technology and quality control measures for subgrade and pavement of municipal highway engineering LAI Guan-bin(689)
- Comparative study on the effect of urban sewage treatment processes on water quality improvement ZHANG Xiao-kang(692)
- Study on safety control technology of hanging basket cantilever construction of large span continuous beam bridge of intercity railway crossing expressway WANG Hong-zhi(695)
- Discussion on new container handling function technology of old inland river wharf MAO Cheng(699)
- Application of "wall+pile" combined diaphragm wall construction technology in upper soft and lower hard composite strata YU Xiu-ping, WU Ya-lei(703)
- Construction method and finite element analysis of circular forward and backward zoning of a large gymnasium foundation pit ZHANG Chi, YU Ya-lei(707)

Retrofit and Strengthening

- Application of micro-crack regeneration technology of old cement pavement in urban road reconstruction MA Xu-feng(713)
- Operation data analysis of the air-conditioning system in an experimental center JIN Chao, ZHOU Pei, XU Yong-heng, WANG Song-jie, WANG Wei, DONG Dong(717)
- The application analysis of MIKE 21 software in Huaihe Riverway ecological restoration project YANG Chun-rui, HU Kun-huai, ZHANG Hong-yuan, LYU Xing-ru(721)

Seismic research

- Research on new type magnetorheological elastomer seismic isolation bearing PAN Yang(726)
- Displacement-based seismic design and vulnerability study of a frame-shear wall structure YANG Hai-lang(729)

Building Material

- Study on undrained shear strength of cohesive soil based on CPTU MA Xiang-ping, LIU Ning(733)
- Application research of composite continuously reinforced concrete pavement on Gaoxin Avenue in Wuhan City GUO Hong-yang, YIN Wan-jie, DU Fei, MEI Chao(736)
- Temperature control detection and pouring technology of hydraulic mass concrete ZHAO Fei, FANG Yu(739)
- Research on design technology of normal temperature asphalt mixture for urban trunk road WANG Yan(743)
- Study on properties of recycled coarse aggregate from waste concrete FAN Hai-bo(746)

Engineering Management

- Preliminary discussion on cost control of deep foundation pit supporting construction Projects WEI Xue-jun(750)
- Construction schedule control method of petrochemical project under EPC mode ZONG Yue(754)
- Key influencing factors and control management scheme of metro project cost WANG Mei-xia, LI De-lin, FAN Xiao-lei(757)
- The research and application of BIM parameter management in the project XIE Hao(760)
- Research on construction project quality management based on BIM and big data WANG Han(765)
- Research on risk assessment and control of real estate development projects based on the whole life cycle WU Jian-biao(769)
- Research on dynamic management and optimization strategy of housing construction cost XU Mao-wu(772)
- Study on optimization of bidding system for construction projects LEI Zhi-hua(776)
- Research on comparison and selection of architectural structure design and cost control of residential building SUN Hao(779)
- Discussion on safety management in intelligent mining technology WANG Guang(782)
- Research on cost analysis and cost control of prefabricated building construction GUO Xiao-yu(785)
- Research on construction quality control method of electromechanical installation engineering based on BIM YANG Long-long(788)
- Analysis and application of construction project schedule management
—Take the resettlement site in Hefei city as an example ZHANG Jing-wei, LEI Qing-guan, CHEN Dong, TANG Li-ping, ZHANG Cheng(791)
- Research on the application of building construction management based on BIM technology HAO Wei-xing(794)
- Reform and thinking of cost work under the real estate large operation management system of real estate development enterprises MA Xiu-ling(797)

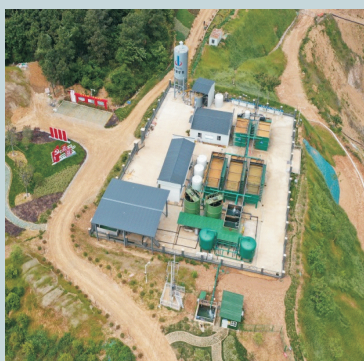
CASE 典型案例



安徽省池州市长九（神山）灰岩矿项目7000万吨/年建设工程（矿山部分）设计



马钢罗河矿除尘改造项目



酸性矿坑水处理工程



广东顺兴石场有限公司年产480万m³建筑用花岗岩扩产露天开采设计



铜陵有色集团冬瓜山铜矿万吨选矿废水循环再利用工程



微细粒混合铁矿石阶段磨矿-弱磁-强磁-阴离子反浮选工艺应用现场



铁矿伴生铜硫资源高效综合利用技术应用现场



铜锌铁多金属矿选矿技术现场应用

地址：安徽省马鞍山市经济开发区西塘路666号

电话：0555-2404808（综合管理部）

<https://www.mimr.cn/>