

ISSN 1005-8567

CN 44-1243/S

● 广东省优秀科技期刊

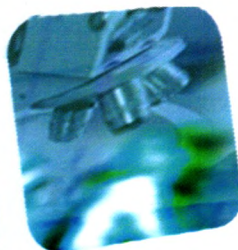
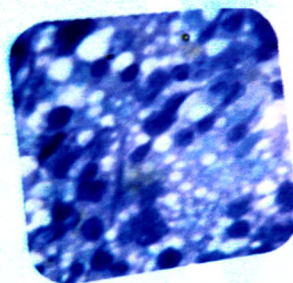
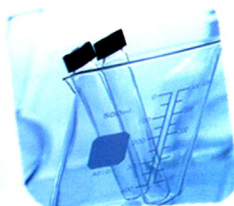
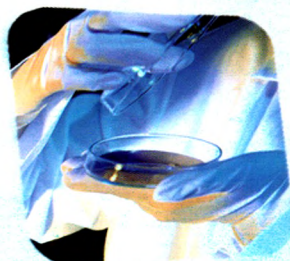
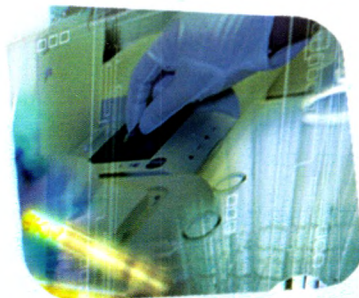
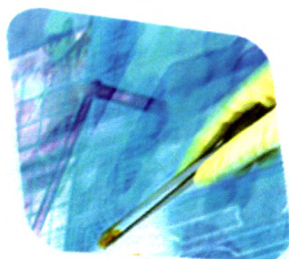
● 中国期刊全文数据库收录期刊

● 中国核心期刊(遴选)数据库收录期刊

● 中文科技期刊数据库全文收录期刊

广东畜牧兽医科技

GUANGDONG JOURNAL OF ANIMAL AND VETERINARY SCIENCE



2013.02 第38卷 (总第168期)

广东省畜牧兽医学会 广东省农业科学院畜牧研究所 广东省农业科学院兽医研究所 主办

广东温氏食品集团股份有限公司 广东永顺生物制药股份有限公司

广东省动物防疫物资储备中心 广东大华农动物保健品股份有限公司 协办

广州旭牧生物科技有限公司 广州市皓博仪器仪表有限公司 新丰板岭原种猪场

ISSN 1005-8567



04 >

9 771005 856008

万方数据

GUANGDONG JOURNAL OF ANIMAL AND VETERINARY SCIENCE

Established in march 1976(Bimonthly)

Apr.2013 Volume 38, Number 2 (Total No.168)

Main Content

- Influence of mating in different seasons on reproductive performance of Large Yorkshire sows*
.....Chen Shaomeng,Wei Zhenyi, et al(1)
- Effects of Chitosan on the performance in Rex Rabbit* Zhang Yaping(6)
- Phylogenetic analysis of a Newcastle disease virus strain isolated from Guangdong*.....
.....Jia Weixin, Xie Shumin(9)
- Cloning and expression of antigen epitopes of spike protein of porcine epidemic diarrhea virus*
.....Xiao Jianxiong,Tang Zhiling,et al (17)
- The GICA method for detection of porcine Japanese B encephalitis antibody*.....
.....Tian Chunjian, Jia Kun, et al(21)
- Breeding of Laiwu pig by handmade cloning*Zhou Rong,Zhou Xiu,et al(26)
- Real-time RT-PCR method for detection of canine distemper virus and application*
.....Yu Shaohua, Luo Manlin,et al(35)
- Analysis of Canine Eperythrozoonosis Cases*.....Xie Jinfu, Zhang Yang(40)
- A comprehensive teaching system of veterinary microbiology and immunology experiment*
.....Luo Yongwen, Guo Huixia,et al (44)
- Outlook of pig industry in China*.....Wang Mingfu(48)
- Animal welfare of experimental animals used in production of veterinary bio-agents*
.....Pan Weilan,Huang Liping, et al(51)



Sponsored by: Guangdong Association of Animal Husbandry
and Veterinary Medicine, Institute of Animal
Science and Institute of Veterinary Medicine,
Guangdong Academy of Agricultural Sciences

Published by: Editor Office Guangdong Journal of Animal
and Veterinary Science.

Chief Editor: JIANG Zongyong

Vice Chief Editor: SUN Yanwei

Editor Add: 135 Xianlie Dong Lu, Guangzhou P.R. China

Post Code: 510500

Tel: (020)37245052 37288167

Fax: (020)37245052

E-mail: gdxmsy@163.com gdxmsykj@163.com

