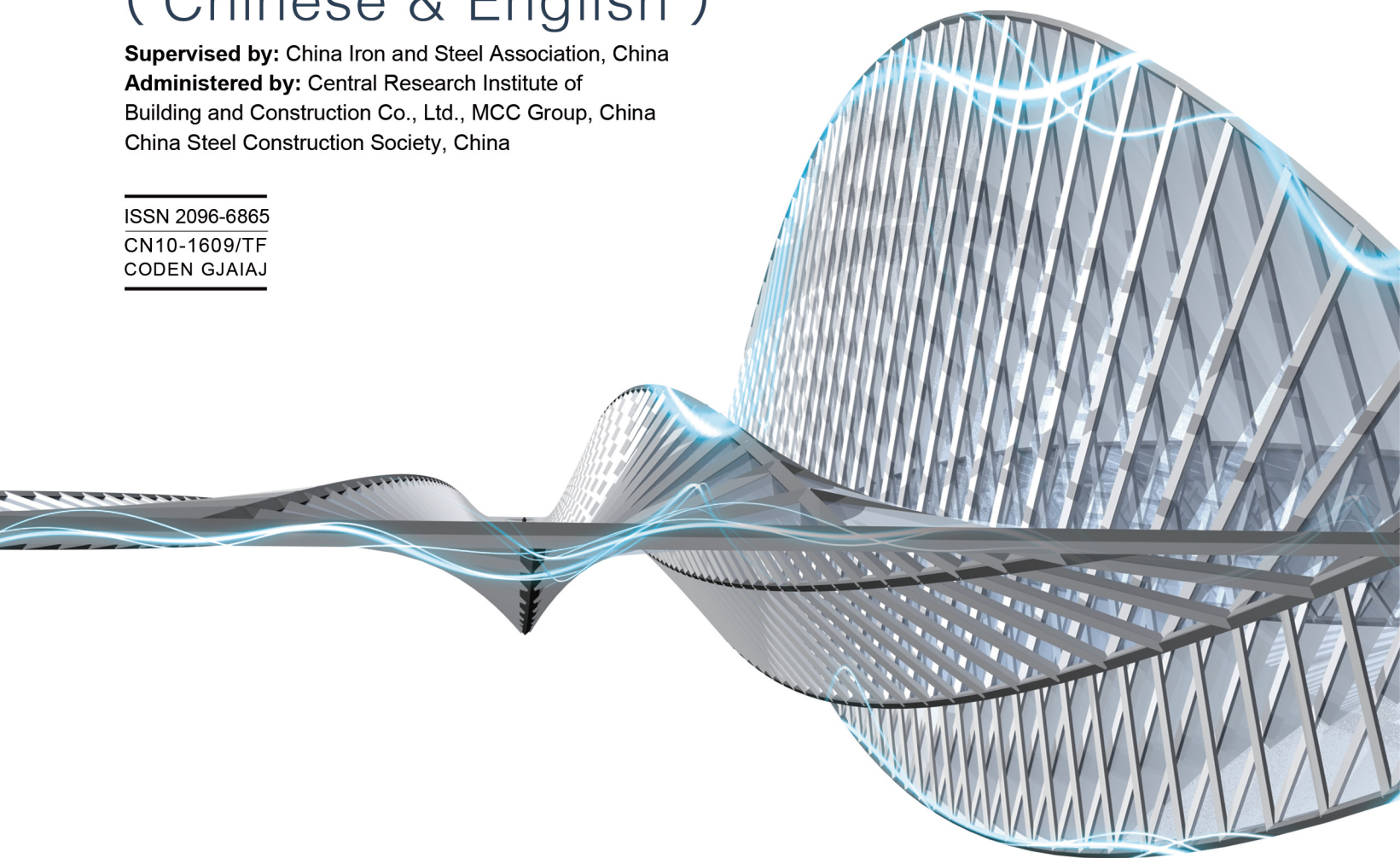


Steel construction

(Chinese & English)

Supervised by: China Iron and Steel Association, China
Administered by: Central Research Institute of
Building and Construction Co., Ltd., MCC Group, China
China Steel Construction Society, China

ISSN 2096-6865
CN10-1609/TF
CODEN GJAI AJ



2020.8
Vol.35 Total No.260

钢结构 (中英文)

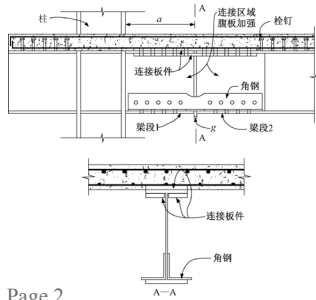
目录 Contents

科研

Research

- 1 配置可更换角钢连接构造的钢框架试验研究
陈以一 贺修樟

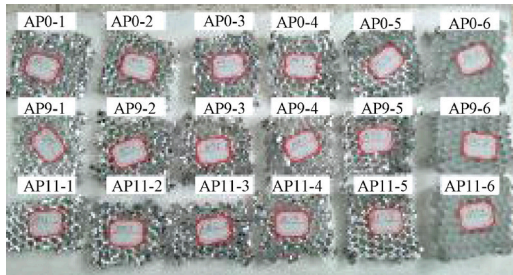
Tests on Moment Resistant Frame Connection with Replaceable Angles
Yiyi Chen Xiuzhang He



Page 2

- 17 太子城站钛锌蜂窝板芯层结构高温加速老化试验研究
蒋鸿鹄 蒋洁菲 张 骞 蔡建国

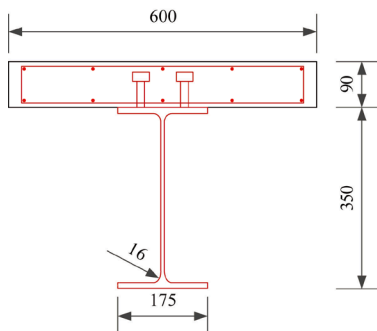
Experimental Study on High Temperature Accelerated Aging of Titanium-Zinc Honeycomb Core in Taizicheng Railway Station
Honghu Jiang Jiefei Jiang
Qian Zhang Jianguo Cai



Page 20

- 24 基于塑性损伤模型的钢-UHPC 组合梁抗弯性能分析
朱经纬 辛公锋 徐传昶 张 恒 王 越

Analysis of Flexural Behavior of Steel-UHPC Composite Girders Based on Plastic Damage Model
Jingwei Zhu Gongfeng Xin Chuanchang Xu
Heng Zhang Yue Wang



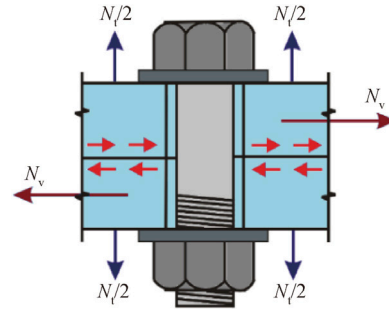
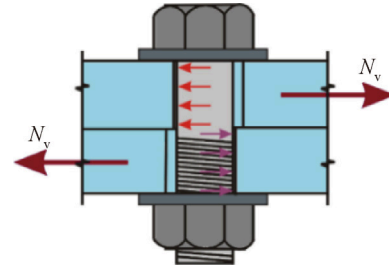
Page 26

中美钢结构规范对比研究

Comparison of Chinese and US Code

- 33 中美建筑钢结构设计方法比较——螺栓连接
石永久

Comparisons Between Chinese and American Standards on Bolted Connection Design
Yongjiu Shi

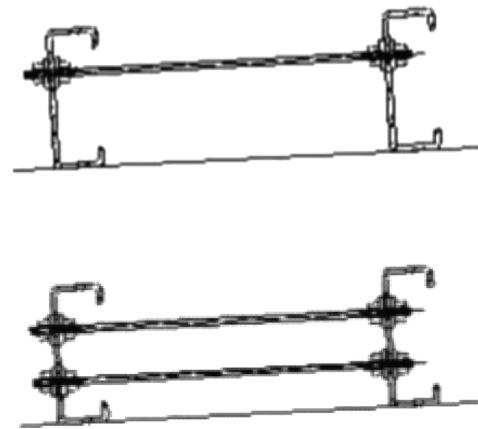


Page 34

钢结构热点探析

Hot Spot Analysis of Steel Structures

- 57 拉条怎样才能同时约束檩条上、下翼缘？



Page 57