

原《国际病理科学与临床杂志》



# 临床与病理杂志

Journal of Clinical and Pathological Research

2023年5月 第43卷 第5期

Volume 43, Number 5 May 2023

新  
不  
可  
新  
理  
理  
理  
理

二  
〇  
二  
三  
年

第  
四  
十  
三  
卷

第  
五  
期

中  
南  
大  
学



中南大学出版社  
www.csupress.com.cn

# 临床与病理杂志

LINCHUANG YU BINGLI ZAZHI

1981年创刊

月刊

第43卷第5期

2023年5月出版

## 主管

中华人民共和国教育部

## 主办

中南大学

## 编辑

《临床与病理杂志》编辑部  
长沙市湘雅路110号中南大学湘雅  
医学院75号信箱  
邮编: 410078  
Email: lcbl-xy@csu.edu.cn  
gwyxxy@126.com  
网址: <http://lcbl.csu.edu.cn>

## 出版

中南大学出版社责任有限公司

## 主编

周胜华 季加孚

## 印刷

湖南鑫成印刷有限公司

## 发行

国内: 湖南省报刊发行局  
国外: 中国国际图书贸易总公司  
(北京 399 信箱, 100044)

## 邮发代号

国内: 42-35  
国外: BM6564

## 国内定价

每期 60.00 元 (全年 720.00 元)

## 广告经营许可证号

4301004000077

## 中国标准连续出版物号

ISSN 2095-6959  
CN 43-1521/R

## 2023年版权归本刊所有

如有印刷装订质量问题, 请向本刊调换。

## 目次

### 论著

- 849 **Securin** 对神经胶质瘤细胞系 U251 迁移、侵袭以及上皮-间充质转化的影响  
王薇, 窦佳, 李超, 刘淑娟, 闫海成
- 857 高压氧联合亚硒酸钠通过上调 **c-Jun**/自噬信号通路抑制肝癌细胞增殖活性  
史敬东, 刘亚玲, 于秋红, 段斌炜
- 865 干扰 **CNPY2** 表达对非小细胞肺癌细胞增殖、周期和凋亡的影响  
窦郁, 马娟
- 873 **SMARCA4** 缺失的非小细胞肺癌的临床病理特征  
赵艳, 练亿香, 朱德茂, 罗海军, 申月明
- 880 细支气管腺瘤 24 例临床病理分析  
王应霞, 田扬, 赵雯, 张旋
- 888 **COVID-19** 患者外周血单个核细胞 **lncRNA** 相关 **ceRNA** 调控网络的生物信息学分析  
尤红俊, 任淑婷, 董梦雅
- 900 **IL-17A** 基因 **rs8193037** 和 **rs8193038** 位点多态性与川崎病的关联性  
庄晓琪, 刘欣, 胡爽, 胡娅南, 贺勤, 李卓颖, 杨作成
- 907 血清肌钙蛋白 **I** 水平升高对足月新生儿心肌损伤的诊断效果  
赵芳, 吴龙艳, 林玲
- 914 孕早期胎儿颈项透明层增厚与胎儿预后的关系  
黄君红, 卢瑾文, 徐慧敏, 战欣, 卢丹
- 920 口呼吸儿童咽腔结构及牙颌面形态的三维分析  
王宏伟, 李会娜, 郭乔智, 马红芬, 赵英勉, 王晓雪, 尹会苏

本期责任编辑 彭敏宁、陈丽文、郭征、傅希文、田朴、宋柳、平静波

- 928 CT对肺部磨玻璃结节各病理类型肺腺癌的鉴别价值  
宋巾, 朱曙光, 朱浩雨, 刘啸峰
- 936 内轴型与后稳定型假体对膝骨性关节炎患者置换术后恢复和并发症发生风险的影响  
高振华, 钱军, 邹永刚, 李旭伟
- 944 “桥式”固定法与“蝶式”固定法对减少动静脉内瘘血管损伤的效果比较  
黄路路, 崔益鸿, 徐慧
- 951 2型糖尿病患者心血管疾病的危险因素与血清羧化不全骨钙素水平的相关性  
赵春楠, 耿学丽, 张泽智, 赵维川, 朴宗方, 付珊
- 958 老年2型糖尿病合并亚临床甲状腺功能减退患者的临床特点  
黄婷婷
- 965 老年脑卒中伴抑郁患者使用草酸艾司西酞普兰联合康复训练治疗的效果  
王多多, 陈敏, 李扬
- 972 入院时中性粒细胞与淋巴细胞比值对高血压脑出血患者近期预后的预测价值  
何黎丹, 胡茜, 路伟, 朱燕
- 978 神经外科手术患者术中压力性损伤风险预测模型的构建及验证  
马娜, 刘莉莉, 王伟杰
- 985 食管癌患者术后发生急性肾损伤的危险因素及对策  
葛华林, 王旗
- 990 术前预康复在腹腔镜胃癌根治术中的应用  
周红, 陈茹雪, 付丹凤, 朱志强, 陈霞
- 996 乳腺癌患者乐商、幸福感、心理弹性对平静心境影响的路径分析  
张维霞, 赵赢, 公莲花, 晋铭
- 1004 拼贴画心理疗法应用于青年乳腺癌患者癌症复发恐惧干预中的效果  
贺静, 赵小娟, 徐锦
- 1011 基于授权理论的干预模式在肝癌术后患者护理中的应用  
吴梅, 顾丽丽, 杨艳, 卫培忠
- 1019 4R危机管理理论干预对精神病合并肺结核患者日常生活能力、用药依从性的影响  
朱安滢
- 1026 递进式健康教育对骨质疏松性腰椎压缩性骨折行椎体成形术患者骨质疏松知信行的影响  
唐冰尔, 张琳, 李洁
- 1033 基于Caprini风险评估模型的个性化预防护理对老年髌部骨折术后患者下肢深静脉血栓形成的影响  
贾英琪, 张莹莹

## 综 述

1041 骨质疏松性椎体压缩骨折经皮椎体成形术后再发骨折预防措施研究进展

张坤, 王敏, 龙海涛, 易伟宏, 杨大志

1051 疱疹性咽峡炎从湿热论治的临床研究进展

胡坤敏, 程芳, 朱珊

## 临床病例讨论

1057 膀胱尿路上皮癌吡柔比星灌注化学疗法后的第2肿瘤1例

邹玉婷, 朱斯瑶, 卢义晨, 曾福仁

本刊参加期刊编校无差错承诺活动

---

[期刊基本参数] CN43-1521/R\*1981\*m\*A4\*214\*zh\*P\*¥60.00\*400\*29\*2023-05

# JOURNAL OF CLINICAL AND PATHOLOGICAL RESEARCH

Monthly      Established in 1981

Volume 43    Number 5    May 2023

## Responsible Institution

Ministry of Education  
P. R. China

## Sponsor

Central South University

## Editor-in-Chief

ZHOU Shenghua  
JI Jiafu

## Editing

Editorial Office of *Journal of Clinical and Pathological Research*

P. O. Box 75  
110 Xiangya Road  
Xiangya School of Medicine  
Changsha Hunan 410078  
P. R. China

## Publication

Central South University Press Co., Ltd.

## Printer

Hunan Xincheng Printing Co., Ltd.

## Distributor

Domestic: Local Post Office  
Overseas: China International Book Trading Corporation  
(P. O. Box 399, Beijing, China)

## Mail-Order

Editorial Office of *Journal of Clinical and Pathological Research*

## Price

China ¥ 720/year

## CSSN

ISSN 2095-6959  
CN 43-1521/R

## CONTENTS

### Articles

- 849**    **Effects of securin on the migration, invasion, and epithelial mesenchymal transformation of glioma cell line U251**  
*WANG Wei, DOU Jia, LI Chao, LIU Shujuan, YAN Haicheng*
- 857**    **Hyperbaric oxygen combined with silica nanoparticles inhibits hepatocellular carcinoma cells by increasing c-Jun/autophagy axis**  
*SHI Jingdong, LIU Yaling, YU Qihong, DUAN Binwei*
- 865**    **Effect of interfering with CNPY2 expression on proliferation, cycle, and apoptosis of non-small cell lung cancer cells**  
*DOU Yu, MA Xian*
- 873**    **Clinicopathological features of SMARCA4-deficient non-small cell lung cancer**  
*ZHAO Yan, LIAN Yixiang, ZHU Demao, LUO Haijun, SHEN Yueming*
- 880**    **Clinicopathological analysis of 24 cases of bronchiolar adenoma**  
*WANG Yingxia, TIAN Yang, ZHAO Wen, ZHANG Xuan*
- 888**    **Bioinformatics analysis of lncRNA-related ceRNA regulatory network in peripheral blood mononuclear cells of patients with COVID-19**  
*YOU Hongjun, REN Shuting, DONG Mengya*
- 900**    **Association between loci rs8193037 and rs8193038 of IL-17A gene polymorphism and Kawasaki disease**  
*ZHUANG Xiaoqi, LIU Xin, HU Shuang, HU Yanan, HE Qin, LI Zhuoying, YANG Zuocheng*
- 907**    **Diagnostic effect of elevated cardiac troponin I level on myocardial injury in term neonates**  
*ZHAO Fang, WU Longyan, LIN Ling*
- 914**    **Relationship between the thickening of fetal nuchal translucency in first trimester and fetal prognosis**  
*HUANG Junhong, LU Jinwen, XU Huimin, ZHAN Xin, LU Dan*
- 920**    **Three-dimensional analysis of pharyngeal and dentofacial morphology in children with mouth-breathing**  
*WANG Hongwei, LI Huina, GUO Qiaozhi, MA Hongfen, ZHAO Yingmian, WANG Xiaoxue, YIN Huisu*

- 928 Diagnostic value of CT for pulmonary adenocarcinoma of different pathologic types in grinding glass nodule**  
*SONG Jin, ZHU Shuguang, ZHU Haoyu, LIU Xiaofeng*
- 936 Effects of medial-axis prosthesis and posterior-stabilized prosthesis on postoperative recovery and risk of complications in patients with knee osteoarthritis**  
*GAO Zhenhua, QIAN Jun, ZOU Yonggang, LI Xuwei*
- 944 Comparison of the effects of “bridge type” fixation and “butterfly type” fixation on reducing vascular injury of arteriovenous fistula**  
*HUANG Lulu, CUI Yihong, XU Hui*
- 951 Correlation between risk factors of cardiovascular disease and serum undercarboxylated osteocalcin level in patients with type 2 diabetic mellitus**  
*ZHAO Chunnan, GENG Xueli, ZHANG Zezhi, ZHAO Weichuan, PIAO Zongfang, FU Shan*
- 958 Clinical characteristics in elderly patients with type 2 diabetes mellitus complicated with subclinical hypothyroidism**  
*HUANG Tingting*
- 965 Effect of escitalopram oxalate combined with rehabilitation training in elderly stroke patients with depression**  
*WANG Duoduo, CHEN Min, LI Yang*
- 972 Predictive value of neutrophil-to-lymphocyte ratio on admission on the short-term prognosis of patients with hypertensive intracerebral hemorrhage**  
*HE Lidan, HU Qian, LU Wei, ZHU Yan*
- 978 Establishment and validation of a risk prediction model for intraoperative pressure injury in patients undergoing neurosurgery**  
*MA Na, LIU Lili, WANG Weijie*
- 985 Risk factors and countermeasures of postoperative acute renal injury in patients with esophageal cancer**  
*GE Hualin, WANG Qi*
- 990 Application of preoperative prehabilitation in laparoscopic radical gastrectomy for gastric cancer**  
*ZHOU Hong, CHEN Ruxue, FU Danfeng, ZHU Zhiqiang, CHEN Xia*
- 996 Path analysis of influence of optimistic intelligence quotient, happiness, and resilience to inner peace in breast cancer patients**  
*ZHANG Weixia, ZHAO Ying, GONG Lianhua, JIN Ming*
- 1004 Effect of collage psychotherapy on the intervention of cancer recurrence fear in young breast cancer patients**  
*HE Jing, ZHAO Xiaojuan, XU Jin*
- 1011 Application of empowerment theory-based intervention model in postoperative nursing of patients with liver cancer**  
*WU Mei, GU Lili, YANG Yan, WEI Peizhong*
- 1019 Effect of 4R crisis management theory intervention on daily living ability and medication compliance in patients with psychosis complicated with pulmonary tuberculosis**  
*ZHU Anying*

**1026 Effect of progressive health education on knowledge, belief, and practice of osteoporosis in vertebroplasty patients with osteoporotic lumbar compression fracture**  
*TANG Bing'er, ZHANG Lin, LI Jie*

**1033 Effect of personalized preventive nursing based on Caprini risk assessment model on lower extremity deep venous thrombosis in elderly patients after hip fracture surgery**  
*JIA Yingqi, ZHANG Yingying*

## **Reviews**

**1041 Progress on preventive measures of recurrent fractures after percutaneous vertebroplasty for osteoporotic vertebral compression fracture**  
*ZHANG Kun, WANG Min, LONG Haitao, YI Weihong, YANG Dazhi*

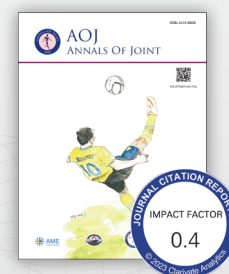
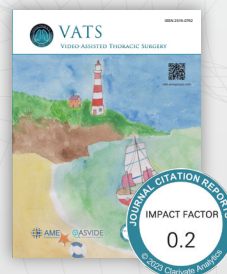
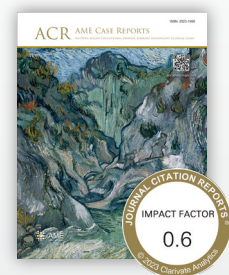
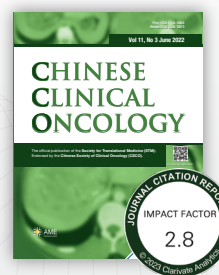
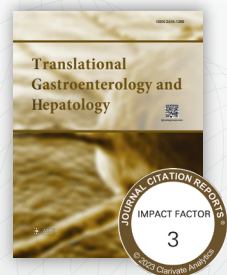
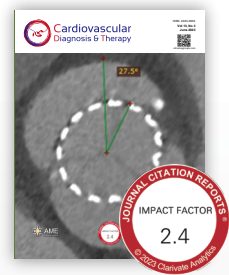
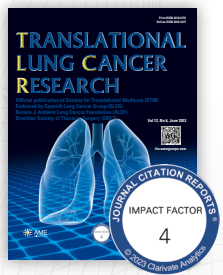
**1051 Clinical research progress in dampness-heat for treating herpangina**  
*HU Kunmin, CHENG Fang, ZHU Shan*

## **Case Report**

**1057 Second primary malignancy after pirubicin instillation chemotherapy for urothelial carcinoma of the bladder: A case report**  
*ZOU Yuting, ZHU Siyao, LU Yichen, ZENG Furen*

# AME Medical Journals

Founded in 2009, AME has been rapidly entering into the international market by embracing the highest editorial standards and cutting-edge publishing technologies. Till now, AME has published more than 60 peer-reviewed journals (11 indexed in Web of Science/SCIE, 7 indexed in Web of Science/ESCI and 20 indexed in PubMed), predominantly in English (some are translated into Chinese), covering various fields of medicine including oncology, pulmonology, cardiothoracic disease, andrology, urology and so forth (updated on June 2023).



**AME**  
Publishing Company

Academic Made Easy, Excellent and Enthusiastic  
破窗千里目、快乐搞学术