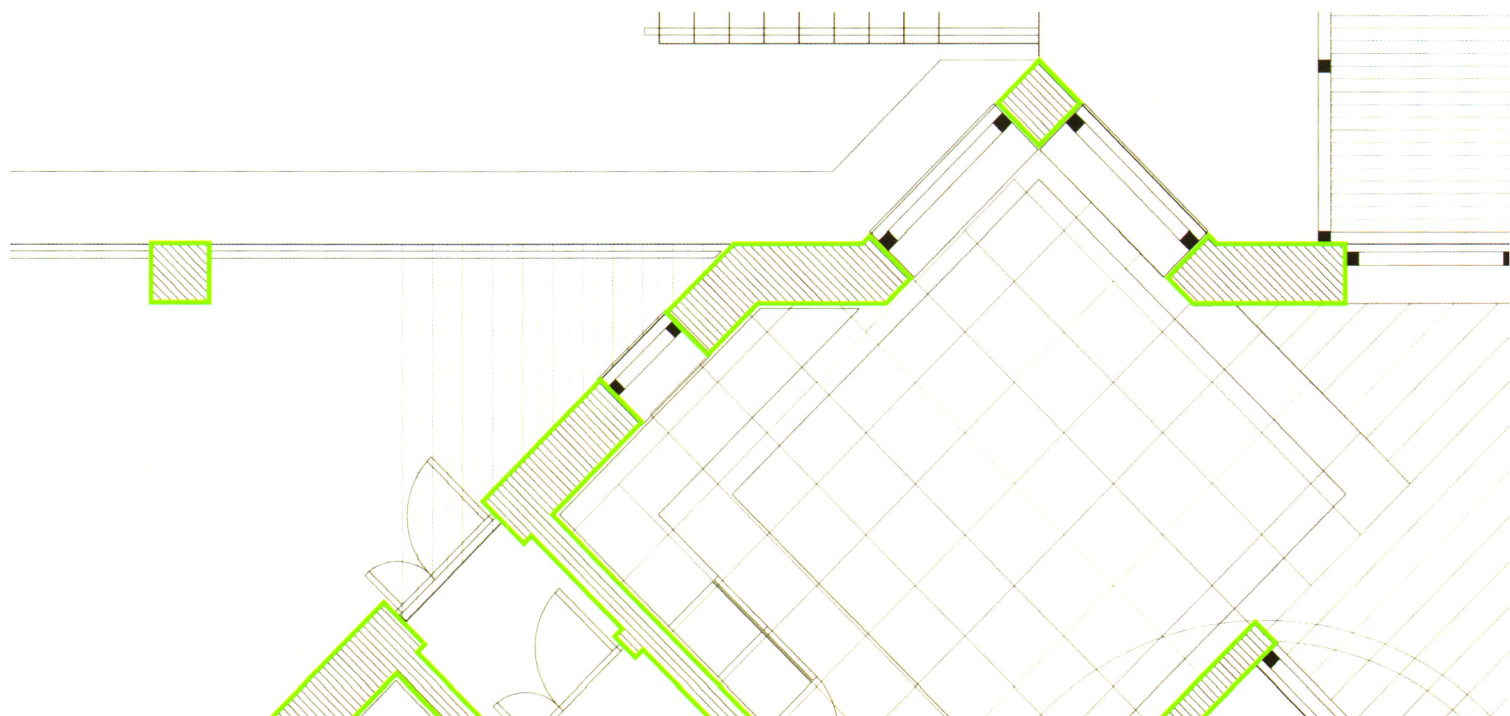


# 工业建筑



Industrial Construction

中文核心期刊 主办：中冶建筑研究总院有限公司



北方空间  
NORTH SPACE

2013.2

43卷 | 第479期

# Industrial Construction

## 钢筋混凝土结构抗震性能研究

- |  |                |
|--|----------------|
| 1 带端柱高性能混凝土剪力墙的抗震性能                      | 崔晓玲 梁兴文 杨鹏辉    |
| 9 高强箍筋约束高强混凝土柱的抗轴压性能                     | 杨坤 史庆轩 赵均海, 等  |
| 14 带缝填充墙框架结构抗震性能试验研究                     | 李艳艳 陈艳凤 韩红霞, 等 |
| 18 高层建筑地震反应的分散最优迭代学习控制研究                 | 汪权 庄嘉雷 王建国, 等  |
| 24 钢筋混凝土剪力墙性能指标限值研究                      | 李坤 史庆轩         |
| 29 连体的连接方式对大底盘双塔连体耗能减震结构地震响应的影响          | 杨佑发 刘泳伶 凌玲, 等  |
| 34 动力参数对核筒悬挂隔震结构减震效果影响                   | 魏晓刚 刘书贤 麻凤海, 等 |
| 39 砌体结构地震破坏程度的估计研究                       | 苏启旺 刘成清 赵世春    |
| 45 预应力钢带加固钢筋混凝土柱抗震性能试验研究                 | 杨勇 赵飞 刘义, 等    |
| 49 地震损伤钢筋混凝土结构修复加固方法试验研究                 | 倪国葳 常好涌 姜忻良    |
| 55 西峰工业集中区生态空间环境营造                       | 李鸿飞 戴海雁 刘奔腾, 等 |
| 59 工业景观设计中的视觉艺术                          | 梁竞云            |
| 61 真空联合堆载预压加固覆盖层深厚软土地基研究                 | 唐彤芝 张红 岳斌, 等   |
| 67 格型地下连续墙工作性状的离心模型试验研究                  | 陈希 徐伟 左玉柱      |
| 72 基于极限平衡法与极限分析法等效性的地基承载力系数 $N_c$ 的上限解   | 杨扬 卢坤林 朱大勇, 等  |
| 78 基于经济安全系数比的隧道穿越超浅埋大偏压段方案优化研究           | 钟祖良 刘新荣 方金炳, 等 |
| 83 基于隧道设计规范静土压力计算假设基础上的地震土压力拟静力计算法       | 邓通发 罗嗣海 聂复生    |
| 88 混凝土浇筑过程中高支模力学响应的全程分析                  | 胡长明 汪杰 李家涛, 等  |
| 94 多层模版支撑体系受力实测及有限元分析                    | 林璋璋 张奕 杨俊杰     |
| 99 海水环境下碳纤维增强复合材料加固预损伤钢筋混凝土梁抗弯性能试验研究     | 王玉田 张维 姜福香     |
| 104 钢纤维在梁截面的分布及其对混凝土梁弯曲韧性的影响             | 范树华 覃霜 丁一宁     |
| 110 受剪状态下玄武岩纤维增强复合材料 L 型与 U 型箍筋抗拉强度的试验对比 | 叶泳 江世永 飞渭, 等   |
| 113 盐冻作用下钢渣矿渣混凝土的渗透性能                    | 王阵地 姚燕 王玲, 等   |

## 现代钢结构

- |                            |               |
|----------------------------|---------------|
| 117 半球形干煤棚表面风荷载与干扰效应数值风洞研究 | 朱银银 樊友川 王旭, 等 |
| 121 带开孔损伤钢管混凝土轴压性能试验研究     | 陈宗平 钟铭 陈宇良    |
| 128 横梁加强型人字撑结构的弹塑性滞回性能     | 罗贵发 张磊 童根树    |
| 134 某大型钢厂端部拔柱吊车梁系统设计       | 陈加伟 但泽义 林红    |

## 工程建设技术标准动态

- |                         |     |
|-------------------------|-----|
| 138 中美风荷载规范在电站锅炉钢结构上的应用 | 孙洪鹏 |
|-------------------------|-----|

## 鉴定·加固·改造

- |                        |           |
|------------------------|-----------|
| 143 基于振动传递率的损伤识别仿真研究   | 韦灼彬 吴森 张宁 |
| 148 风机基础分层事故的检测鉴定及加固处理 | 席向东 易桂香   |

## 工程事故分析

- |                      |            |
|----------------------|------------|
| 153 渡桥电厂冷却塔风毁事故介绍与分析 | 张军锋 葛耀君 赵林 |
| 159 早拆混凝土后浇带底模的教训    | 王祥 张飞林 肖南  |

## 工程实录

- |                       |         |
|-----------------------|---------|
| 164 邯郸钢渣山公园景观规划设计     | 董杰 邹丹   |
| 168 某工业厂房“适应性再利用”设计研究 | 孙昌玲 王志远 |

## 建筑设计漫谈

- |                   |     |
|-------------------|-----|
| 172 “嘉庚建筑”百年之际创新高 | 庄丽娥 |
|-------------------|-----|

## 世界文化遗产名录中的工业遗产

刘伯英

- 1 Seismic Behavior of High Performance Concrete Shear Wall with end Columns Cui Xiaoling Liang Xingwen Yang Penghui
- 9 Axial Compression Performance of High-Strength Concrete Columns Confined by High-Strength Stirrups Yang Kun Shi Qingxuan Zhao Junhai, et al
- 14 Experimental Study on Seismic Behavior of Infilled Frame Structures with Slit Li Yanyan Chen Yanfeng Han Hongxia, et al
- 18 Decentralized Optimal Iterative Learning Control of Seismic Response of Tall Buildings Wang Quan Zhuang Jialei Wang Jianguo, et al
- 24 Research on Performance Index Limit Value of Reinforced Concrete Shear Wall Li Kun Shi Qingxuan
- 29 Influence of Different Connecting Methods on the Seismic Dissipation of Two-Tower-Connected High-Rise Building with Enlarged Base Yang Youfa Liu Yongling Ling Ling, et al
- 34 The Impact Analysis of Vibration-Suppressed Effectiveness of Core-Wall Suspension Isolation Structure Caused by Dynamic Parameter Wei Xiaogang Liu Shuxian Ma Fenghai, et al
- 39 The Estimate Research on Seismic Damage Degree of Masonry Building Su Qiwang Liu Chengqing Zhao Shichun
- 45 Experimental Study on Reinforced Concrete Column Retrofitted by Prestressed Steel Strips Yang Yong Zhao Fei Liu Yi, et al
- 49 Reinforcement and Repair Method of Earthquake Damaged Concrete Structures Ni Guowei Chang Haosong Jiang Xinliang Li Hongfei Dai Haiyan Liu Benteng, et al
- 55 Construction of Ecological Environment in Xifeng Industrial Park Li Hongfei Dai Haiyan Liu Benteng, et al
- 59 The Visual Arts in the Design of Industrial Landscape Liang Jingyun
- 61 Study on Improving Thick Soft Soil Ground Below Overburden by Vacuum Combined Surcharge Preloading Tang Tongzhi Zhang Hong Yue Bin, et al
- 67 Centrifugal Model Tests on Mechanical Property of Cellular Diaphragm Wall Chen Xi Xu Wei Zuo Yuzhuo
- 72 The Upper Bound Solution for Bearing Capacity Factor of by Employing the Equivalence of Limit Analysis and Limit Equilibrium Method Yang Yang Lu Kunlin Zhu Dayong, et al
- 78 Optimization Research on Tunnel Crossing Scheme Through Ultra-Shallow and Large Bias Sections Based on Economic Safety Coefficient Ratio Zhong Zuliang Liu Xinrong Fang Jinbing, et al
- 83 The Quasi-Static Method of the Seismic Soil Pressure Calculation Based on the Static Earth Pressure Assumptions in the Code for Design of Tunnel Deng Tongfa Luo Sihai Nie Fusheng
- 88 The Full Analysis of High Support System for Formwork During the Construct of the Roof Hu Changming Wang Jie Li Jiatao, et al
- 94 Analysis of Multi-Story Formwork Supporting System by Detection and Fem Lin Zhangzhang Zhang Yi Yang Junjie
- 99 Experiment on the Bending Performance of CFRP Reinforced PRE-Damaged Reinforced Concrete Beam Under Seawater Environment Wang Yutian Zhang Wei Jiang Fuxiang
- 104 Steel Fiber Distribution and Its Effect on the Toughness of Steel Fiber Concrete Beams Fan Shuhua Qin Shuang Ding Yining
- 110 Comparison Between Tensile Strength Test Methods of L-Type and U-Type BFRP Stirrups under the Shear State Ye Yong Jiang Shiyong Fei Wei, et al
- 113 Permeability of Steel Slag and Blast Furnace Slag Concrete Exposed to Salt Frost Wang Zhendi Yao Yan Wang Ling, et al
- 117 CFD Study on Wind Loads and Interference Effects of Hemispherical Large-Span Dry-Coal-Sheds Zhu Yinyin Fan Youchuan Wang Xu, et al
- 121 Experimental Study on Mechanical Properties of Concrete-Filled Opening Hole Damaged Steel Tubular Members Chen Zongping Zhong Ming Chen Yuliang Luo Guifa Zhang Lei Tong Genshu
- 128 Hysteretic Behavior of Chevron Brace Pairs with Strong Beam Luo Guifa Zhang Lei Tong Genshu
- 134 The Design of Crane Beam System with Column Removed in a Large Steel Factory Chen Jiawei Dan Zeyi Lin Hong
- 138 Application of the Chinese and American Codes in Design of Bdlir Steel Structures for Electric Power Station Sun Hongpeng
- 143 Simulation Experiment Study on a Cantilever Beam Based on Transmissibility Wei Zhuobing Wu Sen Zhang Ning
- 148 Inspection and Reinforcement of Wind Turbine Foundations with Stratification Xi Xiangdong Yi Guixiang
- 153 Introductions and Analyses of Collapse of Cooling Tower for Ferrybridge Power Station Zhang Junfeng Ge Yaojun Zhao Lin
- 159 Lessons of Removing Formwork Ahead of Time under the Construction of Post-Cast Strip in RC Structures Wang Xiang Zhang Feilin Xiao Nan
- 164 The Landscape Planning and Design of Steel Slag Mountain Park in Handan Dong Jie Zou Dan
- 168 The Example About the Adaptive Reuse of an Industrial Plant Sun Changling Wang Zhiyuan
- 172 Study on the New Peak of "Jiangeng Building" at a Century Zhuang Lie
- 175 Industrial Heritage in the World Heritage List Liu Boying