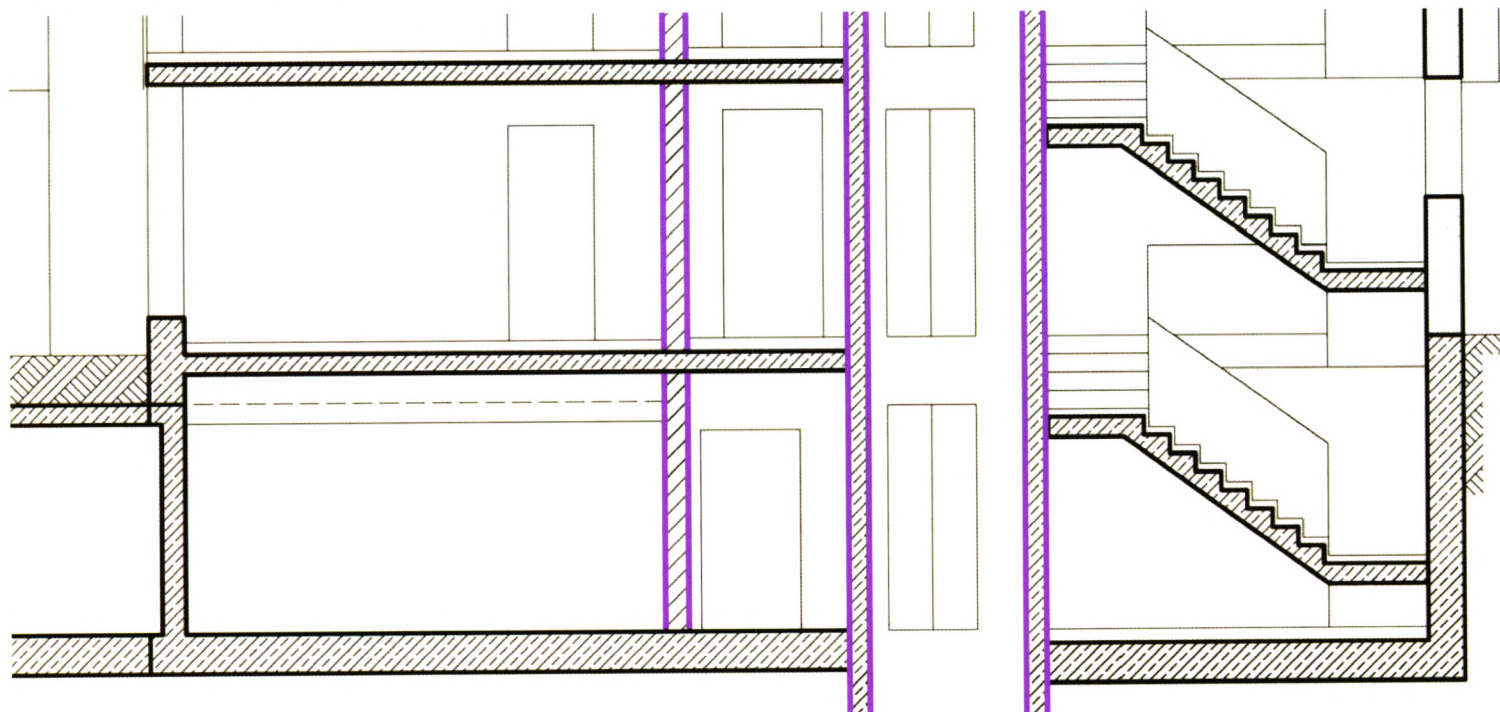


工业建筑



Industrial Construction

中文核心期刊 主办：中冶建筑研究总院有限公司



湖南韶峰钢结构有限公司
HUNAN SHAOFENG STEEL STRUCTURE CO.,LTD.

2013.3

43卷 | 第480期

Industrial Construction

钢管高性能混凝土构件的静力性能研究

- | | |
|--------------------------------------------|----------------|
| 1 钢管高性能混凝土轴压短柱的静力性能(I): 试验研究及有限元模拟 | 王庆利 侯婷婷 李庆刚, 等 |
| 8 钢管高性能混凝土轴压短柱的静力性能(II): 机理分析及承载力 | 王庆利 李瑞霖 李庆刚, 等 |
| 13 钢管高性能混凝土受弯构件的静力性能(I): 试验研究及有限元模拟 | 王庆利 刘晓晨 李庆刚, 等 |
| 18 钢管高性能混凝土受弯构件的静力性能(II): 机理分析及承载力 | 王庆利 吴军 李庆刚, 等 |
| 24 钢管高性能混凝土压弯构件的静力性能(I): 试验研究及有限元模拟 | 尹晓东 李庆刚 王庆利 |
| 30 钢管高性能混凝土压弯构件的静力性能(II): 机理分析及承载力 | 尹晓东 李庆刚 王庆利 |
| | |
| 36 工业遗产再利用背景下的文化创意产业园规划研究 | 谢涤湘 陈惠琪 邓雅雯 |
| 40 三旧改造背景下转型升级企业园区更新规划及建筑设计研究 | 朱雪梅 江海燕 谢涤湘, 等 |
| 44 城市设计视角下建筑顶部形态的设计控制研究 | 张 冕 洪再生 李晚娟, 等 |
| 48 国内外种植屋面节能研究比较分析 | 宁 菽 高 辉 张振元 |
| 52 复合式金属型阻尼器的试验研究及数值仿真分析 | 许维炳 闫维明 陈彦江, 等 |
| 57 近场地震水平及竖向反应谱及设计谱 | 尹 攀 胡其高 李 鹏 |
| 61 新型混凝土复合保温砌块承重墙抗震性能试验研究 | 徐 明 彭 翥 陈忠范 |
| 67 层数和层对高层建筑剪力墙数量的影响 | 胡孔鹏 陈道政 |
| 71 土的颗粒组成对电阻率的影响试验研究 | 查甫生 刘松玉 杜延军, 等 |
| 75 考虑温度应力的深厚表土层井壁破裂分析 | 何朋立 |
| 79 基于应变空间弹塑性本构模型的FLAC ^{3D} 二次开发研究 | 张华宾 王芝银 冉莉娜 |
| 84 掺玄武岩纤维对钢筋与混凝土黏结性能的影响 | 胡芯国 朱 涵 |
| 88 海工自密实高性能混凝土绝热温升试验研究 | 王成启 庄 骅 张悦然, 等 |
| 93 乌鲁木齐地区C30自密实混凝土配合比的正交试验研究 | 陈 波 刘 清 何原野 |
| 97 基于位移反分析理论的扣件式钢管支架节点刚度整架试验研究 | 陈安英 郭正兴 |
| 103 建筑物滑动迁移中托架的优化分析 | 洪 鹰 王云川 |

现代钢结构

- | | |
|-----------------------------|----------------|
| 108 钢结构高强度螺栓与侧焊缝并用连接建议设计方法 | 石永久 王 磊 王元清, 等 |
| 113 新型薄壁方钢管梁柱节点试验研究及影响参数分析 | 徐 斌 姚 勇 邓勇军, 等 |
| 120 巨型钢框架-拉索支撑体系的Pushover分析 | 唐柏鉴 彭小龙 邵建华 |

鉴定·加固·改造

- | | |
|--------------------------|----------------|
| 125 单面格构式钢板加固砖砌体墙试验研究 | 张广泰 于孝军 |
| 129 某小学教学楼的屈曲约束支撑抗震加固设计 | 高 鹏 叶献国 徐 勤 |
| 133 某钢厂300t转炉高层框架系统的加固设计 | 李茂新 张号军 石志龙, 等 |
| 138 某皮带运输通廊钢桁架结构检测和加固处理 | 杨 珏 郑七振 韩明飞 |

工程实录

- | | |
|-------------------------|---------|
| 142 某大底盘超高层建筑基础设计 | 王 超 罗晓勇 |
| 147 汽车制造厂多功能空间连廊结构分析与设计 | 邱 鹏 |

建筑设计漫谈

- | | |
|---------------------------------|---------|
| 153 工业建筑的艺术化表达——广州市粮食储备加工中心项目设计 | 王祖远 郭婵姣 |
| 156 文化·文脉——永昌县文化中心规划建筑设计方案 | 陈 聪 刘 涛 |

- 1 Static Performance of the High-Performance Concrete Filled Steel Tubular Stub Column (I) :
Experimental Study and Finite Element Simulation Wang Qingli Hou Tingting Li Qinggang, et al
- 8 Static Performance of the High-Performance Concrete Filled Steel Tubular Stub Column (II) :
Mechanism Analysis and Load Bearing Capacity Wang Qingli Li Ruilin Li Qinggang, et al
- 13 Static Performance of the High-Performance Concrete Filled Steel Tubular Flexural Member (I) :
Experimental Study and Finite Element Simulation Wang Qingli Liu Xiaochen Li Qinggang, et al
- 18 Static Performance of the High-Performance Concrete Filled Steel Tubular Flexural Member (II) :
Mechanism Analysis and Load Bearing Capacity Wang Qingli Wu Jun Li Qinggang, et al
- 24 Static Performance of the High-Performance Concrete Filled Steel Tubular Beam-Column (I) :
Experimental Study and Finite Element Simulation Yin Xiaodong Li Qinggang Wang Qingli
- 30 Static Performance of the High-Performance Concrete Filled Steel Tubular Beam-Column (II) :
Mechanism Analysis and Load Bearing Capacity Yin Xiaodong Li Qinggang Wang Qingli
- 36 Planning Study on the Cultural and Creative Industrial Parks in the
Context of Industrial Heritage Reuse Xie Dixiang Chen Huiqi Deng Yawen
- 40 The Study on Planning and Architectural Design of Business Park's Upgrade and Update,
Against the Background of 'Three Old' Reforming Zhu Xuemei Jiang Haiyan Xie Dixiang, et al
- 44 Research on Design and Control of Roof Form of Urban Buildings Zhang Mu Hong Zaisheng Li Xiaojuan, et al
- 48 Analysis of Energy-Saving Research on Planting
Roofs both at Home and Abroad Ning Qiao Gao Hui Zhang Zhenyuan
- 52 Experiment Study and Numerical Simulation
Analysis of Metal Alloy Brace Xu Weibing Yan Weiming Chen Yanjiang, et al
- 57 The Near-Field Seismic Vertical and Horizontal Response
Spectra and Design Spectra Yin Jiang Hu Qigao Li Peng
- 61 Experimental Research on Seismic Behavior of Load-Bearing Wall
with Compound Insulation Concrete Blocks Xu Ming Peng Zhu Chen Zhongfan
- 67 Effects of Layers and Floor Height on Quantity of Shear
Walls in Tall Buildings Hu Kongpeng Chen Daozheng
- 71 Effect of Soil Grain Composition on Soil Electrical Resistivity Zha Fusheng Liu Songyu Du Yanjun, et al
- 75 Rupture Analysis of Shaft Lining in the Deep Alluvium Considering the Thermal Stress He Pengli
- 79 Research on the Secondary Development of Elasto-Plastic Constitutive
Model in Strain Space of FLAC^{3D} Zhang Huabin Wang Zhiyin Ran Lina
- 84 Effects of Adding Basalt Fiber on Bond Properties Between
Deformed Bar and Concrete Hu Xinguo Zhu Han
- 88 Experimental Study on Adiabatic Temperature Rise of High Performance
Self-Compacting Concrete for Marine Structure Wang Chengqi Zhuang Hua Zhang Yueran, et al
- 93 Orthogonal Experiment Research on Mix Ratio of
C30 Self-Compacting Concrete in Urumqi Chen Bo Liu Qing He Yuanye
- 97 Whole Frame Experimental Study on Joint Stiffness of Steel Tubular Scaffold with
Couplers Based on Displacement Back Analysis Theory Chen Anying Guo Zhengxing
- 103 Analysis of the Optimization of Underpinning Frame
in Building Relocation by Sliding Hong Ying Wang Yunchuan
- 108 Proposed Design Method of Combined Connections with
Bolts and Longitudinal Welds for Steel Structure Shi Yongjiu Wang Lei Wang Yuanqing, et al
- 113 Experiments and Influence Parameters Analysis of New Type of Thin-Walled
Square Steel Tube Beam-Column Joint Xu Bin Yao Yong Deng Yongjun, et al
- 120 The Pushover Analysis of Mega Steel Frame-Cable Bracing Structure Tang Baijian Peng Xiaolong Shao Jianhua
- 125 Experimental Study on Brick Walls Strengthened with
Sided Latticed Steel Plate Zhang Guangtai Yu Xiaojun
- 129 Design of BRBS in Seismic Restrofitting of the Classroom
Building in a Primary School Gao Peng Ye Xianguo Xu Qing
- 133 Reinforcement Design for 300 t Converter's High-Rise
Frame of a Steel Mill Building Li Maoxin Zhang Haojun Shi Zhilong, et al
- 138 The Inspection and Reinforcement on the Steel
Truss of a Belt Transport Corridor Yang Jue Zheng Qizhen Han Mingfei
- 142 Foundation Design of a Super High-Rise Building with Enlarged Base Wang Chao Luo Xiaoyong
- 147 Structure Analysis & Design of a Multifunctional Corridor in Automobile Manufactory Qiu Peng
- 153 Artistic Expression of Industrial Buildings:
Design of Grain Reserve Processing Centre in Guangzhou City Wang Zuyuan Guo Chanjiao
- 156 Culture, Context: Planning and Architectural Design of
Yongchang County Cultural Center Chen Cong Liu Tao