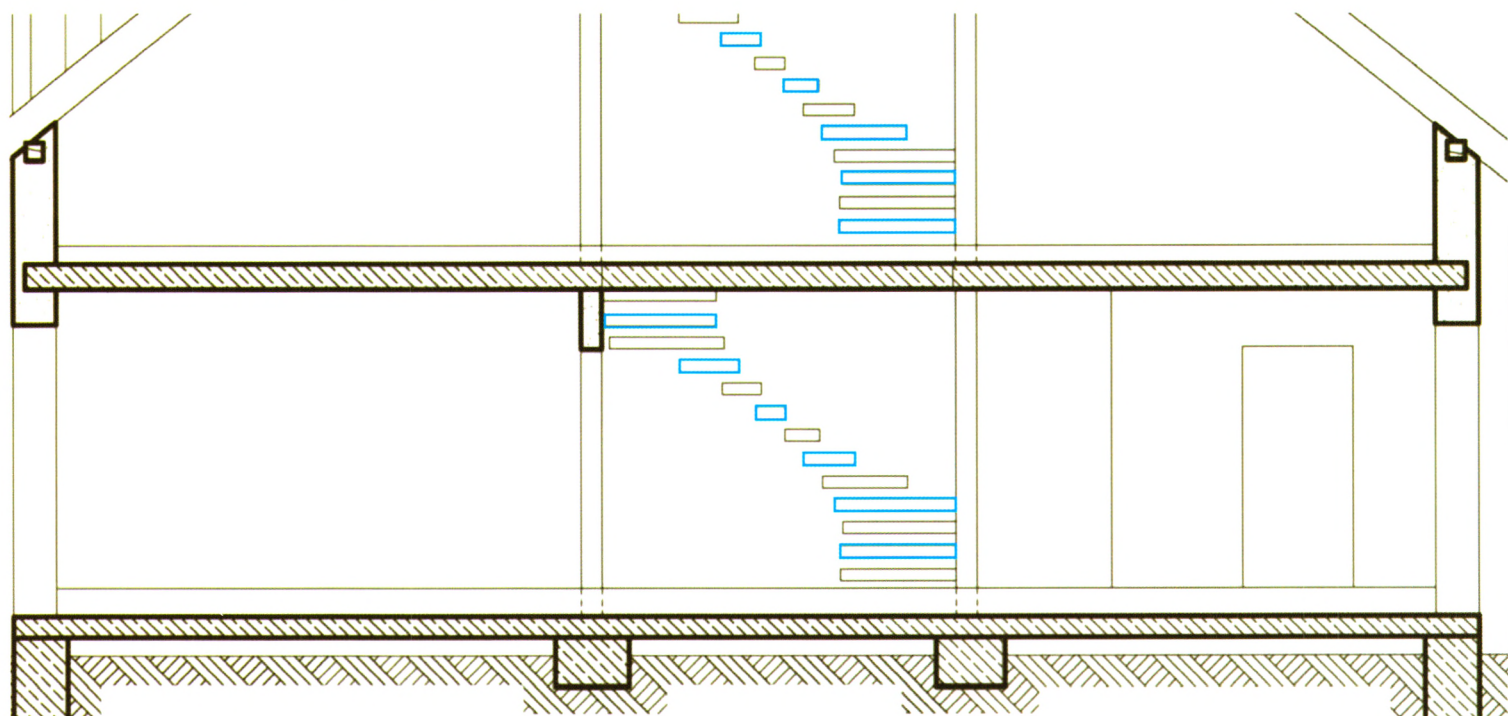


工业建筑



Industrial Construction

中文核心期刊 主办：中冶建筑研究总院有限公司



CHTOOLS 浙江欣兴工具有限公司
ZHEJIANG XINXING TOOLS CO., LTD.

2013.5

43卷 | 第482期

Industrial Construction

大型工程施工技术研究和应用

- 1 某大跨度单层空间曲面钢网壳的安装技术 程显凤 厉明山
5 弦支穹顶结构施工模拟研究 金波 傅刚辉 郭佳民
9 巨柱框架-核心筒-伸臂桁架结构体系施工过程的动态模拟 李勇 管昌生 程骥, 等
14 超高层建筑顶升模板体系设计及模态分析 白雪 马海彬 姚传勤, 等
18 生态复合墙结构体系施工技术要点分析 官帅周 黄炜 石安仁, 等
24 EPR核电站内安全壳筒体施工全过程力学性能分析 卢海陆 李政 谭俊, 等
28 核电 AP1000 钢制安全壳环体模块吊装方法研究 郑建祥 邱国志 鲁小军, 等
33 “两联六口”组合截面箱型钢柱制作技术的研究和应用 徐晓博 赵倩 李慧莹
- 37 生态建筑中庭空间的设计研究 夏博
40 夏热冬冷地区气候适应性可再生能源建筑研究 张辉 余庄
44 太阳能烟囱在居住建筑中的运用 王伟超 刘丽娜 陈兴义
47 钢纤维增强异形柱框架节点受力性能试验研究 戎贤 张健新 李燕君, 等
52 钢筋再生混凝土楼板的承载性能试验研究 陈宗平 杨貽斌 郑述芳, 等
57 硫酸盐和氯盐侵蚀后钢筋混凝土梁的抗剪性能 吴庆 陈小健 汪俊华, 等
64 再生混凝土梁正截面裂缝宽度计算方法研究 刘超 白国良 冯向东, 等
68 黏滞阻尼器控制偏心结构扭转耦联振动效果分析 李永靖 张晶 张旭
73 水下浅埋暗挖软岩隧道拱部系统锚杆功效 邓宗伟 冷伍明 黎永索, 等
79 非均质地基中群桩竖向力学反应分析 李早
86 合肥滨湖新区软土物理力学特性相关性分析 邵艳 王仕传 李长勇
90 碎裂岩中土工布复合锚杆与传统锚杆对比试验 张艳军 王超雄 张荣, 等
94 新型复合砌块砌体抗剪强度试验研究 何明胜 王勇 夏多田, 等
99 荷载作用下粉煤灰混凝土一维、二维碳化研究 陈树东 钱纯玉 李启华, 等

综述

- 103 中国空间网格结构三十年的发展 刘锡良

工程建设技术标准动态

- 108 地震作用下侧移验算对比及弹塑性侧移计算公式(2) 童根树 周卫东 张磊
115 混凝土结构设计新规范黏结滑移本构关系适用性分析 徐港 王谊敏 王青, 等

现代钢结构

- 118 肋环型劲性支撑穹顶结构静力性能研究 薛素铎 高占远 李雄彦, 等
122 顶底角钢自复位钢框架 $M-\theta$ 关系的研究 惠宽堂 巨晶
128 矩形中空夹层钢管混凝土轴压构件的试验研究 谢力 陈梦成 黄宏
132 方钢管混凝土压弯构件截面非线性分析 张岚
137 基于统一强度理论的哑铃型钢管混凝土柱极限承载力研究 李艳 赵均海 梁文彪, 等

鉴定·加固·改造

- 144 碳纤维布加固锈蚀钢筋混凝土梁抗弯性能研究 贾彬 程进 蒙乃庆, 等
148 碳纤维增强材料(CFRP)加固钢梁的疲劳试验研究 郑云 岳清瑞 陈焱, 等

工程实录

- 153 某小型城市生活小区的绿色节能设计 孙凤明 田亮 郭晓英

建筑设计漫谈

- 157 城市节点概念及其空间范畴探析 刘晨宇 李广慧

世界文化遗产名录中的工业遗产

刘伯英

- 1 Installation Technology of Large-Span Single-Layer Space Curved Steel Shell Structure Cheng Xianfeng Li Mingshan
Jin Bo Fu Ganghui Guo Jiamin
- 5 Construction Simulation of Suspended-Dome Structures Li Yong Guan Changsheng Cheng Ji, et al
- 9 Dynamic Simulation of Construction Process of Giant Column Frame-Core Tube-Cantilever Truss Structure System Bai Xue Ma Haibin Yao Chuanqin, et al
- 14 Design and Modal Analysis of Jacking Form System for Super High-Rise Building Gong Shuaizhou Huang Wei Shi Anren, et al
- 18 Key Points Analysis of Construction Technology of Ecological Composite Walls Structure System Lu Hailu Li Zheng Tan Jun, et al
- 24 The Whole Process Construction Mechanical Analysis of Containment Cylinder for Nuclear Power Plant Zheng Jianxiang Qiu Guozhi Lu Xiaojun, et al
- 28 Study on Lifting Method for Steel Cylinder of the Containment of AP1000 Nuclear Plant Xu Xiaobo Zhao Qian Li Huiying Xia Bo
- 33 Study on Manufacture Technology of "Two-Line-Six-Opening" Composite Box Steel Columns Zhang Hui Yu Zhuang Wang Weichao Liu Lina Chen Xingyi
- 37 Research on the Atrium Space Design in Ecological Building Rong Xian Zhang Jianxin Li Yanjun, et al
- 40 Research on Climate Adaptability of Energy Conservation Building with Renewable Energy Sources in Hot-Summer and Cold-Winter Zone Chen Zongping Yang Yibin Zheng Shufang, et al
- 44 Appliance of the Solar Chimney in the Residential Buildings Wu Qing Chen Xiaojian Wang Junhua, et al
- 47 Experimental Research on Mechanical Behavior of Interior Joints of Specially Shaped Column Frames Reinforced by Steel Fiber Liu Chao Bai Guoliang Feng Xiangdong, et al
- 52 Experimental Research on Mechanical Property of Reinforced Recycled Aggregate Coarse Concrete Floor-Slab Li Yongjing Zhang Jing Zhang Xu
- 57 Shear Performance of Reinforce Concrete Beams Corroded by Sulfate Salt and Chloride Deng Zongwei Leng Wuming Li Yongsuo, et al
- 64 Study on Crack Widths of Normal Sections of Recycled Concrete Beams Li Zao
- 68 The Vibration Control Effect Analysis of Torsion Coupling Response of Eccentric Structures with the Viscous Dampers Shao Yan Wang Shichuan Li Changyong
- 73 Study on Systematic Bolts Efficacy in Arch of Soft Rock Tunnel by the Shallow Mining Method Zhang Yanjun Wang Chaoxiong Zhang Rong, et al
- 79 The Analysis of Pile Groups Vertical Response in Non-Homogeneous Soils He Mingsheng Wang Yong Xia Duotian, et al
- 86 Correlation Analysis of Physical and Mechanical Characteristics Indexes of Soft Soil for the Lakeshore New Distract in Hefei Chen Shudong Qian Chunyu Li Qihua, et al
- 90 Contrast Test Between Geofabric-Composite Bolt and Traditional Bolt in the Cataclastic Rock Liu Xiliang
- 94 Experimental Study on Shearing Strength of the New Composite Block Masonry Tong Genshu Zhou Weidong Zhang Lei
- 99 Research on 1 Dimension and 2 Dimension Carbonation of Fly Ash Concrete Under Loading Xu Gang Wang Yimin Wang Qing, et al
- 103 The Development of Spatial Grid Structures in China in the Last Thirty Years Xue Suduo Gao Zhanyuan Li Xiongyan, et al
- 108 Comparison of Seismic Design Approach for Building Structures and a New Derivation of the Relation Between Drifts for Design Level and Medium Earthquakes (2) Xi Kuantang Ju Jing
- 115 Applicability Analysis of Bond-Slip Constitutive Relationship in the New Code for Design of Concrete Structures Xie Li Chen Mengcheng Huang Hong
- 118 Study on Static Performance of Geiger Rigid Bracing Dome Zhang Lan
- 122 Research in $M-\theta$, Relationship of Self-Centering Steel Connection with Bolted Top and Seat Angles Li Yan Zhao Junhai Liang Wenbiao, et al
- 128 Experimental Study on Rectangular Concrete-Filled Double-Skin Steel Tubes Subjected to Eccentric Compressive Load Jia Bin Cheng Jin Meng Naiqing, et al
- 132 Nonlinear Analysis of Concrete-Filled Square Steel Tubular Beam-Column Sections Under Bending and Axial Load Zheng Yun Yue Qingrui Chen Xuan, et al
- 137 Study on Ultimate Bearing Capacity of Dumbbell Shaped Concrete-Filled Steel Tubular Column Based on Twin Shear Unified Strength Theory Sun Fengming Tian Liang Guo Xiaoying Liu Chenyu Li Guanghui
- 144 Flexural Behavior of Corroded Reinforced Concrete Beams Strengthened with Carbon Fiber Composite Sheets
- 148 Fatigue Test Research on CFRP Strengthened Steel Beam
- 153 The Design of a Certain Discussion Green Energy-Saving Housing Estate for Small Cities
- 157 A Probe into City Joint and its Space Domain