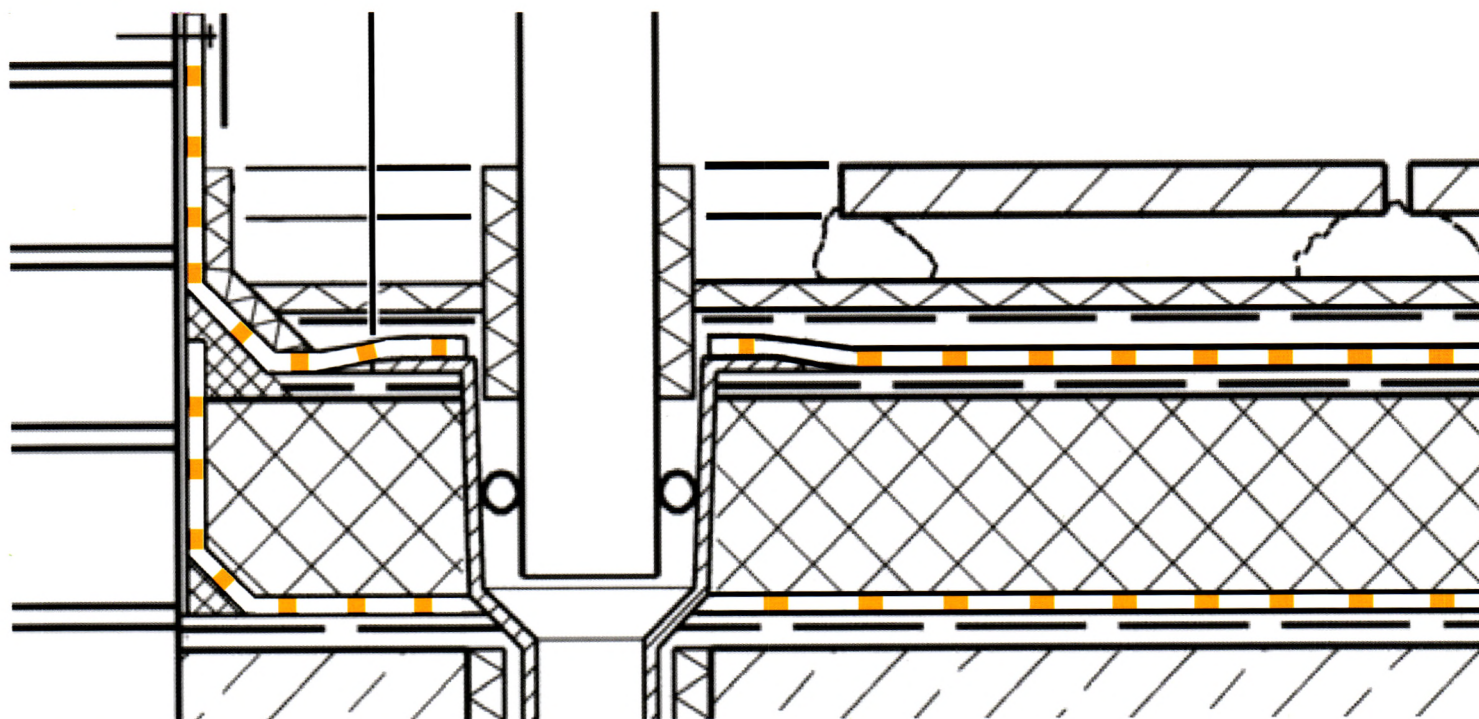


工业建筑



Industrial Construction

中文核心期刊 主办：中冶建筑研究总院有限公司



北方空间
NORTH SPACE

2013.6

43卷 | 第483期

Industrial Construction

纤维增强复合材料 (FRP) 研究进展

- 1 国产碳纤维拉伸性能研究
- 5 碳纤维复合材料棒材力学性能试验方法研究
- 9 基于 Taguchi 方法的碳纤维复合材料拉挤工艺优化
- 14 加速老化环境下纤维增强复合材料耐腐蚀性能试验研究
- 18 混杂纤维布约束混凝土柱力学性能的研究
- 23 预应力混杂纤维板增强混凝土梁的抗弯试验研究
- 27 碳纤维增强复合材料约束矩形空心墩抗震性能试验研究
- 32 纤维增强材料绑扎胶结复合连接节点及其力学性能的研究
- 36 纤维增强复合材料拉挤型材桁架桥静动力性能研究

王自柯 咸贵军 李惠
李彪 杨勇新 岳清瑞, 等
洪斌 咸贵军 李惠
董志强 张光超 吴刚, 等
郭永昌 徐顺德 李丽娟, 等
焦友进 王红涛 杨才千, 等
董振华 韩强 杜修力
张保龙 吴刚 纪卫尚
冯鹏 田野 覃兆平

- 42 构建工业化住宅建筑体系与建筑部品设计方法研究
——SDE 2010 (太阳能十项全能竞赛) 实例研究
- 47 巨型框架振动台试验设计
- 52 高强钢筋混凝土异形柱抗震性能试验研究
- 56 基于双模量理论的均布荷载下简支梁的解析解及数值分析
- 60 近场地震竖向效应对结构位移的影响
- 67 基于纤维模型的偏心桥墩强震分析
- 71 土-水工结构界面剪切试验系统的研制及应用
- 76 混合电源输出方式下的一维电渗试验研究
- 84 沉管隧道离心模型试验及数值模拟
- 90 预应力高强混凝土管桩制作中预应力状态的试验研究
- 95 预应力锚索锚固长度对锚固效果的影响试验研究
- 100 混凝土结构抗力基本参数的调查统计分析

郭娟利 高辉 房涛
吴明 叶献国 蒋庆, 等
刘平 李艳艳 陈艳凤, 等
王蔚佳 邹文成 陈强
尹肇 胡其高 李鹏
魏天华 姜柱 李军, 等
常虹 夏军武 孔伟, 等
曾芳金 符洪涛 王军, 等
岳夏冰 谢永利 张宏光, 等
胡若邻 苏林王 林美鸿
宋锦秋 柳建国 纪洪广
胡晓鹏 牛荻涛 李小朝

综 述

- 105 中国空间结构三十年抗震研究的发展和展望

薛素铎 张毅刚 曹资, 等

现代钢结构

- 117 局部变形单角钢轴心受力试验研究
- 120 冷弯薄壁卷边槽钢畸变屈曲承载力的计算方法比较
- 124 复合节能轻质楼板承载力试验研究
- 129 内嵌墙板钢框架空间效应研究
- 134 主次梁高强螺栓连接节点承载力研究

常好诵 姜忻良 谢剑, 等
唐婷婷 姚谏 陈柏新
过轶青 曹平周 赵文涛
杨晓杰 孟永杰 金晓飞, 等
魏文晖 喻梦 高湛, 等

鉴定·加固·改造

- 138 江苏寒冷地区既有公共建筑的节能改造
- 141 某医院住院部抗震加固设计及施工
- 146 混凝土裂缝面压力对其深度测试结果的影响研究

季翔
舒宏博 卜勇 李红霞
毛利胜 吴佳晔 黄伯太

工程事故分析

- 150 金属屋面在我国工程应用中存在的主要问题及分析

黄唯 吴耀华

建筑设计漫谈

- 157 无实验, 不建筑——BIG 事务所创作价值观解析
- 160 青岛工业建筑表皮更新和再生实践

胡斌 张明子
王润生 杜妍

BIM 技术与应用

- 163 基于 BIM 技术的三维管线综合设计在地铁车站中的应用

沈亮峰

世界文化遗产名录中的工业遗产

刘伯英

- 1 Study of the Tensile Properties of Domestic Carbon Fibers
Wang Zike Xian Guijun Li Hui
- 5 Research on Test Method of Mechanical Properties of CFRP Bars
Li Biao Yang Yongxin Yue Qingrui, et al
- 9 Optimization of the Pultrusion Process Parameters of CFRP Plates
Hong Bin Xian Guijun Li Hui
- 14 Experimental Study on Corrosion Resistant Performance of FRP Bars
Under Accelerated Aging Environments
Dong Zhiqiang Zhang Guangchao Wu Gang, et al
- 18 Mechanical Behavior of Hybrid Fiber Confined Concrete Columns
Guo Yongchang Xu Shunde Li Lijuan, et al
- 23 Study on the Flexural Behavior of Pre-Stressed C/BFRP-Concrete
Composite Beams
Jiao Youjin Wang Hongtao Yang Caiqian, et al
- 27 Experimental Study on Seismic Performance of CFRP Confined Bridge Pier
with Rectangular Hollow Cross Section
Dong Zhenhua Han Qiang Du Xiuli
- 32 Study on the Mechanical Properties of Binding-Adhesive
Joints Applied to FRP Composites
Zhang Baolong Wu Gang Ji Weishang
- 36 Static and Dynamic Behavior of a Truss Bridge
Made of FRP Pultruded Profiles
Feng Peng Tian Ye Qin Zhaoping
- 42 The Research on Construction of Industrialized Residential Building
System and Design Method for Building Component: Cases Study on
Solar Decathlon Europe in 2010 Competition
Guo Juanli Gao Hui Fang Tao
- 47 Shaking Table Model Test Design for Super Mega Frame Structures
Wu Ming Ye Xianguo Jiang Qing, et al
- 52 Experimental Research on Seismic Behavior of High Strength
Reinforcement Concrete Specially Shaped Columns
Liu Ping Li Yanyan Chen Yanfeng, et al
- 56 Analytical Solution and Numerical Analysis for Simply Supported Beams
Under Uniformly Distributed Loads Based on Bimodular Theory
Wang Weijia Zou Wencheng Chen Qiang
- 60 The Influence of Vertical Effect of Near-Fault Earthquake on
Displacement Demand of Structures
Yin Jiang Hu Qigao Li Peng
- 67 Response Analysis of Eccentric Pier Under Strong Earthquake
Action Based on Fiber Model
Wei Tianhua Jiang Zhu Li Jun, et al
- 71 Development and Application of Experiment System
for Soil-Hydraulic Structure Interface
Chang Hong Xia Junwu Kong Wei, et al
- 76 One-Dimensional Electroosmotic Experimental Research Under the
Way of Mixed Power Output
Zeng Fangjin Fu Hongtao Wang Jun, et al
- 84 Centrifugal Model Experiment and Numerical
Simulation of Immersed Tube Tunnel
Yue Xiabing Xie Yongli Zhang Hongguang, et al
- 90 Experimental Study on the Prestress in Manufacturing of
Large-Diameter PHC Pipe Piles
Hu Ruolin Su Linwang Lin Meihong
- 95 Field Investigation on the Effect of Fixed
Length of Pre-Stressed Cables
Song Jinqiu Liu Jianguo Ji Hongguang
- 100 Investigation and Statistical Analysis on Basic Resistance
Parameters of Concrete Structure
Hu Xiaopeng Niu Ditao Li Xiaochao
- 105 Prospect and Further Development of Seismic Research on Spatial
Structures over Last Thirty Years in China
Xue Suduo Zhang Yigang Cao Zi, et al
- 117 Test Study on Axial Compression Angle Steel
with Local Deformation
Chang Haosong Jiang Xinliang Xie Jian, et al
- 120 Comparison and Study on Calculation Methods of Cold-Formed Thin-Walled
Lipped Channel Members' Capacity of Distortional Buckling
Tang Tingting Yao Jian Chen Baixin
- 124 Experimental Study on Bearing Capacity of Light-Weight
Energy-Saving Composite Floor Slabs
Guo Yiqing Cao Pingzhou Zhao Wentao
- 129 Research on the Spatial Effect of Steel
Frame with Enclosure Walls
Yang Xiaojie Meng Yongjie Jin Xiaofei, et al
- 134 Analysis of Shear Capacity of Beam-and-Girder Bolt Connections
Wei Wenhui Yu Meng Gao Zhan, et al
- 138 Energy-Efficient Reconstruction for Existing Public Buildings of Cold Regions In Jiangsu
Ji Xiang
- 141 Seismic Reinforcement Design and Construction of the
In-Patient Building of a Hospital
Shu Hongbo Bo Yong Li Hongxia
- 146 Study on the Impact of Concrete Crack Surface Pressure
on the Depth Test Results
Mao Lisheng Wu Jiaye Huang Botai
- 150 The Main Existing Problems and Analysis of Engineering
Applications for Metal Roofing in China
Huang Wei Wu Yaohua
- 157 Experiments Create Architectures: Analysis of Big's Design Values
Hu Bin Zhang Mingzi
- 160 Analysis of Renewal and Regeneration Practice of Qingdao
Industrial Building Epidermal
Wang Runsheng Du Yan
- 163 Application of Three Dimensional Comprehensive Pipeline Design
Based on BIM Technology in the Subway Station
Shen Liangfeng
- 167 Industrial Heritage in the World Heritage List
Liu Boying