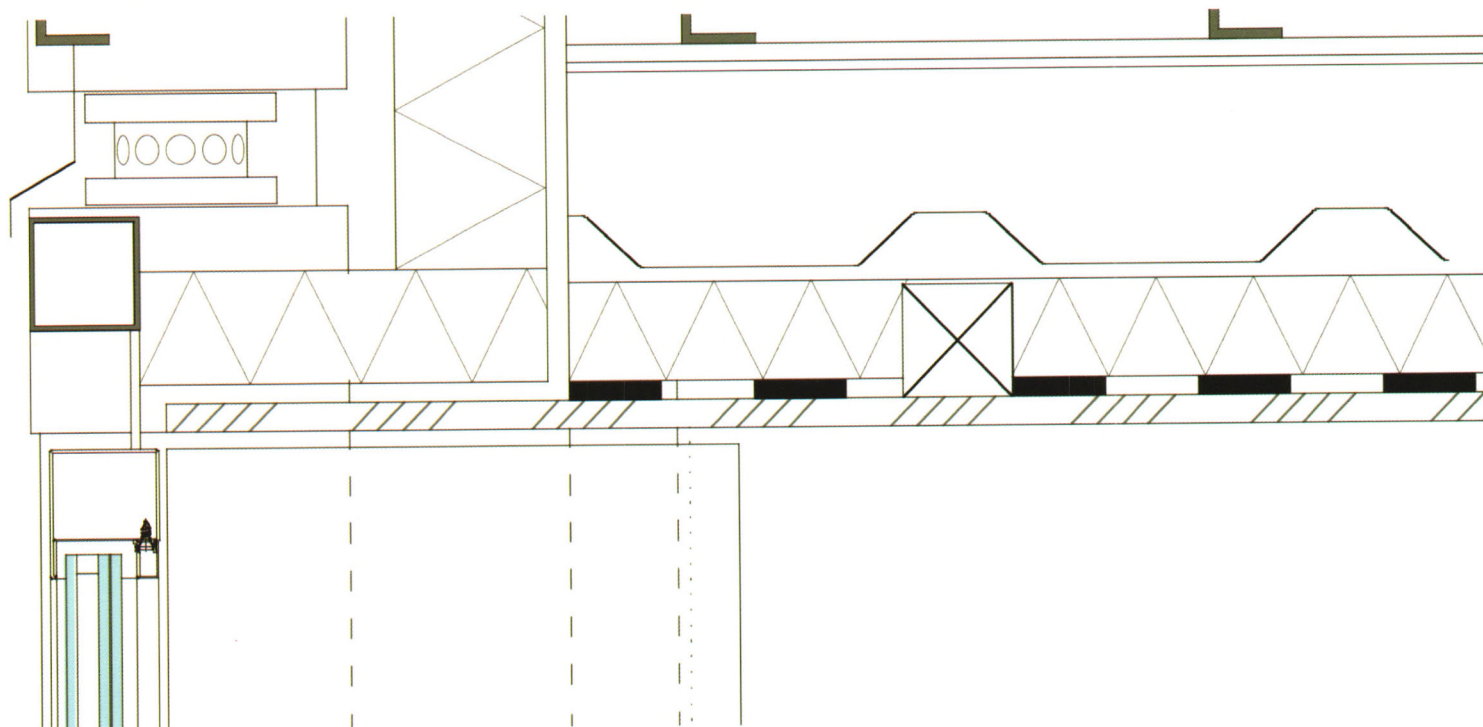


工业建筑



Industrial Construction

中文核心期刊 主办：中冶建筑研究总院有限公司



工业建筑杂志社
INDUSTRIAL CONSTRUCTION MAGAZINE

2013.8

43卷 | 第485期

Industrial Construction

结构可靠性及工程结构损伤识别研究

- | | | | |
|-----|-------------------------------|---------|--------|
| 1 | 混凝土结构全寿命性能设计理论框架研究 | 钟小平 | 金伟良 |
| 10 | 通用设计表达式灵敏度系数优化方法 | 齐风波 | 姚继涛 |
| 15 | 基于损伤柔度曲率矩阵的结构损伤识别新方法 | 彭念 | 张永兴 |
| 19 | 基于曲率的单跨梁损伤定位新指标 | | 陈建功 |
| 24 | 小波包能量谱在古木框架结构的损伤预警 | 王鑫 | 胡卫兵 |
| 29 | 框架结构模态参数识别时域方法的比较研究 | | 王艺霖 |
| 34 | 地震激励下钢筋混凝土框架结构楼层损伤研究 | 甘琳 | 李海龙 |
| 39 | 基于单元相对刚度系数的结构损伤识别研究 | 郑山锁 | 王萌 |
| 43 | 基于对数回归模型的结构易损性分析 | 胡义, 等 | 李慧 |
| | | 杜永峰 | 李卓航 |
| | | 刘骁骁 | 吴子燕 |
| | | | 孙鸿宾, 等 |
| 48 | 从巴塞罗那模式谈文化政策和城市更新 | 范建红 | 葛润南 |
| 52 | 良渚玉文化产业园旧工业厂房的改造和更新 | 董慧娟 | 张辉 |
| 55 | 相变储能材料建筑一体化设计初探 | 吕亚军 | 郭娟利 |
| 59 | 再生混凝土极限黏结强度及钢筋锚固长度取值研究 | 王博 | 白国良 |
| 64 | X形钢筋网高强砂浆加固砖墙的试验研究 | 何烈奇 | 杨俊杰 |
| 69 | 竹结构屋架试验研究与工程应用 | | 陈国肖 |
| 75 | 新疆杨木梁抗弯性能试验研究 | 塞尔江·哈力克 | 刘清 |
| 79 | 考虑裂缝分布的外贴复合纤维增强材料加固钢筋混凝土梁变形研究 | | 刘耘 |
| 83 | 动荷载作用下阜新风积土结构性参数试验研究 | 简新艳 | 朱小静 |
| 90 | 粗粒土强度特性及颗粒破碎试验研究 | 张向东 | 刘家顺 |
| 94 | 预应力混凝土管桩节点抗震性能研究 | 王子寒 | 周健 |
| 98 | 对空间框架式基础按平面框架基础作振动计算的讨论 | | 赵振平, 等 |
| 101 | 混杂纤维喷射混凝土的力学性能试验研究 | | 戎贤 |
| 106 | 15 m高模板支架的现场实测研究 | 王锡康 | 杨宇 |
| | | 杨健辉 | 李燕飞 |
| | | | 丁鹏, 等 |
| | | | 陈旭 |

现代钢结构

- | | | | |
|-----|------------------------------|-----|------------|
| 109 | 型钢再生混凝土偏心受压柱刚度及变形分析 | 薛建阳 | 林建鹏 |
| 114 | 基于OpenSees的型钢再生混凝土短柱抗剪性能数值模拟 | 薛建阳 | 王成 |
| 120 | 侧板与梁翼缘连接焊缝对节点断裂性能的影响 | 刘芸 | 王燕 |
| 125 | 厚度阶梯式改变圆柱壳体在均匀外部压力作用下的屈曲分析 | 谌磊 | J.M.Rotter |
| 133 | 深圳火车北站高架轻轨列车振动效应分析 | 吴兵 | 傅学怡 |
| | | | 马辉, 等 |
| | | | 马辉, 等 |
| | | | 宋永杰, 等 |
| | | | 彭奕亮, 等 |
| | | | 孟美莉, 等 |

鉴定·加固·改造

- | | | | |
|-----|------------------------|-----|--------|
| 138 | 清华大学大礼堂的加固改造 | 杨海勇 | 汪潇潇 |
| 144 | 高层钢结构车库夹层改造结构设计 | | 谢攀 |
| 150 | 框架柱含贯通缺陷的混凝土结构安全性鉴定及加固 | 王雪艳 | 胡长明 |
| | | | 龙奋杰, 等 |
| | | | 黄小许 |
| | | | 梅源, 等 |

工程实录

- | | | | |
|-----|-------------------------|----|-----|
| 154 | 天津滨海新区四号热源厂集成煤库的规划和建筑设计 | 朱敏 | 文端 |
| 157 | 某科技园区建筑方案物理环境性能分析 | | 夏翀 |
| | | | 张代刚 |
| | | | 袁海波 |

建筑设计漫谈

- | | | | |
|-----|-----------------|-----|-----|
| 161 | 可持续花园城市的思考和设计方法 | 徐娅 | 张鹤娟 |
| 165 | 信息时代影院建筑设计探讨 | 庄莉莉 | 曾坚 |
| | | | 赵睿祺 |
| | | | 洪再生 |

国际科技交流

- | | | | |
|-----|-------------------|-----|----|
| 170 | 2013年德国钢结构获奖建筑的启示 | 乔亚玲 | 白云 |
|-----|-------------------|-----|----|

世界文化遗产名录中的工业遗产

刘伯英

- 1 Framework of Design Theory of Whole Life-Cycle Performance in Concrete Structure
Zhong Xiaoping Jin Weiliang
Qi Fengbo Yao Jitao
- 10 An Optimization of Sensitivity Factors for General Design Formula
Peng Nian Zhang Yongxing Chen Jianguo
- 15 A New Method of Damage Identification in Structure Based on Damage Flexibility Curvature Matrix
Wang Yilin
- 19 New Damage Localization Indicator for Single-Span Beams Based on Curvature
Wang Xin Hu Weibing Han Guangsen
- 24 Structural Damage Alarming for Ancient Wood Frame Structure Based on Wavelet Packet Energy Spectrum
Gan Lin Li Hailong
- 29 Comparative Study on Modal Parameter Identification Time Domain Methods for Frame Structure
Zheng Shansuo Wang Meng Hu Yi, et al
- 34 Research on the Storey Damage Modle of RC Frame Structure Under Seismic Excitation
Du Yongfeng Li Zhuohang Li Hui
- 39 Study on Structural Damage Identification Based on the Relative Element Stiffness Coefficient
Liu Xiaoxiao Wu Ziyang Sun Hongbin, et al
Fan Jianhong Ge Runnan
- 43 Research of the Seismic Fragility of Structure Based on Linear Logistic Regression Model
Dong Huijuan Zhang Hui Zong Xiaodong
- 48 Cultural Policy and City Renewal Form Barcelona Model
Lü Yajun Guo Juanli Gao Hui, et al
- 52 Decomposition and Reconstruction of Orders Reconstruction Design of Old and Waste Factory Buildings in Liangzhu Jade Cultural Industry Park
Wang Bo Bai Guoliang Wu Shuhai, et al
- 55 Initial Study on Integration Design of Phase Change Materials and Buildings
He Lieqi Yang Junjie Jin Cheng, et al
Chen Guo Xiao Yan
- 59 Study on Ultimate Bond Strength and Anchorage Length of the Rebar in the Recycled Aggregate Concrete
Saierjiang Halike Liu Qing Liu Yun
- 64 Experimental Research on the Reinforcement of Brick Walls with X-Shaped Steel Mesh and High-Strength Mortar
Lin Xinyan Zhu Xiaojing Meng Haiping
- 69 Experimental Study and Engineering Application of Bamboo Roof Truss
Zhang Xiangdong Liu Jiashun Zhang Zhecheng
- 75 Primary Experimental Study on the Xinjiang Poplar Timber Beam Flexural Behavior
Wang Zihan Zhou Jian Zhao Zhenping, et al
- 79 Researches on Deformability of RC Beams Strengthened with External CFRP Sheets Considering the Crack Distribution
Rong Xian Li Pengfei
- 83 Experimental Study on Structural Parameters of Fuxin Aeolian Soil Under Dynamic Loads
Wang Xikang Yang Yu Wang Yuhong
- 90 Experimental Study on Strength and Crushing Behavior of Coarse-Grained Soil
Yang Jianhui Li Yanfei Ding Peng, et al
Chen Xu
- 94 Study on Seismic Performance of the Joint of Prestressed Concrete Pipe Piles
Xue Jianyang Lin Jianpeng Ma Hui, et al
- 98 Discussion About Vibration Computation of Space Frame Foundation Regarded as Plane Frame Foundation
Xue Jianyang, Wang Cheng, Ma Hui, et al
- 101 Experimental Study on Mechanical Properties of Hybrid Fibers Reinforced Shotcrete
Liu Yun Wang Yan Song Yongjie, et al
- 106 Study on Field Measurement of High Formwork with a Height of 15 m
Chen Lei J. Michael Rotter Peng Yiliang, et al
- 109 Stiffness and Deformation Analysis of Steel Reinforced Recycled Concrete Eccentric Compression Columns
Wu Bing Fu Xueyi Meng Meili, et al
- 114 Numerical Simulation of Shear Behavior of Steel Recycled Aggregate Concrete Short Columns Based on OpenSees Program
Yang Haiyong Wang Xiaoxiao Long Fenjie, et al
- 120 Effect of Weld Between Side-Plate and Beam Flange on the Brittle Fracture of Side-Plate Reinforced Joint
Xie Pan Huang Xiaoxu
- 125 Buckling Behaviour of Shells of Stepped Wall Cylinders Under Uniform External Pressure
Wang Xueyan Hu Changming Mei Yuan, et al
- 133 Analysis of Vibration Effects of Elevated Light Rail Train Through Shenzhen North Railway Station
Zhu Min Wen Duan Zhang Daigang
- 138 Reinforcement and Repair of the Auditorium of Tsinghua University
Xia Chong Yuan Haibo
- 144 Structural Design of Adding Storey Retrofit of High-Rise Steel Garage
Xu Ya Zhang Gejuan Zhao Ruiqi
- 150 Security Analysis and Strengthening of Concrete Structure with Through Defect in Frame Column
Zhuang Lili Zeng Jian Hong Zaisheng
- 154 The Planning and Architecture Design of Integrated Coal Bunker of the Fourth Heat Source Plant in Tianjin Binhai New Area
Qiao Yaling Bai Yun
Liu Boying
- 157 Simulation Analysis of the Implementation Strategy of the Architecture Schematic Design Using Ecotect Software
- 161 Study and Design Method of Sustainable Garden City
- 165 Discussion on the Function Extension of the Cinema Building in the Information Age
- 170 Enlightenment from a Prize-Winning Building of German Steel Structures in 2013
- 173 Industrial Heritage in the World Heritage List