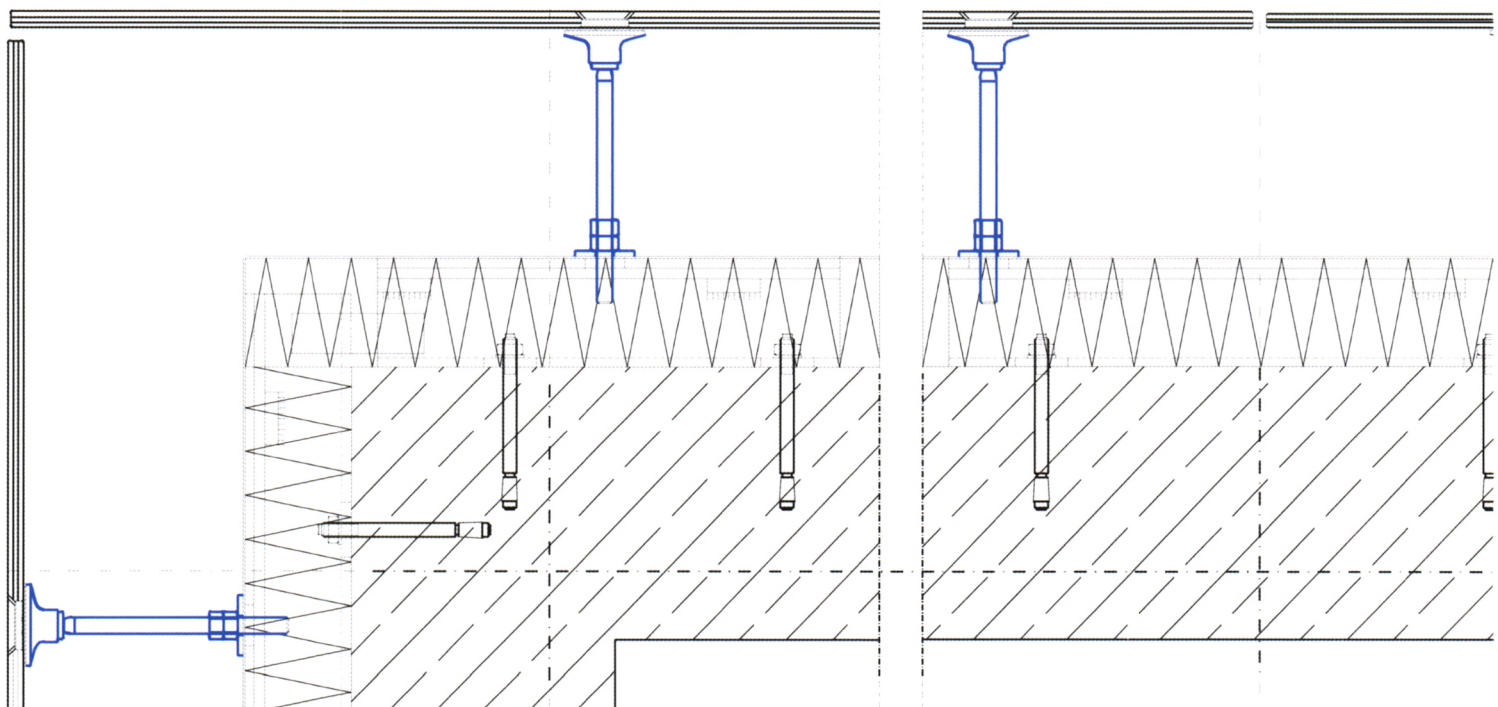


# 工业建筑



## Industrial Construction

中文核心期刊 主办：中冶建筑研究总院有限公司



中冶京诚工程技术有限公司  
CAPITAL ENGINEERING & RESEARCH LIMITED

# 2013.9

43卷 | 第486期

# Industrial Construction

## 型钢再生混凝土结构性能研究

- |                                    |     |     |        |
|------------------------------------|-----|-----|--------|
| 1 型钢-再生混凝土界面黏结强度及其影响因素分析           | 陈宗平 | 陈宇良 | 郑华海, 等 |
| 7 型钢再生混凝土梁抗剪承载力及其可靠度分析             | 马 辉 | 薛建阳 | 林建鹏, 等 |
| 11 型钢再生混凝土梁受弯性能试验及承载力计算            | 陈宗平 | 陈宇良 | 覃文月, 等 |
| 17 型钢再生混凝土短柱抗剪承载力计算                | 薛建阳 | 敖 翔 | 马 辉, 等 |
| 23 型钢再生混凝土组合柱正截面受力性能的有限元分析         | 薛建阳 | 孟 刚 | 刘祖强, 等 |
| 30 型钢再生混凝土柱水平承载力及轴压比限值的试验研究        | 薛建阳 | 王运成 | 马 辉, 等 |
| 35 型钢再生混凝土长柱恢复力模型的试验研究             | 薛建阳 | 刘锦禄 | 马 辉, 等 |
| 40 低周反复荷载下型钢再生混凝土长柱非线性数值模拟分析       | 薛建阳 | 张 杰 | 马 辉, 等 |
| 46 伦敦奥运会主体育场可持续发展技术初探              |     | 喻汝青 | 汤朔宁    |
| 50 城市化进程中道旁建筑回归绿色的思考               |     | 孙 刚 | 刘志麟    |
| 53 低周反复荷载下二层再生混凝土框架抗震性能试验研究        | 胡 波 | 柳炳康 | 王成刚, 等 |
| 59 钢板箍加栓筋新型连接节点试验研究及理论分析           | 李青宁 | 郑先超 | 徐明堂, 等 |
| 65 轴压比对预应力混凝土框架抗震能力影响研究            |     | 岑文祥 | 张耀庭    |
| 71 基于 ANSYS 的部分预应力混凝土梁疲劳性能模拟       |     | 雷 兵 | 宋玉普    |
| 77 钢筋混凝土板受冲切承载力对比分析                |     | 史庆轩 | 李博宇    |
| 83 生活钠铍盐污染对黏性土水理力学性质的影响            | 王 勇 | 曹丽文 | 温文富, 等 |
| 88 基于径向基函数的海堤监控模型及预测置信度判别          |     | 黄 铭 | 刘 俊    |
| 92 对偶体系下层状地基动柔度精细解法                | 李伟东 | 林 皋 | 祝红山    |
| 96 预制自排水桩的试验研究                     | 李富荣 | 周 乾 | 吴发红    |
| 101 普瑞隧道明挖段深基坑设计及施工安全性分析           |     |     | 杨 平    |
| 106 超高性能水泥基复合材料三点弯曲梁断裂韧度的试验测定及影响规律 | 王海超 | 王志军 | 高淑玲, 等 |
| 111 基于复合胶凝材配制隧道衬砌高性能混凝土试验研究        | 王海彦 | 仇文革 | 满 帅, 等 |
| 116 三代核电吊装施工用大型履带起重机适用性设计          |     |     | 牛玉飞    |

## 现代钢结构

- |                             |     |     |        |
|-----------------------------|-----|-----|--------|
| 120 内填砂卵石薄壁方钢管柱轴压性能试验研究     | 刘 欢 | 姚 勇 | 褚云朋, 等 |
| 124 某大跨度运输通廊考虑温度应力影响及动力特性分析 | 董立婷 | 王 燕 | 张 栋    |
| 129 考虑太阳辐射影响的双向张弦梁结构温度效应研究  | 刘红波 | 陈志华 | 陈滨滨    |
| 134 异型钢煤斗非线性有限元分析           | 余少乐 | 杨应华 | 张文莹    |
| 140 巨型钢管桁架在大跨度机库结构中的应用      |     | 裴永忠 | 徐 瑞    |

## 鉴定·加固·改造

- |                          |     |     |        |     |
|--------------------------|-----|-----|--------|-----|
| 144 西单铝合金天桥的安全性评定检测与分析   | 王元清 | 宗 亮 | 张天申, 等 |     |
| 149 钢纤维水泥砂浆钢筋网加固法的技术经济分析 |     | 卜良桃 | 吴伟华    | 刘尚凯 |
| 154 软土地区沿长轴倾斜房屋的纠偏加固     | 谢石连 | 夏才初 | 张 弘, 等 |     |

## 工程实录

- |                             |     |     |        |
|-----------------------------|-----|-----|--------|
| 158 郑州大学药物安全性评价研究中心建筑设计理念剖析 |     | 韦 峰 | 徐维波    |
| 162 帆船之都理念下的新作: 青岛万丽海景      |     | 王晓静 | 杨 斌    |
| 165 装配式剪力墙结构体系在万科金域蓝湾建筑中的应用 | 曲 艺 | 刘 迪 | 张 然, 等 |

## 建筑设计漫谈

- |                  |     |     |     |
|------------------|-----|-----|-----|
| 169 旧城区城市广场的改造策略 | 赵 阳 | 杨希文 | 罗志华 |
|------------------|-----|-----|-----|

## 世界文化遗产名录中的工业遗产

刘伯英

- 1 Analysis of Influence Factors and Bond Strength of Steel-Recycled Aggregate Concrete Interface Chen Zongping Chen Yuliang Zheng Huahai, et al
- 7 Reliability Analysis on Shear Capacity of Steel Recycled Aggregate Concrete Beam Ma Hui Xue Jianyang Lin Jianpeng, et al
- 11 Test of Flexural Behavior and Ultimate Capacity Calculation of Steel Reinforced Recycled Aggregate Concrete Beams Chen Zongping Chen Yuliang Qin Wenyue, et al
- 17 Calculation on the Shear Bearing Capacity of Steel Recycled Aggregate Concrete Short Column Xue Jianyang Ao Xiang Ma Hui, et al
- 23 Finite-Element Analysis of Mechanical Behaviors of Normal Cross-Section of Steel Recycled Aggregate Concrete Composite Columns Xue Jianyang Meng Gang Liu Zuqiang, et al
- 30 Experimental Study on Lateral Bearing Capacity and Axial Compression Ratio Limit Values of Steel Reinforced Recycled Aggregate Concrete Columns Xue Jianyang Wang Yuncheng Ma Hui, et al
- 35 Experimental Study on Restoring Force Model of Steel Reinforced Recycled Aggregate Concrete Columns Xue Jianyang Liu Jinlu Ma Hui, et al
- 40 Non-Linear Numerical Simulation Analysis of Steel Recycled Aggregate Concrete Column Under Low-Cyclic Reversed Loading Xue Jianyang Zhang Jie Ma Hui, et al
- 46 A Preliminary Study on the Sustainable Development Technique of the London Olympics Main Stadium Yu Ruqing Tang Shuoning
- 50 Consideration of Designing Roadside Green Buildings During Urbanization Process Sun Gang Liu Zhilin
- 53 Experimental Study on Seismic Performances of a Two-Storey Reinforced Recycled Aggregates Concrete Frame Under Low-Cycle Repeated Load Hu Bo Liu Bingkang Wang Chenggang, et al
- 59 Experimental Research and Theoretical Analysis of a New Connection Node with Steel Plate Hoop and Bolt Tendons Li Qingning Zheng Xianchao Xu Mingtang, et al
- 65 Study on the Effects of Axial Compression Ratio on Seismic Capacity of Prestressed Concrete Frame Cen Wenxiang Zhang Yaoting
- 71 Fatigue Performance Simulation of Partially Prestressed Concrete Beams Based on ANSYS Lei Bing Song Yupu
- 77 Comparative Analysis of Punching Shear Capacity for Reinforced Concrete Slab Shi Qingxuan Li Boyu
- 83 Effect of Domestic Sodium and Ammonium Salt Pollution on Hydrophysical and Mechanical Properties of Cohesive Soils Wang Yong Cao Liwen Wen Wenfu, et al
- 88 Sea Wall Monitoring Model Based on Radial Basis Function and Distinguishability on its Forecast Confidence Level Huang Ming Liu Jun
- 92 A Precise Method for Dynamic Flexibility of Layer Foundation in the Duality System Li Weidong Lin Gao Zhu Hongshan
- 96 Experimental Study on Precast Self-Draining Pile Li Furong Zhou Qian Wu Fahong
- 101 The Analysis of the Design and Construction Security of Deep Foundation in Purui Tunnel Open-Cut Segment Yang Ping
- 106 Experimental Determination of Fracture Toughness of Three-Point Bending UHPCC Beam and Influence Law Wang Haichao Wang Zhijun Gao Shuling, et al
- 111 Experimental Research on High-Performance Concrete Tunnel Lining Based on Composite Cementitious Material Wang Haiyan Qiu Wenge Man Shuai, et al
- 116 Applicability Design of Large Crawler Crane for Construction of Third Generation Nuclear Power Facilities Niu Yufei
- 120 Experimental Study of Performance of Axially Compressed Sandy Pebble Filled Thin-Walled Square Steel Tubular Columns Liu Huan Yao Yong Chu Yunpeng, et al
- 124 Temperature Stress Effect and Dynamic Analysis of a Large Span Transport Corridor Dong Liting Wang Yan Zhang Dong
- 129 Study on the Temperature Response of Bi-Directional Beam String Structure Considering the Solar Radiation Liu Hongbo Chen Zhihua Chen Binbin
- 134 The Nonlinear Finite Element Analysis of a Special Shaped Steel Coal Scuttle Yu Shaole Yang Yinghua Zhang Wenyong
- 140 Structure Design of Long-Span Hangar with Huge Pipe Trusses Pei Yongzhong Xu Rui
- 144 Damage Detecting and Safety Appraisal of the Xidan Aluminum Overpass Wang Yuanqing Zong Liang Zhang Tianshen, et al
- 149 Technical and Economic Analysis of Steel Fiber Ferrocement Mortar Strengthening Method Bu Liangtao Wu Weihua Liu Shangkai
- 154 Rectification and Reinforcement of a Building Tilting Along Long-Axis Direction in Soft Soil Area Xie Shilian Xia Caichu Zhang Hong, et al
- 158 The Design Concept of Zhengzhou University Center for Safety Evaluation of Drugs Wei Feng Xu Weibo
- 162 The New Works Under the Concept of Sailing City: Qingdao Wanlihaijing Project Wang Xiaojing Yang Bin
- 165 Application of Prefabricated Shear Wall Structure System in Wanke "Jin Yu Lan Wan" Buildings Qu Yi Liu Di Zhang Ran, et al
- 169 The Urban Square Design Strategies for the Old Town Zhao Yang Yang Xiwen Luo Zhihua
- 173 Industrial Heritage in the World Heritage List Liu Boying