

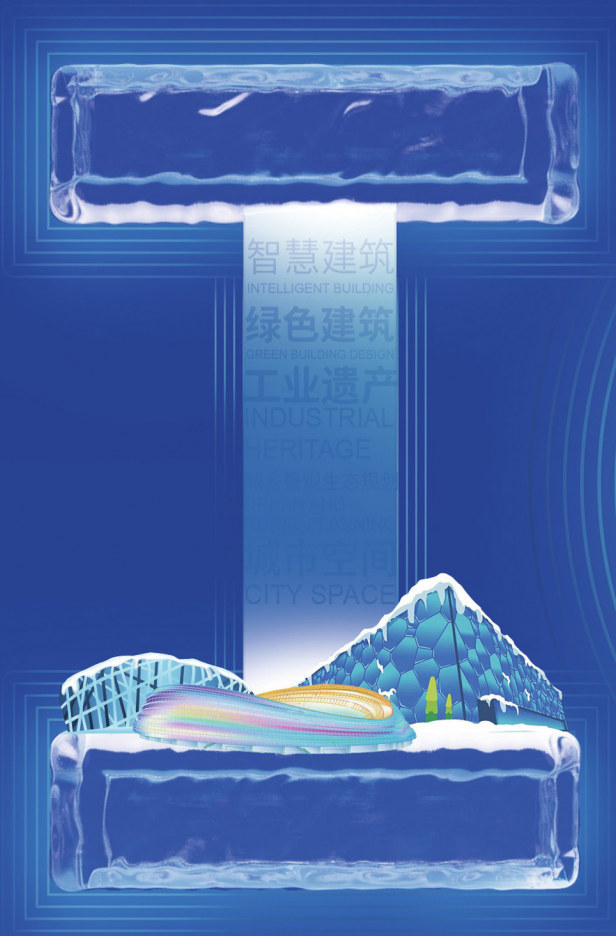
工业建筑

ISSN 1000-8993
CN 11-2068/TU
CODEN GJIAE5



INDUSTRIAL CONSTRUCTION

中文核心期刊 主办:中冶建筑研究总院有限公司
建筑科学领域高质量科技期刊分级目录期刊



工程诊治与运维
智能建造 碳中和
CARBON NEUTRAL
智能建造与运维工程



结构
高性能材料与结构
HIGH PERFORMANCE MATERIALS AND STRUCTURES
灾害预防
AND MITIGATION 防灾减灾
岩土及地下工程

2022.1

52卷 第588期

Industrial Construction

组合构件力学性能研究

- 1 圆钢管约束陶粒混凝土短柱的单轴受压试验研究及承载力计算 王宇航 赵玉婷 周绪红, 等
- 8 内斜外正双重方钢管复合约束混凝土柱轴压性能试验研究 陈宗平 宁 璠
- 17 圆截面碳纤维增强聚合物-钢管混凝土压-扭性能研究 陈朋辉 王庆利
- 26 基于统一强度理论的钢管自应力混凝土柱极限承载力研究 蒙春贵 彭林欣 滕晓丹
- 31 H型钢连接方钢管混凝土组合柱简化模拟方法 闫翔宇 张天柱 张 希, 等
- 39 预应力钢-木组合圆形柱轴心受压力学性能研究 王宇豪 刘德贵 王 宁, 等

城乡规划和建筑理论

- 47 脆弱的联盟——论复杂性建筑与复杂性科学的关系 周官武
- 52 基于社区更新的矿业遗产保护与再利用——以焦作中福矿业遗产为例 曹 颖 杨金鹏 王 宇, 等

工程结构和结构防灾

- 59 换流站封堵复合板抗火性能研究 侯 东 刘晓圣 姬 军, 等
- 65 自复位装配式混凝土框架结构抗震性能试验研究 刘 航 李 牧 杨学中, 等
- 74 预制混凝土夹芯保温墙桁架连接件抗剪性能研究 张曰果 赵志刚 尹 展, 等
- 79 与 600 MPa 钢筋混合配置的预应力筋应力增量的试验研究 李 强 马卫华 康洪震, 等
- 83 配置环形钢筋的梁桥湿接缝承载力计算方法比较研究 林上顺 暨邦冲 何永波, 等
- 90 钢梁开孔影响的分析及其设计建议 朱群红 童 济 童根树
- 98 拱形屋面风致积雪分析 张 冰 张延年 蒋 坤
- 102 带柱墙转换的某高层商住楼少墙框架结构分析设计 厉见芬 王相智 周一一
- 108 地基冻胀条件下碗扣式模板支架稳定承载力分析 徐 嫒 李晓明 刘昌永, 等
- 116 LNG 储罐多点整体提升过程的力学性能研究 杨 伟
- 122 大开口索承网格结构施工过程分析与现场实测研究 胡 阳 汪庆发 郑 宇, 等

岩土和地下工程

- 129 岩土参数概率分布的系统推断研究 孔令奇 李翠娟
- 137 塑性滑坡安全状态的确定方法研究 王卫中 高 德
- 143 大面积填土场地深厚软土中预应力管桩下拉荷载现场试验 余建飞 张 静 杨石飞
- 150 考虑土塞效应的分数阶导数描述的黏弹性饱和土中部分外露管桩扭转振动 余春春 傅 敏
- 159 软土地基填海机场堆载预压沉降预测分析方法 刘光庆 葛红斌 刘海旺, 等
- 165 机场跑道下穿隧道结构稳定性影响因素研究 魏晓刚 杨柳川 刘会丽, 等

高性能建筑材料

- 174 基于威布尔分布下纳米碳酸钙改性混凝土寿命预测研究 乔宏霞 杨 安 杨 博, 等
- 180 基于宏-细观尺度的钢渣混凝土力学性能研究 薛 刚 孙立所 赵玉杰, 等
- 187 冻融作用下风积沙浮石混凝土孔结构分形特征 薛慧君 郑建庭 邹春霞, 等
- 194 高温消防喷水冷却后混凝土应力-应变本构方程及剩余强度评估 周星宇 周 济 陈宗平
- 200 新老混凝土界面直剪力学性能测试研究 杨培仕

复材结构

- 205 碳纤维增强复材-混凝土密拼双向叠合楼板静载试验研究 彭亚萍 王文超 金 鹏, 等
- 211 碳纤维复材加固钢管的抗内爆性能 黄 辉 路四方 张 祥, 等

观点评论

- 216 中国建筑学会工业建筑分会第十三届学术年会: 人物专访 叶依谦 叶依谦 李子珺

- 1 Experimental Research and Bearing Capacity Calculation of Ceramsite Concrete Filled Circular Steel Tube Short Column Under Uniaxial Compression WANG Yuhang ZHAO Yuting ZHOU Xuhong, et al
- 8 Experimental Research on Mechanical Properties of Concrete-filled Double-skin Square Steel Tubular (Oblique Inside and Straight Outside) Columns Under Axial Compression CHEN Zongping NING Fan
- 17 Research on Mechanical Properties of Concrete Filled Circular CFRP-steel Tubular Under Compression and Torsion CHEN Penghui WANG Qingli
- 26 Research on Ultimate Bearing Capacity of Self-stressing Concrete Filled Steel Tube Based on Unified Strength Theory MENG Chungui PENG Linxin TENG Xiaodan
- 31 A Simplified Simulation Method of Concrete-filled Square Steel Tube Composite Column Connected by H-shaped Steel YAN Xiangyu ZHANG Tianzhu ZHANG Xi, et al
- 39 Experimental Research on Mechanical Properties of Prestressed Steel-timber Circular Column Under Axial Compression WANG Yuhao LIU Degui WANG Ning, et al
- 47 The Fragile Alliance: On the Relation Between Complexity Architecture and Complexity Science ZHOU Guanwu
- 52 Protection and Reuse of Mining Heritage Based on Community Renewal: Taking the Zhongfu Mining Heritage in Jiaozuo as an Example CAO Ying YANG Jinpeng WANG Yu, et al
- 59 Research on Fire Resistance of Composite Board in Valve Hall of Converter Station HOU Dong LIU Xiaosheng JI Jun, et al
- 65 Experimental Research on Seismic Performance of Self-centering Prefabricated RC Frame Structures LIU Hang LI Mu YANG Xuezhong, et al
- 74 Research on Shear Resistance of Truss Connector of Precast Concrete Sandwich Insulation Wall ZHANG Yueguo ZHAO Zhigang YIN Zhan, et al
- 79 Experimental Research on Stress Increment of Prestressed Tendon Working with 600 Megapascals Steel Bars LI Qiang MA Weihua KANG Hongzhen, et al
- 83 Comparative Research on Calculation Methods for Bearing Capacity of Wet Joints of Beam Bridges Equipped with Circular Steel Bars LIN Shangshun JI Bangchong HE Yongbo, et al
- 90 Effects of Openings on Steel Beams and its Design Suggestions ZHU Qunhong TONG Ji TONG Genshu
- 98 Analysis of Wind-induced Snow Cover on Arched Roof ZHANG Bing ZHANG Yannian JIANG Kun
- 102 Structural Analysis and Design of Less-wall Frame of a High-rise Commercial and Residential Building with Column-wall Conversion LI Jianfen WANG Xiangzhi ZHOU Yiyi
- 108 Analysis of Stability Bearing Capacity of Framework with Cuplok Brackets Under the Condition of Ground Frost Heave XU Man LI Xiaoming LIU Changyong, et al
- 116 Research on Mechanical Properties of Multi-point Integral Lifting Process of LNG Storage Tank YANG Wei
- 122 Analysis and Field Test Research on Construction Process of Cable Supported Grid Structure HU Yang WANG Qingfa ZHENG Yu, et al
- 129 Study on System Inference of Probability Distribution of Geotechnical Parameters KONG Lingqi LI Cuijuan
- 137 Research on Determination Methods of Safety States for Plastic Landslides WANG Weizhong GAO De
- 143 Field Tests of Drag Loads on Prestressed Pipe Piles in Deep Soft Soil of Large Fill Sites YU Jianfei ZHANG Jing YANG Shifei
- 150 Torsional Vibration of Partially Exposed Pipe Piles Considered Soil-plug Effect in Viscoelastic Saturated Soil Expressed by Fractional Derivatives YU Chunchun FU Min
- 159 Predictions and Analysis Methods for Subsidence of Reclaimed Airports on Soft Soil Foundation Under Preloading Loads LIU Guangqing GE Hongbin LIU Haiwang, et al
- 165 Research on Influencing Factors of Structural Stability of Airport Runway Underpass Tunnel WEI Xiaogang YANG Liuchuan LIU Huili, et al
- 174 Research on Life Prediction of Nano-CaCO₃ Modified Concrete Based on Weibull Distribution QIAO Hongxia YANG An YANG Bo, et al
- 180 Research on Mechanical Properties of Steel Slag Concrete Based on Macro-meso Scale XUE Gang SUN Lisuo ZHAO Yujie, et al
- 187 Fractal Characteristics of Pore Structure of Aeolian Sand Pumice Concrete Subjected to Freeze-thaw Cycles XUE Huijun ZHENG Jianting ZOU Chunxia, et al
- 194 Stress-strain Constitutive Relation and Residual Strength Evaluation of Concrete After Being Subjected to High Temperatures and Spray Cooling ZHOU Xingyu ZHOU Ji CHEN Zongping
- 200 Experimental Research on Mechanical Properties of New-to-old Concrete Interface Under Direct Shear Condition YANG Peishi
- 205 Experimental Research on CFRP-concrete Two-way Composite Floor Slab Connected Without Gap Under Static Load PENG Yaping WANG Wenchao JIN Peng, et al
- 211 Anti-implosion Performances of Steel Pipes Strengthened with CFRP Sheets HUANG Hui LU Sifang ZHANG Xiang, et al
- 216 Character Interview with Ye Yiqian, the 13th Annual Conference of Industrial Architecture Branch of Architectural Society of China YE Yiqian LI Zijun

工业建筑

GONGYE JIANZHU

定价：40.00 元

ISSN 1000-8993

CN 11-2068/TU

邮发代号：2-825

了解更多资讯
请关注《工业建筑》微信

