

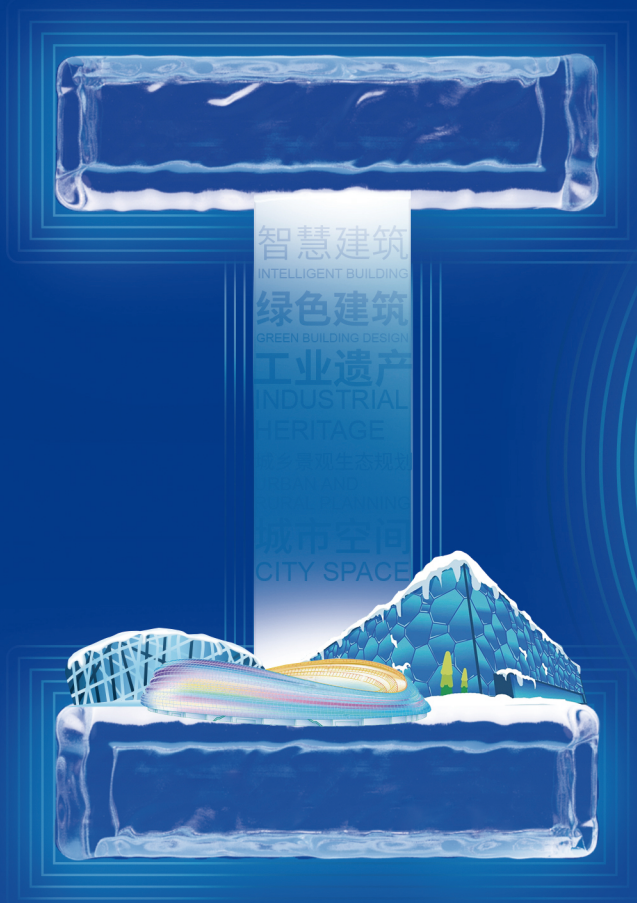
# 工业建筑

ISSN 1000-8993  
CN 11-2068/TU  
CODEN GJIAE5



INDUSTRIAL CONSTRUCTION

中文核心期刊 主办:中冶建筑研究总院有限公司  
建筑科学领域高质量科技期刊分级目录期刊



工程诊治与运维

智能建造 碳中和

碳减排

地下工程

结构

高性能材料与结构

HIGH PERFORMANCE MATERIALS AND STRUCTURES

灾害预防  
AND MITIGATION

防灾减灾

岩土及地下工程

2022.12

52卷 第599期

# Industrial Construction

## 北京门头沟王平煤矿废弃地更新

- |    |                            |     |         |
|----|----------------------------|-----|---------|
| 1  | 北京门头沟区王平煤矿废弃地更新            | 贺丽洁 | 郭星月     |
| 9  | “双碳”目标下王平煤矿废弃地的生产性更新策略探析   | 贺丽洁 | 黄震东 张玉坤 |
| 19 | “城市双修”理念下王平煤矿废弃地再生设计       | 贺丽洁 | 贺丽洁 刘佳妹 |
| 27 | 基于韧性理念的王平煤矿废弃地再生           | 贺丽洁 | 张素素 张晓巍 |
| 35 | 基于触媒理论的王平煤矿废弃地更新           | 贺丽洁 | 贺丽洁 郭星月 |
| 42 | 基于空间句法的王平煤矿废弃地多尺度空间分析和更新策略 | 贺丽洁 | 徐敏辉 徐卫国 |
| 49 | 王平煤矿废弃地水生态修复策略             | 贺丽洁 | 贺丽洁 闫雨薇 |

## 城乡规划和建筑理论

- |    |                       |     |            |
|----|-----------------------|-----|------------|
| 55 | 街区融合下的老旧小区静态交通空间特征评价  | 张彦庆 | 沈莹 李苗壮, 等  |
| 62 | 基于考古发掘的楚章华台园林基本空间特征研究 | 伍昌友 | 王 晓 王珏洲, 等 |

## 工程结构和结构防灾

- |     |                                   |     |            |
|-----|-----------------------------------|-----|------------|
| 66  | 4种结构用热断桥材料基本力学与热工性能试验             | 龚 超 | 侯兆新 梁梓豪, 等 |
| 72  | 新型箍筋装配式混凝土梁柱节点抗震性能研究              | 袁 煜 | 邹小舟 罗运海, 等 |
| 80  | 考虑阶段耗能的预制混凝土楼板拼缝节点面内受力性能试验研究      | 罗维刚 | 宋江朋 祁 盼, 等 |
| 88  | 节点张开后刚度对变摩擦耗能自复位预应力混凝土框架抗震性能的影响分析 | 黄林杰 | 曾 滨 周 臻, 等 |
| 94  | 装配式钢框架梁柱节点变形及数值模拟研究               | 马 康 | 叶锡豪 于海丰, 等 |
| 101 | 局部变形的双角钢拉杆抗拉承载力研究                 | 聂 劲 | 幸坤涛 杨建平    |
| 107 | H型钢梁-柱节点火灾后力学性能试验及有限元分析           | 刘链波 | 周 明 王新堂    |
| 113 | 新型型钢-混凝土组合柱抗震性能试验研究               | 王 朋 | 于 彬 史庆轩, 等 |
| 121 | 端板连接蜂窝梁-柱节点抗震性能试验研究               | 贾连光 | 毕 然 李秋榕    |
| 128 | 新型复式钢管混凝土墩柱轴压受力机理分析及承载力计算         | 张玉芬 | 张 燕 贾宏鑫    |
| 136 | 纤维增强材料-混凝土-钢组合矩形空心柱的低周往复荷载试验研究    | 王善章 | 张 冰 张千标, 等 |

## 岩土和地下工程

- |     |                          |     |            |
|-----|--------------------------|-----|------------|
| 142 | 自锚试桩 Q-s 曲线转换试验研究及转换式的构建 | 马海龙 | 马宇飞 应志杰    |
| 149 | 长期服役垃圾填埋场堆体稳定性动态评估       | 郭楷文 | 张坤勇 艾英钵, 等 |
| 156 | 考虑接触面影响的地下结构地震响应研究       | 于海洋 | 胡 菊 张桂彦, 等 |
| 166 | 千枚岩全风化土的抗拉特性研究           | 刘 莉 | 张 芹 颜荣涛, 等 |
| 171 | 地下连续墙成槽施工振动对邻近古建筑的影响     | 康恒一 | 戴浩宇 沈碧辉    |

## 高性能建筑材料

- |     |                   |     |            |
|-----|-------------------|-----|------------|
| 179 | 聚甲醛纤维超高强混凝土断裂性能研究 | 夏昞昊 | 杨鼎宜 高 函, 等 |
|-----|-------------------|-----|------------|

## 综 述

- |     |                      |     |         |
|-----|----------------------|-----|---------|
| 186 | 现代“Pavilion”的展示倾向和特征 | 杨 岚 | 朴正主 郭晓阳 |
|-----|----------------------|-----|---------|

## 结构安全性评定及加固

- |     |                 |     |         |
|-----|-----------------|-----|---------|
| 195 | 里氏硬度无损检测钢材牌号的试验 | 王 玲 | 杨建平 郭小华 |
|-----|-----------------|-----|---------|

## 智慧建筑与智能建造

- |     |                            |     |            |
|-----|----------------------------|-----|------------|
| 200 | 基于结构方程模型 BIM 与新一代信息技术的结合应用 | 赵 军 | 王亚栋 高 宁, 等 |
| 209 | 基于点云数据的网架结构提升变形智能监测方法      | 金钦明 | 程国忠 李东声, 等 |

## 工程实录

- |     |                     |     |            |
|-----|---------------------|-----|------------|
| 216 | 复杂山地大跨多曲拱-斜柱结构设计与分析 | 刘向刚 | 陈剑峰 杨 越, 等 |
|-----|---------------------|-----|------------|

## I 总目次

- 1 Renewal for Derelict Land of Wangping Coal Mine in Mentougou District of Beijing HE Lijie GUO Xingyue
- 9 Productive Renewal Strategies of Derelict Land of Wangping Coal Mine Meeting  
the Goal of Carbon Peaking and Carbon Neutrality HE Lijie HUANG Zhendong ZHANG Yukun
- 19 Regeneration Design for Derelict Land of Wangping Coal Mine Based on the  
Concept of Urban Renewal and Ecological Restoration HE Lijie LIU Jiamei
- 27 Regeneration of Derelict Land in Wangping Coal Mine Based on  
the Resilience Concept HE Lijie ZHANG Susu ZHANG Xiaowei
- 35 Renewal of Derelict Land in Wangping Coal Mine Based on the Catalyst Theory HE Lijie GUO Xingyue
- 42 Multi-Scale Spatial Analysis and Renewal Strategies of Derelict Land in Wangping  
Coal Mine Based on Spatial Syntax HE Lijie XU Minhui XU Weiguo
- 49 Research on Water Ecological Restoration Strategies of  
Derelict Land in Wangping Coal Mine HE Lijie YAN Yuwei
- 55 Evaluation of Static Traffic Spatial Characteristics of Old Communities  
from the Perspective of Block Integration ZHANG Yanqing SHEN Ying LI Miaozhuang, et al
- 62 Research on Spatial Features of Zhanghuatai Garden in Ancient Chu State  
Based on Archaeological Excavation WU Changyou WANG Xiao WANG Juezhou, et al
- 66 Experimental Research on Mechanical and Thermal Properties  
of Four Insulating Materials for Heat Bridge Effect GONG Chao HOU Zhaoxin LIANG Zihao, et al
- 72 Research on Seismic Performance of Prefabricated Concrete Beam-to-Column  
Joints with New Stirrups QIU Yu ZOU Xiaozhou LUO Yunhai, et al
- 80 Experimental Research on In-Plane Mechanical Characteristics of Precast Concrete  
Diaphragm Connections with Two-Stage Energy Dissipation LUO Weigang SONG Jiangpeng QI Pan, et al
- 88 Influence of Joint Stiffness After Gap Opening on Seismic Performance of Self-Centering  
Prestressed Concrete Frames with Variable Friction Dampers HUANG Linjie ZENG Bin ZHOU Zhen, et al
- 94 Research on Deformation and Numerical Simulations of Beam-to-Column  
Joints for Prefabricated Steel Frames MA Kang YE Xihao YU Haifeng, et al
- 101 Research on Tensile Capacity of Tensile Members of Double Angle  
with Local Deformation NIE Jin XING Kuntao YANG Jianping
- 107 Mechanical Property Experiments and Finite Element Analysis of Joints Between  
H-Steel Beams and Columns After Fire LIU Lianbo ZHOU Ming WANG Xintang
- 113 Experimental Research on Seismic Performance of New-Type Steel  
Reinforced Concrete Composite Columns WANG Peng YU Bin SHI Qingxuan, et al
- 121 Experimental Research on Seismic Performance of End-Plate Connections  
Between Castellated Beams and Columns JIA Lianguang BI Ran LI Qirong
- 128 Analysis and Calculations for Bearing Capacity of New Composite CFST Pier  
Columns Under Axial Compression ZHANG Yufen ZHANG Yan JIA Hongxin
- 136 Experimental Research on Seismic Properties of Rectangular FRP-Concrete-Steel  
Double-Skin Tubular Columns Under Quasi-Static Load WANG Shanzhang ZHANG Bing ZHANG Qianbiao, et al
- 142 Experimental Research on Conversion for Q-s Curves of Self-Anchored Test Piles  
and Construction of Conversion Formulas MA Hailong MA Yufei YING Zhijie
- 149 Dynamic Evaluation on Stability of Rubbish Dumps for Landfills  
in Long-Term Service GUO Kaiwen ZHANG Kunyong AI Yingbo, et al
- 156 Research on Seismic Responses of Underground Structures Considering  
Influence of Contact Surfaces YU Haiyang HU Ju ZHANG Guiyan, et al
- 166 Tensile Characteristics of Fully Weathered Phyllite Soil LIU Li ZHANG Qin YAN Rongtao, et al
- 171 Research on Influence of Construction Vibration Due to Underground Diaphragm  
Excavation on Nearby Ancient Buildings KANG Hengyi DAI Haoyu SHEN Bihui
- 179 Research on Fracture Properties of Ultra-High Strength Concrete with  
Polyformaldehyde Fibers XIA Yanghao YANG Dingyi GAO Han, et al
- 186 Exhibition Trends and Characteristics of Contemporary "Pavilions" YANG Lan PARK Jeongjoo GUO Xiaoyang
- 195 Experiments of Determining Steel Grades by Nondestructive  
Inspection of Leeb Hardness WANG Ling YANG Jianping GUO Xiaohua
- 200 Application and Development of BIM and New Generation of Information Technology  
Based on Structural Equation Model ZHAO Jun WANG Yadong GAO Ning, et al
- 209 Intelligent Deformation Monitoring for Lifting Space Frames  
Based on Point Cloud Data JIN Qinming CHENG Guozhong LI Dongsheng, et al
- 216 Design and Analysis of Long-Span Multi-Curved Arched Structures with  
Inclined Columns in Complex Mountainous Areas LIU Xianggang CHEN Jianfeng YANG Yue, et al