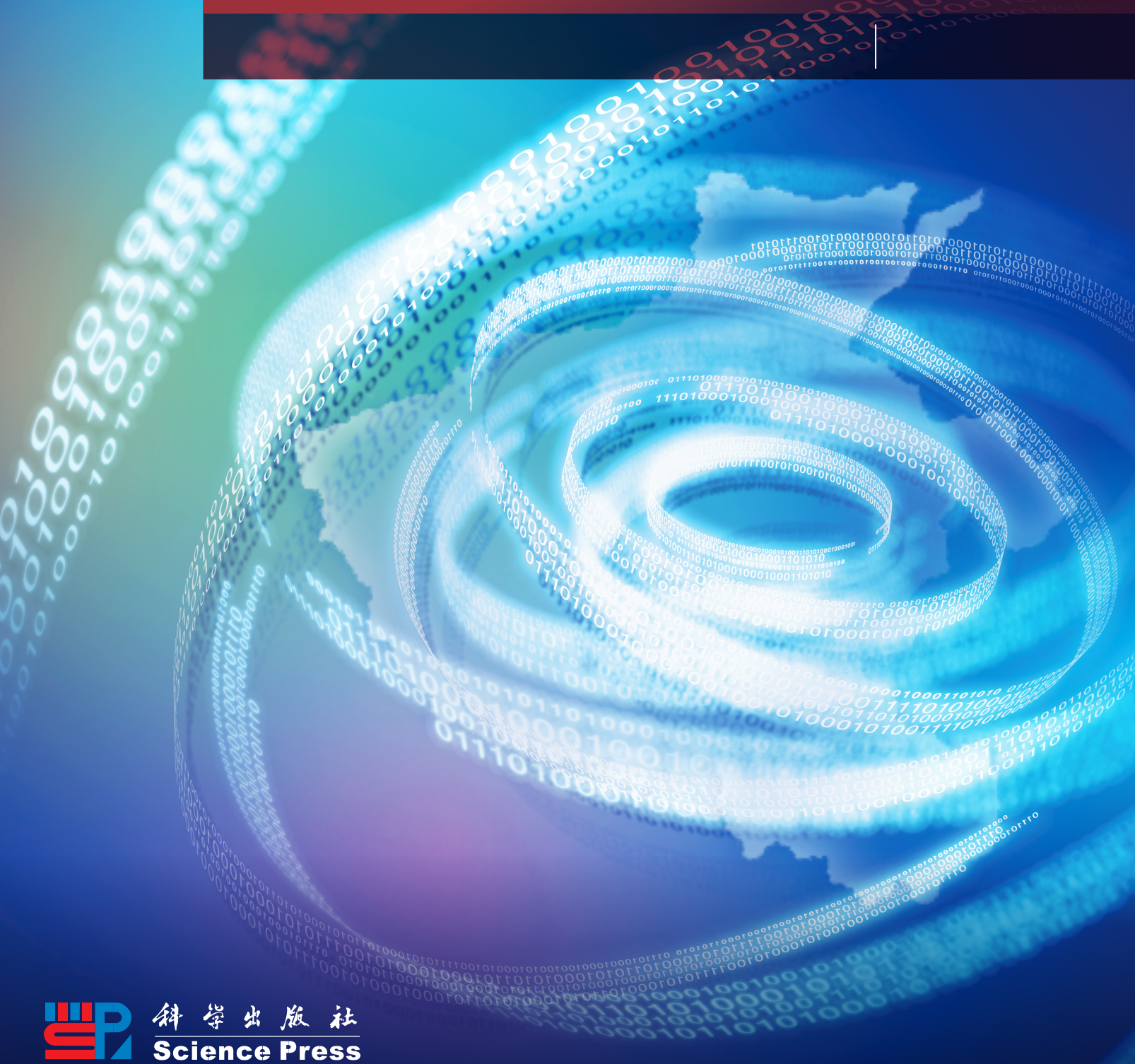




河南科学

HENAN SCIENCE



科学出版社
Science Press

河南科学

2021年 第39卷 第10期

目次

应用数学

- 世界不确定性指数与中国股市波动率预测研究 (1549)
计玉 王璐 郝建阳 张莉
- 一类PDE-ODE级联系统的指数镇定 (1557)
孟玉翠

工业技术

- 近距离爆破开挖对大坝稳定性影响分析 (1562)
韩辉 祁长青 甘飞飞 张文涛 李青朋 郭伟超
- 小波分析在地铁隧道安全监测中的应用 (1570)
熊晓峰 项鑫
- 地铁列车进站过程中活塞风对站台屏蔽门的影响——以杭州地铁为例 (1575)
董梦雪 赵帅帅

化学研究

- 桐油基水性聚氨酯的可控合成与表征 (1581)
姜垒 付阳 李珂庆 张倩 高煜 赵振芳 任志勇
- 磷脂和酶解磷脂乳化的影响因素研究 (1586)
闫俊辉 吴沁雪 王祥旭 李维琳
- 顶空-气质联用法分析4个洛阳牡丹品种的鲜花香气成分 (1592)
宁二娟 陈玲 李晓 范毅 王学方 张立攀 王永

农业科学与地球科学

- 无人机遥感技术在小麦生产中的应用综述 (1598)
杨程 闫歌 杜思梦 李向东
- 重金属胁迫下商麦5226的富集特征 (1603)
李堆淑 魏苗苗 项少锐

河南省连阴雨过程监测评估方法研究	(1608)
刘雅星 李凤秀	
兰考县新近系热储赋存规律及开发适宜性研究	(1615)
李 尧 齐玉峰 黄 烜 杨 珍 李亚美	
磷矿开挖对将军崖岩画区岩体开裂的影响分析	(1624)
李 伟 理继红 何 伟 李 明 常学文	

交通科学与建筑科学

ECC厚度对BFRP网格增强ECC复合约束RC柱偏压及抗震性能影响	(1632)
于 洋 李明政 郭道琳 张云峰	
长期浸水条件下重塑固化疏浚土中重金属浸出特性	(1642)
王海啸 夏文俊 周 欣	
基于局部均值分解和PSO-RVM-ARIMA模型的基坑变形预测研究	(1649)
王 飞	
基于NURBS曲面建模的山区公路边坡变形监测研究	(1655)
刘洋洋 张大磊 宋辛辛 王德生	

管理科学与区域经济

双因素理论下人口城镇化质量时空演变特征——以中原城市群核心区为例	(1663)
杜 锦 张 晓	
公共科技金融对区域创新绩效的影响研究——以“一带一路”沿线省市为例	(1673)
周娟美 庄影星	
金融创新与商业银行风险承担能力关系的研究	(1682)
韩 氏 张 楠	
开封市数字经济发展水平的时空评价及提升路径	(1693)
赵 芮 丁志伟	

城市水环境专题

基于GF-3号遥感影像水体信息提取的郑州市洪涝灾害监测	(1701)
王景旭 邱士可 王 正 王 超 杜 军	
城市雨水花园选址与土地适宜性评价——以河南省荥阳市为例	(1707)
吴奇原 王鑫宇 崔文妍 曹钊豪 田国行	
城市淹没风险与绿地布局耦合分析——以郑州市二七区为例	(1714)
张晓彦 王鑫宇 陶怡蕾 牛艳芳 田国行	

HENAN SCIENCE

Vol.39 No.10 2021

CONTENTS

Application Mathematics

- Research on World Uncertainty Index and Volatility Forecast of Chinese Stock Market (1549)
JI Yu, WANG Lu, HAO Jianyang & ZHANG Li
- Exponential Stabilization of a Class of PDE-ODE Cascade Systems (1557)
MENG Yucui

Industrial Technology

- Influence of Short Distance Blasting Excavation on Dam Stability (1562)
HAN Hui, QI Changqing, GAN Feifei, ZHANG Wentao, LI Qingpeng & GUO Weichao
- Application of Wavelet Analysis in Safety Monitoring of Subway Tunnel (1570)
XIONG Xiaofeng & XIANG Xin
- Influence of Piston Wind on Subway Platform Screen Door During Vehicle Entry (1575)
DONG Mengxue & ZHAO Shuaishuai

Chemistry Research

- Controllable Synthesis and Characterization of Tung Oil Based Waterborne Polyurethanes (1581)
JIANG Lei, FU Yang, LI Keqing, ZHANG Qian, GAO Yu, ZHAO Zhenfang & REN Zhiyong
- Factors Affecting the Emulsification of Phospholipids and Enzymolyzed Phospholipids (1586)
YAN Junhui, WU Qinxue, WANG Xiangxu & LI Weilin
- Aroma Components in Four Varieties of Peony Flowers from Luoyang by Headspace Gas Chromatography-Mass Spectrometry (1592)
NING Erjuan, CHEN Ling, LI Xiao, FAN Yi, WANG Xuefang, ZHANG Lipan & WANG Yong

Agricultural Science and Earth Science

- Application Review of Unmanned Aerial Vehicle Remote Sensing Technology in Wheat Production (1598)
YANG Cheng, YAN Ge, DU Simeng & LI Xiangdong
- Enrichment Characteristics of Shangmai 5226 under Heavy Metal Stress (1603)
LI Duishu, WEI Miaomiao & QING Shaokun
- Observation and Evaluation Standard of Continuous Rain Process in Henan Province (1608)
LIU Yaxing & LI Fengxiu
- The Occurrence Regularities and Development Suitability of Neogene Thermal Reservoir in Lankao County (1615)
LI Yao, QI Yufeng, HUANG Xuan, YANG Zhen & LI Yamei
- 万方数据

The Influence of Phosphate Mine Excavation on the Rock Cracking in Rock Painting Area of Jiangjun Cliff (1624)
LI Wei, LI Jihong, HE Wei, LI Ming & CHANG Xuewen

Transportation Science and Construction Science

Effect of ECC Thickness on the Eccentric Compression and Seismic Performance of BFRP Mesh Reinforced ECC Composite Restrained RC Column (1632)

YU Yang, LI Mingzheng, GUO Daolin & ZHANG Yunfeng

Heavy Metals' Leaching Behavior of Remolded Stabilized Dredged Sediment under Long-term Immersion (1642)

WANG Haixiao, XIA Wenjun & ZHOU Xin

Prediction of Foundation Pit Deformation Based on Local Mean Decomposition and PSO-RVM-ARIMA Model (1649)

WANG Fei

Research on Deformation Monitoring of Mountain Highway Slope Based on NURBS Surface Modeling (1655)

LIU Yangyang, ZHANG Dalei, SONG Xinxin & WANG Desheng

Management Science and Regional Economy

The Spatial-Temporal Evolution Characteristics of Population Urbanization Quality Based on Two-factor Theory (1663)

DU Jin & ZHANG Xiao

Impacts of Public Technology Finance on Regional Innovation Performance: Taking Provinces and Cities along the "Belt and Road" as Examples (1673)

ZHOU Juanmei & ZHUANG Yingxing

The Relationship Between Financial Innovation and Commercial Bank's Risk-taking Ability (1682)

HAN Min & ZHANG Nan

Spatio-temporal Evaluation of Digital Economy Development Level and its Promotion Path in Kaifeng City (1693)

ZHAO Rui & DING Zhiwei

Column of Urban Water Environment

Flood Disaster Monitoring Based on Water Body Extraction of GF-3 Image in Zhengzhou (1701)

WANG Jingxu, QIU Shike, WANG Zheng, WANG Chao & DU Jun

Site Selection and Land Suitability Evaluation of Urban Rain Garden: Taking Xingyang City, Henan Province as an Example (1707)

WU Qiyuan, WANG Xinyu, CUI Wenyan, CAO Zhaohao & TIAN Guohang

Coupling Analysis of Urban Inundation Risk and Green Space Layout: Taking Erqi District, Zhengzhou City as an Example (1714)

ZHANG Xiaoyan, WANG Xinyu, TAO Yilei, NIU Yanfang & TIAN Guohang