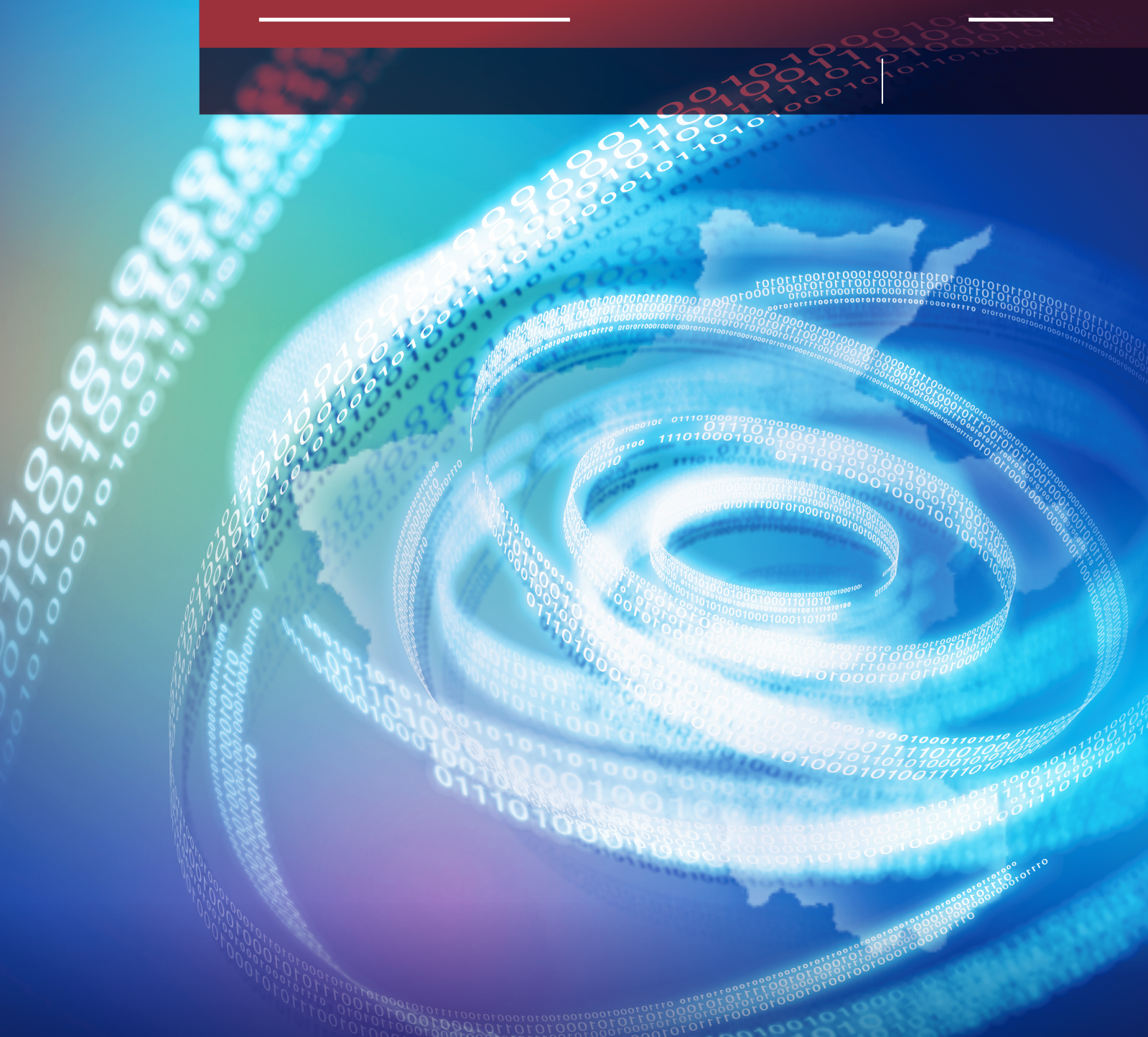




河南科学



科学出版社
Science Press

河南科学

2021年 第39卷 第5期

目次

数学研究与信息科学

$\tan\left(\frac{\phi(\xi)}{2}\right)$ -展开法和立方非线性 Schrödinger 方程精确解 (689)

马致远 马志民

基于图像回归的 SAR 图像变化检测 (696)

赵锐

110 kV 共享铁塔安全运检技术参数研究 (703)

张准 彭勇 刘凯 雷兴列 张瑞卿

化学研究与农业科学

V 形硅纳米球团簇的多极散射分析 (710)

何颖君 杨俊桦 陈丽芳 陈星源 徐祥福 赖国霞

不同种源山桐子叶绿素荧光特征差异分析 (715)

蔡齐飞 王帅 徐自恒 宋雨 刘震

结合 SFLA-XGBoost 模型与高光谱的土壤有机质含量预测 (720)

杨素妨

落叶阔叶混交林中氮沉降对土壤可溶性碳的影响 (729)

黄日昌 高学通 崔洋 牛继强

建筑科学与交通科学

钢筋混凝土框架结构火灾试验的相似理论数值模拟验证 (734)

李绮玉 张海燕

钢筋偏心的灌浆套筒连接件拉伸受力性能研究 (742)

张淞棋 郑小红 宋琢

三类箱梁横向内力计算及参数分析 (751)

赵甜

集料模量对钢桥面铺装层间剪切疲劳影响的细观数值模拟	(757)
魏 鹏 王思琦 刘 云	
粗粒土 K_0 固结与等压固结三轴试验比较	(765)
赵 彤 朱俊高 孙明辉	
危险品公铁联运模糊多目标路径优化研究	(772)
孙 岩 虞 楠 董坤祥	

水利工程与环境科学

小浪底水库运行以来黄河影响带地下水位埋深变化	(782)
王 利 焦红军 杨德贵 王 宽	
长江干线生态航道建设探析	(789)
陈振武 严 军 蔡显赫 周祖昊	
集中荷载作用下高强钢筋混凝土深梁受剪承载力影响因素分析	(795)
解 伟 郑李昂 李树山 司先洋 张光耀	
贾鲁河景观变化与径流耦合关系研究	(802)
王 宪 冯 辉 周 延 刘 欣	

管理科学与城市科学

推动长江经济带建设对沿线区域经济发展的影响——基于DID模型的实证研究	(814)
喇瑞萍 胡怀敏	
服务补救中顾客参与行为意向的前因研究	(821)
刘 勇 叶丽萍	
基于文本情感的投资者情绪与股指关系研究	(829)
李 珊 丁 宇 陈妙苗 郑 晨	
基于S型效用函数的农业旱灾脆弱性评估——以河南省为例	(838)
郝慧慧 朱涵钰 李小鹏	
互联网+背景下绿色农产品供应链激励策略研究	(846)
米力阳 尚春燕	
东北三省特色小镇空间结构特征及影响因素研究	(852)
吕 波 王 辉 何 悦	

HENAN SCIENCE

Vol.39 No.5 2021

CONTENTS

Mathematics Research and Information Science

The $\tan\left(\frac{\phi(\xi)}{2}\right)$ -Expansion Method and the Exact Solutions of Cubic Nonlinear Schrödinger Equations (689)

MA Zhiyuan & MA Zhimin

Change Detection in SAR Images Based on Image Regression (696)

ZHAO Rui

Research on Technical Parameters of Safe Operation and Maintenance on 110 kV Shared Towers (703)

ZHANG Zhun, PENG Yong, LIU Kai, LEI Xinglie & ZHANG Ruiqing

Chemistry Research and Agricultural Science

Multipole Scattering Analysis of a V-shaped Cluster of Silicon Nano-spheres (710)

HE Yingjun, YANG Junhua, CHEN Lifang, CHEN Xingyuan, XU Xiangfu & LAI Guoxia

Comparison of Chlorophyll Fluorescent Characteristics of *Idesia Polycarpa* Maxim. from Different Provenances (715)

CAI Qifei, WANG Shuai, XU Ziheng, SONG Yu & LIU Zhen

Prediction of Soil Organic Matter Content Based on SFLA-XGBoost Model and Hyperspectral (720)

YANG Sufang

Effects of Simulated Nitrogen Deposition on Soil Dissolved Carbon in Deciduous Broad-leaved Forest (729)

HUANG Richang, GAO Xuotong, CUI Yang & NIU Jiqiang

Construction Science and Transportation Science

Numerical Simulation Verification on Similarity Theory for the Fire Tests of RC Frame Structure (734)

LI Qiyu & ZHANG Haiyan

The Tensile Performance of Grouting Sleeve Connector with Eccentric Rebar (742)

ZHANG Songqi, ZHENG Xiaohong & SONG Zhuo

Calculation and Parameter Analysis on Transverse Internal Force of Three Types of Box Girder (751)

ZHAO Tian

Microscopic Numerical Simulation of the Influence of Aggregate Modulus on Interlayer Shear Fatigue of Steel

Deck Pavement (757)

WEI Peng, WANG Siqi & LIU Yun

万方数据

- Comparison of K_0 Consolidation and Isobaric Consolidation Triaxial Test of Coarse Grained Soil (765)
 ZHAO Tong, ZHU Jungao & SUN Minghui
- Fuzzy Multi-Objective Optimization for the Hazardous Materials Road-Rail Multimodal Routing Problem (772)
 SUN Yan, YU Nan & DONG Kunxiang

Hydraulic Engineering and Environmental Science

- The Variation of Buried Depth of Groundwater in the Affected Zone of the Yellow River Since the Operation of Xiaolangdi Reservoir (782)
 WANG Li, JIAO Hongjun, YANG Degui & WANG Kuan
- Analysis on Ecological Channel Construction of the Yangtze River Main Route (789)
 CHEN Zhenwu, YAN Jun, CAI Xianhe & ZHOU Zuhao
- Influencing Factors on Shear Capacity of High-Strength Reinforced Concrete Deep Beams (795)
 XIE Wei, ZHENG Li'ang, LI Shushan, SI Xianyang & ZHANG Guangyao
- Study on Coupling Relationship Between Landscape Change and Runoff of Jialu River (802)
 WANG Xian, FENG Hui, ZHOU Yan & LIU Xin

Management Science and Urban Science

- The Impact of Promoting the Construction of Yangtze River Economic Belt on the Regional Economic Development Along the Line: Empirical Research Based on DID Model (814)
 LA Ruiping & HU Huaimin
- The Antecedents of Customer Participation Behavior Intention in Service Recovery (821)
 LIU Yong & YE Liping
- Research on the Relationship Between Investor Sentiment and Stock Index Based on Textual Emotion (829)
 LI Shan, DING Yu, CHEN Miaomiao & ZHENG Chen
- Assessment of Agricultural Drought Vulnerability Based on S-shaped Utility Function: A Case Study of Henan Province (838)
 HAO Huihui, ZHU Hanyu & LI Xiaopeng
- Research on Incentive Strategies of Green Agricultural Product Supply Chain under the Background of Internet+ (846)
 MI Liyang & SHANG Chunyan
- Spatial Structure Characteristics and Influencing Factors of Characteristic Towns of Three Provinces in Northeast China (852)
 LYU Bo, WANG Hui & HE Yue