

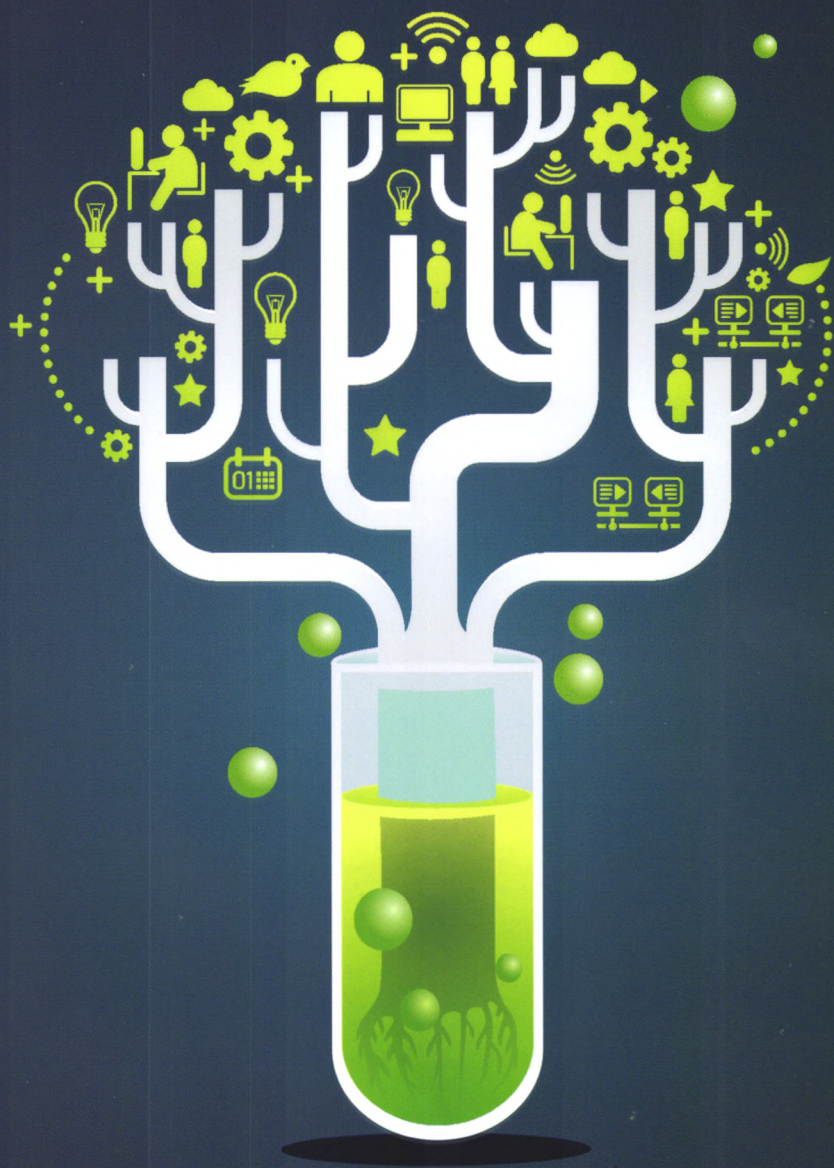
# 湖南农业科学

HUNAN AGRICULTURAL SCIENCES

2014 12 | 上半月刊

全国优秀农业期刊 · 湖南省一级期刊 · 湖南省优秀期刊

刊号：ISSN1006-060X CN43-1099/S 广告经营许可证：4301004000057



湖南农业科学  
HUNAN AGRICULTURAL SCIENCES

万方数据

地址(Add):湖南省长沙市芙蓉区远大二路892号湖南省农业信息与工程研究所  
 电话(Tel):+86-731-84691322 传真(Fax):+86-731-84693060 邮编(PC):410125  
 邮箱(E-mail):hnnkx@vip.163.com 网址(Web site):www.hnnkx.com

# 湖南农业科学

2014年第23期(总第350期)

## 目次

### 生理生化·遗传育种·耕作栽培

- 水稻冬闲田白菜薹免耕栽培效益研究 ..... 袁祖华,高述华,丁茁萋,等(1)
- 不同烤烟品种幼苗期生物学性状和生理特性研究 ..... 刘巧真,郭芳阳,闫小毛,等(3)
- 苯达松敏感基因遗传规律及其在水稻制种中应用的研究进展 ..... 张逸妍,彭伟正,杨震,等(5)
- 野生猕猴桃 LD-1 的耐涝性研究 ..... 杨江平,向小奇,唐玲玲,等(9)
- 不同烤烟新品系在湘南烟区特征特性研究 ..... 石锦辉,单雪华,黄银章,等(11)
- 低温胁迫对两种紫花苜蓿膜脂脂肪酸含量的影响 ..... 王柏,苑芷茜,李东双,等(15)
- 生理活性物质对遭遇低温逆境烟草抗性生理指标的影响 ..... 谢会雅,史端甫,张红兵,等(18)
- 蓝莓盆栽技术研究初报 ..... 吴同斌,李丽辉,吴睿,等(22)
- 不同种植密度与采收时间对烟叶产质量的影响 ..... 周以波,肖佳冰,卢迪,等(24)
- 茶树蛋白质组学研究进展 ..... 程晓梅,黄建安,刘仲华,等(28)

### 土壤肥料·植物保护·环境气象

- 土地整理对湘西烟田土壤养分的影响 ..... 吴海勇,李跃平,田峰,等(32)
- 邵阳县烟稻轮作区土地整理后植烟土壤肥力状况 ..... 黄渤,张杨珠,张鹏博,等(35)
- 麻阳县紫色土资源利用与开发 ..... 胡建玉,莫玉香,张长水,等(40)
- 利用隶属函数法对不同花生品种的抗旱性评价 ..... 张俊,汤丰收,刘娟,等(40)
- 长江中下游水稻品种白叶枯病抗性评价 ..... 高杜娟,唐善军,陈友德,等(46)
- 隆回烟区烤烟生育期气温及降水特征分析 ..... 程昌合,陈颀,江智敏,等(49)
- 生物质原料配比及外源物添加对牛粪产沼气效果的影响 ..... 陈亚宇,黄凤球,孙继民,等(53)
- 密度和钾肥互作对烤烟化学成分和经济性状的影响 ..... 缪志建,朱列书(56)
- 24%咪鲜胺·噁唑酰胺悬浮剂对水稻纹枯病的防治效果 ..... 吉春明,刘建凤,张新建(58)

### 园林园艺·加工贮藏·休闲农业

- 基于 AHP 的扬州私家园林价值评价体系构建研究 ..... 杨恒,陈宇(60)
- 浏阳市长兴湖滨水景观设计 ..... 易韵婷,龙岳林,唐琳茜,等(63)
- 观赏竹在校园景观中的应用探讨 ..... 唐琳茜(66)
- 茶树芽叶颜色与发酵性能相关关系初探 ..... 段继华,雷雨,罗意,等(68)

### 畜牧兽医·水产养殖·产业研究

- 紫贻贝中碱性磷酸酶动力学特性研究 ..... 黄振斌,于贞(72)
- 基于 Cytb 与 D-loop 的罗非鱼选育群体遗传结构对比分析 ..... 颜晓勇,钟金香,李思发(74)

广告 ..... (封二、68、封三、封四)

# HUNAN AGRICULTURAL SCIENCES

N0.23(Tot.350)2014

## CONTENTS

Experiment on No-Tillage Cultivation of Chinese Cabbage in Rice Winter Fallow Fields	YUAN Zu-hua, GAO Shu-hua, DING Zhuo-yi, et al(1)
Biological and Physiological Characters of Different Flue-Cured Tobacco Varieties in Seedling Period	LIU Qiao-zhen, GUO Fang-yang, YAN Xiao-mao, et al(3)
Research Progress in Bentazon Sensitive Genic Inheritance and Its Application in Rice Seed Production	ZHANG Yi-yan, PENG Wei-zheng, YANG Zhen, et al(5)
Waterlogging Tolerance of Wild Kiwifruit Variety LD-1	YANG Jiang-ping, XIANG Xiao-qi, TANG Ling-ling, et al(9)
Characteristics of Different New Tobacco Strains in Southern Hunan	SHI Jin-hui, SHAN Xue-hua, HUANG Yin-zhang, et al(11)
Effect of Low Temperature Stress on Membrane Fatty Acid Content of Two Alfalfa Varieties	WANG Bai, YUAN Zhi-qian, LI Dong-shuang, et al(15)
Effects of Physiological Activity Substances on Resistance Physiological Index of Tobacco Plants During Cold Stress	XIE hui-ya, SHI Duan-fu, ZHANG Hong-bing, et al(18)
Preliminary Report on Blueberry Plant Pot Culture Technical Research Experiment	WU Tong-bin, LI Li-hui, WU Rui, et al(22)
Influence of Different Planting Density and Harvesting Time on Yield and Quality of Tobacco Leaves	ZHOU Yi-bo, XIAO Jia-bing, LU Di, et al(24)
Research Progress in Tea Proteomics	CHENG Xiao-mei, HUANG Jian-an, LIU Zhong-hua, et al(28)
Effects of Tobacco Field Consolidation on Its Soil Nutrients in West Hunan	WU Hai-yong, LI Yue-ping, TIAN Feng, et al(32)
Fertility Status of Tobacco-Planting Soil after Land Consolidation under Tobacco-Rice Rotation System in Shaoyang	HUANG Bo, ZHANG Yang-zhu, ZHANG Peng-bo, et al(35)
Development and Utilization of Purple Soil Resources in Mayang	HU Jian-yu, MO Yu-xiang, ZHANG Chang-shui, et al(40)
Evaluations on Drought-Resistance Traits of Different Peanut Varieties by Subordinate Function Values Analysis	ZHANG Jun, TANG Feng-shou, LIU Juan, et al(42)
Bacterial Blight Resistance of Rice Varieties in Regional Trials of Middle and Lower Reaches of Yangtze River	GAO Du-juan, TANG Shan-jun, CHEN You-de, et al(46)
Analysis of Air Temperature and Rainfall Characteristics during Flue-Cured Tobacco Growth in Longhui Tobacco Area	CHENG Chang-he, CHEN Yi, JIANG Zhi-min, et al(49)
Influence of Different Biomass Raw Materials Formula and Exogenous Addition on Biogas Production	CHEN Ya-yu, HUANG Feng-qiu, SUN Ji-min, et al(53)
Interaction between Potash Application Rate and Planting Density on Chemical Composition and Economic Characters of Flue-Cured Tobacco	MIU Zhi-jian, ZHU Lie-shu(56)
Control Effects of 24% Prochloraz-Thifluzamide Suspending Agent on Rice Sheath Blight	JI Chun-ming, LIU Jian-feng, ZHANG Xin-jian(58)
Value Evaluation System Construction Based on Analytic Hierarchy Process (AHP) of Yangzhou Private Garden	YANG Heng, CHEN Yu(60)
Waterfront Landscape Design of Changxin Lake in Liuyang	YI Yun-ting, LONG Yue-lin, TANG Lin-qian, et al(63)
Application of Ornamental Bamboo in Campus Landscape	TANG Lin-qian(66)
Relationship between Color and Fermentation Performance of Tea Buds	DUAN Ji-hua, LEI Yu, LUO Yi, et al(68)
Dynamic Characteristics of Alkaline Phosphatase from <i>Mylitis edulis</i>	HUANG Zhen-e, YU Zhen(72)
Comparison of Genetic Structure of Nile Tilapia by Cytb and D-loop Gene	XIE Xiao-yong, ZHONG Jin-xiang, LI Si-fa(74)



水稻杂交种  
HYBRID RICE SEED

好种好收成

源于广阔天地

袁隆平

# Y两优837



**产量更高:** 2012年参加湖南桃源中稻品比试验, 产量达835.1 kg/667m<sup>2</sup>, 排名第一。湖南隆回县百亩示范最高产量达903 kg/667m<sup>2</sup>。

**抗性更强:** 该品种生长势强、根系发达, 茎叶茂盛, 抗旱性能强, 抗高温、耐低温, 耐肥抗倒。稻瘟病抗性较好。

**米质更优:** 整精米率68.6%, 垩白度2.8%, 外观品质优良, 米饭柔软可口, 食味佳。



# 深两优876

**产量更高:** 2012年在湖南桃源、隆回, 江西吉安、南昌县试种, 增产效果显著。平均产量847.4 kg/667m<sup>2</sup>, 最高达910 kg/667m<sup>2</sup>。

**抗性更强:** 该品种根系发达, 茎秆粗壮, 抗旱性能强, 抗高温耐低温, 高度耐肥抗倒。

**米质更优:** 该品种整精米率66.2%~71.7%, 垩白度3.0%, 直链淀粉含量16.1%, 外观品质优良, 米饭柔软可口, 达国家三级米标准。

**湖南广阔天地科技有限公司**

地址: 长沙市开福区教育街66号 长沙市长沙县黄花镇黄花路93号(仓库)

电话/传真: 0731-86990088

网址: [www.hngktd.com](http://www.hngktd.com) 邮编: 410005

ISSN 1006-060X



万方数据