

中国科技核心期刊  
中文核心期刊  
中国科学引文数据库 (CSCD) 核心期刊  
中国期刊全文数据库 (中国知网) 收录期刊  
中国数字化期刊群 (万方数据) 收录期刊  
中文科技期刊数据库 (维普资讯) 收录期刊  
中国石油文摘来源期刊  
美国石油文摘来源期刊

海相油气地质

第二十三卷  
第二期

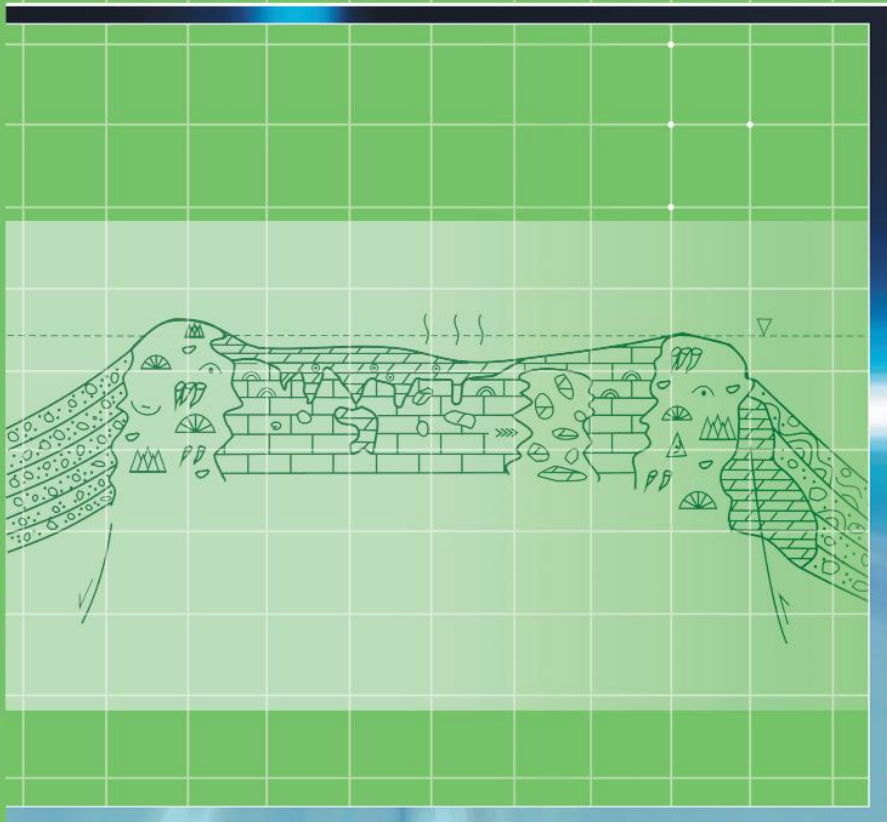
2

2018

Marine Origin Petroleum Geology  
**海相油气地质**

Vol. 23

第二十三卷



二〇一八年四月

# 海相油气地质(季刊)

HAIXIANG YOUQI DIZHI

## 目次

第23卷第2期 2018年4月出版

### 讨论·探索

- 四川盆地德阳—安岳台内裂陷与震旦系勘探方向  
..... 周进高, 沈安江, 张建勇, 郝毅, 谷明峰, 李文正 1
- 深层碳酸盐岩原位模拟实验及勘探启示——以川东北地区二叠系为例 ..... 王明筏, 陈超 10
- 多种流体体系与砂岩水岩反应的实验研究 ..... 朱翔, 陈倩倩, 伏美燕, 张哨楠, 尤丽, 张迎朝 17
- 利用油包裹体荧光光谱多参数划分油气充注幕次——以塔里木盆地麦盖提斜坡巴什托构造带  
石炭系为例 ..... 斯尚华, 陈红汉, 袁丙龙, 雷明珠, 陈扬 25

### 综述·评价

- 页岩的甲烷吸附能力影响因素综述 ..... 马斌玉, 徐守余, 陈麦雨, 张江晖 31

### 沉积·储层

- 四川盆地二叠系栖霞组、茅口组白云岩储层特征、成因和分布  
..... 胡安平, 潘立银, 郝毅, 沈安江, 谷明峰 39
- 普光气田新类型储层——飞仙关组砾屑碳酸盐岩的沉积特征及模式  
..... 周凯, 王美格, 尹青, 黄佩 53
- 伊拉克西古尔纳油田中白垩统 Mishrif 组碳酸盐岩储层特征及主控因素  
..... 姚子修, 刘航宇, 田中元, 郭睿, 杨迪 59
- 湘西北地区下志留统龙马溪组页岩矿物成分特征及意义 ..... 刘亢, 曹代勇, 林中月, 王玉芳 70

### 盆地·构造

- 鄂尔多斯盆地西缘横山堡区块断裂构造特征及其控藏模式  
..... 张璐, 何峰, 陈桂华, 杜江峰, 黄众 77
- 印尼打拉根盆地油气成藏特征与主控因素 ..... 郭志峰, 胡孝林, 郭刚, 李冬 83

### 技术·应用

- 深水重力流复合下切水道体系精细地质表征与建模——以西非尼日尔三角洲盆地  
OML130 区块为例 ..... 卜范青, 张旭 90

### 其他

作者须知(封4)

期刊基本参数: CN 33-1328/P\*1996\*q\*16\*96\*zh\*P\*¥30.00\*1000\*12\*2018-04

# MARINE ORIGIN PETROLEUM GEOLOGY (Quarterly)

http://hxyqdz.cnmanu.cn

## CONTENTS

Vol. 23 No. 2 Apr. 2018

|   |    |
|---|----|
| Deyang-Anyue Interplatform Rift in Sichuan Basin and Its Direction of Exploration in Sinian<br>..... Zhou Jin'gao, Shen Anjiang, Zhang Jianyong, Hao Yi, Gu Mingfeng, Li Wenzheng   | 1  |
| In-situ Simulations and Experiments of Deep Carbonate Rocks and Its Implications for Exploration:<br>Take Permian Samples in Northeast Sichuan as an Example ..... Wang Mingfa, Chen Chao   | 10 |
| Experimental Study on Water-rock Reaction of Sandstone in Various Fluid Systems<br>..... Zhu Xiang, Chen Qianqian, Fu Meiyuan, Zhang Shaonan, You Li, Zhang Yingzhao  | 17 |
| Identification of Hydrocarbon Charging Events by Using Fluorescence Spectrum Multiparameter<br>of Oil Inclusions: A Case Study of Carboniferous in Bashituo Structural Belt of Markit Slope<br>of Tarim Basin..... Si Shanghua, Chen Honghan, Yuan Binglong, Lei Mingzhu, Chen Yang | 25 |
| An Overview of Influence Factors of Methane Adsorption Capacity In Shale<br>..... Ma Binyu, Xu Shouyu, Chen Maiyu, Zhang Jianghui   | 31 |
| Origin, Characteristics and Distribution of Dolostone Reservoir in Qixia Formation and Maokou Formation,<br>Sichuan Basin, China ..... Hu Anping, Pan Liyin, Hao Yi, Shen Anjiang, Gu Mingfeng  | 39 |
| Sedimentary Characteristics and Depositional Model of A New Type of Reservoir in Feixianguan Formation,<br>Puguang Gas Field ..... Zhou Kai, Wang Meige, Yin Qing, Huang Pei  | 53 |
| Characteristics and Main Controlling Factors of Carbonate Reservoir of the Middle Cretaceous<br>Mishrif Formation in the West Qurna Oilfield, Iraq<br>..... Yao Zixiu, Liu Hangyu, Tian Zhongyuan, Guo Rui, Yang Di   | 59 |
| Characteristics and Significance of Mineral Compositions of Shale in Lower Silurian Longmaxi<br>Formation, Northwestern Hu'nan ..... Liu Kang, Cao Daiyong, Lin Zhongyue, Wang Yufang   | 70 |
| Characteristics of Fault and Accumulation Models in Hengshanbu Block on the West Edge<br>of Ordos Basin ..... Zhang Lu, He Feng, Chen Guihua, Du Jiangfeng, Huang Zhong   | 77 |
| Hydrocarbon Accumulation and Main Control Factors in Tarakan Basin, Indonesia<br>..... Guo Zhifeng, Hu Xiaolin, Guo Gang, Li Dong   | 83 |
| Geological Modeling of Combined Incised-Channel System in Deep-water Sediment Gravity Flow Deposits:<br>A Case of Block OML130 in Niger Delta Basin, West Africa ..... Bu Fanqing, Zhang Xu   | 90 |