

ISSN 1672-9854

CN 33-1328/P

中国科技核心期刊  
中文核心期刊  
中国科学引文数据库 (CSCD) 来源期刊  
中国期刊全文数据库 (中国知网) 收录期刊  
中国数字化期刊群 (万方数据) 收录期刊  
中文科技期刊数据库 (维普资讯) 收录期刊  
美国石油文摘来源期刊

1

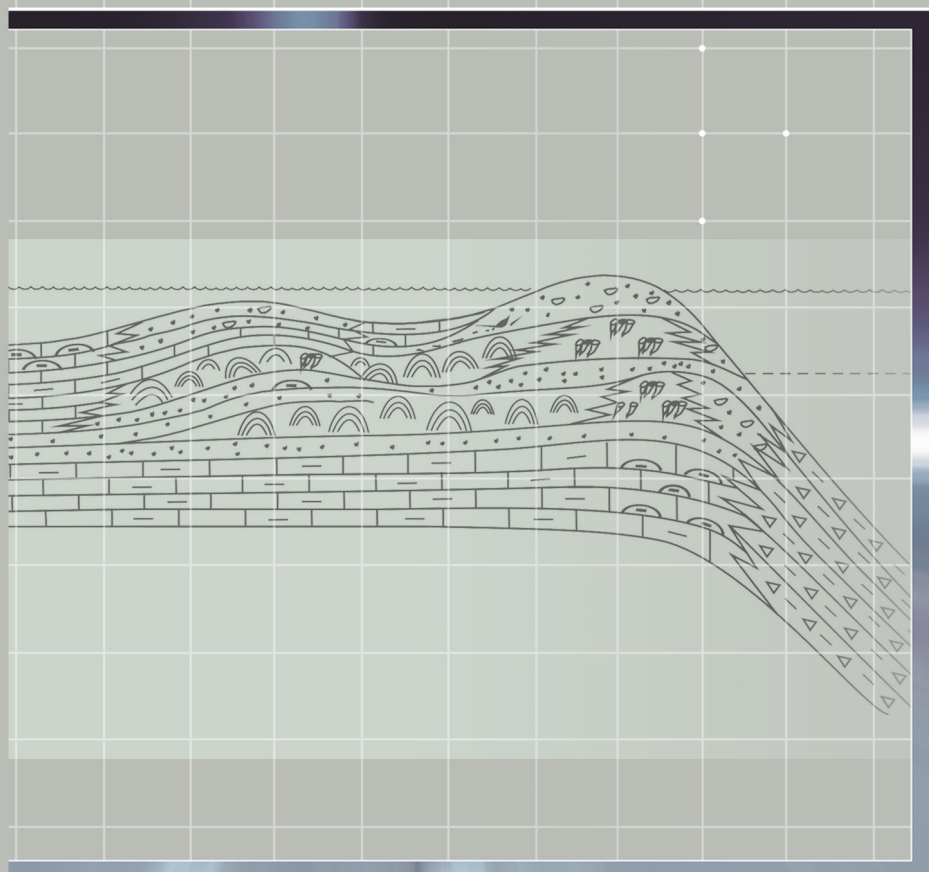
2023

Marine Origin Petroleum Geology

# 海相油气地质

Vol. 28

第28卷



中国石油集团杭州地质研究所有限公司 主办

# 海相油气地质 (季刊)

## HAIXIANG YOUQI DIZHI

# 目次

第28卷 第1期 2023年3月25日出版

### 沉积·储层

四川盆地中部蓬莱地区灯二段沉积微相演化及气藏综合评价 ..... 张本健, 钟原, 周刚, 严威, 李堃宇, 和源, 赵立可, 龙虹宇, 吕文正, 乔艳萍	1
四川盆地龙女寺地区龙王庙组碳酸盐岩岩溶地层测井响应特征 ..... 杨琴琴, 司马立强, 王亮, 郭宇豪, 张浩, 温登峰	11
陆坡逆冲-变换构造对重力流水道的控制作用——以西非陆坡某区中新统深水沉积体系为例 ..... 蔺鹏	22
中东伊拉克 A 油田 Khasib 组海相花斑状非均质灰岩储层特征及成因机制 ..... 张文旗, 刘达望, 张磊夫, 邓亚, 许家铨, 王宇宇	33
巴西 M 油田白垩系湖相碳酸盐岩沉积相类型及分布 ..... 黄继新, 徐芳, 齐梅, 童强, 郭松伟, 罗强	45

### 讨论·探索

滇黔北地区下寒武统热水沉积烃源岩发育特征 ..... 程青松, 石阳志, 章超, 王鑫, 季永承, 王紫琪	55
巴西桑托斯盆地 CO <sub>2</sub> 分布规律及控制因素 ..... 王朝锋, 范国章, 杨柳, 王红平, 左国平, 张勇刚, 庞旭, 王思文	65

### 勘探评价

致密砂岩储层构造裂缝特征及地质建模——以塔里木盆地库车坳陷大北 12 气藏为例 ..... 王珂, 张荣虎, 李宝刚, 王俊鹏, 宋丙慧, 曾庆鲁, 张知源, 黄箐璇	72
珠江口盆地珠 III 坳陷文昌 9-7 转换斜坡带构造特征与控藏机制 ..... 王真真, 胡林, 王世朝, 雷明珠, 李明, 胡潜伟, 刘凯	83

### 盆地·构造

万安盆地构造特征及其对油气分布的控制 ..... 张亚震, 裴健翔, 甘军, 杜艺可, 史德锋	94
--	----

### 开发地质

珠江口盆地陆丰 13-1 油田恩平组产层电阻率下限计算方法及应用 ..... 袁瑞, 刘成林, 顾振宇, 胡求红, 梁全权, 周开全, 王泽宇	105
--	-----

### 其他

《海相油气地质》作者须知 (封4)

# MARINE ORIGIN PETROLEUM GEOLOGY (Quarterly)

<http://hxyqdz.cnmanu.cn>

## CONTENTS

Vol. 28 No. 1 Mar. 2023

Sedimentary microfacies evolution and comprehensive evaluation of gas reservoir of the Dengying Member 2 in Penglai area, central Sichuan Basin.....	ZHANG Benjian, ZHONG Yuan, ZHOU Gang, YAN Wei, LI Kunyu, HE Yuan, ZHAO Like, LONG Hongyu, Lü Wenzheng, QIAO Yanping	1
Logging response characteristics of carbonate karst strata of Longwangmiao Formation in Longnvsi area, Sichuan Basin .....	YANG Qinqin, SIMA Liqiang, WANG Liang, GUO Yuhao, ZHANG Hao, WEN Dengfeng	11
Control of thrust-transfer structures on gravity flow channels in continental slope: a case study of Miocene deep-water depositional systems in a continental slope, West Africa .....	LIN Peng	22
Characteristics and genetic mechanism of marine nodular limestone reservoirs of Khasib Formation in Iraq A Oilfield, Middle East .....	ZHANG Wenqi, LIU Dawang, ZHAGN Leifu, DENG Ya, XU Jiacheng, WANG Yuning	33
Types and distribution of sedimentary facies of the Cretaceous carbonate reservoirs in the M Oilfield of Santos Basin, Brazil .....	HUANG Jixin, XU Fang, QI Mei, TONG Qiang, GUO Songwei, LUO Qiang	45
Characteristics of the Lower Cambrian hydrothermal sedimentary source rocks in northern Yunnan and Guizhou .....	CHENG Qingsong, SHI Yangzhi, ZHANG Chao, WANG Xin, JI Yongcheng, WANG Ziyang	55
Distribution law and control factors of CO <sub>2</sub> in Santos Basin, Brazil .....	WANG Chaofeng, FAN Guozhang, YANG Liu, WANG Hongping, ZUO Guoping, ZHANG Yonggang, PANG Xu, WANG Siwen	65
Characteristics and geological modeling of structural fractures in tight sandstone reservoir: taking Dabei-12 gas reservoir in Kuqa Depression, Tarim Basin as an example .....	WANG Ke, ZHANG Ronghu, LI Baogang, WANG Junpeng, SONG Binghui, ZENG Qinglu, ZHANG Zhiyuan, HUANG Qingxuan	72
Structural characteristics and reservoir-control mechanism of Wenchang 9-7 transfer slope zone in Zhu III Depression, Pearl River Mouth Basin .....	WANG Zhenzhen, HU Lin, WANG Shichao, LEI Mingzhu, Li Ming, HU Qianwei, LIU Kai	83
Tectonic characteristics and its control on hydrocarbon accumulation in Wan 'an Basin .....	ZHANG Yazhen, PEI Jianxiang, GAN Jun, DU Yike, SHI Defeng	94
Calculation and application of resistivity lower limit of pay zone of Enping Formation in Lufeng 13-1 Oilfield, Pearl River Mouth Basin .....	YUAN Rui, LIU Chenglin, GU Zhenyu, HU Qiuhong, LIANG Quanquan, ZHOU Kaijin, WANG Zeyu	105