



华中  
建筑

HUAWZHONG  
ARCHITECTURE

10/2015

ISSN 1003-739X



9 771003 739051



ISSN 1003-739X CN 42-1228/TU

2015/10

http://www.hzjz.cc/



\*标记为基金、科研项目类成果

10

### 城市空间营造专题

Spacial Topic of Urban Space Yingzao

- 1 西北诸流域：武威城市空间营造  
The Northwest Basins: Urban Space Yingzao of Wuwei City

赵冰 Zhao Bing

### 冯纪忠研究

Feng Jizhong Research

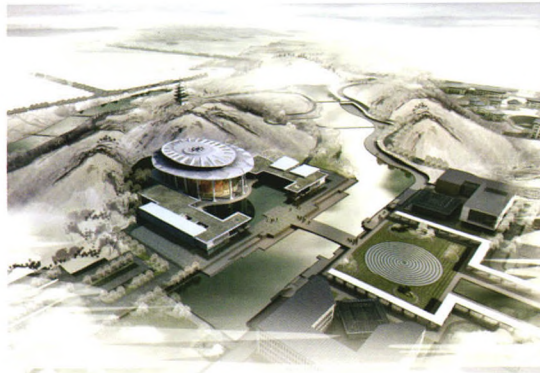
- 6 诗化建筑（园林）哲人：冯纪忠  
——品读《冯纪忠百年诞辰研究文集》之二<sup>①</sup>  
Poetic Philosopher in Architecture and Landscape:  
Feng Jizhong Reading of "The Centennial of Feng Jizhong: A Research Anthology" II

顾孟潮 Gu Mengchao

### 先锋论坛

Comments Form

- 11 XS与L——上海当代都市语境的建筑反思  
XS and L: Architecture Introspection of the Shanghai City Context  
刘津瑞 Liu Jinrui 冯琼 Feng Qiong
- 15 森佩尔的“风格”理论(I)：建筑的基本形式<sup>①</sup>  
The 'Style' Theory of Semper (I) : The Basic Form of Architecture  
薛春霖 Xue Chunlin
- \* 19 基于空间句法的鄞吴村公共空间保护与更新研究  
Research on the Protection and Renewal of Zhangwu Village Public Space Based on the Space Syntax  
倪书雯 Ni Shuwen 贺勇 He Yong 孙姣姣 Sun Jiaojiao
- 23 叙事视角下的空间设计研究综述  
Research Summary of Space Design Based on the Narrative Angle  
刘乃芳 Liu Naifang 张楠 Zhang Nan
- 27 建筑空间形式对“气”的影响  
Influence of the Architectural Space Form upon the "Qi"  
倪金卫 Ni Jinwei 李婧瑜 Li Jingyu 陆翔 Lu Xiang
- 30 德国“环城绿带”建设实践及启示  
Concept and Practice of Green Belt in Germany  
李潇 Li Xiao
- 34 解析日本当代建筑设计领先的原因  
Analysis of the Reasons for Leading Position of Contemporary Japanese Architecture Design  
吴农 Wu Nong 舒莹 Shu Ying 申玉洁 Shen Yujie

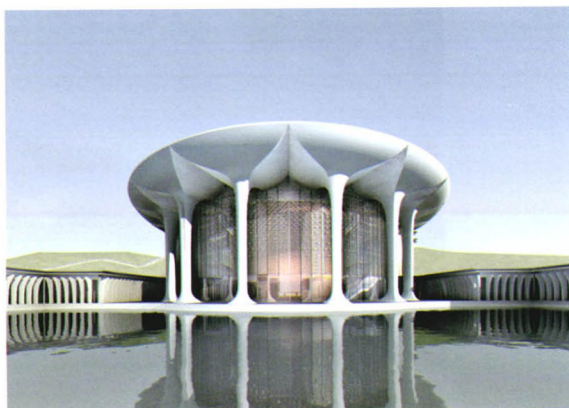


- 38** 西藏苯教寺庙教育建筑单元研究  
Education Building Unit of Bon Religion Temple in Tibet  
杜明倩 Du Mingqian 戚瀚文 Qi Hanwen
- 43** “数据地产”  
——关于云时代一种新建筑类型的思考  
Data Real Estate:  
Thinking About a New Architecture Type in the Time of Cloud  
刘圆圆 Liu Yuanyuan 陆昭 Lu Zhao 王瀚辰 Wang Hanchen
- \* **48** 我国第一代建筑师的职业价值观及其当代启示  
Chinese First Generation Architects' Occupational Values and Contemporary Enlightenment  
金焕玲 Jin Huanling 周虹 Zhou Hong

## 建筑实践

Architectural Practice

- \* **51** 太阳能集热器与集合住宅外界面一体化设计研究  
——以北京为例  
Study on Integrated Designs of Solar Thermal Collectors and Envelops of Apartment Buildings:  
A Case Study of Beijing  
吴双月 Wu Shuangyue 陈岚 Chen Lan
- 55** 浅析老年大学交往空间优化设计  
——以湖北省老年大学为例  
Research on Optimizing the Intercourse Space of the Universities for the Elderly:  
Based on the Investigation and Study of the Universities for the Elderly of Hubei Province  
常健 Chang Jian 周静思 Zhou Jingsi
- \* **59** 以公共性为导向的当代中学交往空间塑造  
——以郑州市南塘中学设计为例  
The Communication Space Design of Contemporary High School Oriented by Publicity:  
A Case Study of Nantang Middle School Design in Zhengzhou  
雷沐羲 Lei Muxi 许建和 Xu Jianhe 魏春雨 Wei Chunyu
- 64** 中庭空间认知调研与评价  
——以西单大悦城为例  
Spatial Cognition Evaluation of Atriums in Joy City Shopping Mall in Xidan Commercial District  
孙德龙 Sun Delong
- \* **70** 现代语境下禅宗意境的物化演绎  
——新兴惠能纪念堂建筑设计方案  
Materialization Deduction of Zen Buddhism in the Contemporary Context:  
Taking the Example of the Architectural Scheme Design of Huineng Memorial Hall  
苏朝浩 Su Chaohao 林康强 Lin Kangqiang
- \* **74** 建筑遮阳的系统化策略研究  
Research on the Systematic Strategy of Building Shading  
杨维菊 Yang Weiju 马建辉 Ma Jianhui 徐光 Xu Guang
- 78** 基于因子分析法的杭州少儿公园满意度评价研究  
Study on Hangzhou Children's Park Satisfaction Evaluation Based on Factor Analysis  
陈洁茵 Chen Jieyan 邓云兰 Deng Yunlan 夏宜平 Xia Yiping



## 城乡规划·园林景观

Urban Planning · Garden Landscape

- 83** 基于适宜性评价的厦门市海沧区绿道选线规划  
Greenway Site Selection in Haicang District of Xiamen Based on Suitability Assessment  
汪民 Wang Min 贾建玲 Jia Jianling 张俊磊 Zhang Junlei
- 90** 历史建筑的保护性再利用  
——以青岛市“兰山路28号改造”工程为例  
Protective Reuse of Historic Buildings:  
Taking the Renovation of Lanshan Road No.28 Project in Qingdao City as an Example  
郭佩艳 Guo Peiyan
- \* **93** 植被园景与校园场所的设计关联性研究  
——以武汉大学历史校区的自然景观为例  
Research on the Design Link Between the Plant Landscape and the Campus District:  
Taking the Example of the Natural Landscape About the Historical Campus of Wuhan University  
金艺 Jin Yi
- 99** “工业锈带”的重生  
——以上海市杨浦区滨江地带的发展为例  
The Rebirth of “Industrial Rust Belt”:  
A Case Study of the Waterfront Region in Shanghai Yangpu District  
徐洪涛 Xu Hongtao
- 103** 和而不同  
——北京101中学科普文化园景观设计  
Seeking the Features in Harmony:  
A Case Study of the Landscape Design of Science and Culture Garden in Beijing 101 Middle School  
张红卫 Zhang Hongwei 张睿 Zhang Rui 李晓光 Li Xiaoguang
- 107** 严寒地区坡地社区公园景观构成元素整体性解析  
Holistic Analysis of the Landscape Constituent Elements on Cold Regions Sloping Community Park  
王圣保 Wang Shengbao 陈莉 Chen Li 左茜 Zuo Xi
- 111** 江南传统水岸空间的重塑初探  
——以建德市安仁村特色风情片区修建性详细规划为例  
Research on Rebuilding Traditional Space Form of Jiangnan's River Bank:  
A Case Study of the Detailed Design of Features Area in Anren Village in Jiande City  
陈锋 Chen Feng 陈怡 Chen Yi
- \* **115** 美国奥斯汀城市空间特色分析及启示  
Analysis on Urban Spacial Characteristics of Austin City in the U.S.  
林锦玲 Lin Jinling 徐杰星 Xu Jiexing
- 119** 地域性传统村落可持续发展探索与思考  
——以贵阳镇山村更新改造概念设计为例  
Exploration and Consideration of Regional Sustainable Development in Traditional Villages:  
A Case Study of Zhenshan Village Renovation Conceptual Design in Guiyang City  
蒋怡辰 Jiang Yichen 金玮思 Jin Weisi 裘鸿菲 Qiu Hongfei
- 124** 武汉县华林路街道空间初探  
First Exploration of Street Space of Tanhualin Street in Wuhan  
李嵩峰 Li Aifeng



## 建筑文化

Architectural Culture

- 128** 曲江模式下历史文化标识体系建构  
Building of Historical and Cultural Identification System Based on the Qujiang Model  
吴寄斯 Wu Jisi 李晶 Li Jing
- \* **132** 龙氏家祠建筑概貌及其分析(下)  
——建筑装修与装饰艺术概述与分析  
Architecture Overview and Analysis of the Long Family Ancestral Temple(Part Two):  
Overview and Analysis of Wooden Fitting and Decoration Art  
马琪 Ma Qi 李坚 Li Jian
- \* **137** 天水城风土聚落历史演进研究  
Research on Historical Evolution of Vernacular Settlement in Tianshui City  
孟祥武 Meng Xiangwu 叶明晖 Ye Minghui 周琪 Zhou Qi
- \* **141** 地域特征对传统民居结构影响初探——以柏庙村为例  
Preliminary Study of Geographical Features Impacting on the Structure of Traditional Houses:  
A Case Study in Baimiao Village  
黄丽 Huang Li 唐丽 Tang Li
- \* **145** 历史文化名城边缘区传统村落形态演变及启示——以陕西韩城庙后村为例  
Analysis on the Evolution and Enlightenment of the Traditional Village' s Settlements Pattern of  
the Fringe Area of Historic and Cultural City: A Case Study on Hancheng Miaohou Village in Shaanxi  
席鸿 Xi Hong 肖莉 Xiao Li 桑国臣 Sang Guochen
- \* **150** 论借景在山岳型风景区景桥造景中的应用——以泰山风景名胜区为例  
Application of Borrowing Scenery in Garden-bridge in Mountain Resorts:  
Taking Mount Tai Scenic Area as an Example  
孙双 Sun Shuang 于东明 Yu Dongming 杨乔韵 Yang Qiaoyun
- \* **153** 乡村地区古代城市遗址整体保护研究——以汉水流域楚皇城遗址为例  
Research on the Overall Conservation of Ancient City Site in Rural Areas:  
Taking Chu Emperor Site in the Han River Basin as an Example  
徐瑶 Xu Yao 王玘 Wang Le
- \* **157** 浅析西藏前弘期佛教建筑特点  
Analysis of Tibet Qianhong Period Buddhist Architectural Characteristics  
宗晓萌 Zong Xiaomeng 牛婷婷 Niu Tingting
- \* **162** 中国传统建筑院落模式根源浅析  
Analysis of Traditional Architectural Courtyard Space Mode of China  
陈忙锋 Chen Mangfeng 虞春隆 Yu Chunlong 吴国波 Wu Guobo
- \* **166** 北京门头沟区灵水传统村落研究  
Study on Lingshui Village of Chinese Traditional Village in Mentougou District, Beijing  
郭华瞻 Guo Huazhan 张璐 Zhang Lu
- 172** 荆楚传统建筑文化在新中式建筑设计中的表达——以宜昌市龙泉古文化街为例  
Reflecting of the Culture of Jingchu Traditional Architecture in New Chinese Style Architecture Design:  
A Case Study of Longquan Traditional Cultural Street in Yichang City  
陈林 Chen Lin 陈升彪 Chen Shengbiao 雷体洪 Lei Tihong
- \* **177** 成都“北改”之城市更新策略研究  
——以驷马桥片区为例  
Research of Urban Regeneration Strategies of the Northern Chengdu Renovation District:  
A Case Study of Sima qiao District  
胡昂 Hu Ang 牟燕川 Mou Yanchuan
- \* **181** 福州“三坊七巷”历史街区保护历程的分析及其启示  
Analysis and Enlightenment of the Conservation Course of Sanfang-Qixiang Historical District in Fuzhou  
陈力 Chen Li 李静楠 Li Jingnan 关瑞明 Guan Ruiming



主办单位：中南建筑设计院股份有限公司

湖北省土木建筑学会

邮发代号：38-135

海外发行代号：DK42009

每期定价：¥36 全年：¥432 海外空运：\$30 全年：\$360

万方数据