



CSADI
万方数据



华中建筑
HUAZHONG ARCHITECTURE

01/2017

HA人物

1

坚持技术创新 引领企业迈向国际一流

Adhering to Technological Innovation, Leading to the World-class Enterprises



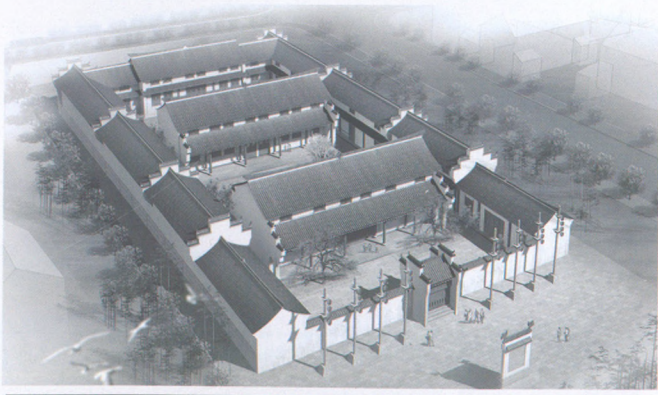
先锋·理论

6

《西斋图》及其所描绘的园林*

Garden in and out of Xi ZhaiTu

秦柯 Qin Ke / 彭历 Peng Li



17

文化造城运动新策略:

城市艺术区及博物馆群落的兴起

New Strategies for Culture Creates City Movement:

The Rise of Urban Art and Museum Communities

欧雄全 Ou Xiongquan / 王蔚 Wang Wei

25

DGNB中国建筑能耗环境效益的全生命周期评估方法研究*

The Building's Environmental Impact Assessment in the Life-cycle of DGNB

王大伟 Wang Dawei / 王日旺 Wang Riwang

张凯 Zhang Kai

10

历史文化元素在聚落型街区保护性改造中的手法意义*

The Meaning of Historic Culture Elements that Materialized in the Protection and Alteration in Settlement-sites

徐永利 Xu Yongli

30

中国传统园林建筑空间的现代“芯”*

Modern Core of Chinese Traditional Landscape Architecture Space

苏芳 Su Fang / 毕洋洋 Bi Yangyang

田朝阳 Tian Chaoyang

设计·技术

35

对北京市社区老旧医疗服务中心(站)适老性改造的思考
——以八里庄社区服务中心为例*

Medical Care Transformation of Health Service
Centers(Station) in Beijing Old Community:
A Case of the Old Community of Balizhuang Streets
in Beijing

胡惠琴 Hu Huiqin/刘楠 Liu Nan

41

莫高窟景观信息模型建立与应用研究

Establishment and Application of
Mogao Grottoes Landscape Information Modeling

尚瑞华 Shang Ruihua/闫增峰 Yan Zengfeng

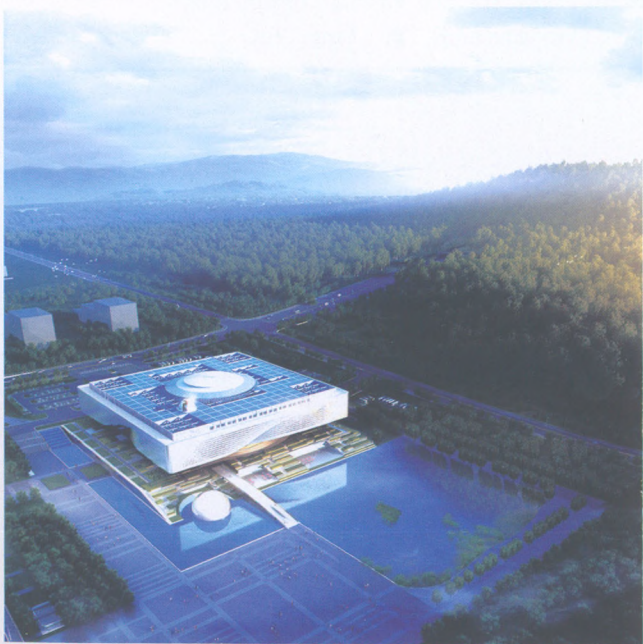
樊夏玮 Fan Xiawei

46

BIM技术在湖北省科技馆新馆设计中的应用探索

The Application of BIM Technology in the Design
of New Science & Technology Museum of Hubei Province

汤鹏 Tang Peng/包若一 Bao Ruoyi



50

尊重历史 尊重自然

——恩施连珠半岛小区山地建筑设计

Respect History & Nature:

Lianzhu Island Community Design, Enshi, Hubei

蒋孟 Jiang Meng/陈铭 Chen Ming



55

江南城市滨水旧建筑价值评估体系研究*

The Evaluation System of the Old Buildings in the Urban
Waterfront Space in Southern Reaches of Yangtze River

周曦 Zhou Xi/张芳 Zhang Fang

规划·园林

60

市政设施地段保护性再利用探索

——以东营市职业学院南片区城市设计为例

Conservation and Renewal of Municipal Facilities Sites:
A Case Study of Urban Design of the South Area of Career
Academy, Dongying

张建波 Zhang Jianbo/俞一杰 Yu Yijie

吴宦漳 Wu Huanzhang

65

古城复兴思考:

西安特色文化街区复兴规划初探

Xi'an Cultural District Regeneration Planning
Based on Temporal Structure Theory of the Ancient City
Regeneration

田涛 Tian Tao/程芳欣 Cheng Fangxin

71

城市游憩绿地小气候适应性设计策略解析*
Strategy Analysis on Urban Recreational
Greening Micro-climate Adaptability Design
彭 历 Peng li/王予芊 Wang Yuqian

77

街旁绿地内部行为空间组织
——以邻北京市三环辅路的街旁绿地为例*
Space Organization for Behavior in Roadside Green
Space:
A Case Study of the Green Space Adjacent to the Side
Road of Beijing 3rd Ring
李宇宏 Li Yuhong/李亚峰 Li Yafeng

82

蝴蝶型旅游度假及其载体的规划设计研究
——以利川市苏马荡国家级旅游度假区规划设计为例
Planning and Design of Butterfly-style Tourism Resort
and Its Carrier:
Taking the Sumadang National Tourist Resort in
Lichuan City as an Example
万 敏 Wan Min/宋庆俐 Song Qingli
季 茜 Ji Qian

89

基于“原点”理论的景观规划设计研究
——以黄冈市环白潭湖景观规划为例
Study on the Landscape Planning Based on "Origin" Theory:
Taking Baitan Lake in Huanggang as an Example
郭东林 Guo Donglin



文化·历史

95

晋中地区金代建筑的“插接前廊”传统*
The Tectonic Tradition of Implanted Front Porch in the Ancient
Architectures of Jin Dynasty Remained in Jinzhong Area
喻梦哲 Yu Mengzhe/崔陇鹏 Cui Longpeng

99

老汉口跑马场调查纪实
——以西商跑马场为例
The Investigation and Documentary of the
Old Hankow Racecourse:
A Case of the Xishang Racecourse
李 翊 Li Yi/李 钊 Li Fang

104

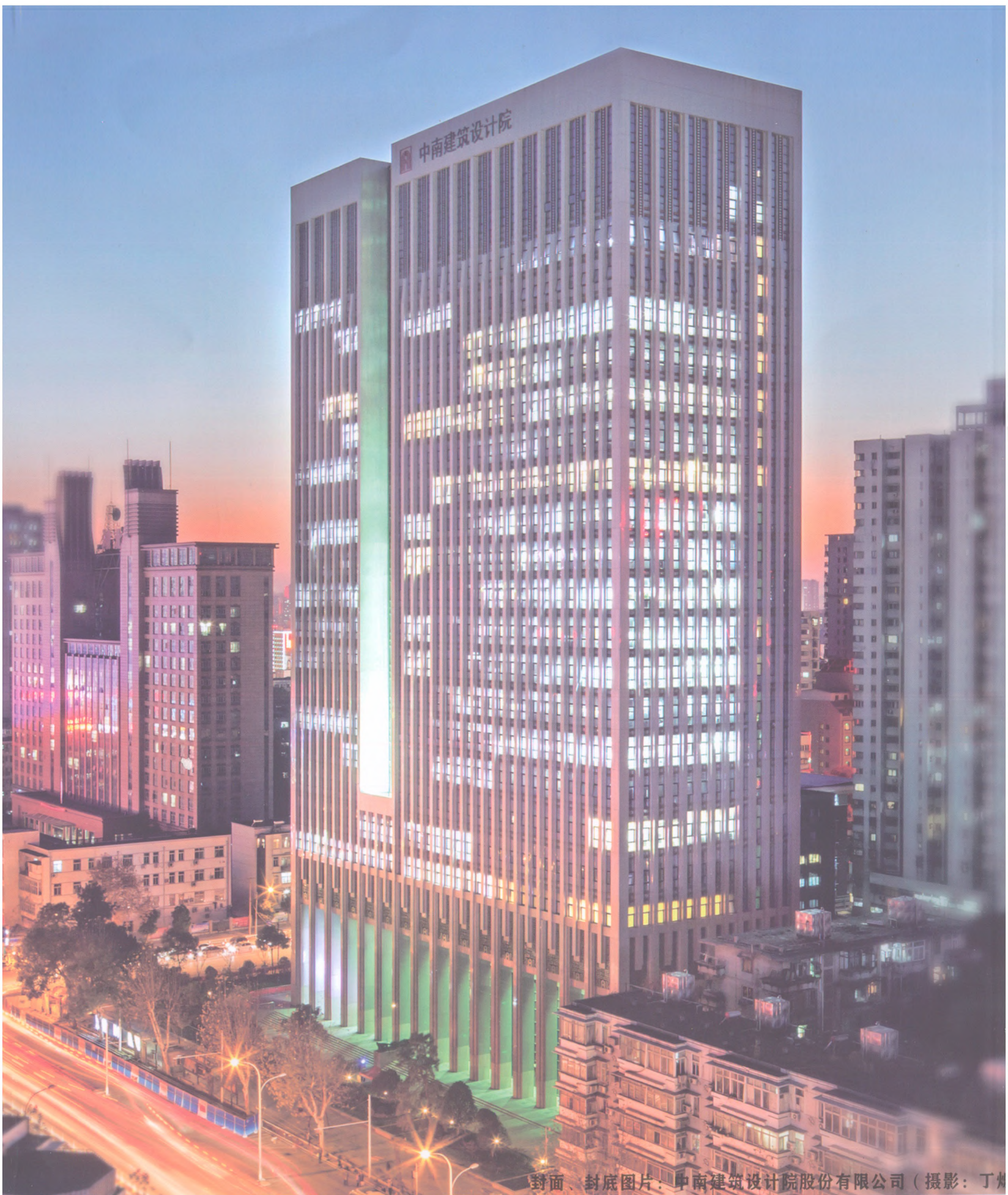
民国时期惠州新式礼制建筑分析*
New Ritual Architecture During Republican Period in Huizhou
赖 瑛 Lai Ying
杨星星 Yang Xingxing

109

关中地区城市型与山林型寺庙园林环境比较研究
Comparative Study on the Temple Garden Environment Between
Urban Type and Forest Type in Guanzhong Area
杨 雪 Yang Xue/王 军 Wang Jun/宋桂杰 Song Guijie

115

基于复合设计理论的场所及室内
两系统应用的剖析*
The Architect Components in Site and Interior System Based on
the Perspective of Integrated Design
关雅明 Guan Yaming/孙一民 Sun Yimin



中南建筑设计院

封面、封底图片：中南建筑设计院股份有限公司（摄影：丁焯）

主办单位：中南建筑设计院股份有限公司
国际刊号：ISSN 1003-739X
网站：<http://www.hzjz.cc>
万方数据

湖北省土木建筑学会
邮发代号：38-135
每期定价：¥36

国内统一刊号：CN 42-1228/TU
海外发行代号：DK42009
海外空运：\$30



9 771003 739051