

N.O. 255

HA
华中建筑
HUAZHONG ARCHITECTURE

华中建筑 | HUAZHONG ARCHITECTURE

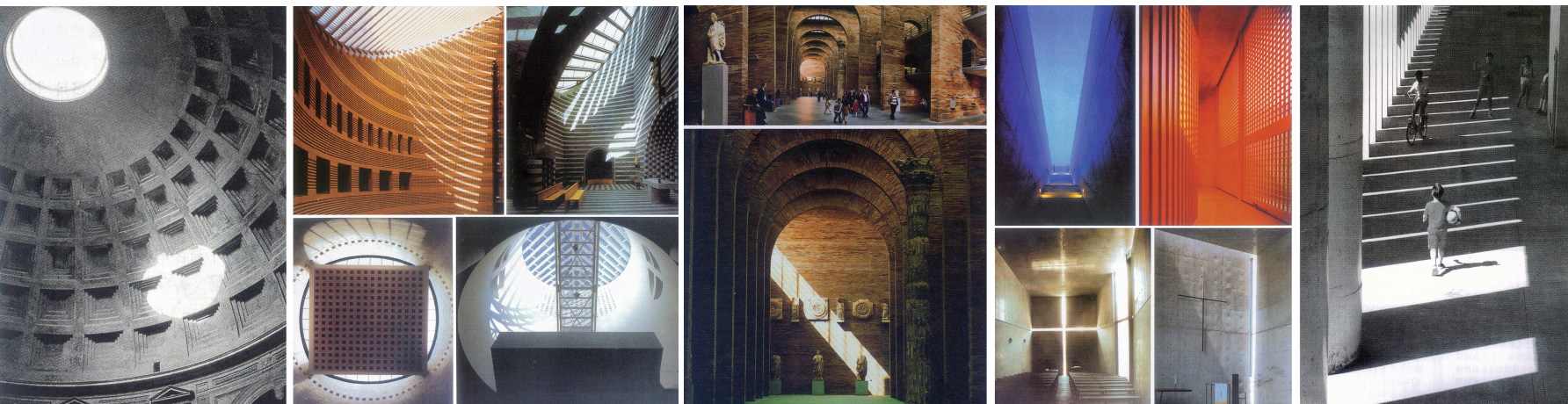
ISSN 1003-739X



VOL 36 NO.255 08/2018

201808

9 771003 739X 08



*标记为基金、科研项目类成果

目录

先锋·理论

- 01 / 基于Citespace知识图谱分析的中国现代建筑创作研究综述*/景涛/程娟
- 06 / 历史街区空间魅力评价研究——因子筛选及体系构建
崔叙/张凌菲/王一诺
- 09 / 建筑现象复杂性描述的生成过程*/高伟
- 13 / 中国传统民居院落空间的“围合”哲学/黄博文/杨大禹
- 18 / 摒弃“零度化”，转译场所感——弥合记忆创伤*/陈小辉/张志雄/刘淑虎

设计·技术

- 22 / 交通枢纽过渡空间的行为与心理需求差异研究*/沈百琦/胡映东
- 26 / 基于BIM技术的绿色建筑设计方法研究
——以珠海市横琴保利国际广场为例/胡若文/田甜
- 31 / 广州高校图书馆室内环境评价研究/马越
- 35 / 四季闻馨——扬州小金山香景图像化分析/包广龙/杨豪中
- 39 / 现代楼房仓设计中的遮阳技术策略
——以北京市粮油应急保障中心建筑设计为例*/王祖远
- 44 / 轨上“龙舟”——东莞火车站（原石龙站）实施方案设计实践
唐雅男/蒋涛
- 48 / 山水苗疆，笙鼓聚落——世界苗族文化展示中心项目方案构思*
陈文东/吴巍/郭卫宏
- 53 / 基于“共生”理念的保利世界贸易中心项目实践/倪阳/侯晓
- 57 / 中医院传统疗法空间的设计优化策略研究*/石媛
- 61 / 复杂地形条件下的大型文体综合体项目设计初探
——以贵州省毕节市金沙县奥林匹克中心项目为例/鲍亚仙

规划·园林

- 66 / 严寒气候条件下村镇建设现状特征及其规划应对策略*/吕小勇/王涛
- 71 / 基于绿色基础设施的陕南地区小城市开敞空间构建/王琛
- 75 / 基于智能体建模的避灾绿地规划分析研究*/吴昊/刘凌波
- 78 / 自然与人文共融——渭南市西海滨水公园景观设计*/唐英/史承勇/娄钢
- 82 / 社区公共空间居民活动行为特征及空间布局关联性初探
——以苏州园区邻里中心为例*/张玲玲/杨绍亮
- 87 / 轨道交通综合枢纽换乘空间立体化设计研究*/董玉香/姜玲丽
- 93 / 文化复兴视角下的传统街区城市更新策略
——以武汉归元片重点功能区实施性规划为例/望开磊/罗岑

文化·历史

- 98 / 应县木塔建筑设计分析（一）*/张毅捷/李寅/韩效
- 101 / 关于社旗山陕会馆春秋楼复原中立面比例的研究/寇宇荣
- 104 / 冀南民居门楼斗拱形态浅析/谢空/王珊
- 108 / 焦作山地传统石砌民居结构与构造初探/陈兴义/袁平平
- 112 / 武汉大学早期建筑的选址与建造（下篇）/陈慧东/童乔慧
- 116 / 基于改造回访对新形势下上海里弄保护更新的思考/张晨杰
- 119 / 晋南云丘山传统村落空间特征解析*/郑旭/薛林平
- 124 / 河西走廊历史城镇文脉时空演化机理研究
——以文物保护单位为例*/周在辉/马静
- 129 / 基于人类聚居学理论的传统聚落更新策略探究：以南疆地区为例*
孙应魁/塞尔江·哈力克

Pioneer · Theory

- 01 / Review on the Study of China's Modern
Architecture Creation on the Knowledge Map of Citespace
Jing Tao/Cheng Juan
- 06 / Spatial Charm Evaluation of Historical Street:
Factor Selection and System Construction
Cui Xu/Zhang Lingfei/Wang YINUO
- 09 / The Process of Complexity Description of Architectural Phenomena
Gao Wei
- 13 / The Enclosing Philosophy of Courtyard Space in Chinese Traditional
Dwellings/Huang Bowen/Yang Dayu
- 18 / Abandon "Zero Space" and Translate the Sense of place:
Heal Memories of Trauma
Chen Xiaohui/Zhang Zhixiong/Liu Shuhu

Design · Technology

- 22 / Differences Between Behavioral and Psychological Needs of
Transition Space in Transport Hub/Shen Baiqi/Hu Yingdong
- 26 / Green Building Design Method Based on BIM Technology:
A Case Study of Hengqin Poly International Plaza in Zhuhai
Hu Ruowen/ Tian Tian
- 31 / Indoor Environment Evaluation of University Libraries in Guangzhou
Ma Yue
- 35 / Fragrant Flowers Blossoming All Year Round:
Image Analysis of Smellscape in Xiaojinshan Garden
Bao Guanglong/Yang Haozhong
- 39 / Strategy of Shading Technology in the Design of Multi-storied
Granary Building: Taking Beijing Grain and Oil Emergency Support
Center Architectural Design as an Example/Wang Zuyuan
- 44 / "Dragon Boat" on the Rail: Practice of Scheme Design for Dongguan
Railway Station (Shilong Railway Station)
Tang Ya'nan/Jiang Tao
- 48 / The Landscape of Miao Settlements Lingered in Sheng Drum:
The Architectural Creation of Cultural Exhibition of Miao
Chen Wendong/Wu Wei/Guo Weihong
- 53 / Project Practice of Poly World Trade Center Based on "Symbiosis"
Ni Yang/Hou Xiao
- 57 / The Design Optimization Strategy of Traditional Medicine Space in
TCM Hospital/Shi Yuan
- 61 / Design of Large-scale Stylistic Complex Under Complex Terrain
Conditions: An Example of the Olympic Sports Center Project of
Jinsha County, Bijie City, Guizhou Province
Bao Yaxian

Planning · Garden

- 66 / Planning Strategies and Characteristics Analysis of Village and Town
Construction Under Severe Cold Climate
LYu Xiaoyong/Wang Tao
- 71 / Open Space System Planning of Small Cities in Southern Shaanxi Region
from Green Infrastructure Perspective
Wang Chen
- 75 / Agent-based Modeling and Simulation on Escaping Green Space Planning
Analysis/Wu Hao/ Liu Lingbo
- 78 / Integrating with Nature and Humanity:
The Xihai Waterfront Park Landscape Design in Weinan City
Tang Ying/Shi Chengyong/Lou Gang
- 82 / Exploring Behavioral Patterns in Community Public Space and the
Correlation with Spatial Arrangement:
A Case Study of Neighborhood Centers in Soochow
Zhang Lingling/Yang Shaoliang
- 87 / The Transfer Space Three-dimensional Design of Rail Transit Hubs
Dong Yuxiang/Jiang Lingli
- 93 / The Urban Renewal Strategy of Traditional Block in the View of Cultural
Revival: A Case Study on the Implementation Planning of the Key Functional
Area in Wuhan Guiyuan Tablet
Wang Kailei/Luo Cen

Culture · History

- 98 / The Architectural Design of Sakyamuni Pagoda of Fogongsi Temple in
China (Part I)/Zhang Yijie/Li Yin/Han Xiao
- 101 / The Facade Proportion of the Spring & Autumn Tower Restoration in
Sheqi Shan-shan Guildhall/Kou Yurong
- 104 / The Form of Gatehouse Brackets in Southern Hebei/Xie Kong/Wang Shan
- 108 / The Structure and Tectonics of Traditional Stone Houses in Jiaozuo
Mountain Area/Chen Xingyi/Yuan Pingping
- 112 / Site Selection and Construction of Early Architecture in Wuhan University
(Part Two)/Chen Huidong/Tong Qiaohui
- 116 / Reflections on the Protection and Renewal of Shanghai Lane in the New
Situation Based on the Return Visit Result/Zhang Chenjie
- 119 / The Spatial Feature of Traditional Villages in Yunqiu Mountain, South of
Shanxi Province/Zheng Xu/Xue Linping
- 124 / Spatial-temporal Evolution Mechanism of Historical Towns in Hexi
Corridor: Taking Cultural Relics Protection Units as an Example
Zhou Zaihui/Ma Jing
- 129 / Renewal Strategy of Traditional Villages Premised on Human Settlement
Theory: A Case of Southern Xinjiang/Sun Yingkui/Saierjiang · Halike