

国际刊号 ISSN1009-0061 国内刊号 CN32-1076/F 广告许可证 3200004980429



QK2036897

JIANGSU COMMERCIAL FORUM

# 江苏商论

- 国家首批认定学术期刊
- 中国人文社科(AMI)核心期刊扩展版期刊
- 中国学术期刊综合评价数据库(知网)来源期刊
- 中国学术期刊全文数据库收录期刊

新冠肺炎突发事件对餐饮业的影响和应对思考  
浅析我国共享经济服务业的融资模式、商业模式发展现状  
在线音乐领域的盈利模式  
我国小微型农产品跨境电商存在的问题与对策研究  
苏州市外贸营商环境的评价和优化分析  
新常态下江苏旅游业发展战略研究

## No.9

2020 · 总431期

ISSN 1009-0061



9 771009 006201

投稿邮箱: jsslwb@163.com





# 江苏商论

创刊于1984年 2020年第9期(总第431期)

国际刊号 ISSN1009-0061 国内刊号 CN32-1076/F

国家首批认定学术期刊

中国人文社科(AMI)核心期刊扩展版期刊

中国学术期刊综合评价数据库(知网)来源期刊

中国学术期刊全文数据库收录期刊

全文经过中国知网检测

## 目 录

### 商业经济 Shang Ye Jing Ji

- 03 新冠肺炎突发事件对餐饮业的影响和应对思考  
姜坤,郝志阔,吴耀华
- 07 浅析我国共享经济服务业的融资模式、商业模式发展现状  
——以“滴滴出行”为例 杨新利
- 09 在线音乐领域的盈利模式  
——基于腾讯音乐的研究 严波
- 13 A集团市场营销中的定价方法与价格策略研究 胡婕
- 16 长三角城市群服务贸易发展的现状问题及对策 冯语迪
- 21 新冠肺炎疫情对会展业的影响及应对措施建议 王明明

### 电子商务 Dian Zi Shang Wu

- 24 我国小微型农产品跨境电商存在的问题与对策研究  
马静,王洪清
- 28 农业电子商务发展分析及建议 王显尊,王艺霖
- 32 “一带一路”背景下重庆跨境电商发展研究  
黄学锦,周晓雯,龙彩霞

### 国际商务 Guo Ji Shang Wu

- 36 苏州市外贸营商环境的评价和优化分析  
苏筱辰,姚君
- 42 “一带一路”背景下河南企业“走出去”战略选择及问题研究 郭军峰

### 旅游经济 Lu You Jing Ji

- 46 新常态下江苏旅游业发展战略研究 刘圣兰
- 50 基于钻石模型的南方冰雪旅游产业竞争力分析  
福建师范大学南方冰雪旅游发展研究课题组
- 54 文旅融合下博物馆文创产品创新研究  
博物馆文创产品创新研究课题组
- 57 全域旅游示范创建的机制与效应研究  
——以河北省为例 成傲楠,付子佳,李文心
- 60 基于DEA模型的桂林旅游企业十年发展绩效评价 吴俊

### 服务经济 Fu Wu Jing Ji

- 63 南通农村公共文化服务体系建设中存在问题与对策  
翁明丽

### 68 苏州养老服务业的现状与思考

居一方,张虹,李健龙

### 71 平台战略视角下我国养老地产生态圈构建研究

李国蓉

### 商业财会 Shang Ye Cai Kuai

### 75 金融科技商业银行小微企业客户关系管理创新

申悦琳

### 78 会计信息化共享平台存在的问题及对策

杨西荧

### 81 ST公司在摘帽过程中的盈余管理案例研究

赵睿

### 86 乡村振兴背景下经济责任审计动态评价指标体系初探

王鹏程

### 89 浅议金融精准扶贫贷款资金审计研究探索

——以卢氏县农商银行扶贫贷款资金审计为例

王毓秀

### 94 试论行政事业单位内部控制审计

崔越

### 97 青海省人身保险市场发展路径研究

宋沁鹤,李阳

### 商经管理 Shang Jing Guan Li

### 101 研发投入、创新产出与经营绩效

——基于企业创新产出中介作用的实证研究

王凯,陈卓尔

### 104 国家电网构建“平台型”企业的约束因素与战略路径研究

朱洁,孙亚范

### 109 基于区块链技术的我国股权众筹发展模式研究

张海涛

### 112 \*ST康得新内部控制缺陷问题探析

倪曾胤

### 116 运城市小型房地产中介的发展对策研究

武宇琼,赵媛,李瑞军

### 119 舟山LNG产业发展研究

徐士元,张双超

### 122 现代农业产业体系构建策略

——以河南省为例

徐子轩,胡怀敏

### 商业教育 Shang Ye Jiao Yu

### 125 基于绩效三棱镜法的高职院校“校中企”运营绩效评价研究

董鸿安,丁镭,李云

### 130 高校校友资源开发协同创新研究

——基于招生就业视角

钱琨

### 热点探讨 Re Dian Tan To

### 133 新生代农民工城市融入中的抗逆力问题研究

顾栋栋

### 136 新型冠状病毒肺炎防控视阈下我国城市应急管理 能力提升研究

杨风华,侯依然

# JIANGSU COMMERCIAL FORUM

Started in 1984, No.9, 2020 (Sum No.431), Contents

## Commercial Economy

- 03 *A Study on the Development of the Catering Industry after the COVID-19 Epidemic*
- 07 *Analysis of the Development Status of Financing Model and Business Model of China's Sharing Economy Service Industry*  
—Take "Didi Travel" as an Example
- 09 *Profitable Model in the Field of online Music*  
—Research based on Tencent Music
- 13 *Study on Pricing Methods and Price Strategies in Group A Marketing*
- 16 *Problems and Countermeasures of the Development of Service Trade in Urban Agglomerations in the Yangtze River Delta*
- 21 *The Impact of Covid-19 on the Exhibition Industry and Suggestions on Countermeasures*

## Electronic Commerce

- 24 *Research on the Problems and Countermeasures of Cross-border E-commerce of Small and Micro Agricultural Products in my country*
- 28 *Analysis and Suggestions on the Development of Agricultural E-commerce*
- 32 *Research on Chongqing's Cross-border E-commerce Development under the Background of "One Belt and One Road"*

## International Business

- 36 *Evaluation and Optimization Analysis of the Foreign Trade Business Environment in Suzhou*
- 42 *Henan Enterprise "Going Global" Strategic Choice and Problem Research under the "One Belt and One Road" Background*

## Tourism Economy

- 46 *Research on the Development Strategy of Jiangsu Tourism under the New Normal*
- 50 *Analysis of Southern Ice and Snow Tourism Industry Competitiveness Based on Diamond Model Fujian Normal*
- 54 *Research on Cultural and Creative Products of Museums After the Integration of Cultural and Tourism*
- 57 *Research on the Mechanism and Effect of the Global Tourism Demonstration*  
—Taking Hebei Province as an Example
- 60 *DEA Model-based Guilin Tourism Enterprise Ten-Year Development Performance Evaluation*

## Service Economy

- 63 *Problems and Countermeasures in the Construction of Nantong Rural Public Cultural Service System*
- 68 *Current Situation and Thinking of the Suzhou Elderly Care Service Industry*
- 71 *Research on the Construction of PRC's Pension Real Estate Ecosystem from the Perspective of Platform Strategy*

## Business Accounting

- 75 *Customer Relationship Management Innovation for Small and Micro Enterprises on Fintech Commercial Banks*
- 78 *Problems and Countermeasures of Accounting Information Sharing Platform*
- 81 *ST Company Earnings Management Case Study in the Process of Cap Removal*
- 86 *Research On the Dynamic Evaluation Index System of Economic Responsibility Audit in the Context Of Rural Revitalization*
- 89 *A Brief Discussion on the Research of Financial Accurate Poverty Alleviation Loan Fund Audit Research*  
—Taking the poverty alleviation loan audit of the Rural Commercial Bank of Lu Shi County as an Example
- 94 *On Internal Control Audit of Administrative Institutions*
- 97 *Research on the Development Path of Life Insurance Market in Qinghai Province*

## Business Management

- 101 *R&D Input, Innovation Output and Operating Performance*  
—Empirical Research based on the Intermediary Role of Enterprise Innovation Output
- 104 *Research on Constraints and Strategic Paths of State Grid's Construction of "Platform" Enterprises*
- 109 *Research on the Development Model of my Country's Equity Crowdfunding Based on Blockchain Technology*
- 112 *Analysis of \*ST Kang Dexin's Internal Control Defects*
- 116 *Research on the Development Countermeasure of Small and Medium-sized Real Estate Agency in Yunhu District of Yuncheng City*
- 119 *Research on Zhoushan LNG Industry Development*
- 122 *Strategies for Building Modern Agricultural Industry System*  
—Taking Henan Province as an Example

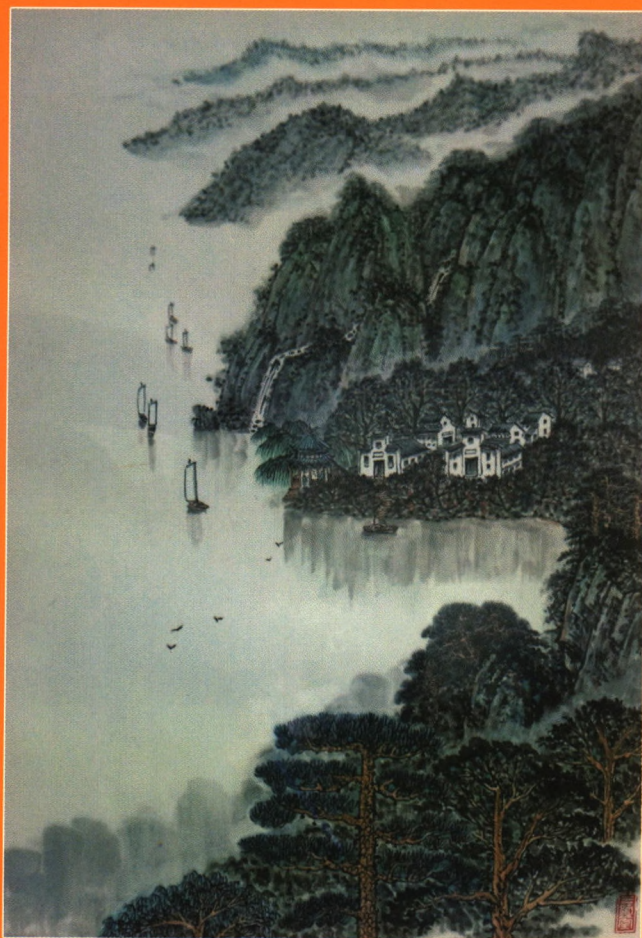
## Business Education

- 125 *Research on the Operation Performance Evaluation of "School Enterprise" in Polytechnic Based on the Performance Prism Method*
- 130 *The Collaborative Innovation Research of the Development on Alumni Resources in Universities*  
—Base on the Perspective of Enrollment and Employment

## Theoretical Hotspot

- 133 *Research on the Resilience of New Generation Peasant Workers in Urban Integration*
- 136 *Study on Improving China's Urban Emergency Management Capability in the Perspective of New COVID-19 Prevention and Control*





太平人家

## Jiangsu Commercial Forum

Started in 1984, No. 9, 2020 (Sum No. 431), Published 20 Per Monty on the same day

Administrated by: Jiangsu Province Federation of Philosophy  
and Social Sciences Circles

Sponsored by: Jiangsu Institute of Business Economics Joint  
Address: Zhongshan North Road 101 of Nanjing China

Postcode: 210009

Tel: 025-83321560

E-mail: [jsslwb@163.com](mailto:jsslwb@163.com)

Editor in Chief: Wang Bo