

美国《工程索引》(EI Compendex) 收录期刊

CODEN JDXGAH



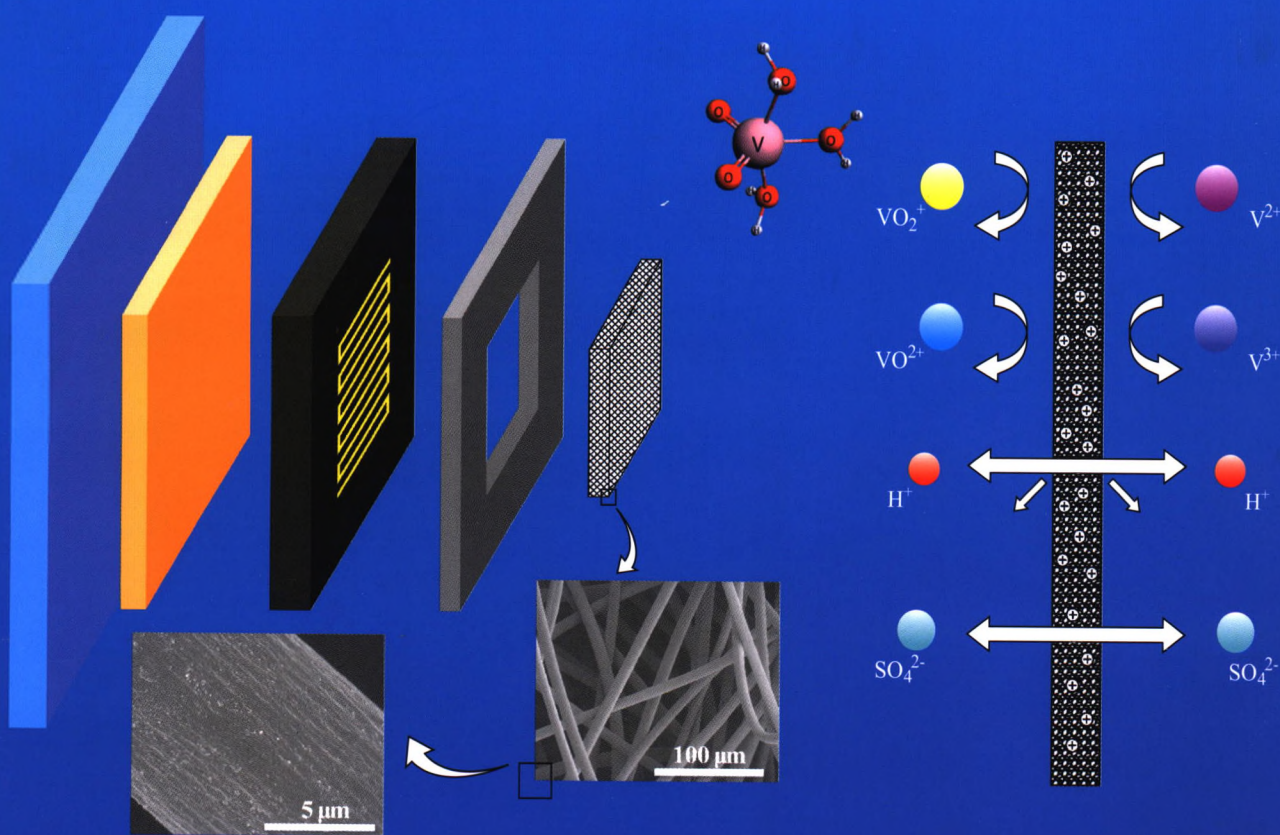
CN 22-1341/T



吉林大学学报

工学版

Journal of Jilin University
Engineering and Technology Edition



封面
文章

曲大为, 扬帆, 范鲁艳, 冯啸宇, 马家义
钒氧化还原流电池技术综述



万方数据

1
2022

第52卷 第1期
Vol.52 No.1
中国·长春
Changchun, China

吉林大学学报(工学版)

第52卷第1期

2022年1月

目次

综述

钒氧化还原流电池技术综述·····曲大为, 杨帆, 范鲁艳, 等 (1)

汽车轮毂加工夹具的研究现状及展望·····郑伟, 孙见君, 马晨波, 等 (25)

车辆工程·机械工程

柴油喷射时刻及汽油比例对均质混合气引燃模式排放性能的影响
·····苏岩, 王博, 刘宇, 等 (37)

随机载荷作用下的结构疲劳寿命区间分析·····孟广伟, 任传鑫, 李锋, 等 (46)

基于机器学习的高速列车轴承温度状态识别·····段亮, 宋春元, 刘超, 等 (53)

加工中心组件故障传播影响力评估·····申桂香, 栾兰, 张英芝, 等 (63)

温度对车身钢铝胶铆连接结构热应力变化的影响·····庄蔚敏, 陈沈, 王楠 (70)

材料科学与工程

SUS301L不锈钢激光焊缝缺陷修复工艺·····王文权, 王岩新, 王洪潇, 等 (79)

基于模态缺陷的变刚度复合材料圆柱壳屈曲特性·····卫宇璇, 张明, 刘佳, 等 (91)

交通运输工程·土木工程

车联网环境下车辆换道博弈行为及模型·····曲大义, 黑凯先, 郭海兵, 等 (101)

基于天牛须小波神经网络的公交到站时间预测·····邝先验, 罗会超, 钟蕊, 等 (110)

基于MADYMO的大客车追尾碰撞事故乘员损伤机理·····张文会, 伊静, 刘委, 等 (118)

交通事故后的交通运行风险状态等级预测方法·····李志慧, 孙雅倩, 陶鹏飞, 等 (127)

具有随机充电需求的混合动态网络平衡模型·····闫云娟, 查伟雄, 石俊刚, 等 (136)

考虑适用性的大跨桥梁主梁动态可靠性融合预测·····樊学平, 杨光红, 尚志鹏, 等 (144)

计算机科学与技术

基于知识图谱嵌入的定义域值域约束补全方法·····雷景佩, 欧阳丹彤, 张立明 (154)

基于锚框变换的单阶段旋转目标检测方法·····曲优, 李文辉 (162)

基于大容量强鲁棒的图像水印算法·····	李喜艳, 周夏冰, 刘 征	(174)
三维水声海底地形地貌实时拼接与可视化·····	李志华, 张烨超, 詹国华	(180)
基于深度学习的蛋白质-ATP结合位点预测 ·····	刘桂霞, 裴志尧, 宋佳智	(187)
结合降噪自编码与极限学习机的LTE上行干扰分析·····	许鸿奎, 姜彤彤, 李 鑫, 等	(195)

通信与控制工程

互质圆形阵列DOA估计方法 ·····	李新波, 王晓玉, 李厚禹, 等	(204)
大规模MIMO-OFDM系统中低复杂度维纳滤波信道估计算法 ·····	李建坡, 李美霖, 杨 涛, 等	(211)

农业工程·仿生工程

小麦联合收获机清选机理分析与优化试验 ·····	耿端阳, 牟孝栋, 张国栋, 等	(219)
草地切根施肥补播复式改良机设计与试验 ·····	梁 方, 王德成, 尤 泳, 等	(231)
基于数字化农机装备的青贮饲料可追溯系统 ·····	王国伟, 朱庆辉, 于海业, 等	(242)

Journal of Jilin University

(Engineering and Technology Edition)

Vol. 52 No. 1

Jan. 2022

Contents

Review of vanadium redox flow battery technology	
.....	QU Da-wei, YANG Fan, FAN Lu-yan, et al. (1)
Research status and prospect of automobile wheel hub machining fixture	
.....	ZHENG Wei, SUN Jian-jun, MA Chen-bo, et al. (25)
Effect of diesel injection timing and gasoline ratio on the emissions of homogeneous charge induced ignition	
.....	SU Yan, WANG Bo, LIU Yu, et al. (37)
Interval analysis of structural fatigue life under random load	
.....	MENG Guang-wei, REN Chuan-xin, LI Feng, et al. (46)
State recognition in bearing temperature of high-speed train based on machine learning algorithms	
.....	DUAN Liang, SONG Chun-yuan, LIU Chao, et al. (53)
Fault propagation impact assessment of machining center components	
.....	SHEN Gui-xiang, LUAN Lan, ZHANG Ying-zhi, et al. (63)
Influence on thermal stress of autobody steel-aluminum clinch-adhesive connection structure	
.....	ZHUANG Wei-min, CHEN Shen, WANG Nan(70)
Defects repair technology of SUS301L stainless steel laser weld	
.....	WANG Wen-quan, WANG Yan-xin, WANG Hong-xiao, et al. (79)
Buckling performance of variable stiffness composite cylindrical shells based on mode imperfections	
.....	WEI Yu-xuan, ZHANG Ming, LIU Jia, et al. (91)
Game behavior and model of lane-changing on the internet of vehicles environment	
.....	QU Da-yi, HEI Kai-xian, GUO Hai-bing, et al. (101)
Bus arrival time prediction based on wavelet neural network optimized by Beetle Antennae Search	
.....	KUANG Xian-yan, LUO Hui-chao, ZHONG Rui, et al. (110)
Injury mechanism of occupants in bus during rear-end crash based on MADYMO	
.....	ZHANG Wen-hui, YI Jing, LIU Wei, et al. (118)
Prediction method of traffic operation risk level after traffic accident	
.....	LI Zhi-hui, SUN Ya-qian, TAO Peng-fei, et al. (127)
Mixed network equilibrium model with stochastic charging demand	
.....	YAN Yun-juan, ZHA Wei-xiong, SHI Jun-gang, et al. (136)
Dynamic reliability fusion prediction of long-span bridge girder considering structural serviceability	
.....	FAN Xue-ping, YANG Guang-hong, SHANG Zhi-peng, et al. (144)
Relation domain and range completion method based on knowledge graph embedding	
.....	LEI Jing-pei, OUYANG Dan-tong, ZHANG Li-ming(154)
Single-stage rotated object detection network based on anchor transformation
.....	QU You, LI Wen-hui(162)
High-capacity and robust image watermarking algorithm
.....	LI Xi-yan, ZHOU Xia-bing, LIU Zheng(174)
Realtime mosaic and visualization of 3D underwater acoustic seabed topography	
.....	LI Zhi-hua, ZHANG Ye-chao, ZHAN Guo-hua(180)

Prediction of protein-ATP binding site based on deep learning	LIU Gui-xia, PEI Zhi-yao, SONG Jia-zhi(187)
LTE uplink interference analysis combined with denoising autoencoder and extreme learning machine	XU Hong-kui, JIANG Tong-tong, LI Xin, et al. (195)
Coprime circular array DOA estimation method.....	LI Xin-bo, WANG Xiao-yu, LI Hou-yu, et al. (204)
Low-complexity Wiener filter channel estimation algorithm in massive MIMO-OFDM system	LI Jian-po, LI Mei-lin, YANG Tao, et al. (211)
Analysis and optimization of cleaning mechanism of wheat combine harvester	GENG Duan-yang, MU Xiao-dong, ZHANG Guo-dong, et al. (219)
Design and experiment of root-cutter with fertilization and reseeded compound remediation machine for grassland	LIANG Fang, WANG De-cheng, YOU Yong, et al. (231)
Silage traceability system based on digital agricultural machinery equipment	WANG Guo-wei, ZHU Qing-hui, YU Hai-ye, et al. (242)

- ☆《中文核心期刊要目总览》收录期刊
- ☆中国科学引文数据库(CSCD)核心期刊
- ☆中国科技核心期刊
- ☆《科技期刊世界影响力指数(WJCI)报告》收录期刊(Q1区)
- ★美国《工程索引》(EI Compendex)收录期刊
- ★美国《化学文摘》(CA)收录期刊
- ★俄罗斯《文摘杂志》(AJ)收录期刊
- ★美国《剑桥科学文摘》(CSA)收录期刊
- ☆中国知网收录期刊
- ☆中国科技论文在线收录期刊
- ☆《中国学术期刊文摘》等国内十多种文摘收录期刊

吉林大学学报(工学版)

JILIN DAXUE XUEBAO (GONGXUE BAN)

JOURNAL OF JILIN UNIVERSITY
(Engineering and Technology Edition)

月刊 1957年创刊

Monthly, Started in 1957

第52卷 第1期 (总第219期) 2022年1月

Vol. 52 No.1 (Sum 219) Jan. 2022

主管单位: 中华人民共和国教育部

Responsible Institution Ministry of Education, the
People's Republic of China

主办单位: 吉林大学

Sponsored by Jilin University

主 编: 任露泉

Editor-in-Chief Ren Lu-quan

执行主编: 张祥合

Executive Editor-in-Chief Zhang Xiang-he

编辑出版: 《吉林大学学报(工学版)》编辑部

Edited and Published by Editorial Board of Journal of

(长春市人民大街5988号 130022)

Jilin University(Engineering and Technology Edition)

电话: 0431-85095297

(5988 Renmin Street, Changchun 130022, China)

电子邮箱: xbgxb@jlu.edu.cn

Tel: 86-0431-85095297

网址: <http://xuebao.jlu.edu.cn/gxb>

E-mail: xbgxb@jlu.edu.cn

Website: <http://xuebao.jlu.edu.cn/gxb>

印 刷: 吉林省保隆冠彩印刷有限公司

Printed by Jilin Baolong Guancai Printing Co., Ltd.

发行范围: 公开发行

Issue Scope Public Issue

国内发行: 吉林省邮政报刊发行公司

Domestic Distributor Distribution Company for Newspaper and
Journals of Jilin Province

国外发行: 中国国际图书贸易集团有限公司

Overseas Distributor China International Book Trading Corporation

(北京399信箱, 邮编100048)

(P.O.Box 399 Beijing 100048, China)

ISSN 1671-5497

中国标准连续出版物号 ISSN 1671-5497
CN 22-1341/T

国内 12-46
国际 BM4549

国内定价 60.00元/册
720.00元/年

