

美国《工程索引》(EI Compendex) 收录期刊

CODEN JDXGAH

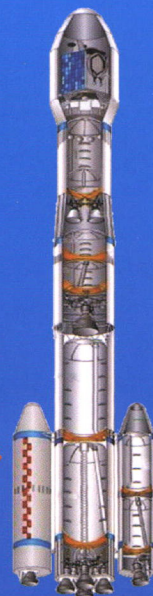
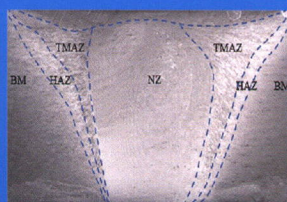
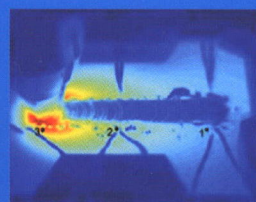
QK2249396
CN 22-1341/T



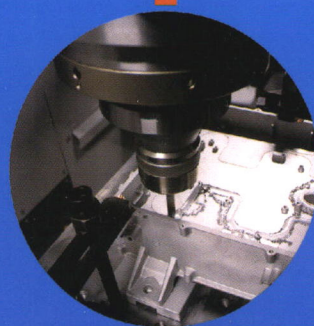
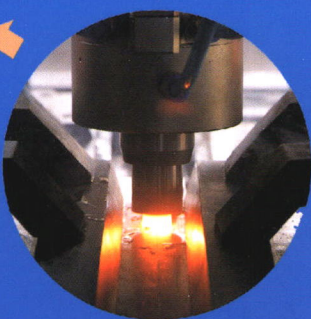
吉林大学学报

工学版

Journal of Jilin University
Engineering and Technology Edition



ABAQUS



封面文章 | 卢晓红, 乔金辉, 周宇, 马冲, 隋国川, 孙卓
搅拌摩擦焊温度场研究进展



万方数据

1
2023

第53卷 第1期
Vol.53 No.1
中国·长春
Changchun, China

吉林大学学报(工学版)

第 53 卷 第 1 期

2023 年 1 月

目 次

综述

搅拌摩擦焊温度场研究进展·····卢晓红, 乔金辉, 周宇, 等 (1)

碳纤维增强热塑性复合材料研究进展·····邓海, 王超, 杨京浩, 等 (18)

车辆工程·机械工程

EGR 协同点火对火花辅助压燃汽油机性能的影响·····周游, 洪伟, 解方喜, 等 (31)

轮毂电机电动汽车主动悬架约束状态反馈 H_∞ 控制·····李杰, 贾长旺, 成林海, 等 (41)

振荡线圈式主动液阻悬架中高频主动与被动特性·····范让林, 刘子健, 马富亮, 等 (50)

基于分层控制器的 SCR 系统滚动时域优化控制方法·····孙耀, 胡云峰, 周杰敏, 等 (61)

机床主轴热关键点选择与典型转速热误差预测·····郭世杰, 张学炜, 张楠, 等 (72)

信号交叉口网联电动汽车自适应学习生态驾驶策略·····庄伟超, 丁昊楠, 董昊轩, 等 (82)

实际道路工况下“油改气”双燃料出租车的排放特征·····王计广, 桂华侨, 杨志文, 等 (94)

材料科学与工程

热处理对 TC4 钛合金激光双束焊接接头疲劳性能的影响·····回丽, 陆家琛, 周松, 等 (105)

交通运输工程·土木工程

城市路段行人不良过街行为决策模型及技术矫正措施·····马丹, 裴玉龙, 刘涛, 等 (111)

基于密度峰值聚类的交通控制子区划分方法·····魏路, 高磊, 李晋宏, 等 (124)

手机信息干预下寒冷赛区行人候车决策行为·····黄文博, 陈艳艳, 柴树山 (132)

突发公共卫生事件下城市公交传播疫情模型·····邹少杰, 孙健 (141)

智能网联混合交通流 CO_2 排放影响及改善方法·····秦严严, 杨晓庆, 王昊 (150)

可液化土阻尼系数对地铁结构地震响应的影响·····刘顺, 唐小微, 栾一晓 (159)

拉筋约束薄壁方钢管混凝土短柱轴压性能·····陈俊, 倪家贵, 刘哲, 等 (170)

离散元法分析集料接触特性对沥青混合料剪切疲劳寿命的影响

·····彭勇, 章秀芳, 郭泽宇, 等 (178)

基于状态空间法的含裂缝水泥路面结构分析·····孙雅珍, 郑直, 黄伟明, 等 (188)

基于分子动力学的生物质透层油稳定性·····时爽, 林岚钦, 马涛, 等 (197)

动静水环境作用下级配离析对沥青混合料水损害的影响评价

.....陈 栩, 曹超飞, 尚 静, 等 (210)

沥青混合料的搅拌功率试验和黏度模型刘聂瑀子, 荣 鑫, 刘洪海, 等 (220)

计算机科学与技术

基于施工场景的视觉关系检测方法王俊杰, 农元君, 张立特, 等 (226)

基于元学习的小样本图像非对称缺陷检测方法黄彭奇子, 段晓君, 黄文伟, 等 (234)

不同光照条件下含噪遥感图像边缘检测算法马为翊, 张 燊, 马传香, 等 (241)

基于改进 SegNet 的遥感图像建筑物分割方法朱 冰, 李紫薇, 李 奇 (248)

通信与控制工程

采用 VGG19 和低通滤波的红外与微光图像融合方法刘洲洲, 孙传新, 王晓柱, 等 (255)

基于改进 BPNN-MPF 算法的锂离子电池 SoE 估计马 彦, 郭则宣 (263)

冰雪环境下基于神经网络的驾驶人换道意图识别卢辉道, 赵 枫, 谢 波, 等 (273)

农业工程·仿生工程

交替换岗式大豆小区育种排种器优化设计与试验顿国强, 刘文辉, 毛 宁, 等 (285)

Journal of Jilin University

(Engineering and Technology Edition)

Vol. 53 No. 1

Jan. 2023

Contents

| | |
|--|---|
| Research progress of temperature field in friction stir welding | LU Xiao-hong, QIAO Jin-hui, ZHOU Yu, et al. (1) |
| Research progress of carbon fiber reinforced thermoplastic composites | DENG Hai, WANG Chao, YANG Jing-hao, et al. (18) |
| Effect of EGR and ignition on performance of spark-assisted compression ignition engine fueled with gasoline | ZHOU You, HONG Wei, XIE Fang-xi, et al. (31) |
| Constrained state feedback H_∞ control for active suspension of in-wheel motor electric vehicle | LI Jie, JIA Chang-wang, CHENG Lin-hai, et al. (41) |
| Mid-high-frequency active and passive dynamic characteristics of active hydraulic mounts with oscillating coil actuator | FAN Rang-lin, LIU Zi-jian, MA Fu-liang, et al. (50) |
| Moving horizon optimization control of SCR system based on hierarchical controller | SUN Yao, HU Yun-feng, ZHOU Jie-min, et al. (61) |
| Thermal key point select and error prediction under typical speed of machine tool spindle | GUO Shi-jie, ZHANG Xue-wei, ZHANG Nan, et al. (72) |
| Learning based eco-driving strategy of connected electric vehicle at signalized intersection | ZHUANG Wei-chao, Ding Hao-nan, DONG Hao-xuan, et al. (82) |
| Emission characteristics of "oil-to-gas" dual fuel taxis under actual road conditions | WANG Ji-guang, GUI Hua-qiao, YANG Zhi-wen, et al. (94) |
| Effect of heat treatment on fatigue properties of TC4 titanium alloy by laser double beam welded joint | HUI Li, LU Jia-chen, ZHOU Song, et al. (105) |
| Decision making model and technical corrective measures of pedestrian's bad crossing behavior in urban road section | MA Dan, PEI Yu-long, LIU Tao, et al. (111) |
| Traffic sub-area division method based on density peak clustering | WEI Lu, GAO Lei, LI Jin-hong, et al. (124) |
| Decision-making behavior of pedestrians in cold competition area under the intervention of mobile information | HUANG Wen-bo, CHEN Yan-yan, CHAI Shu-shan (132) |
| Modeling urban bus transit spreading the epidemic under public health emergencies | WU Shao-jie, SUN Jian (141) |
| Impacts of CO ₂ emissions and improving method for connected and automated mixed traffic flow | QIN Yan-yan, YANG Xiao-qing, WANG Hao (150) |
| Influence of Rayleigh damping coefficient on seismic response of subway structure in liquefiable soil | LIU Shun, TANG Xiao-wei, LUAN Yi-xiao (159) |
| Axial compression performance of thin-walled concrete-filled square steel tube short columns confined by stirrup | CHEN Jun, NI Jia-gui, LIU Zhe, et al. (170) |
| Influence of aggregate contact characteristics on shear fatigue life of asphalt mixtures using discrete element method | PENG Yong, ZHANG Xiu-fang, GUO Ze-yu, et al. (178) |
| Structural analysis of cement pavement with cracks based on state-space method | SUN Ya-zhen, ZHENG Zhi, HUANG Wei-ming, et al. (188) |

| | |
|---|--|
| Molecular dynamics-based stability of biomass prime coat oil | SHI Shuang, LIN Lan-qin, MA Tao, et al. (197) |
| Evaluation of influence of gradation segregation on pavement moisture damage under action of dynamic and static water environment | CHEN Xu, CAO Chao-fei, SHANG Jing, et al. (210) |
| Mixing power test and viscosity model of asphalt mixture | LIU Nie-yang-zi, RONG Xin, LIU Hong-hai, et al. (220) |
| Visual relationship detection method based on construction scene | WANG Jun-jie, NONG Yuan-jun, ZHANG Li-te, et al. (226) |
| Asymmetric defect detection method of small sample image based on meta learning | HUANG Peng-qi-zi, DUAN Xiao-jun, HUANG Wen-wei, et al. (234) |
| Edge detection algorithm of noisy remote sensing image under different illumination conditions | MA Wei-xuan, ZHANG Yan, MA Chuan-xiang, et al. (241) |
| Building segmentation method of remote sensing image based on improved SegNet | ZHU Bing, LI Zi-wei, LI Qi (248) |
| Infrared and low-light image fusion based on VGG19 and low-pass filtering | LIU Zhou-zhou, SUN Chuan-xin, WANG Xiao-zhu, et al. (255) |
| SoE estimation of lithium-ion batteries based on improved BPNN-MPF algorithm | MA Yan, GUO Ze-xuan (263) |
| Driver's lane change intention recognition in snow and ice environment based on neural network | LU Hui-qiu, ZHAO Feng, XIE Bo, et al. (273) |
| Optimization design and experiment of alternate post changing seed metering device for soybean plot breeding | DUN Guo-qiang, LIU Wen-hui, MAO Ning, et al. (285) |

- ☆ 《中文核心期刊要目总览》收录期刊
- ☆ 中国科学引文数据库 (CSCD) 核心期刊
- ☆ 中国科技核心期刊
- ☆ 《科技期刊世界影响力指数 (WJCI) 报告》收录期刊 (Q1区)
- ★ 美国《工程索引》(EI Compendex) 收录期刊
- ★ 美国《化学文摘》(CA) 收录期刊
- ★ 俄罗斯《文摘杂志》(AJ) 收录期刊
- ★ 美国《剑桥科学文摘》(CSA) 收录期刊
- ☆ 中国知网收录期刊
- ☆ 中国科技论文在线收录期刊
- ☆ 《中国学术期刊文摘》等国内十多种文摘收录期刊

吉林大学学报 (工学版)

JILIN DAXUE XUEBAO (GONGXUE BAN)

JOURNAL OF JILIN UNIVERSITY
(Engineering and Technology Edition)

月刊 1957年创刊

Monthly, Started in 1957

第53卷 第1期 (总第231期) 2023年1月

Vol. 53 No.1 (Sum 231) Jan. 2023

主管单位: 中华人民共和国教育部

Responsible Institution Ministry of Education, the
People's Republic of China

主办单位: 吉林大学

Sponsored by Jilin University

主 编: 任露泉

Editor-in-Chief Ren Lu-quan

执行主编: 张祥合

Executive Editor-in-Chief Zhang Xiang-he

编辑出版: 《吉林大学学报(工学版)》编辑部
(长春市人民大街5988号 130022)

Edited and Published by Editorial Board of Journal of
Jilin University(Engineering and Technology Edition)

电话: 0431-85095297

(5988 Renmin Street, Changchun 130022, China)

电子邮箱: xbgxb@jlu.edu.cn

Tel: 86-0431-85095297

网址: <http://xuebao.jlu.edu.cn/gxb>

E-mail: xbgxb@jlu.edu.cn

Website: <http://xuebao.jlu.edu.cn/gxb>

印 刷: 吉林省保隆冠彩印刷有限公司

Printed by Jilin Baolong Guancai Printing Co.,Ltd.

发行范围: 公开发行

Issue Scope Public Issue

国内发行: 中国邮政集团有限公司吉林省报刊发行分公司

Domestic Distributor Distribution Company for Newspaper and
Journals of Jilin Province

国外发行: 中国国际图书贸易集团有限公司

Overseas Distributor China International Book Trading Corporation
(P.O.Box 399 Beijing 100048, China)

(北京399信箱, 邮编100048)

中国标准连续出版物号 ISSN 1671-5497
CN 22-1341/T

发行代号 国内 12-46
国际 BM4549

国内定价 60.00元/册
720.00元/年

